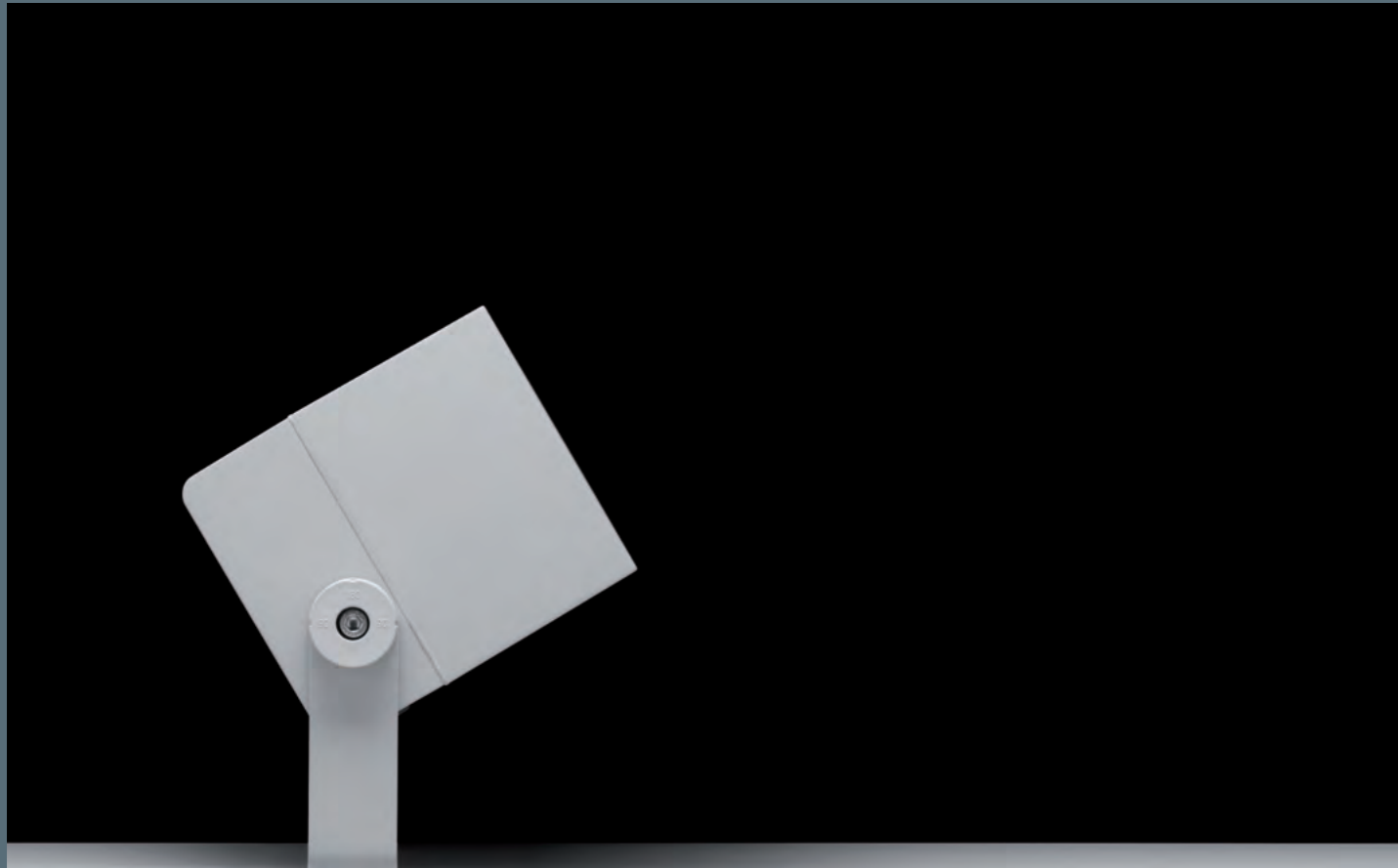




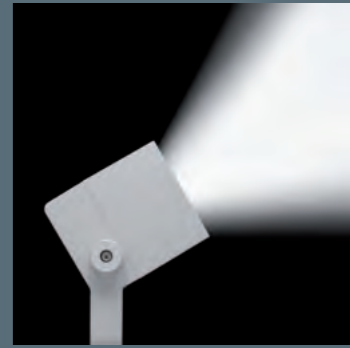
**New Products** 2016



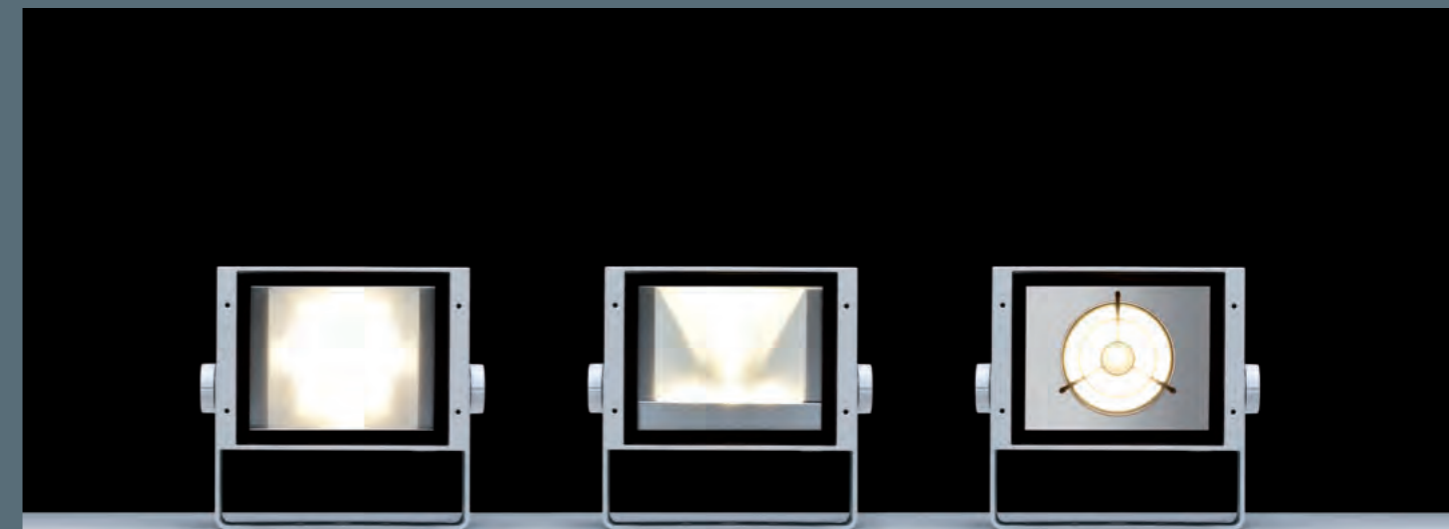
The Superlight Compact floodlight series has been a standard instrument in lighting design ever since its introduction 30 years ago. Over the years the range of floodlights has been expanded and modified for new light sources. The range has now been adapted to make use of the latest generation of very small, high performance LED modules.

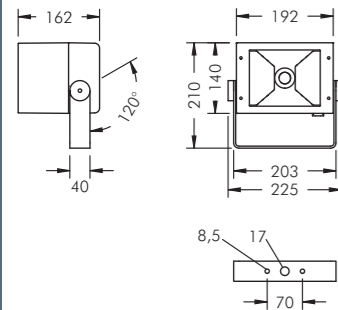
Superlight Compact LED is a compact, high performance floodlight range with all the advantages of the classic series for discharge lamps – various different light distributions and a large selection of accessories.

Compact dimensions, a high degree of versatility and timeless design make Superlight Compact LED, also in future, an essential tool for sophisticated exterior lighting projects.



Superlight Compact LED floodlights are available with symmetrical, asymmetrical and rotationally symmetrical reflectors to cover a wide range of lighting tasks. Wide beam flood, narrow beam spot and linear beam distributions can be created using luminaires of one design.



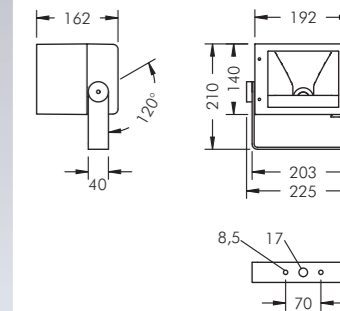
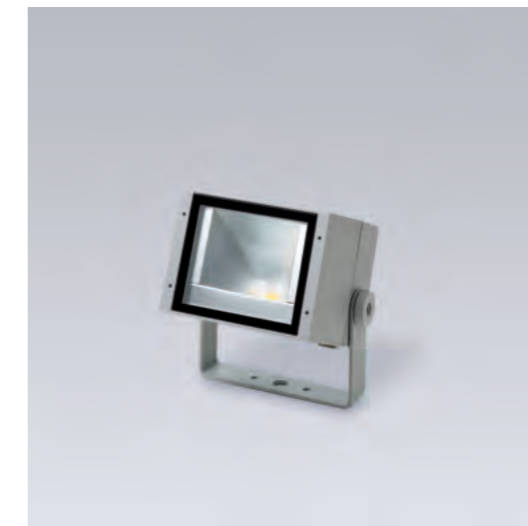


**Superlight Compact LED**  
**Axially symmetrical wide beam**

With a high performance LED module (Zhaga), integral temperature monitoring device, protection class I, IP65  $\blacklozenge\blacktriangle\blacktriangle$  windage area AW 0.04 m<sup>2</sup> die cast aluminium housing, polyester powder coated, high gloss aluminium reflector, all exterior steel parts are stainless steel, tempered safety glass, silicon gasket, closure with 4 stainless steel screws, mounting bracket powder coated aluminium with tilt scale: 2 drilled holes  $\varnothing$  8.5 mm, spacing 70 mm, 1 centre hole  $\varnothing$  17 mm, tilt range 120°, M20 cable gland, integral driver (AC/DC)

**Superlight Compact LED**  
**Asymmetrical wide beam**

With a high performance LED module (Zhaga), integral temperature monitoring device, protection class I, IP65  $\blacklozenge\blacktriangle\blacktriangle$  windage area AW 0.04 m<sup>2</sup> die cast aluminium housing, polyester powder coated, high gloss aluminium reflector, all exterior steel parts are stainless steel, tempered safety glass, silicon gasket, closure with 4 stainless steel screws, mounting bracket powder coated aluminium with tilt scale: 2 drilled holes  $\varnothing$  8.5 mm, spacing 70 mm, 1 centre hole  $\varnothing$  17 mm, tilt range 120°, M20 cable gland, integral driver (AC/DC)



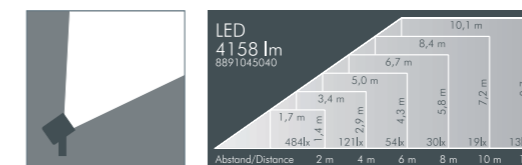
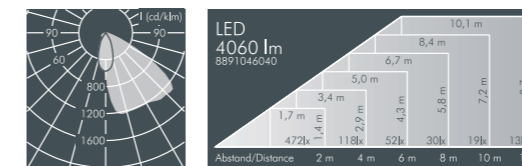
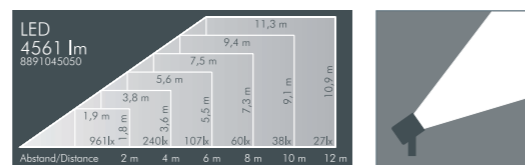
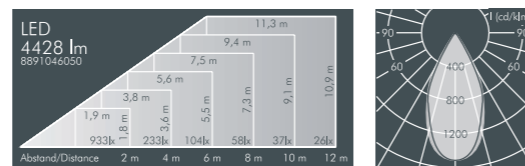
**Superlight Compact LED, axially symmetrical wide beam**

Part number	Colour	Light source	Weight	Half beam angle $\gamma$	
				C 0 – 180	C 90 – 270
<b>8 891 046 059</b>	black	1 x LED module 46 W	2.6 kg	49°	50°
<b>8 891 066 059</b>	white	warm white (3000 K)			
<b>8 891 056 059</b>	silver grey				

Part number	Colour	Light source	Weight	Half beam angle $\gamma$	
				C 0 – 180	C 90 – 270
<b>8 891 045 059</b>	black	1 x LED module 46 W	2.6 kg	49°	50°
<b>8 891 065 059</b>	white	neutral white (4000 K)			
<b>8 891 055 059</b>	silver grey				

Part number	Description
... 1..	<b>Dimmable version (DALI)</b>

Part number	Description
... 4..	<b>Luminaire with 2 cable glands</b> for through wiring
... 5..	<b>Luminaire dimmable version (DALI) with 2 cable glands</b> for through wiring



**Superlight Compact LED, asymmetrical wide beam**

Part number	Colour	Light source	Weight	Main beam angle $\gamma$
<b>8 891 046 049</b>	black	1 x LED module 46 W	2.6 kg	48°
<b>8 891 066 049</b>	white	warm white (3000 K)		
<b>8 891 056 049</b>	silver grey			

Part number	Colour	Light source	Weight	Main beam angle $\gamma$
<b>8 891 045 049</b>	black	1 x LED module 46 W	2.6 kg	48°
<b>8 891 065 049</b>	white	neutral white (4000 K)		
<b>8 891 055 049</b>	silver grey			

Part number	Description
... 1..	<b>Dimmable version (DALI)</b>

Part number	Description
... 4..	<b>Luminaire with 2 cable glands</b> for through wiring
... 5..	<b>Luminaire dimmable version (DALI) with 2 cable glands</b> for through wiring

**LED**

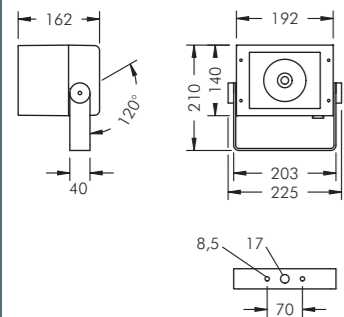
LEDs, replacement modules available



**LED**

LEDs, replacement modules available



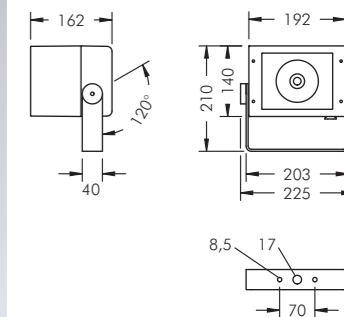


**Superlight Compact LED  
Rotationally symmetrical  
narrow beam**

With a high performance LED module, integral temperature monitoring device, protection class I, IP65  $\blacklozenge\blacktriangle\blacktriangle$  windage area A<sub>W</sub> 0.04 m<sup>2</sup> die cast aluminium housing, polyester powder coated, high gloss aluminium reflector, all exterior steel parts are stainless steel, tempered safety glass, silicon gasket, closure with 4 stainless steel screws, mounting bracket powder coated aluminium with tilt scale: 2 drilled holes  $\varnothing$  8.5 mm, spacing 70 mm, 1 centre hole  $\varnothing$  17 mm, tilt range 120°, M20 cable gland, integral driver (AC/DC)

**Superlight Compact LED  
Rotationally symmetrical  
medium wide beam**

With a high performance LED module, integral temperature monitoring device, protection class I, IP65  $\blacklozenge\blacktriangle\blacktriangle$  windage area A<sub>W</sub> 0.04 m<sup>2</sup> die cast aluminium housing, polyester powder coated, high gloss aluminium reflector, all exterior steel parts are stainless steel, tempered safety glass, silicon gasket, closure with 4 stainless steel screws, mounting bracket powder coated aluminium with tilt scale: 2 drilled holes  $\varnothing$  8.5 mm, spacing 70 mm, 1 centre hole  $\varnothing$  17 mm, tilt range 120°, M20 cable gland, integral driver (AC/DC)



**Superlight Compact LED, rotationally symmetrical narrow beam**

Part number	Colour	Light source	Weight	Half beam angle $\gamma$
<b>8 890 046 019</b>	black	1 x LED module 48 W	2.6 kg	11°
<b>8 890 066 019</b>	white	warm white (3000 K)		
<b>8 890 056 019</b>	silver grey			

Part number	Colour	Light source	Weight	Half beam angle $\gamma$
<b>8 890 045 019</b>	black	1 x LED module 48 W	2.6 kg	11°
<b>8 890 065 019</b>	white	neutral white (4000 K)		
<b>8 890 055 019</b>	silver grey			

**Superlight Compact LED, rotationally symmetrical narrow beam**

Part number	Beam direction	Description	Half beam angle $\gamma$	
..... <b>2.</b>	vertical	<b>Floodlight with ribbed glass</b>	C 0 – 180	C 90 – 270
..... <b>3.</b>	horizontal	for linear beam control	11°	54°

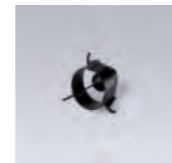
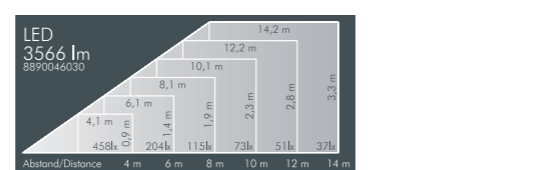
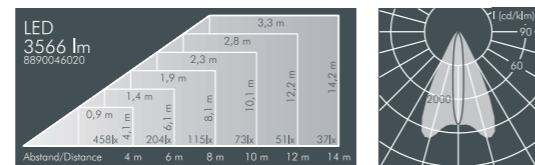
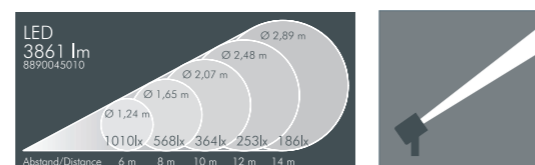
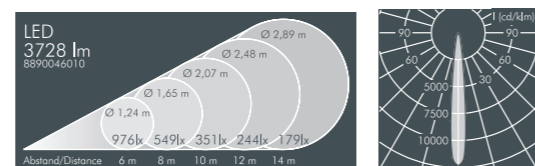


Part number	Description
..... <b>1..</b>	<b>Dimmable version (DALI)</b>

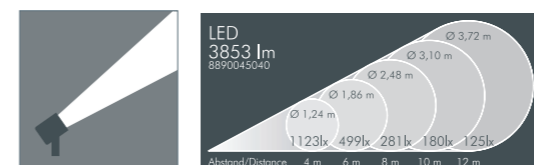
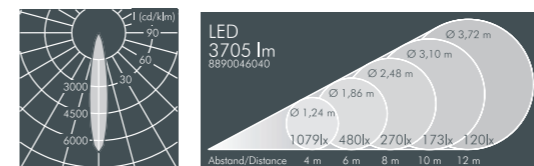
Part number	Description
..... <b>4..</b>	<b>Luminaire with 2 cable glands</b> for through wiring
..... <b>5..</b>	<b>Luminaire dimmable version (DALI) with 2 cable glands</b> for through wiring

**Accessories Superlight Compact LED, rotationally symmetrical narrow beam/medium wide beam**

Part number	Description
<b>128 0 827 940</b>	<b>Radial louvre,</b> internally fitted, to reduce glare and scattered light



**LED**  
LEDs, replacement modules available



**Superlight Compact LED, rotationally symmetrical medium wide beam**

Part number	Colour	Light source	Weight	Half beam angle $\gamma$
<b>8 890 046 049</b>	black	1 x LED module 48 W	2.6 kg	18°
<b>8 890 066 049</b>	white	warm white (3000 K)		
<b>8 890 056 049</b>	silver grey			

Part number	Colour	Light source	Weight	Half beam angle $\gamma$
<b>8 890 045 049</b>	black	1 x LED module 48 W	2.6 kg	18°
<b>8 890 065 049</b>	white	neutral white (4000 K)		
<b>8 890 055 049</b>	silver grey			

Part number	Description
..... <b>1..</b>	<b>Dimmable version (DALI)</b>

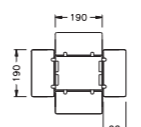
Part number	Description
..... <b>4..</b>	<b>Luminaire with 2 cable glands</b> for through wiring
..... <b>5..</b>	<b>Luminaire dimmable version (DALI) with 2 cable glands</b> for through wiring

**LED**  
LEDs, replacement modules available

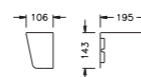


**Accessories for Superlight Compact LED**

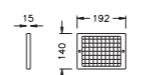
Part number	Colour	Description
<b>128 0 035 940</b>	black	<b>Barn doors*</b> , aluminium, to avoid glare from 4 directions, variable control of light distribution, for mounting on front of floodlight
<b>128 0 035 960</b>	white	
<b>128 0 035 950</b>	silver grey	



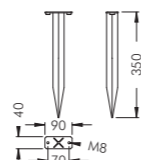
Part number	Colour	Description
<b>128 0 031 940</b>	black	<b>Cowl*</b> , stainless steel, to avoid glare from 3 directions, for mounting on front of floodlight
<b>128 0 031 960</b>	white	
<b>128 0 031 950</b>	silver grey	



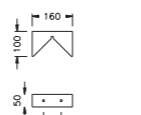
Part number	Colour	Description
<b>128 0 352 940</b>	black	<b>Protection grill*</b> , stainless steel, c/w aluminium frame, to protect the glass from stone chip and vandalism, for mounting on front of floodlight
<b>128 0 352 960</b>	white	
<b>128 0 352 950</b>	silver grey	



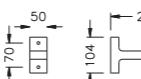
Part number	Colour	Description
<b>129 0 390 940</b>	black	<b>Earth spike</b> , stainless steel, for use in landscaped areas
<b>129 0 390 960</b>	white	
<b>129 0 390 950</b>	silver grey	



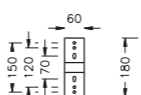
Part number	Colour	Description
<b>125 0 197 940</b>	black	<b>Corner fixing bracket A</b> , aluminium, polyester powder coated, for mounting floodlights on 90° corners
<b>125 0 197 960</b>	white	
<b>125 0 197 950</b>	silver grey	



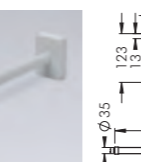
Part number	Colour	Description
<b>125 0 160 940</b>	black	<b>Wall bracket 220 mm</b> , aluminium, polyester powder coated, allows horizontal adjustment and directional aiming of luminaire
<b>125 0 160 960</b>	white	
<b>125 0 160 950</b>	silver grey	



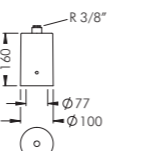
Part number	Colour	Description
<b>128 0 294 940</b>	black	<b>Wall bracket 450 mm</b> , aluminium, polyester powder coated, allows horizontal adjustment and directional aiming of luminaire
<b>128 0 294 960</b>	white	
<b>128 0 294 950</b>	silver grey	



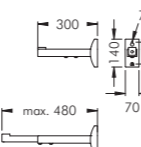
Part number	Colour	Description
<b>128 0 801 940</b>	black	<b>Wall arm 820 mm</b> , aluminium, polyester powder coated, for illumination of signs and facades, cable duct inside, max. load 6 kgs
<b>128 0 801 960</b>	white	
<b>128 0 801 950</b>	silver grey	



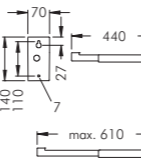
Part number	Colour	Description
<b>128 0 625 940</b>	black	<b>Pole top fitter</b> , aluminium, for pole Ø 76 mm, with R3/8" thread, for mounting one floodlight
<b>128 0 625 960</b>	white	
<b>128 0 625 950</b>	silver grey	



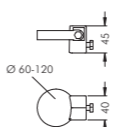
Part number	Colour	Description
<b>128 0 700 940</b>	black	<b>Telescopic wall arm, 300 - 480 mm</b>
<b>128 0 700 960</b>	white	
<b>128 0 700 950</b>	silver grey	



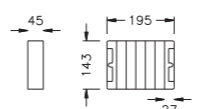
Part number	Colour	Description
<b>128 0 730 940</b>	black	<b>Telescopic wall arm, 440 - 610 mm</b>
<b>128 0 730 960</b>	white	
<b>128 0 730 950</b>	silver grey	

**Accessories Superlight Compact LED**

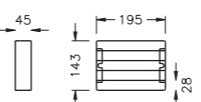
Part number	Colour	Description
<b>128 0 760 940</b>	black	<b>Pole clamp</b> , aluminium, polyester powder coated, stainless steel strap, for mounting on poles Ø 60 - 120 mm
<b>128 0 760 960</b>	white	
<b>128 0 760 950</b>	silver grey	



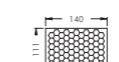
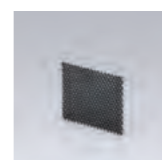
Part number	Colour	Description
<b>128 0 033 940</b>	black	<b>Vertical louvre*</b> , stainless steel, to reduce lateral glare, for mounting on front of floodlight
<b>128 0 033 960</b>	white	
<b>128 0 033 950</b>	silver grey	



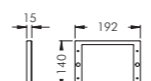
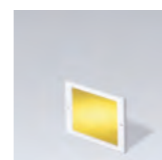
Part number	Colour	Description
<b>128 0 368 940</b>	black	<b>Horizontal louvre*</b> , stainless steel, to reduce lateral glare, for mounting on front of floodlight
<b>128 0 368 960</b>	white	
<b>128 0 368 950</b>	silver grey	



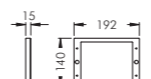
Part number	Description
<b>128 0 813 000</b>	<b>Honeycomb louvre</b> , internally fitted, to avoid glare



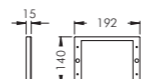
Part number	Colour	Description
<b>128 0 403 940</b>	black frame	<b>Yellow colour filter*</b> , c/w aluminium frame
<b>128 0 403 960</b>	white frame	
<b>128 0 403 950</b>	silver grey frame	



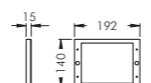
Part number	Colour	Description
<b>128 0 393 940</b>	black frame	<b>Red colour filter*</b> , c/w aluminium frame
<b>128 0 393 960</b>	white frame	
<b>128 0 393 950</b>	silver grey frame	



Part number	Colour	Description
<b>128 0 383 940</b>	black frame	<b>Blue colour filter*</b> , c/w aluminium frame
<b>128 0 383 960</b>	white frame	
<b>128 0 383 950</b>	silver grey frame	



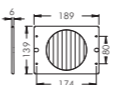
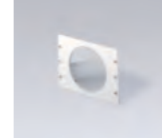
Part number	Colour	Description
<b>128 0 418 940</b>	black frame	<b>Green colour filter*</b> , c/w aluminium frame
<b>128 0 418 960</b>	white frame	
<b>128 0 418 950</b>	silver grey frame	



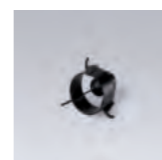
\* For retro-fitting. Only one accessory per luminaire, not in combination, also suitable for floodlights with linear beam spread.

**Accessories Superlight Compact LED, rotationally symmetrical narrow beam**

Part number	Colour	Description
<b>128 0 622 940</b>	black	<b>Rotatable ribbed glass spreader lens</b> , for linear beam distribution, continuously adjustable through 360°, with stainless steel frame
<b>128 0 622 960</b>	white	
<b>128 0 622 950</b>	silver grey	

**Accessories Superlight Compact LED, rotationally symmetrical narrow beam and medium wide beam**

Part number	Description
<b>128 0 827 940</b>	<b>Radial louvre</b> , internally fitted, to reduce glare and scattered light





Superlight LED is a new range of exterior, high performance floodlights in 3 sizes of housing. Particularly high performance LED modules are combined with extremely efficient reflectors for various different light distributions. These floodlights can be used universally for manifold exterior lighting tasks.

Symmetrical or asymmetrical wide beam reflectors can be used for area lighting while the rotationally symmetrical narrow beam reflectors are useful for accent lighting on façades or on the ground. Optimal heat management ensures a high degree of efficiency and longevity of the LED modules. Their sleek and unobtrusive design allows these luminaires to be integrated into any style of architecture.

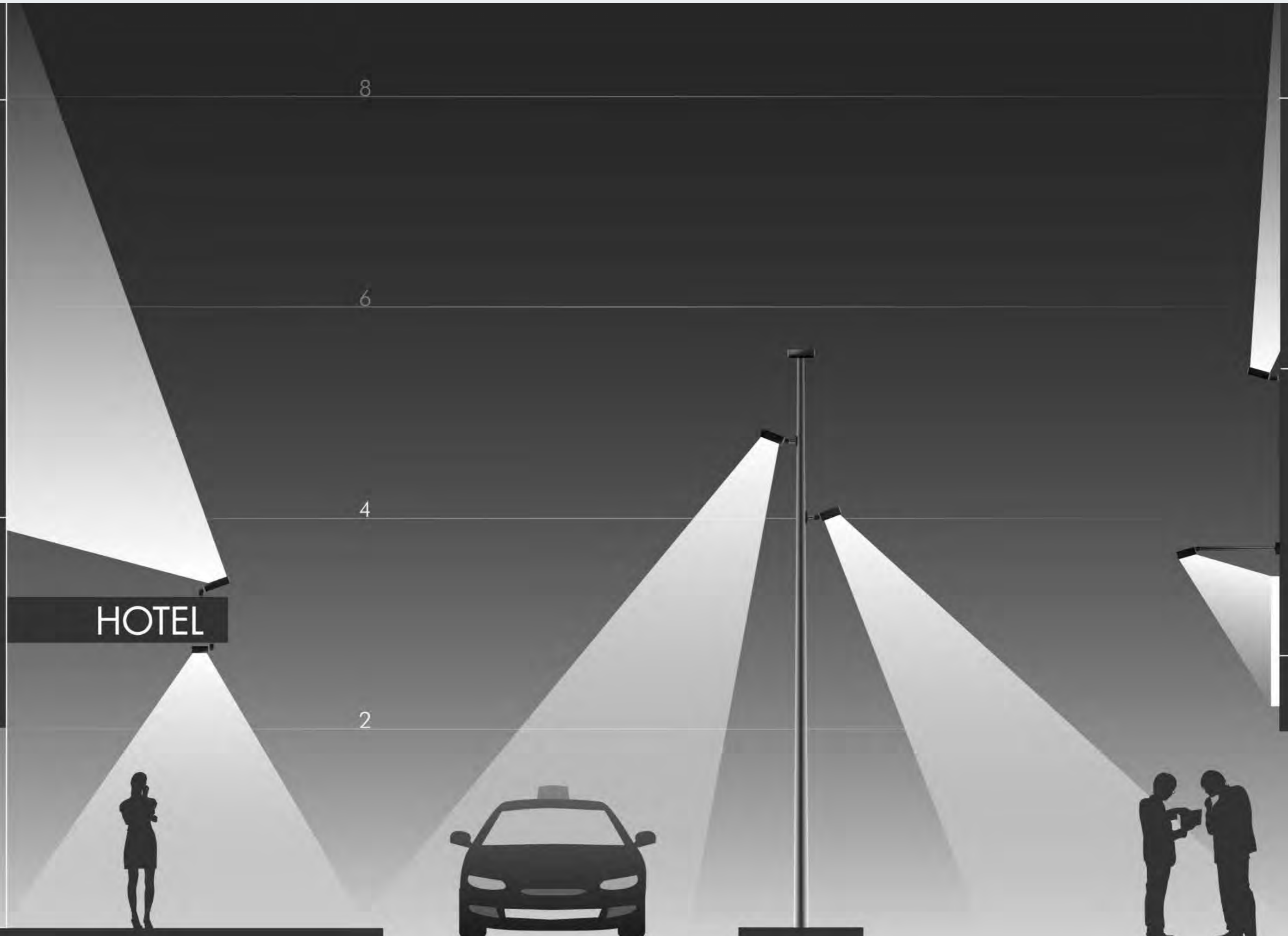
As pole mount luminaires the floodlights are supplied with a fixing bracket which allows the luminaires to be tilted and turned. A wide range of different light distributions and flexibility of positioning of the luminaires on the pole give the discerning lighting consultant many options for the illumination of exterior spaces. The Superlight LED 3 with Comfort Optic is a particularly glare-free luminaire for such tasks.

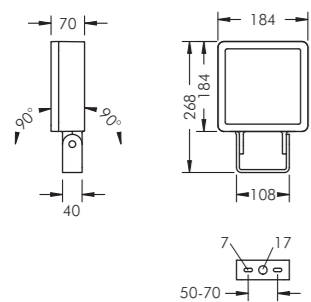


DEPOT noise protection wall, Niedernberg  
Lighting Design: studiocandela, Herford



All sizes of housing are available with wide beam, asymmetrical or rotationally symmetrical narrow beam reflectors.



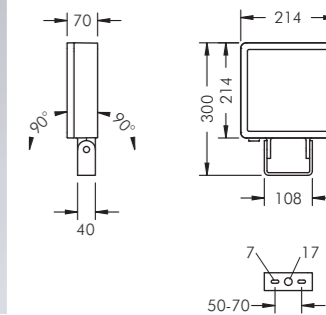


### Superlight LED 1

With 1 high performance LED module (Zhaga), integral temperature monitoring device, protection class I, IP65  $\blacklozenge\blacktriangle\blacktriangle$  windage area AW 0.035 m<sup>2</sup> die cast aluminium housing, polyester powder coated, high efficiency reflector, all exterior steel parts are stainless steel, tempered safety glass, silicon gasket, closure with 4 stainless steel screws, mounting bracket powder coated aluminium: 2 drilled holes  $\varnothing$  7 mm, spacing 50-70 mm, 1 centre hole  $\varnothing$  17 mm, tilt range 180°, M20 cable gland, integral driver (AC/DC)

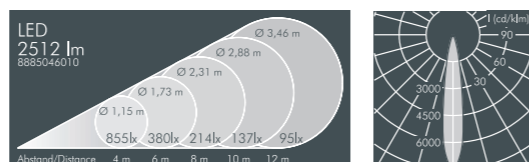
### Superlight LED 2

With 1 high performance LED module (Zhaga), integral temperature monitoring device, protection class I, IP65  $\blacklozenge\blacktriangle\blacktriangle$  windage area AW 0.047 m<sup>2</sup> die cast aluminium housing, polyester powder coated, high efficiency reflector, all exterior steel parts are stainless steel, tempered safety glass, silicon gasket, closure with 4 stainless steel screws, mounting bracket powder coated aluminium: 2 drilled holes  $\varnothing$  7 mm, spacing 50-70 mm, 1 centre hole  $\varnothing$  17 mm, tilt range 180°, M20 cable gland, integral driver (AC/DC)

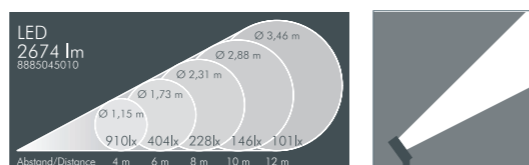


#### Superlight LED 1, rotationally symmetrical narrow beam\*

Part number	Colour	Light source	Weight	Half beam angle $\gamma$
<b>8 885 046 019</b>	black	1 x LED module 27 W	2.4 kg	16°
<b>8 885 066 019</b>	white	warm white (3000 K)		
<b>8 885 056 019</b>	silver grey			



Part number	Colour	Light source	Weight	Half beam angle $\gamma$
<b>8 885 045 019</b>	black	1 x LED module 27 W	2.4 kg	16°
<b>8 885 065 019</b>	white	neutral white (4000 K)		
<b>8 885 055 019</b>	silver grey			

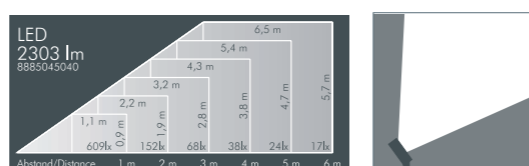


#### Superlight LED 1, asymmetrical beam\*

Part number	Colour	Light source	Weight	Main beam angle $\gamma$
<b>8 885 046 049</b>	black	1 x LED module 27 W	2.4 kg	45°
<b>8 885 066 049</b>	white	warm white (3000 K)		
<b>8 885 056 049</b>	silver grey			

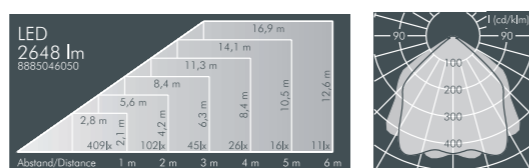


Part number	Colour	Light source	Weight	Main beam angle $\gamma$
<b>8 885 045 049</b>	black	1 x LED module 27 W	2.4 kg	45°
<b>8 885 065 049</b>	white	neutral white (4000 K)		
<b>8 885 055 049</b>	silver grey			

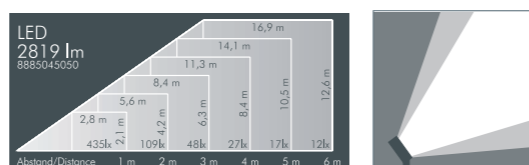


#### Superlight LED 1, wide beam\*

Part number	Colour	Light source	Weight	Half beam angle $\gamma$
<b>8 885 046 059</b>	black	1 x LED module 27 W	2.4 kg	C 0 - 180 C 90 - 270
<b>8 885 066 059</b>	white	warm white (3000 K)		
<b>8 885 056 059</b>	silver grey			



Part number	Colour	Light source	Weight	Half beam angle $\gamma$
<b>8 885 045 059</b>	black	1 x LED module 27 W	2.4 kg	C 0 - 180 C 90 - 270
<b>8 885 065 059</b>	white	neutral white (4000 K)		
<b>8 885 055 059</b>	silver grey			



\*Luminaires with 2 cable glands are available upon request.

Part number*	Description
... 1 ...	<b>Luminaire with wall arm</b> , internal cable run

\*Available upon request in various lengths.

Part number	Description
... 1 ..	<b>Dimmable version (DALI)</b>

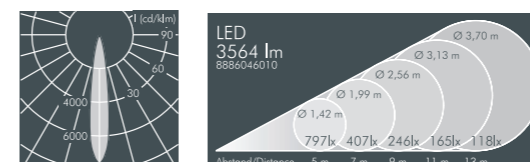


LED  
LEDs, replacement modules available

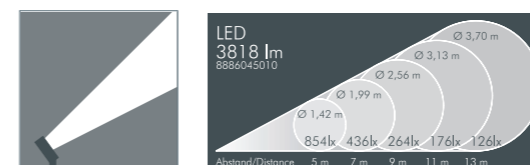


#### Superlight LED 2, rotationally symmetrical narrow beam\*

Part number	Colour	Light source	Weight	Half beam angle $\gamma$
<b>8 886 046 019</b>	black	1 x LED module 40 W	3.0 kg	16°
<b>8 886 066 019</b>	white	warm white (3000 K)		
<b>8 886 056 019</b>	silver grey			

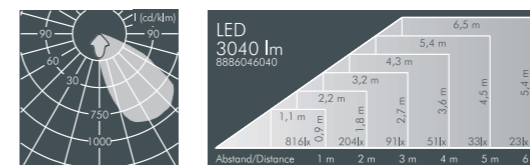


Part number	Colour	Light source	Weight	Half beam angle $\gamma$
<b>8 886 045 019</b>	black	1 x LED module 40 W	3.0 kg	16°
<b>8 886 065 019</b>	white	neutral white (4000 K)		
<b>8 886 055 019</b>	silver grey			

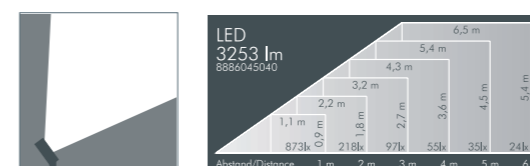


#### Superlight LED 2, asymmetrical beam\*

Part number	Colour	Light source	Weight	Main beam angle $\gamma$
<b>8 886 046 049</b>	black	1 x LED module 40 W	3.0 kg	45°
<b>8 886 066 049</b>	white	warm white (3000 K)		
<b>8 886 056 049</b>	silver grey			

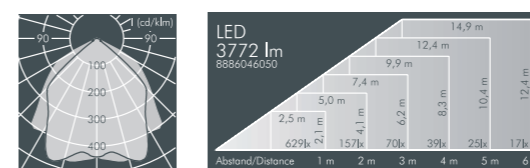


Part number	Colour	Light source	Weight	Main beam angle $\gamma$
<b>8 886 045 049</b>	black	1 x LED module 40 W	3.0 kg	45°
<b>8 886 065 049</b>	white	neutral white (4000 K)		
<b>8 886 055 049</b>	silver grey			

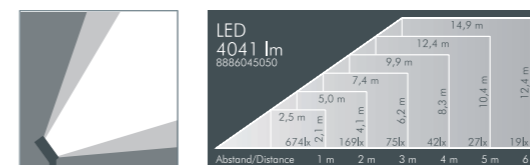


#### Superlight LED 2, wide beam\*

Part number	Colour	Light source	Weight	Half beam angle $\gamma$
<b>8 886 046 059</b>	black	1 x LED module 40 W	3.0 kg	C 0 - 180 C 90 - 270
<b>8 886 066 059</b>	white	warm white (3000 K)		
<b>8 886 056 059</b>	silver grey			



Part number	Colour	Light source	Weight	Half beam angle $\gamma$
<b>8 886 045 059</b>	black	1 x LED module 40 W	3.0 kg	C 0 - 180 C 90 - 270
<b>8 886 065 059</b>	white	neutral white (4000 K)		
<b>8 886 055 059</b>	silver grey			



\*Luminaires with 2 cable glands are available upon request.

Part number*	Description
... 1 ...	<b>Luminaire with wall arm</b> , internal cable run

\*Available upon request in various lengths.

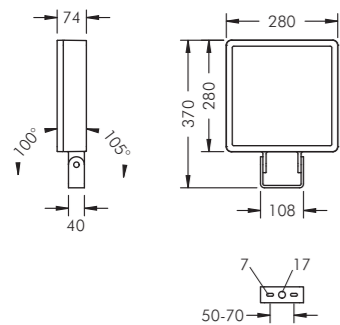
Part number	Description
... 1 ..	<b>Dimmable version (DALI)</b>



LED  
LEDs, replacement modules available





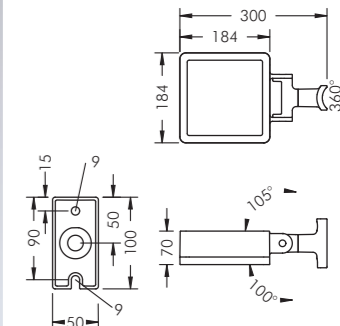


### Superlight LED 3

With 2 high performance LED modules (Zhaga), integral temperature monitoring device, protection class I, IP65  $\blacklozenge\blacktriangle\blacktriangle$  windage area AW 0.08 m<sup>2</sup> die cast aluminium housing, polyester powder coated, high efficiency reflector, all exterior steel parts are stainless steel, tempered safety glass, silicon gasket, closure with 4 stainless steel screws, mounting bracket powder coated aluminium: 2 drilled holes  $\varnothing$  7 mm, spacing 50-70 mm, 1 centre hole  $\varnothing$  17 mm, tilt range 205°, M20 cable gland, integral driver (AC/DC)

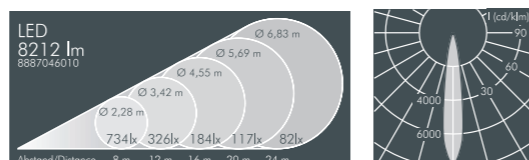
### Superlight LED 1, pole luminaire

With 1 high performance LED module (Zhaga), integral temperature monitoring device, protection class I, IP65  $\blacklozenge\blacktriangle\blacktriangle$  windage area AW 0.035 m<sup>2</sup> die cast aluminium housing, polyester powder coated, high efficiency reflector, all exterior steel parts are stainless steel, tempered safety glass, silicon gasket, closure with 4 stainless steel screws, for installation on poles  $\varnothing$  60 - 100 mm, powder coated aluminium mounting base: 2 drilled holes  $\varnothing$  9 mm, spacing 75 mm, 1 centre hole  $\varnothing$  17 mm, tilt range 205°, swivel range 360°, M20 cable gland, integral driver (AC/DC)

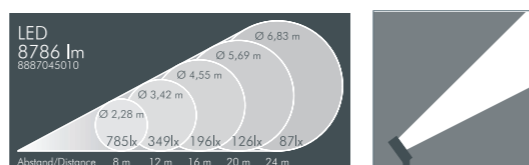


#### Superlight LED 3, rotationally symmetrical narrow beam\*

Part number	Colour	Light source	Weight	Half beam angle $\gamma$
<b>8 887 046 019</b>	black	2 x LED module 45 W	5.4 kg	16°
<b>8 887 066 019</b>	white	warm white (3000 K)		
<b>8 887 056 019</b>	silver grey			

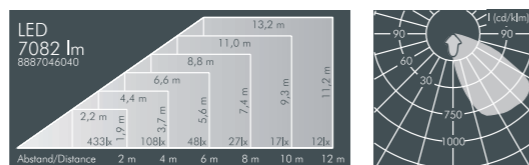


Part number	Colour	Light source	Weight	Half beam angle $\gamma$
<b>8 887 045 019</b>	black	2 x LED module 45 W	5.4 kg	16°
<b>8 887 065 019</b>	white	neutral white (4000 K)		
<b>8 887 055 019</b>	silver grey			

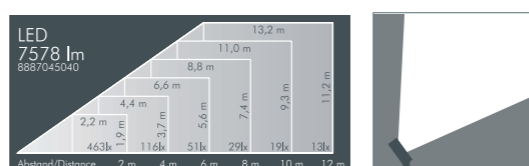


#### Superlight LED 3, asymmetrical beam\*

Part number	Colour	Light source	Weight	Main beam angle $\gamma$
<b>8 887 046 049</b>	black	2 x LED module 45 W	5.4 kg	45°
<b>8 887 066 049</b>	white	warm white (3000 K)		
<b>8 887 056 049</b>	silver grey			

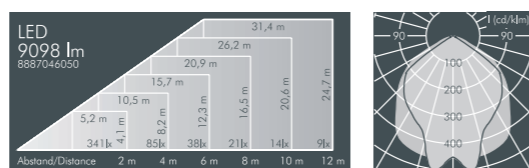


Part number	Colour	Light source	Weight	Main beam angle $\gamma$
<b>8 887 045 049</b>	black	2 x LED module 45 W	5.4 kg	45°
<b>8 887 065 049</b>	white	neutral white (4000 K)		
<b>8 887 055 049</b>	silver grey			

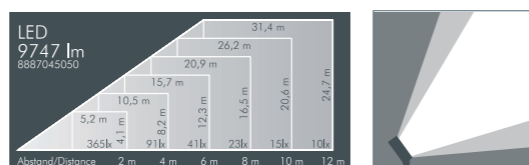


#### Superlight LED 3, wide beam\*

Part number	Colour	Light source	Weight	Half beam angle $\gamma$
<b>8 887 046 059</b>	black	2 x LED module 45 W	5.4 kg	C 0 - 180 C 90 - 270
<b>8 887 066 059</b>	white	warm white (3000 K)		
<b>8 887 056 059</b>	silver grey			



Part number	Colour	Light source	Weight	Half beam angle $\gamma$
<b>8 887 045 059</b>	black	2 x LED module 45 W	5.4 kg	C 0 - 180 C 90 - 270
<b>8 887 065 059</b>	white	neutral white (4000 K)		
<b>8 887 055 059</b>	silver grey			



\*Luminaires with 2 cable glands are available upon request.

Part number*	Description
... 1 ...	<b>Luminaire with wall arm</b> , internal cable run

\*Available upon request in various lengths.

Part number	Description
... 1 ..	<b>Dimmable version (DALI)</b>

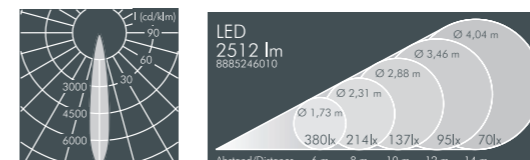


LED  
LEDs, replacement modules available

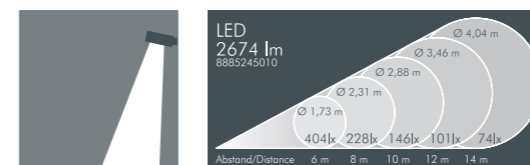


#### Superlight LED 1, pole luminaire, rotationally symmetrical narrow beam

Part number	Colour	Light source	Weight	Half beam angle $\gamma$
<b>8 885 246 019</b>	black	1 x LED module 27 W	2.6 kg	16°
<b>8 885 266 019</b>	white	warm white (3000 K)		
<b>8 885 256 019</b>	silver grey			

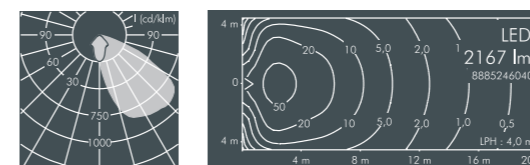


Part number	Colour	Light source	Weight	Half beam angle $\gamma$
<b>8 885 245 019</b>	black	1 x LED module 27 W	2.6 kg	16°
<b>8 885 265 019</b>	white	neutral white (4000 K)		
<b>8 885 255 019</b>	silver grey			

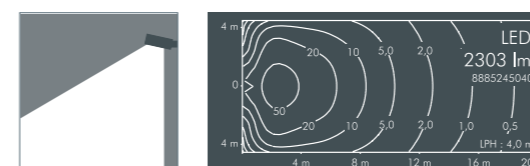


#### Superlight LED 1, pole luminaire, asymmetrical beam

Part number	Colour	Light source	Weight	Main beam angle $\gamma$
<b>8 885 246 049</b>	black	1 x LED module 27 W	2.6 kg	45°
<b>8 885 266 049</b>	white	warm white (3000 K)		
<b>8 885 256 049</b>	silver grey			

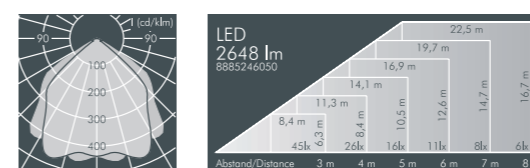


Part number	Colour	Light source	Weight	Main beam angle $\gamma$
<b>8 885 245 049</b>	black	1 x LED module 27 W	2.6 kg	45°
<b>8 885 265 049</b>	white	neutral white (4000 K)		
<b>8 885 255 049</b>	silver grey			

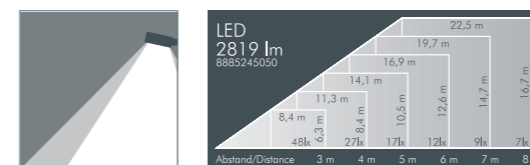


#### Superlight LED 1, pole luminaire, wide beam

Part number	Colour	Light source	Weight	Half beam angle $\gamma$
<b>8 885 246 059</b>	black	1 x LED module 27 W	2.6 kg	C 0 - 180 C 90 - 270
<b>8 885 266 059</b>	white	warm white (3000 K)		
<b>8 885 256 059</b>	silver grey			



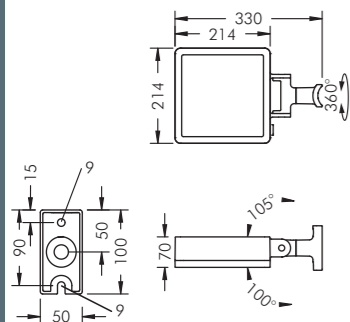
Part number	Colour	Light source	Weight	Half beam angle $\gamma$
<b>8 885 245 059</b>	black	1 x LED module 27 W	2.6 kg	C 0 - 180 C 90 - 270
<b>8 885 265 059</b>	white	neutral white (4000 K)		
<b>8 885 255 059</b>	silver grey			



Part number	Description
... 1 ..	<b>Dimmable version (DALI)</b>

LED  
LEDs, replacement modules available



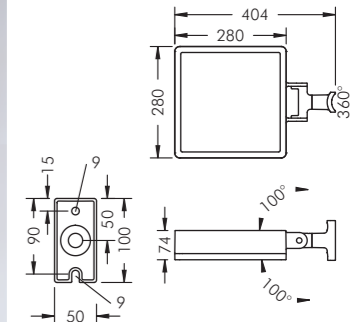


### Superlight LED 2, pole luminaire

With 1 high performance LED module (Zhaga), integral temperature monitoring device, protection class I, IP65  $\blacklozenge\blacktriangle\blacktriangle$  windage area AW 0.047 m<sup>2</sup> die cast aluminium housing, polyester powder coated, high efficiency reflector, all exterior steel parts are stainless steel, tempered safety glass, silicon gasket, closure with 4 stainless steel screws, for installation on poles  $\varnothing$  60 - 100 mm, powder coated aluminium mounting base: 2 drilled holes  $\varnothing$  9 mm, spacing 75 mm, 1 centre hole  $\varnothing$  17 mm, tilt range 205°, swivel range 360°, M20 cable gland, integral driver (AC/DC)

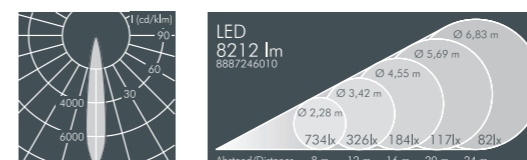
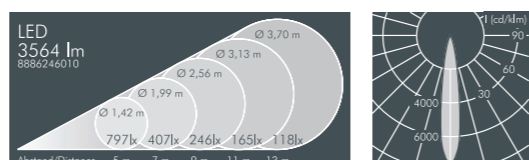
### Superlight LED 3, pole luminaire

With 2 high performance LED modules (Zhaga), integral temperature monitoring device, protection class I, IP65  $\blacklozenge\blacktriangle\blacktriangle$  windage area AW 0.08 m<sup>2</sup> die cast aluminium housing, polyester powder coated, high efficiency reflector, all exterior steel parts are stainless steel, tempered safety glass, silicon gasket, closure with 4 stainless steel screws, for installation on poles  $\varnothing$  60 - 100 mm, powder coated aluminium mounting base: 2 drilled holes  $\varnothing$  9 mm, spacing 75 mm, 1 centre hole  $\varnothing$  17 mm, tilt range 200°, swivel range 360°, M20 cable gland, integral driver (AC/DC)



#### Superlight LED 2, pole luminaire, rotationally symmetrical narrow beam

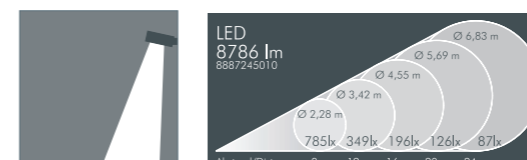
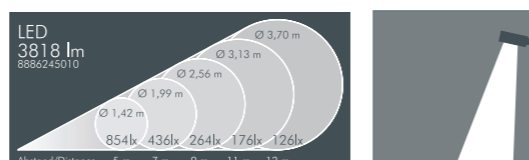
Part number	Colour	Light source	Weight	Half beam angle $\gamma$
<b>8 886 246 019</b>	black	1 x LED module 40 W	3.2 kg	16°
<b>8 886 266 019</b>	white	warm white (3000 K)		
<b>8 886 256 019</b>	silver grey			



#### Superlight LED 3, pole luminaire, rotationally symmetrical narrow beam

Part number	Colour	Light source	Weight	Half beam angle $\gamma$
<b>8 887 246 019</b>	black	2 x LED module 45 W	5.6 kg	16°
<b>8 887 266 019</b>	white	warm white (3000 K)		
<b>8 887 256 019</b>	silver grey			

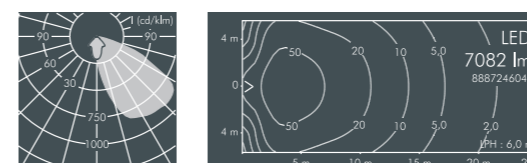
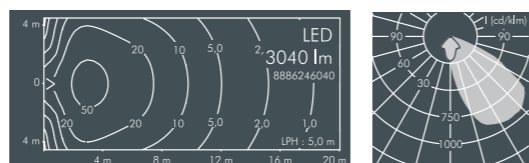
Part number	Colour	Light source	Weight	Half beam angle $\gamma$
<b>8 886 245 019</b>	black	1 x LED module 40 W	3.2 kg	16°
<b>8 886 265 019</b>	white	neutral white (4000 K)		
<b>8 886 255 019</b>	silver grey			



Part number	Colour	Light source	Weight	Half beam angle $\gamma$
<b>8 887 245 019</b>	black	2 x LED module 45 W	5.6 kg	16°
<b>8 887 265 019</b>	white	neutral white (4000 K)		
<b>8 887 255 019</b>	silver grey			

#### Superlight LED 2, pole luminaire, asymmetrical beam

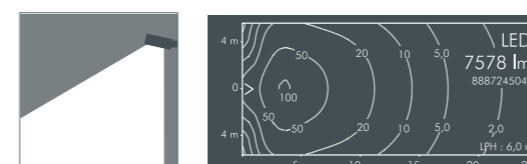
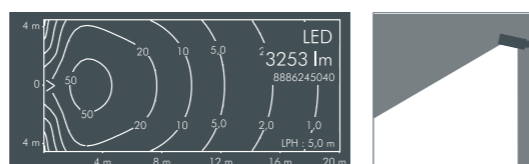
Part number	Colour	Light source	Weight	Main beam angle $\gamma$
<b>8 886 246 049</b>	black	1 x LED module 40 W	3.2 kg	45°
<b>8 886 266 049</b>	white	warm white (3000 K)		
<b>8 886 256 049</b>	silver grey			



#### Superlight LED 3, pole luminaire, asymmetrical beam

Part number	Colour	Light source	Weight	Main beam angle $\gamma$
<b>8 887 246 049</b>	black	2 x LED module 45 W	5.6 kg	45°
<b>8 887 266 049</b>	white	warm white (3000 K)		
<b>8 887 256 049</b>	silver grey			

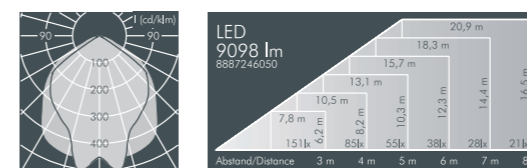
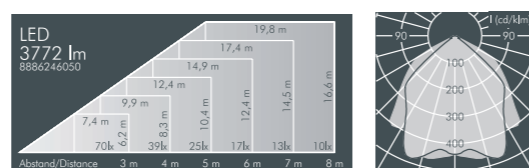
Part number	Colour	Light source	Weight	Main beam angle $\gamma$
<b>8 886 245 049</b>	black	1 x LED module 40 W	3.2 kg	45°
<b>8 886 265 049</b>	white	neutral white (4000 K)		
<b>8 886 255 049</b>	silver grey			



Part number	Colour	Light source	Weight	Main beam angle $\gamma$
<b>8 887 245 049</b>	black	2 x LED module 45 W	5.6 kg	45°
<b>8 887 265 049</b>	white	neutral white (4000 K)		
<b>8 887 255 049</b>	silver grey			

#### Superlight LED 2, pole luminaire, wide beam

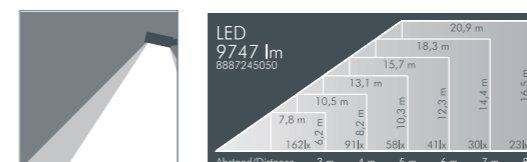
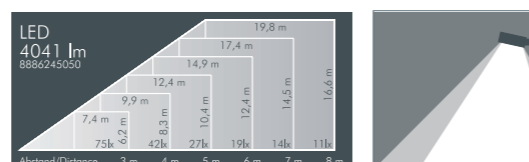
Part number	Colour	Light source	Weight	Half beam angle $\gamma$
<b>8 886 246 059</b>	black	1 x LED module 40 W	3.2 kg	C 0 - 180 C 90 - 270
<b>8 886 266 059</b>	white	warm white (3000 K)		
<b>8 886 256 059</b>	silver grey			



#### Superlight LED 3, pole luminaire, wide beam

Part number	Colour	Light source	Weight	Half beam angle $\gamma$
<b>8 887 246 059</b>	black	2 x LED module 45 W	5.6 kg	C 0 - 180 C 90 - 270
<b>8 887 266 059</b>	white	warm white (3000 K)		
<b>8 887 256 059</b>	silver grey			

Part number	Colour	Light source	Weight	Half beam angle $\gamma$
<b>8 886 245 059</b>	black	1 x LED module 40 W	3.2 kg	C 0 - 180 C 90 - 270
<b>8 886 265 059</b>	white	neutral white (4000 K)		
<b>8 886 255 059</b>	silver grey			

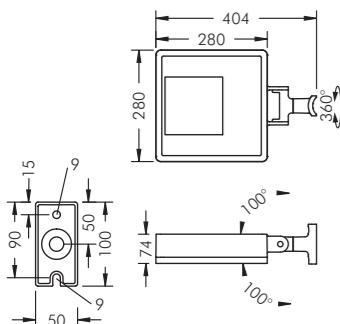


Part number	Colour	Light source	Weight	Half beam angle $\gamma$
<b>8 887 245 059</b>	black	2 x LED module 45 W	5.6 kg	C 0 - 180 C 90 - 270
<b>8 887 265 059</b>	white	neutral white (4000 K)		
<b>8 887 255 059</b>	silver grey			

Part number	Description
... .. 1..	<b>Dimmable version (DALI)</b>

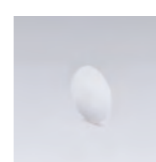
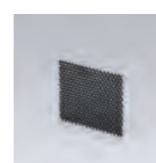
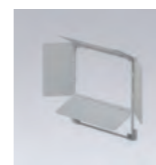
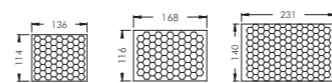
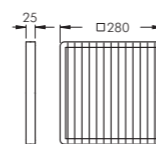
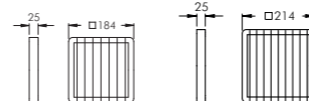
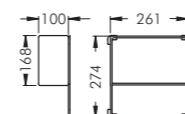
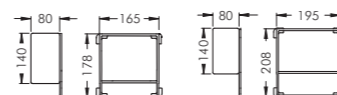
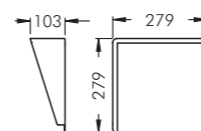
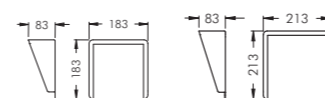
Part number	Description
... .. 1..	<b>Dimmable version (DALI)</b>





### Superlight LED 3, pole luminaire

With LED Prism module or high performance LED module, integral temperature monitoring device, protection class I, IP65 windage area AW 0.08 m<sup>2</sup> die cast aluminium housing, polyester powder coated, all exterior steel parts are stainless steel, tempered safety glass, silicon gasket, closure with 4 stainless steel screws, for installation on poles Ø 60 - 100 mm, powder coated aluminium mounting base: 2 drilled holes Ø 9 mm, spacing 75 mm, 1 centre hole Ø 17 mm, tilt range 200°, swivel range 360°, M20 cable gland, integral driver



Accessories Superlight LED 1, LED 2			
Part number LED 1	Part number LED 2	Colour	Description
128 0 792 940	128 0 793 940	black	<b>Cowl</b> , aluminium, to avoid glare from 3 directions, for mounting on front of floodlight
128 0 792 960	128 0 793 960	white	
128 0 792 950	128 0 793 950	silver grey	

Accessories Superlight LED 3		
Part number LED 3	Colour	Description
128 0 794 940	black	<b>Cowl</b> , aluminium, to avoid glare from 3 directions, for mounting on front of floodlight
128 0 794 960	white	
128 0 794 950	silver grey	

Accessories Superlight LED 1, LED 2			
Part number LED 1	Part number LED 2	Colour	Description
128 0 797 940	128 0 798 940	black	<b>Barn doors</b> , aluminium, to avoid glare from 4 directions, variable control of light distribution
128 0 797 960	128 0 798 960	white	
128 0 797 950	128 0 798 950	silver grey	

Accessories Superlight LED 3		
Part number LED 3	Colour	Description
128 0 799 940	black	<b>Barn doors</b> , aluminium, to avoid glare from 4 directions, variable control of light distribution
128 0 799 960	white	
128 0 799 950	silver grey	

Accessories Superlight LED 1, LED 2			
Part number LED 1	Part number LED 2	Colour	Description
128 0 802 940	128 0 803 940	black	<b>Vertical/Horizontal louvre</b> , stainless steel, to reduce lateral glare, for mounting on front of floodlight
128 0 802 960	128 0 803 960	white	
128 0 802 950	128 0 803 950	silver grey	

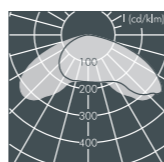
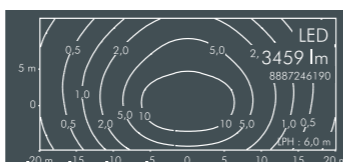
Accessories Superlight LED 3		
Part number LED 3	Colour	Description
128 0 804 940	black	<b>Vertical/Horizontal louvre</b> , stainless steel, to reduce lateral glare, for mounting on front of floodlight
128 0 804 960	white	
128 0 804 950	silver grey	

Accessories Superlight LED 1, LED 2, LED 3		
Part number	Luminaire	Description
128 0 810 000	LED 1	<b>Honeycomb louvre</b> , internally fitted, to avoid glare
128 0 811 000	LED 2	
128 0 812 000	LED 3	

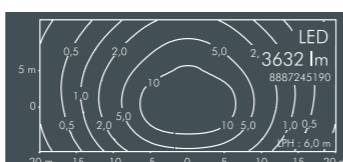
Accessories Superlight LED 1, LED 2, LED 3 rotationally symmetrical narrow beam				
Part number	Luminaire	Description	Half beam angle γ	
128 0 807 000	LED 1	<b>Ribbed glass</b> , internally fitted, for linear beam control, continuously adjustable 360°	C 0 - 180	C 90 - 270
128 0 808 000	LED 2		20°	29°
128 0 809 000	LED 3		20°	29°

Colour filters, to be installed inside luminaires, are available upon request.

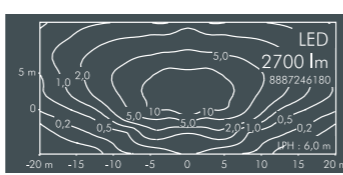
Superlight LED 3, pole luminaire, Comfort Optic				
Part number	Colour	Light source	Weight	Half beam angle γ
8 887 246 199	black	1 x LED Prism module 55 W	6.6 kg	C 0 - 180
8 887 266 199	white	warm white (3000 K)		C 90 - 270
8 887 256 199	silver grey			



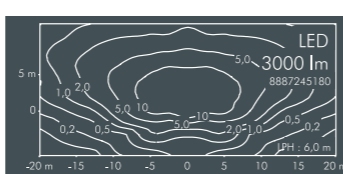
Part number	Colour	Light source	Weight	Half beam angle γ
8 887 245 199	black	1 x LED Prism module 55 W	6.6 kg	C 0 - 180
8 887 265 199	white	neutral white (4000 K)		C 90 - 270
8 887 255 199	silver grey			



Superlight LED 3, pole luminaire, Street Optic (according to DIN EN 13201-2)				
Part number	Colour	Light source	Weight	Half beam angle γ
8 887 246 189	black	1 x LED module (Osram) 32 W	6.6 kg	C 0 - 180
8 887 266 189	white	warm white (3000 K)		C 90 - 270
8 887 256 189	silver grey			

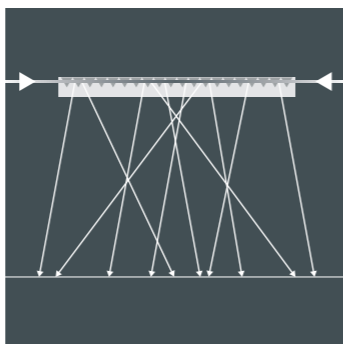


Part number	Colour	Light source	Weight	Half beam angle γ
8 887 245 189	black	1 x LED module (Osram) 32 W	6.6 kg	C 0 - 180
8 887 265 189	white	neutral white (4000 K)		C 90 - 270
8 887 255 189	silver grey			

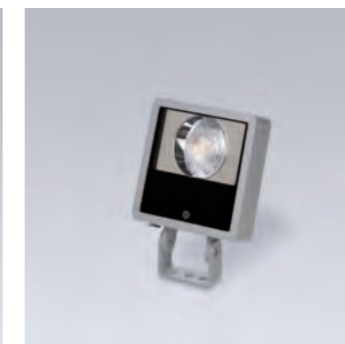


Illumination examples (SIP)3 according to DIN EN 13201-2		
	Superlight LED 3, pole luminaire	
	Comfort Optic	Street Optic
<b>H</b>	6 m	6 m
<b>D</b>	24 m	30 m
<b>D/H</b>	4	5
<b>Em</b>	7.5 lx	7.5 lx
<b>Emin/Em</b>	0.36	0.32
<b>TI*</b>	7%	12%

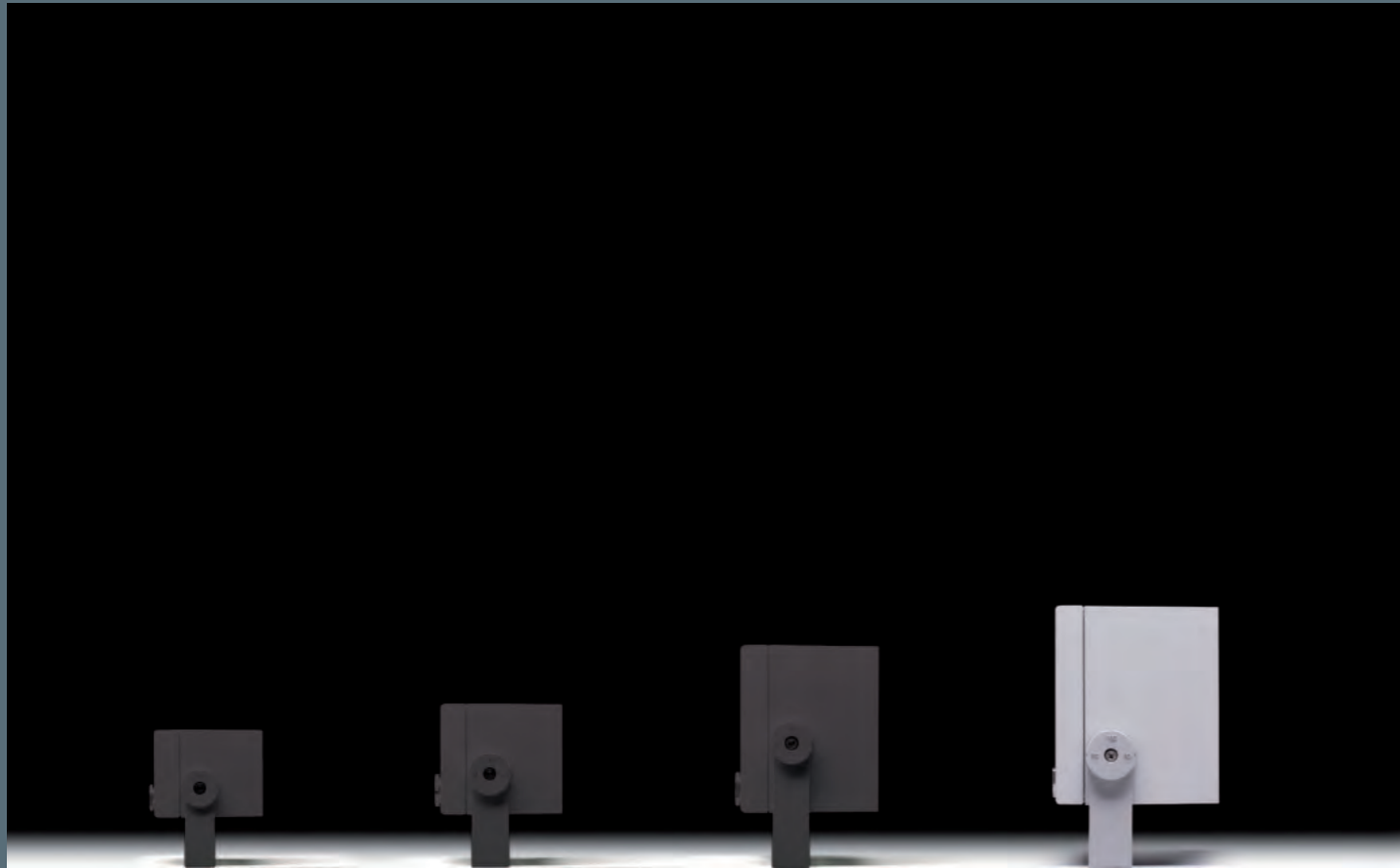
The light emitted by linear LED modules is directed into a PMMA lens uncoupled by micro prisms in exactly defined directions. From the outside the LEDs are not visible. The Comfort Optic offers both high energy efficiency and optimal glare limitation by diffraction of the point of light.



LED  
LEDs, replacement modules available







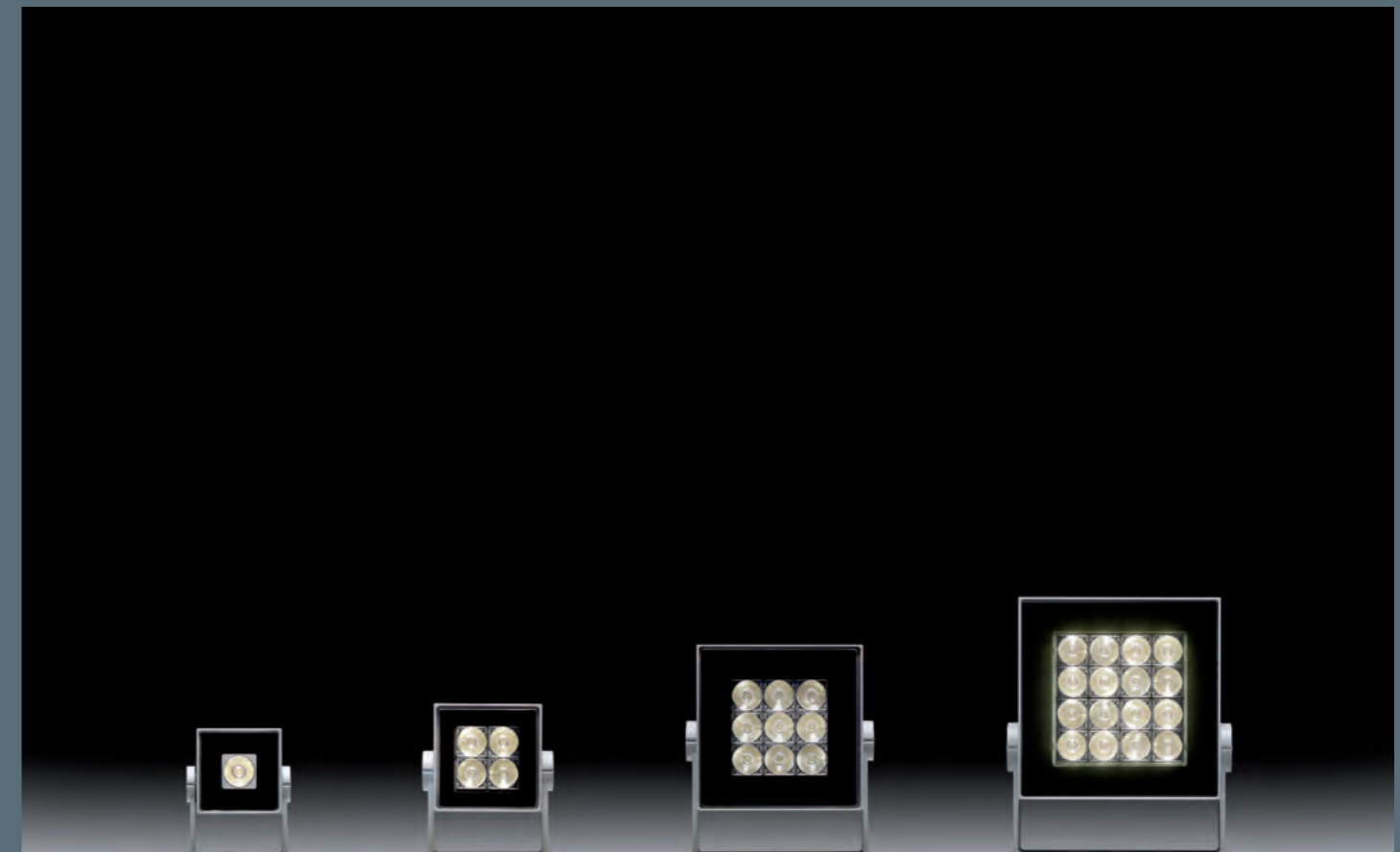
Superlight Nano is the latest generation of extremely compact floodlights. The efficient optics create narrow beam, elliptical or wide beam light distributions. The minimalist design allows the floodlights to be integrated into various different architectural environments. With integral control gear they can be connected to mains voltage. Superlight Nano are the smallest and most discreet exterior floodlights on the market.

The new, high performance Superlight Nano 4 completes the range. 16 LEDs with highly efficient optical lenses produce high levels of illuminance over long distances. Nevertheless, the dimensions of the luminaire housing are very compact, allowing the product to be integrated discreetly into any architectural surroundings.

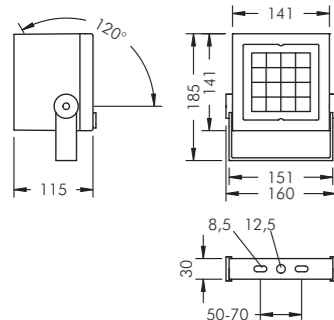


82 Baker Street, London  
Lighting design: Tony Rimmer, Studio 29, London

The floodlights come in 4 sizes and wattages. The scope of applications comprises accent lighting of architectural details and façade illumination for buildings with several stories.







### Superlight Nano 4

Equipped with 16 x 2.5 W high performance LEDs, thermal monitoring device protection class I, IP65 windage area AW 0.02 m<sup>2</sup> die cast aluminium housing, polyester powder coated, all exterior steel parts are stainless steel, tempered safety glass, silicon gasket, powder coated die cast zinc mounting bracket with tilt scale: 2 drilled holes Ø 8.5 mm, spacing 50-70 mm, 1 centre hole Ø 12.5 mm, tilt range 120°, M20 cable gland, integral driver (AC/DC)

#### Superlight Nano 4, narrow beam

Part number	Colour	Light source	Weight	Half beam angle $\gamma$
<b>8 821 046 019</b>	black	16 x LED 2.5 W	2.3 kg	6°
<b>8 821 066 019</b>	white	warm white (3000 K)		
<b>8 821 056 019</b>	silver grey			
<b>8 821 045 019</b>	black	16 x LED 2.5 W	2.3 kg	6°
<b>8 821 065 019</b>	white	neutral white (4500 K)		
<b>8 821 055 019</b>	silver grey			

#### Superlight Nano 3, linear beam spread, vertical

Part number	Colour	Light source	Weight	Half beam angle $\gamma$
<b>8 821 046 029</b>	black	16 x LED 2.5 W	2.3 kg	C 0 - 180 C 90 - 270
<b>8 821 066 029</b>	white	warm white (3000 K)		
<b>8 821 056 029</b>	silver grey			
<b>8 821 045 029</b>	black	16 x LED 2.5 W	2.3 kg	43° 8°
<b>8 821 065 029</b>	white	neutral white (4500 K)		
<b>8 821 055 029</b>	silver grey			

Part number Description  
 . . . . . **.3. Luminaire with linear beam spread, horizontal**

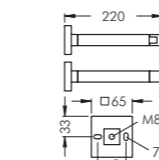
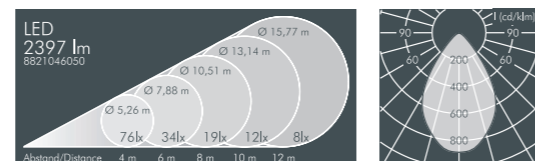
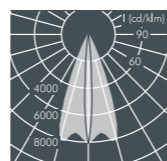
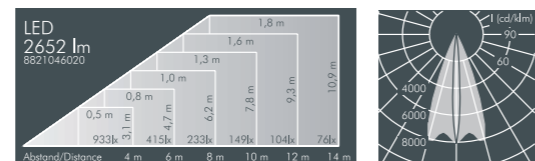
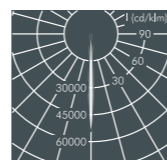
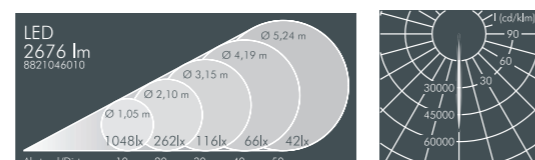
#### Superlight Nano 4, wide beam

Part number	Colour	Light source	Weight	Half beam angle $\gamma$
<b>8 821 046 059</b>	black	16 x LED 2.5 W	2.3 kg	66°
<b>8 821 066 059</b>	white	warm white (3000 K)		
<b>8 821 056 059</b>	silver grey			
<b>8 821 045 059</b>	black	16 x LED 2.5 W	2.3 kg	66°
<b>8 821 065 059</b>	white	neutral white (4500 K)		
<b>8 821 055 059</b>	silver grey			

Part number Description  
 . . . . . **.4. Luminaire with medium wide beam optics** Half beam angle  $\gamma$  32°

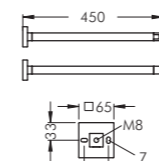
Part number Description  
 . . . . . **4.. Luminaire with 2 cable glands** for through wiring

Part number Description  
 . . . . . **1.. Dimmable luminaire (DALI)**  
 . . . . . **2.. Dimmable luminaire (1-10 V)**

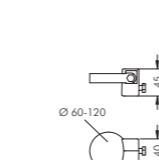


#### Accessories for Superlight Nano 4

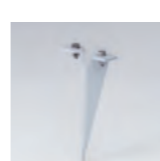
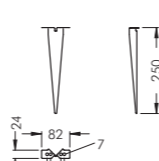
Part number	Colour	Description
<b>128 0 738 940</b>	black	<b>Wall arm 220 mm,</b>
<b>128 0 738 960</b>	white	aluminium, polyester powder coated
<b>128 0 738 950</b>	silver grey	



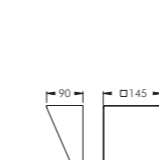
Part number	Colour	Description
<b>128 0 739 940</b>	black	<b>Wall arm 450 mm,</b>
<b>128 0 739 960</b>	white	aluminium, polyester powder coated
<b>128 0 739 950</b>	silver grey	



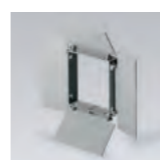
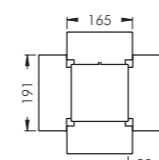
Part number	Colour	Description
<b>128 0 760 940</b>	black	<b>Pole clamp,</b> aluminium,
<b>128 0 760 960</b>	white	polyester powder coated, stainless steel strap,
<b>128 0 760 950</b>	silver grey	for mounting on poles Ø 60 - 120 mm



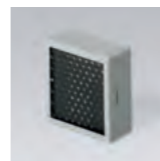
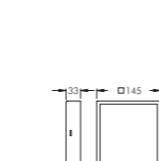
Part number	Colour	Description
<b>129 0 502 940</b>	black	<b>Earth spike,</b> stainless steel,
<b>129 0 502 960</b>	white	for use in landscaped areas
<b>129 0 502 950</b>	silver grey	



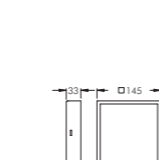
Part number	Colour	Description
<b>128 0 814 940</b>	black	<b>Cowl,</b> stainless steel,
<b>128 0 814 960</b>	white	to avoid glare from 3 directions,
<b>128 0 814 950</b>	silver grey	for retro-fitting



Part number	Colour	Description
<b>128 0 815 940</b>	black	<b>Barn doors,</b> aluminium,
<b>128 0 815 960</b>	white	to avoid glare from 4 directions,
<b>128 0 815 950</b>	silver grey	for retro-fitting



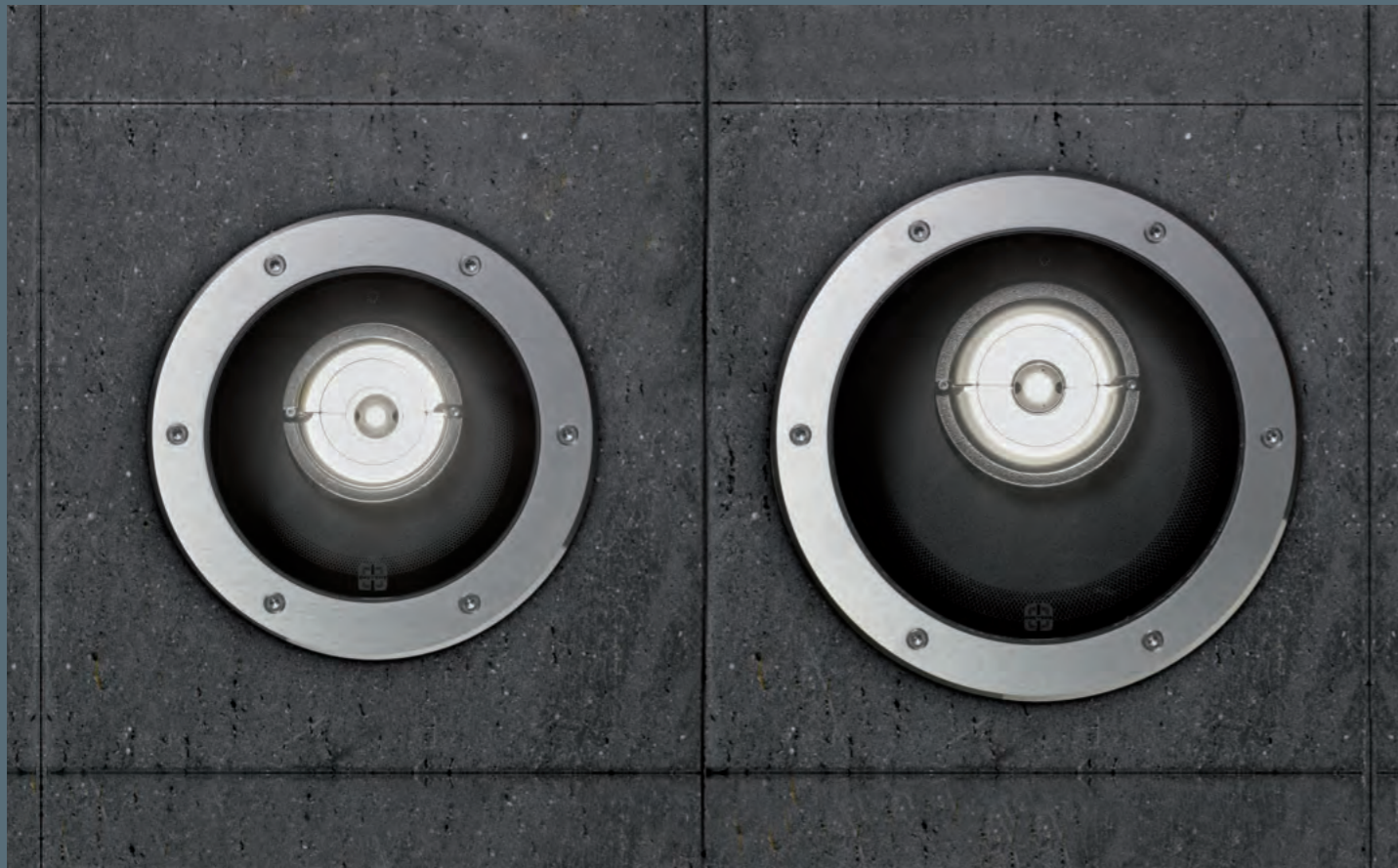
Part number	Colour	Description
<b>128 0 816 940</b>	black	<b>Carrier frame with honeycomb louvre,</b>
<b>128 0 816 960</b>	white	with safety glass,
<b>128 0 816 950</b>	silver grey	to avoid glare



Part number	Colour	Description
<b>128 0 816 941</b>	black	<b>Carrier frame,</b>
<b>128 0 816 961</b>	white	with safety glass,
<b>128 0 816 951</b>	silver grey	for colour filters, lenses and plasticfilm

LED LEDs, replacement modules available

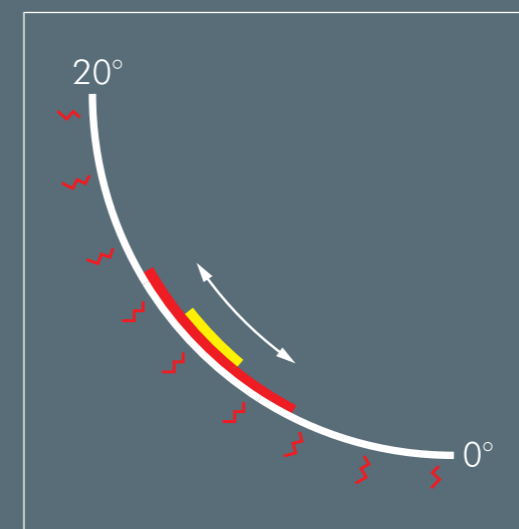




The latest generation of in-ground uplighters is designed to fulfill the demands of sophisticated lighting projects. High performance LED modules are shielded by precision-made reflectors thus offering excellent glare control. The innovative Heatslide mechanism allows the optical system to be adjusted and aimed, without compromising the heat dissipation properties. The products are high performance and flexible instruments for a wide range of different lighting tasks. Furthermore the shallow depth of these products facilitates their installation.

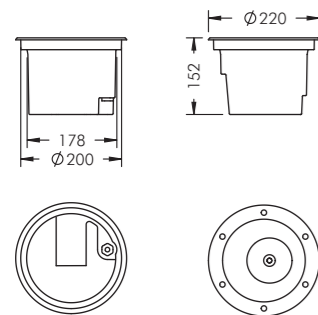


De Waag, Deventer  
Lighting design: Studio DL, Hildesheim



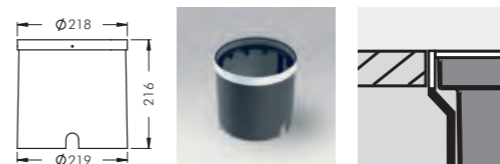
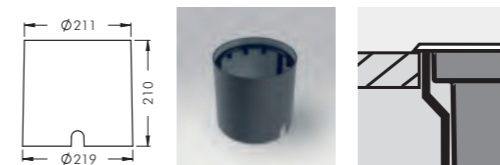
The integral Heatslide mechanism allows for tilting of the reflector whilst the LED module stays connected to the luminaire housing. This innovation ensures optimal heat dissipation at all times and a long lifetime of the LED module.





### Uplight 220 LED Adjustable optics

With high performance LED module (Zhaga), protection class I, IP67  $\blacklozenge$   $\blacktriangle$   $\blacktriangledown$ , IK10 cast aluminium housing, double powder coated, high gloss aluminium reflector, tilt range 0-20°, lockable, with Heatslide mechanism for optimal heat dissipation, all exterior steel parts are stainless steel, tempered safety glass flush with frame, for loads up to max. 5000 kg (according to DIN IEC 60598-2-13), silicon gasket, 316 grade stainless steel trim ring with 6 stainless steel screws, M20 cable gland, with 0.8 m cable type H05RN-F3G1, integral driver (AC/DC)

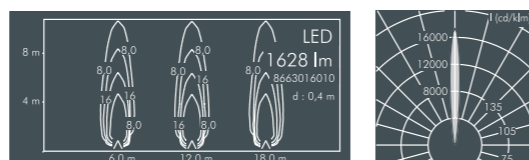


#### Accessories Uplight 220

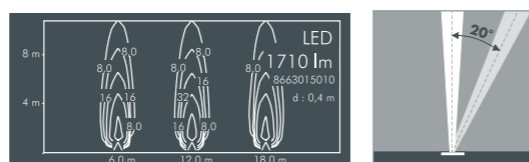
Part number	Description
<b>126 0 338 000</b>	<b>Polypropylene installation sleeve</b> , for luminaires with overlapping trim ring (for luminaires <b>8 663 . . . . .</b> )
<b>126 0 338 060</b>	<b>Polypropylene installation sleeve</b> , for luminaires with trim ring for flush mounting (for luminaires <b>8 664 . . . . .</b> )

#### Uplight 220, adjustable optics, narrow beam

Part number	Light source	Temperature	Tilt range	Half beam angle $\gamma$
<b>8 663 016 019</b>	1 x LED module 21 W warm white (3000 K)	32 °C	0 – 20°	9°

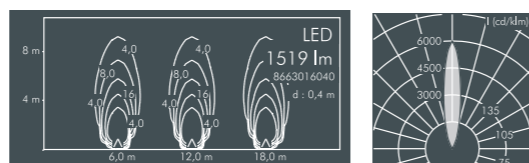


Part number	Light source	Temperature	Tilt range	Half beam angle $\gamma$
<b>8 663 015 019</b>	1 x LED module 21 W neutral white (4000 K)	32 °C	0 – 20°	9°

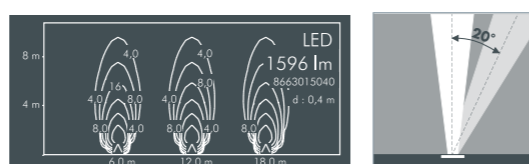


#### Uplight 220, adjustable optics, medium wide beam

Part number	Light source	Temperature	Tilt range	Half beam angle $\gamma$
<b>8 663 016 049</b>	1 x LED module 21 W warm white (3000 K)	30 °C	0 – 20°	18°



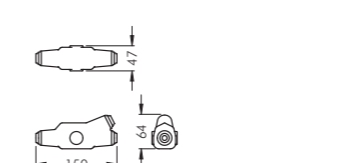
Part number	Light source	Temperature	Tilt range	Half beam angle $\gamma$
<b>8 663 015 049</b>	1 x LED module 21 W neutral white (4000 K)	30 °C	0 – 20°	18°



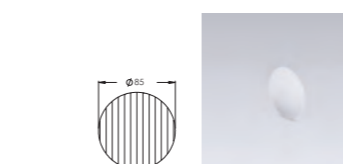
Part number	Description
<b>126 0 339 940</b>	<b>Radial louvre</b> , to reduce lateral glare



Part number	Description
<b>126 0 351 940</b>	<b>Radial louvre</b> , to reduce lateral glare



Part number	Description
<b>226 0 161 000</b>	<b>Connection box</b> , for single connection to one luminaire or for through wiring with buried cable. For luminaires supplied with cable and installation sleeve.



Accessories Uplight 220, narrow beam		Half beam angle $\gamma$	
Part number	Description	C 0-180	C 90-270
<b>126 0 340 000</b>	<b>Ribbed glass spreader lense</b> , for linear beam control, continuously adjustable through 360°	9°	29°

Part number	Description
<b>. . . 1 . . . .</b>	<b>Luminaire with slip resistant glass*</b> (R13 according to DIN EN 51130)

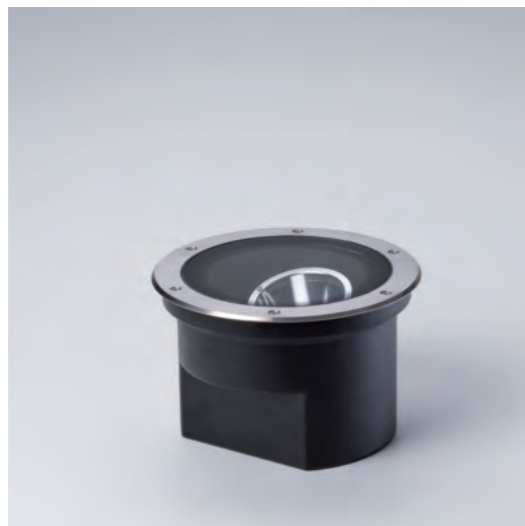
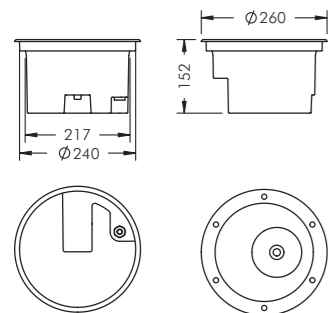
\*The light distribution becomes more diffuse

Part number	Description
<b>8 664 . . . . .</b>	<b>Luminaire for installation flush with surrounding surface</b> (in combination with installation sleeve 126 0 338 060)

#### LED

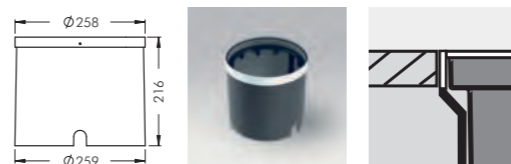
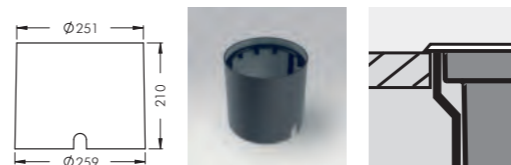
LEDs, replacement modules available





### Uplight 260 LED Adjustable optics

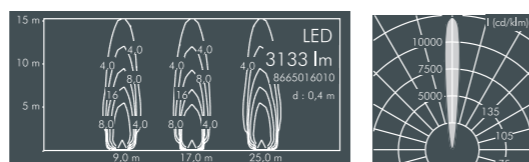
With high performance LED module (Zhaga), protection class I, IP67  $\blacklozenge$   $\blacktriangle$   $\blacktriangledown$ , IK10 cast aluminium housing, double powder coated, high gloss aluminium reflector, tilt range 0-20°, lockable, with Heatslide mechanism for optimal heat dissipation, all exterior steel parts are stainless steel, tempered safety glass flush with frame, for loads up to max. 5000 kg (according to DIN IEC 60598-2-13), silicon gasket, 316 grade stainless steel trim ring with 6 stainless steel screws, M20 cable gland, with 0.8 m cable type H05RN-F3G1, integral driver



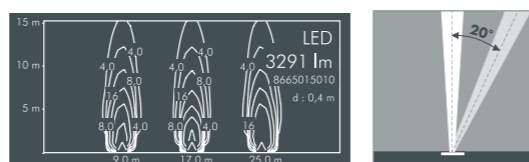
Accessories Uplight 260	
Part number	Description
<b>126 0 341 000</b>	<b>Polypropylene installation sleeve</b> , for luminaires with overlapping trim ring (for luminaires <b>8 665 . . . . .</b> )
<b>126 0 341 060</b>	<b>Polypropylene installation sleeve</b> , for luminaires with trim ring for flush mounting (for luminaires <b>8 666 . . . . .</b> )

#### Uplight 260, adjustable optics, narrow beam

Part number	Light source	Temperature	Tilt range	Half beam angle $\gamma$
<b>8 665 016 019</b>	1 x LED module 37 W warm white (3000 K)	36 °C	0 – 20°	11°

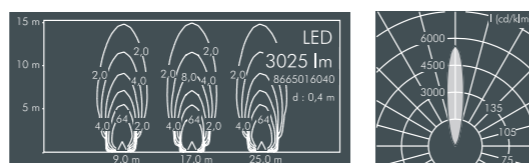


Part number	Light source	Temperature	Tilt range	Half beam angle $\gamma$
<b>8 665 015 019</b>	1 x LED module 37 W neutral white (4000 K)	36 °C	0 – 20°	11°

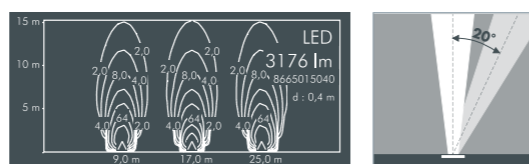


#### Uplight 260, adjustable optics, medium wide beam

Part number	Light source	Temperature	Tilt range	Half beam angle $\gamma$
<b>8 665 016 049</b>	1 x LED module 37 W warm white (3000 K)	34 °C	0 – 20°	19°



Part number	Light source	Temperature	Tilt range	Half beam angle $\gamma$
<b>8 665 015 049</b>	1 x LED module 37 W neutral white (4000 K)	34 °C	0 – 20°	19°



Part number	Description
<b>. . . . . 1 . .</b>	<b>Dimmable version (DALI)</b>

Part number	Description
<b>. . . . . 1 . . . .</b>	<b>Luminaire with slip resistant glass*</b> (R13 according to DIN EN 51130)

\*The light distribution becomes more diffuse

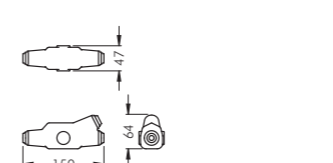
Part number	Description
<b>8 666 . . . . .</b>	<b>Luminaire for installation flush with surrounding surface</b> (in combination with installation sleeve 126 0 341 060)



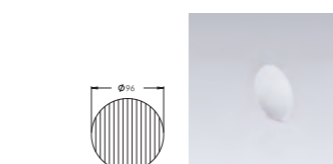
Part number	Description
<b>126 0 342 940</b>	<b>Radial louvre</b> , to reduce lateral glare



Part number	Description
<b>126 0 352 940</b>	<b>Radial louvre</b> , to reduce lateral glare



Part number	Description
<b>226 0 161 000</b>	<b>Connection box</b> , for single connection to one luminaire or for through wiring with buried cable. For luminaires supplied with cable and installation sleeve.



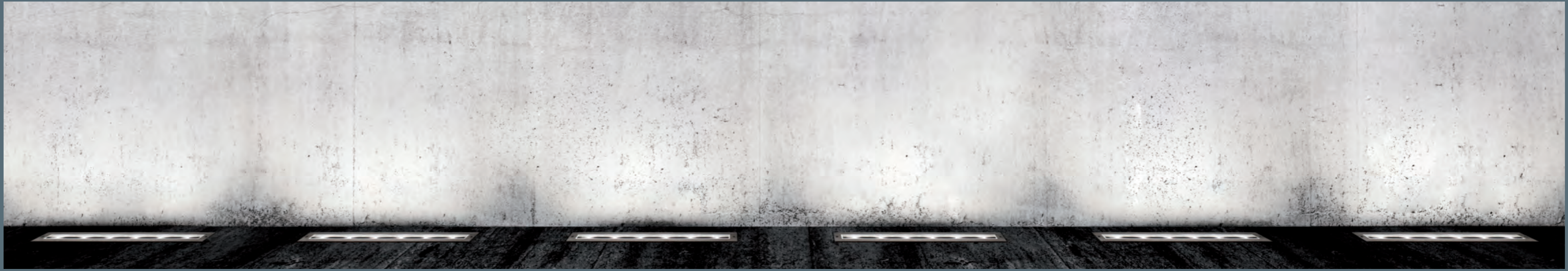
Accessories Uplight 260, narrow beam		Half beam angle $\gamma$	
Part number	Description	C 0-180	C 90-270
<b>126 0 343 000</b>	<b>Ribbed glass spreader lense</b> , for linear beam control, continuously adjustable through 360°	11°	31°

**LED**

LEDs, replacement modules available







The new series of linear in-ground uplighters is a versatile and slim luminaire for discrete installation. The products are available with wall washer or asymmetrical distribution optics. This allows for optimal results, depending on the distance between the façade and luminaire. Thanks to their very wide beam distribution, the wall washer optics create very little shadow between luminaires. The range is completed with a diffuse wide beam version as an orientation marker.



Wall washer optics for façade illumination from a short distance.

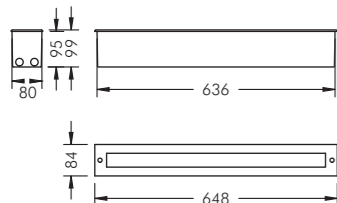


Asymmetrical optics for façade illumination from a greater distance.



Orientation luminaire with diffuse light distribution.



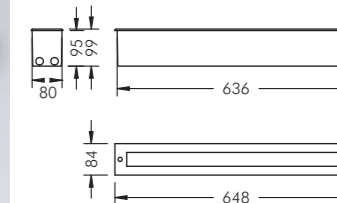


### Upline 600

With high performance LEDs, integral temperature monitoring device, protection class I, IP67  $\blacklozenge\blacklozenge\blacklozenge$  die cast aluminium housing, double powder coated, tempered safety glass flush with frame, for loads up to max. 2000 kg (according to DIN IEC 60598-2-13), silicon gasket, 316 grade stainless steel cover frame closed with 2 x 316 grade stainless steel screws, stainless steel cable gland, 1 m cable H07RN-F3G1, with polypropylene recess housing, integral potted driver (AC/DC)

### Upline 600

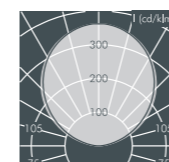
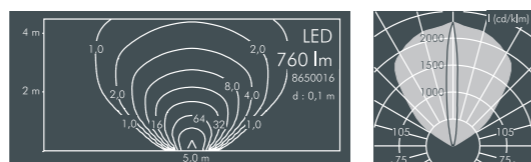
With linear LED module (Zhaga), integral temperature monitoring device, protection class I, IP67  $\blacklozenge\blacklozenge\blacklozenge$  die cast aluminium housing, double powder coated, tempered safety glass flush with frame, for loads up to max. 2000 kg (according to DIN IEC 60598-2-13), silicon gasket, 316 grade stainless steel cover frame closed with 2 x 316 grade stainless steel screws, stainless steel cable gland, 1 m cable H07RN-F3G1, with polypropylene recess housing, integral potted driver (AC/DC)



#### Upline 600, wall washer

Part number	Light source	Weight	Half beam angle $\gamma$	
			C 0 – 180	C 90 – 270
<b>8 650 016 009</b>	6 x LED 2.5 W warm white (3000 K)	3.6 kg	10°	97°

Part number	Light source	Weight	Half beam angle $\gamma$	
			C 0 – 180	C 90 – 270
<b>8 650 015 009</b>	6 x LED 2.5 W neutral white (4500 K)	3.6 kg	10°	97°



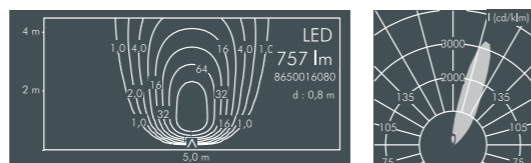
#### Upline 600, orientation luminaire

Part number	Light source	Weight	Half beam angle $\gamma$	
			C 0 – 180	C 90 – 270
<b>8 650 016 099</b>	2 x LED linear modules 9.5 W warm white (3000 K)	3.6 kg	108°	112°

Part number	Light source	Weight	Half beam angle $\gamma$	
			C 0 – 180	C 90 – 270
<b>8 650 015 099</b>	2 x LED linear modules 9.5 W neutral white (4000 K)	3.6 kg	108°	112°

#### Upline 600, asymmetrical beam

Part number	Light source	Weight	Main beam angle $\gamma$
<b>8 650 016 089</b>	6 x LED 2.5 W warm white (3000 K)	3.6 kg	17°



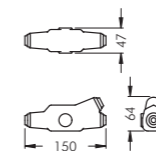
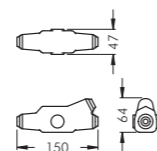
Part number	Light source	Weight	Main beam angle $\gamma$
<b>8 650 015 089</b>	6 x LED 2.5 W neutral white (4500 K)	3.6 kg	17°

Part number	Description
<b>... 1 ..</b>	<b>Dimmable version (DALI)</b>

Part number	Description
<b>... 1 ..</b>	<b>Dimmable version (DALI)</b>

#### Accessories Upline 600, wall washer and asymmetrical beam

Part number	Description
<b>226 0 161 000</b>	<b>Connection box</b> , for single connection to one luminaire or for through wiring with buried cable. For luminaires supplied with cable and recess housing

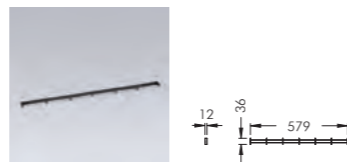


#### Accessories Upline 600, orientation luminaire

Part number	Description
<b>226 0 161 000</b>	<b>Connection box</b> , for single connection to one luminaire or for through wiring with buried cable. For luminaires supplied with cable and recess housing

#### Accessories Upline 600, wall washer

Part number	Description
<b>126 0 350 940</b>	<b>Louvre</b> , stainless steel, to avoid glare



**LED**  
LEDs, replacement modules available

**LED**  
LEDs, replacement modules available



Willy Meyer+Sohn GmbH+Co. KG  
Stemmessiepener Weg 5  
D-58675 Hemer  
Telephone: +49 (0) 23 72/98 91-0  
Telefax Sales: +49 (0) 23 72/98 91-38  
Telefax Export: +49 (0) 23 72/98 91-48  
E-mail: [info@meyer-lighting.com](mailto:info@meyer-lighting.com)  
[www.meyer-lighting.com](http://www.meyer-lighting.com)

