



IWASAKI

LEDiOC

LED IWASAKI OPTICAL CONTROL

Heartfelt LED Lighting.

As street lighting, it evokes peace of mind.

As factory lighting, it represents safety.

As stadium lighting, it evokes an anticipation of excitement.

Light becomes an emotion through the eyes of the beholder.

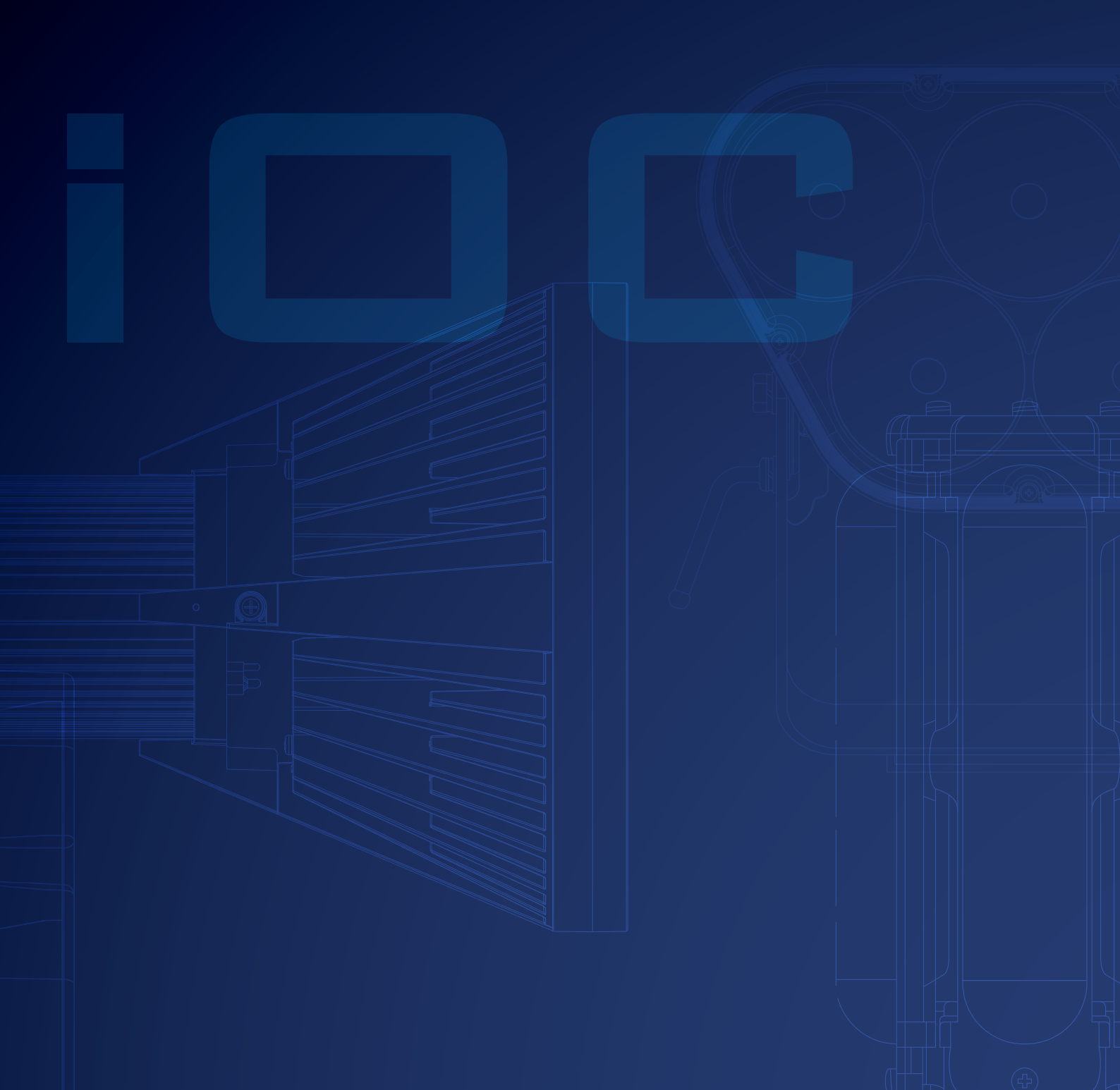
It can relax, reassure, and reinvigorate.

This is why we want to deliver it properly.

Resulting from the coming together of LED technology and Iwasaki's unique luminous intensity distribution techniques, LEDioc is a range of products that is continually to developing and evolving.

LEDioc provides advanced lighting technology, with a personal touch.





Iwasaki Electric Company Profile — Creator of Light —

Founded in 1944, Iwasaki Electric Company has proudly continued to supply a broad range of lighting solutions to the world for 70 years, having produced over 5,500 different light sources during this time. Building upon the technological expertise gained over this period, Iwasaki was amongst the forerunners in the adoption of LED, incorporating them into a wide range of applications such as street lighting, landscape lighting, and security lighting.

Additionally, expansion has not been limited to its product range. Since the 1990s, Iwasaki has continued to expand into international markets, bringing its products to an ever wider global market.

The strength of Iwasaki lies within its ability to control light.

Through this control the right light is directed to the right places, ensuring that a high quality light source creates a high quality lighting installation – essential qualities in areas such as street, public, and industrial lighting, which are amongst the core areas of expertise for Iwasaki.

It is thanks to this expertise that has been honed and refined through many years of experience in these fields that Iwasaki has been able to develop a broad range of LED light sources.

It is this expertise that Iwasaki will maximize in its aim to create further technological advances, to develop light sources to enhance people's lives.



→ LED high-ceiling lighting fixtures (LEDiOC HIGH-BAY Λ) ensure a brightness of 500lx using the same number of fixtures and positions as the existing lighting fixtures, thereby realizing a substantial level of energy conservation.

↓ A view of the building during the day.



Repair of Lighting Fixtures at Oberlin University's Koushi Gymnasium / Machida City, Tokyo

LED high ceiling lights for the gymnasium realize large-scale energy savings.

LEDiOC HIGH-BAY Λ LAMBDA

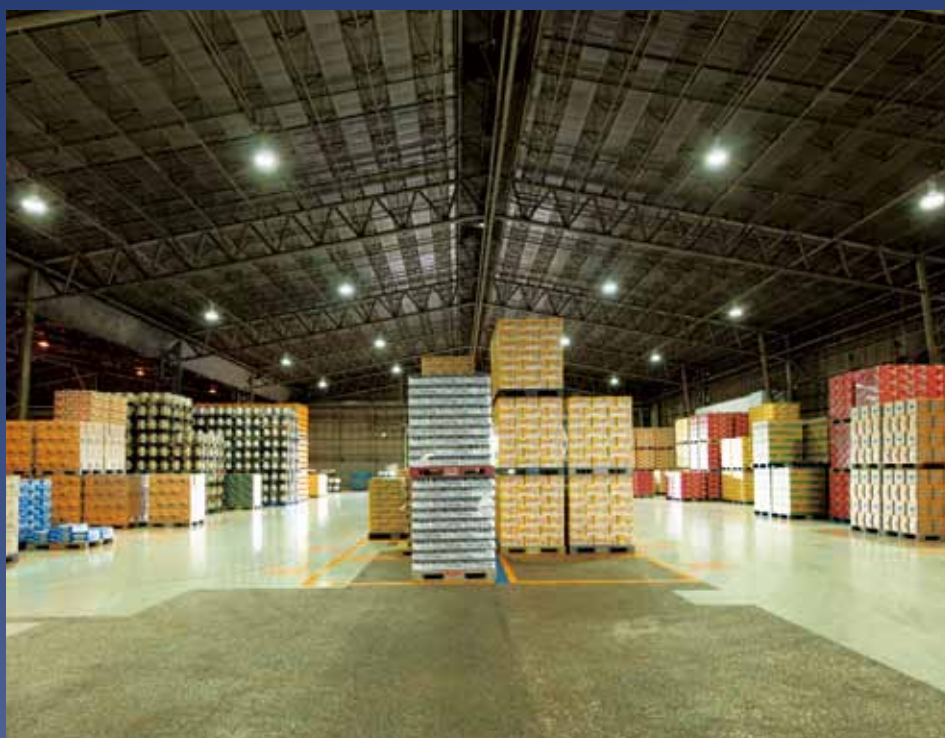
LED HIGH-BAY LIGHT

Kirin Brewery Company's Nagoya Factory / Kiyosu City, Aichi Prefecture

Switch of warehouse high-ceiling lighting to LED types bring both improved illuminance and energy savings.

→ LED high-ceiling lighting fixtures (LEDiOC HIGH-BAY Λ) ensure a sufficient brightness level as they light up roughly 1,200 square meters of warehouse area.

↓ The installed high-performance, high-output LED high-ceiling lighting fixtures (LEDiOC HIGH-BAY Λ).



→ The LEDiOC FLOOD BLITZ's upgraded vertical illuminance capability enhances the visibility of the balls as the light sufficiently covers the entire 200 yards up to the net on the farther side.



Accordia Garden golf range, North Chiba / Chiba City, Chiba Prefecture

High output LED floodlights used to meet energy saving needs while maintaining the high quality illumination required for night-time golf activities.

LEDiOC FLOOD BLITZ

LED OUTDOOR HIGH POWER FLOODLIGHT

Shinminato Bridge (Harbor Road Toyama Shinminato Tozai Line) / Imizu City, Toyama Prefecture

The largest cable-stayed bridge on the Sea of Japan coast is now elegantly profiled at night with power-conserving LED light.



↑ The installed lighting fixtures that light up the main towers (high-output LEDiOC FLOOD BLITZ LED floodlights).

→ A panoramic view of Shinminato Bridge from Kaiwomaru Park in the west district. Together with the Kaiwomaru, a sailing ship also called "The Lady of the Sea," the lit-up Shinminato Bridge makes for some charming night-time scenery.



→ LEDiOC FLOOD NEO fixtures, each featuring a 95W LED array, are installed in the atrium ceiling.

↓ External view of Yokohama Municipal Office building.



An open space for citizens at the Yokohama Municipal Office / Yokohama City, Kanagawa Prefecture

New LED lighting significantly saves energy and achieves a bright visual environment.

LEDiOC FLOOD NEO

LED OUTDOOR HIGH POWER FLOODLIGHT

LAWSON's Kyotanabe Yamate Nishi store / Kyotanabe City, Kyoto

The parking lot of a modern, environmentally-friendly convenience store is efficiently illuminated by LED lighting contributing to a reduction in energy consumption and CO₂ emissions.

→ View of the store exterior with an impressive new façade. LED floodlights (LEDiOC FLOOD NEO) using energy-saving LED light sources are placed in the parking lot to efficiently illuminate the required areas.

↓ The LED floodlight (LEDiOC FLOOD NEO) in the parking lot achieves a brightness equal to that of a 500W mercury lamp type.





LEDiOC LED LIGHT-BULB

LED LAMP

Nishi Park Lighting Pole Renovation Work / Fukuoka City, Fukuoka Prefecture

Large-scale power savings achieved in retrofit using LED lamps for a famous cherry-blossom viewing park looking onto Hakata Bay.

↑ The light from the high-colour rendering LEDiOC LED light bulb makes the greenery seem more natural.

→ The avenue lighting was changed to LED lights, which bathe the walkways in light for safety and comfort during the night.

↓ The change to LED lighting has been realized by leaving the lighting fixtures for the existing design in place and just changing the lamps and control gear.



A lighting environment evaluation system **QUAPIX**

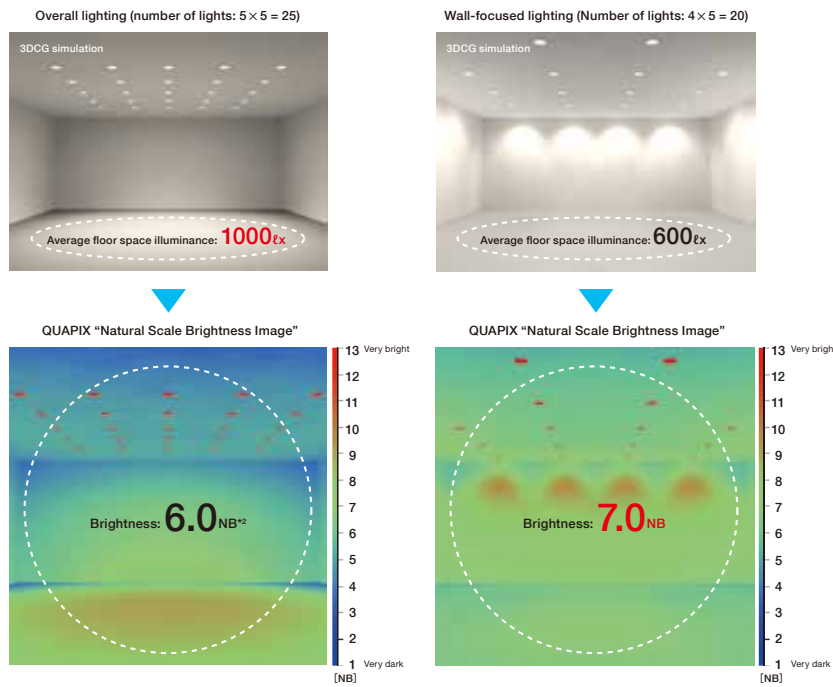
An analytical tool enabling the creation of high-quality, energy-saving lighting designs

With regard to brightness and illuminance, perceptual experiences, such as how bright people feel something is or how easily an illuminated object can be seen, cannot be evaluated through feeling and intuition. Developed as a new method for evaluating lighting environments, the QUAPIX system can properly evaluate and assess these perceptual experiences known as qualia.



Simulating a “bright space”

Using Natural Scale Brightness (NB) Images^{*1}, the brightness of a space according to differences in lighting arrangements is compared. Using QUAPIX, the space can be brightened even when the number of luminaries is reduced.



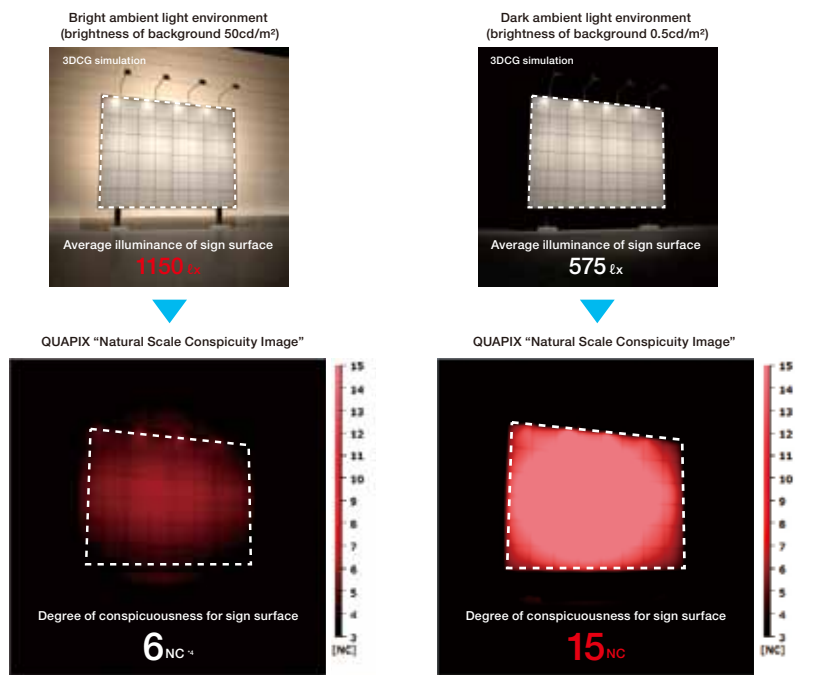
Simulation conditions

Room: Depth – 10 meters, Width – 10 meters,
Height – 4 meters
Reflectance ratio: Floor – 0.1, Wall – 0.5, Ceiling – 0.7
Device: LC46051
Lamp: MT150CEH-W/S
Maintenance Factor: 0.61

Note 1: Commercialized by Iwasaki Electric Company Ltd. using patented technology (Patent no. 4016072) belonging to the Tokyo Institute of Technology and managed by Visual Technology Laboratory Inc.
Note 2: NB represents Natural Scale Brightness, a scale for rating brightness perceived by humans

Simulating “signage appearance”

Using Natural Scale Conspicuity (NC) Images^{*3}, the degree of conspicuousness of signage according to the brightness of the ambient light environment is compared. The simulation reveals that when the surrounding area is dark, sufficient conspicuousness can be achieved even with less energy employed.



**Simulation conditions
(for bright ambient light environment)^{*5}**

Sign surface: Height – 6 meters, Width – 8 meters
Reflectance ratio: 50%
Device: HCF475BHE Lights × 4
Lamp: MT400CE-W/BH

Note 3: Natural Scale Conspicuity (NC) Images have been jointly developed by Visual Technology Laboratory Inc. and Iwasaki Electric Company Ltd. (Patent application no. 2008-150387)
Note 4: NC represents Natural Scale Conspicuity, a scale for rating the conspicuousness of a target item
Note 5: Sign illuminance in the case of the dark ambient light environment was set at 50% of that of the illuminance in the bright ambient light environment.


How to use this catalogue

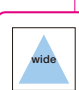
The following example shows how products are listed. Different types of luminaires are presented differently.

IP20

220 to 240V

Power supply unit built-in





Optical performance, function and structural features

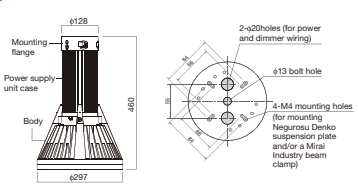
EHCL2101W/650/D **Product model**

Rated luminous flux (luminaire luminous flux): 21,000lm
 Power consumption: 210W
 Luminous efficacy: 100.0lm/W
 LED module life: 60,000 hours
 Light colour: Equivalent to 5,000K
 Colour rendering index(Ra): 65

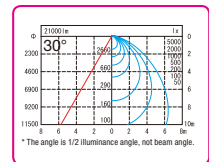
Illumination design performance data

Body (except a front part): Magnesium alloy
 Front part: polycarbonate resin
 Power supply unit case: Extruded aluminum
 Globe: Plastic
 Finish colour: White
 Weight: 6.5kg
 Safety wire provided

Product specification



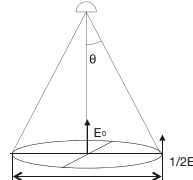
External dimension drawing



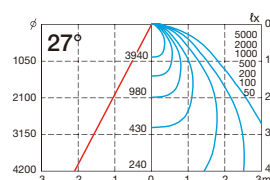
Illuminance distribution diagram (reference)

* The figures in the diagram indicate initial horizontal illuminance (unit: lx)

1/2 illuminance angle and Direct horizontal illuminance

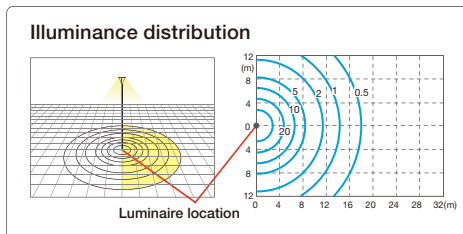


1/2 illuminance angle indicates the spread of light by the angle (θ) formed by a line from the luminaire to the area directly below it and a line that connects the luminaire and the point that is half the horizontal illuminance (E_0) of the horizontal illuminance below the luminaire.

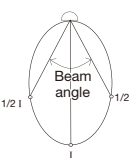


Direct horizontal illuminance data indicates the range within which the horizontal illuminance expressed by the curves can be obtained using the distance from the luminaire along the vertical axis and the horizontal distance from a point directly underneath the luminaire along the horizontal axis.

* The maintenance factor is 1.0.



Beam angle



Beam angle, an indicator that tells you how far the light will distribute, indicates the angle between the two directions opposed to each other over the beam axis where the luminous intensity is half that of the maximum luminous intensity (1).

CONTENTS

Introduction.....	1	
Project Reference	3	
A lighting environment evaluation system		
-QUAPIX-	7	
LED HIGH-BAY LIGHT		
-LEDioc HIGH-BAY Λ (Lambda)-	9	
LED OUTDOOR HIGH POWER FLOODLIGHT		
-LEDioc FLOOD BLITZ-	13	
LED OUTDOOR HIGH POWER FLOODLIGHT		
-LEDioc FLOOD NEO-	17	
LED OUTDOOR FLOODLIGHT/RGB FLOODLIGHT		21
LED WALL WASHER LIGHT/RGB WALL WASHER LIGHT		23
LED STREET LIGHT		24
LED LAMP -LEDioc LED LIGHT-BULB-.....		25
LED LAMP -LED-MR16/PAR-.....		29
Website		33
Showroom -i Labo-		34

LED!DC HIGH-BAY ^{LAMBDA} Λ

LED HIGH-BAY LIGHT



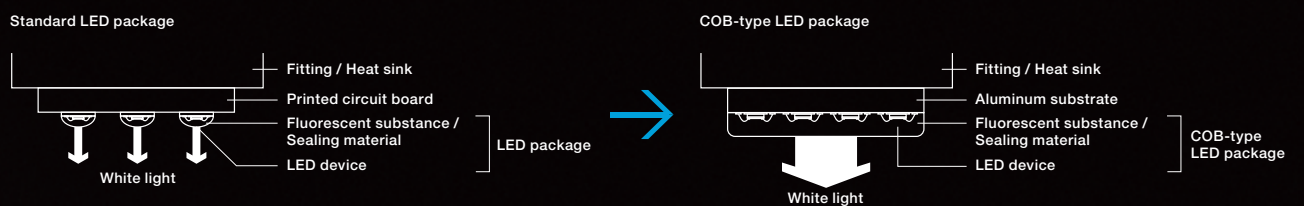
- Utilizes highly efficient/high-powered COB-type LED package
- Metal halide lamp capable of delivering brightness equivalent to 400W
- Highly efficient 100lm/W(Ra65)
- Proprietary light distribution control technology allows for two types of luminous intensity distribution: medium beam and wide beam
- Lightweight design utilizing magnesium alloy body
- Built-in dimming (PWM method 50~100%)
- Quickly reaches full brightness
- Long life 60,000 hours



Photo: Example of construction (image)

Utilizes highly efficient/high-powered COB-type LED package

Through a new optical design utilizing both a lens + a mirror, and making highly efficient use of electric power, lighting with top-class energy-saving performance has been achieved. With COB-type (Chip on board) lighting, large numbers of LED devices are mounting directly to the substrate. Thus, because light is emitted from a single, uniform surface, an evenly bright, natural lighting environment close to that created by surface emission can be achieved.



IP20

220 to 240V

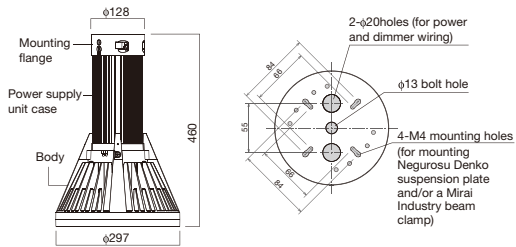
Power supply unit built-in



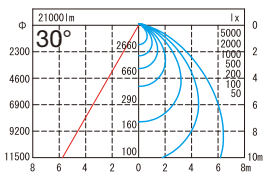
EHCL2101W/650/D

Rated luminous flux (luminaire luminous flux): 21,000lm
Power consumption: 210W
Luminous efficacy: 100.0lm/W
LED module life: 60,000 hours
Light colour: Equivalent to 5,000K
Colour rendering index(Ra): 65

Body (except a front part): Magnesium alloy
Power supply unit case: Extruded aluminum
Globe: Plastic
Finish colour: White
Weight: 6.5kg
Safety wire provided



EHCL2101W/650/D



* The angle is 1/2 illuminance angle, not beam angle.

* Cool white (equivalent to 4,000K), warm white (equivalent to 3,000K) can be special ordered.



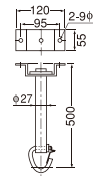
ACCESSORIES

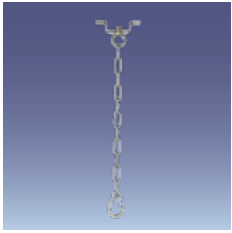


Eyebolt
HB-I-BOLT/M10
Material: Steel
With M10 nut



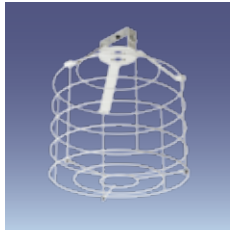
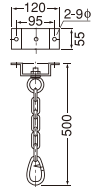
Pipe pendant
FB11
Finish: Electro-galvanizing
Weight: 1.1kg





**Chain pendant
FB21**

Finish: Electro-galvanizing
Weight: 700g



**Overall guard
TGHC221**

Body: Low carbon steel wire rods
Mounting plate: Steel
Weight: 5.6kg



Installation example

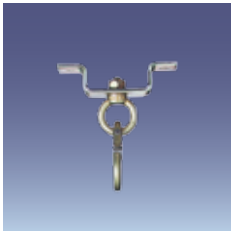


**Front diffuse cover
PEHCL221**

Body: Low carbon steel wire rods
Panel: Polycarbonate
Weight: 0.9kg

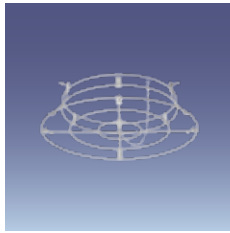
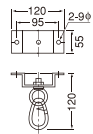


Installation example



**Hook pendant
FB31**

Finish: Electro-galvanizing
Weight: 450g



**Front guard
GEHCL221**

Body: Low carbon steel wire rods
Weight: 0.7kg



Installation example

LED!OG FLOOD BLITZ

LED OUTDOOR HIGH POWER FLOODLIGHT



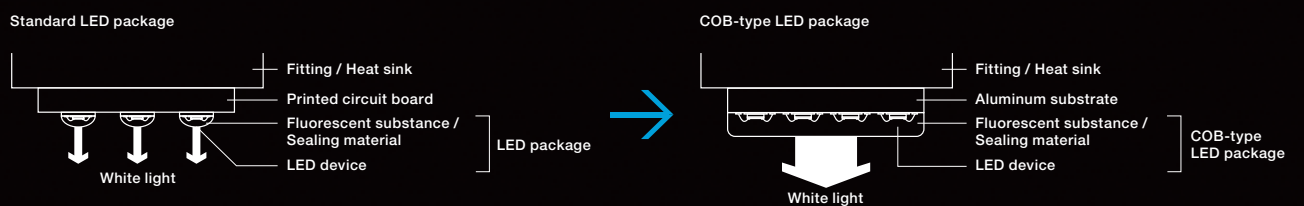
- Utilizes highly efficient/high-powered COB-type LED package
- Metal halide lamp capable of delivering brightness equivalent to 1000W/400W
- Proprietary light distribution control technology allows for outstanding light concentration
- Finishing with a reflector and globe combination allows for three types of luminous intensity distribution: narrow, medium, and wide beam
- Any position structure allows for various mounting directions and installation angles
- Quickly reaches full brightness
- Long life 40,000 hours



Illumination of Catholic Hirosaki Church / Hirosaki City, Aomori Prefecture
 Beautiful church in a Romanesque style is illuminated to give the impression of solemnity.

Utilizes highly efficient/high-powered COB-type LED package

Through a new optical design utilizing both a lens + a mirror, and making highly efficient use of electric power, lighting with top-class energy-saving performance has been achieved. With COB-type (Chip on board) lighting, large numbers of LED devices are mounting directly to the substrate. Thus, because light is emitted from a single, uniform surface, an evenly bright, natural lighting environment close to that created by surface emission can be achieved.



400W TYPE

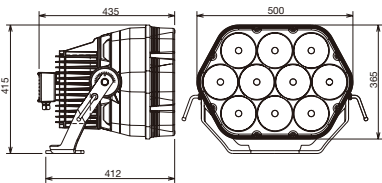
- IP65
- 100 to 240V
- Power supply unit built-in



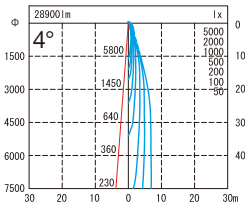
E4021N/SA1/2.4

Rated luminous flux (luminaire luminous flux): 28,900lm
Power consumption: 424W(100V), 406W(200V), 402W(240V)
Luminous efficacy: 68.2lm/W(100V), 71.2lm/W(200V), 71.9lm/W(240V)
LED module life: 40,000 hours
Light colour: Equivalent to 5,000K
Colour rendering index(Ra): 68

Body: Diecast aluminum
Reflector: Diecast aluminum
Front cover: Plastic (clear)
Arm with stand: Steel plate (hot dip galvanizing)
Finish colour: Metallic grey
Installation angle: Any position (no limitation)
Weight: 28kg

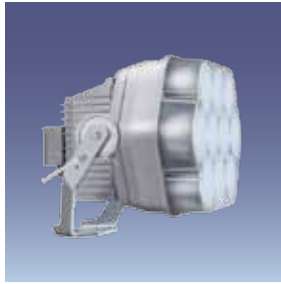


E4021N/SA1/2.4



* The angle is 1/2 illuminance angle, not beam angle.

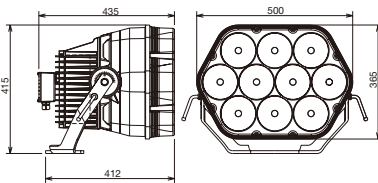
- IP65
- 100 to 240V
- Power supply unit built-in



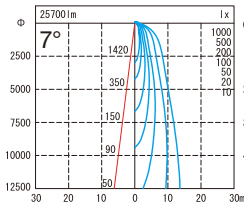
E4022N/SA1/2.4

Rated luminous flux (luminaire luminous flux): 25,700lm
Power consumption: 424W(100V), 406W(200V), 402W(240V)
Luminous efficacy: 60.6lm/W(100V), 63.3lm/W(200V), 63.9lm/W(240V)
LED module life: 40,000 hours
Light colour: Equivalent to 5,000K
Colour rendering index(Ra): 68

Body: Diecast aluminum
Reflector: Diecast aluminum
Front cover: Plastic (frosted)
Arm with stand: Steel plate (hot dip galvanizing)
Finish colour: Metallic grey
Installation angle: Any position (no limitation)
Weight: 28kg

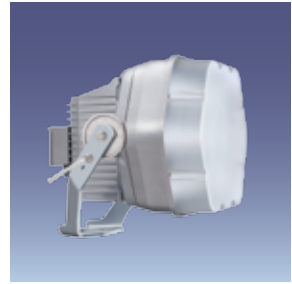


E4022N/SA1/2.4



* The angle is 1/2 illuminance angle, not beam angle.

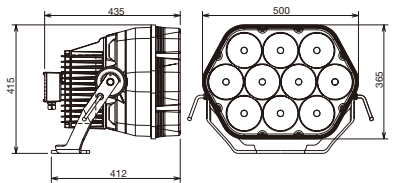
- IP65
- 100 to 240V
- Power supply unit built-in



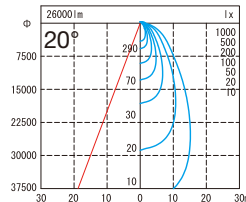
E4023N/SA1/2.4

Rated luminous flux (luminaire luminous flux): 26,000lm
Power consumption: 424W(100V), 406W(200V), 402W(240V)
Luminous efficacy: 61.3lm/W(100V), 64.0lm/W(200V), 64.7lm/W(240V)
LED module life: 40,000 hours
Light colour: Equivalent to 5,000K
Colour rendering index(Ra): 68

Body: Diecast aluminum
Reflector: Diecast aluminum
Front cover: Plastic (frosted)
Arm with stand: Steel plate (hot dip galvanizing)
Finish colour: Metallic grey
Installation angle: Any position (no limitation)
Weight: 28kg



E4023N/SA1/2.4



* The angle is 1/2 illuminance angle, not beam angle.

200W TYPE

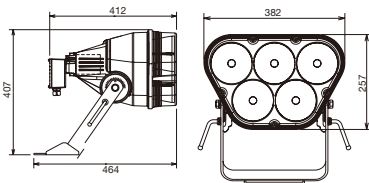
- IP65
- 100 to 240V
- Power supply unit built-in



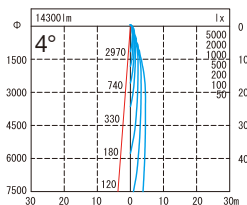
E2021N/SA1/2.4

Rated luminous flux (luminaire luminous flux): 14,300lm
Power consumption: 212W(100V), 203W(200V), 201W(240V)
Luminous efficacy: 67.5lm/W(100V), 70.4lm/W(200V), 71.1lm/W(240V)
LED module life: 40,000 hours
Light colour: Equivalent to 5,000K
Colour rendering index(Ra): 68

- Body:** Diecast aluminum
- Reflector:** Diecast aluminum
- Front cover:** Plastic (clear)
- Arm with stand:** Steel plate (hot dip galvanizing)
- Finish colour:** Metallic grey
- Installation angle:** Any position (no limitation)
- Weight:** 16kg



E2021N/SA1/2.4



* The angle is 1/2 illuminance angle, not beam angle.

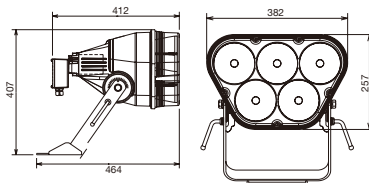
- IP65
- 100 to 240V
- Power supply unit built-in



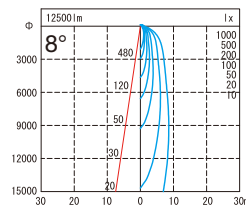
E2022N/SA1/2.4

Rated luminous flux (luminaire luminous flux): 12,500lm
Power consumption: 212W(100V), 203W(200V), 201W(240V)
Luminous efficacy: 59.0lm/W(100V), 61.6lm/W(200V), 62.2lm/W(240V)
LED module life: 40,000 hours
Light colour: Equivalent to 5,000K
Colour rendering index(Ra): 68

- Body:** Diecast aluminum
- Reflector:** Diecast aluminum
- Front cover:** Plastic (frosted)
- Arm with stand:** Steel plate (hot dip galvanizing)
- Finish colour:** Metallic grey
- Installation angle:** Any position (no limitation)
- Weight:** 16kg



E2022N/SA1/2.4



* The angle is 1/2 illuminance angle, not beam angle.

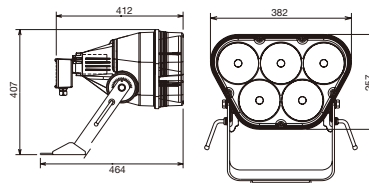
- IP65
- 100 to 240V
- Power supply unit built-in



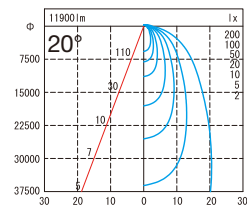
E2023N/SA1/2.4

Rated luminous flux (luminaire luminous flux): 11,900lm
Power consumption: 212W(100V), 203W(200V), 201W(240V)
Luminous efficacy: 56.1lm/W(100V), 58.6lm/W(200V), 59.2lm/W(240V)
LED module life: 40,000 hours
Light colour: Equivalent to 5,000K
Colour rendering index(Ra): 68

- Body:** Diecast aluminum
- Reflector:** Diecast aluminum
- Front cover:** Plastic (frosted)
- Arm with stand:** Steel plate (hot dip galvanizing)
- Finish colour:** Metallic grey
- Installation angle:** Any position (no limitation)
- Weight:** 16kg



E2023N/SA1/2.4



* The angle is 1/2 illuminance angle, not beam angle.

LED!DGC FLOODDNEED

LED OUTDOOR HIGH POWER FLOODLIGHT



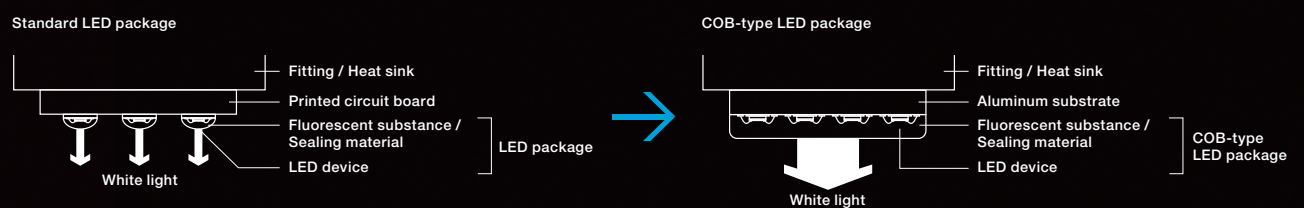
- Utilizes highly efficient/high-powered COB-type LED package
- Metal halide lamp capable of delivering brightness equivalent to 150W (5000K/Ra65 type)
- Proprietary light distribution control technology allows for two types of luminous intensity distribution: medium beam and wide beam
- Lineup consisting of two light colours: white daylight (5000K) and warm incandescent (3000K)
- Ra80 high colour rendering vividly illuminates objects
- The 5000K type also includes a highly efficient 92lm/W (Ra65) light in the lineup
- Any position structure allows for various mounting directions and installation angles
- Quickly reaches full brightness
- Long life 40,000 hours



Photo: Example of construction (Image)

Utilizes highly efficient/high-powered COB-type LED package

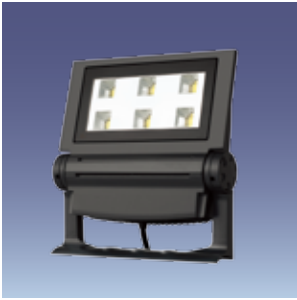
Through a new optical design utilizing both a lens + a mirror, and making highly efficient use of electric power, lighting with top-class energy-saving performance has been achieved. With COB-type (Chip on board) lighting, large numbers of LED devices are mounting directly to the substrate. Thus, because light is emitted from a single, uniform surface, an evenly bright, natural lighting environment close to that created by surface emission can be achieved.



IP65

220 to 240V

Power supply unit built-in



ECF0901M/650 ECF0901M/850 ECF0901M/830

Power consumption: 93W
LED module life: 40,000 hours

Body (except a front part): Diecast aluminum (polyester paint)

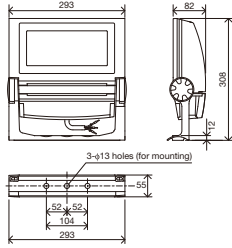
Front part: Plastic

Cable: Cabtyre cable (1,500mm outside luminaire)

Installation angle: Any position (no limitation)

Finish colour: Dark grey

Weight: 5.5kg



IP65

220 to 240V

Power supply unit built-in



ECF0901W/650 ECF0901W/850 ECF0901W/830

Power consumption: 93W
LED module life: 40,000 hours

Body (except a front part): Diecast aluminum (polyester paint)

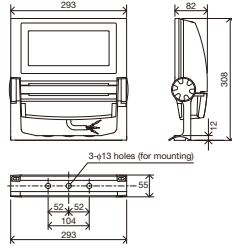
Front part: Plastic

Cable: Cabtyre cable (1,500mm outside luminaire)

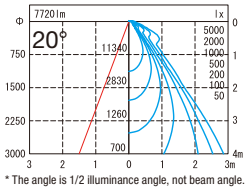
Installation angle: Any position (no limitation)

Finish colour: Dark grey

Weight: 5.5kg



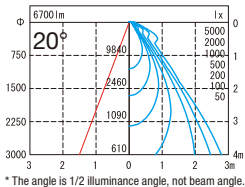
ECF0901M/650



Rated luminous flux (luminaire luminous flux): 7,720lm
Luminous efficacy: 83.0lm/W
Light colour: Equivalent to 5,000K
Colour rendering index(Ra): 65

* The angle is 1/2 illuminance angle, not beam angle.

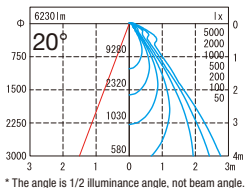
ECF0901M/850



Rated luminous flux (luminaire luminous flux): 6,700lm
Luminous efficacy: 72.0lm/W
Light colour: Equivalent to 5,000K
Colour rendering index(Ra): 80

* The angle is 1/2 illuminance angle, not beam angle.

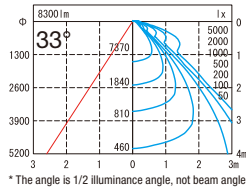
ECF0901M/830



Rated luminous flux (luminaire luminous flux): 6,230lm
Luminous efficacy: 67.0lm/W
Light colour: Equivalent to 3,000K
Colour rendering index(Ra): 80

* The angle is 1/2 illuminance angle, not beam angle.

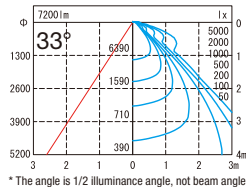
ECF0901W/650



Rated luminous flux (luminaire luminous flux): 8,300lm
Luminous efficacy: 89.2lm/W
Light colour: Equivalent to 5,000K
Colour rendering index(Ra): 65

* The angle is 1/2 illuminance angle, not beam angle.

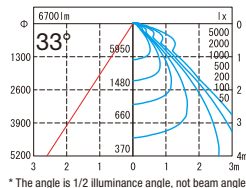
ECF0901W/850



Rated luminous flux (luminaire luminous flux): 7,200lm
Luminous efficacy: 77.4lm/W
Light colour: Equivalent to 5,000K
Colour rendering index(Ra): 80

* The angle is 1/2 illuminance angle, not beam angle.

ECF0901W/830



Rated luminous flux (luminaire luminous flux): 6,700lm
Luminous efficacy: 72.0lm/W
Light colour: Equivalent to 3,000K
Colour rendering index(Ra): 80

* The angle is 1/2 illuminance angle, not beam angle.



ACCESSORIES



Arm

600mm type

FA51/DG

900mm type

FA52/DG

Pipe: Steel pipe

Junction box:
Diecast aluminum

Finish colour:

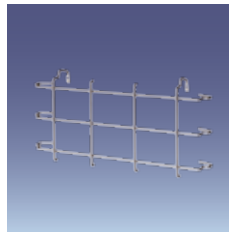
Dark grey

Weight:

2.1kg (600mm type),
2.4kg (900mm type)



Installation example



Guard

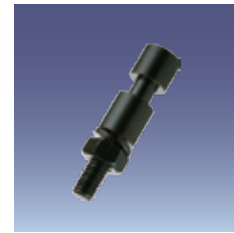
GECF971

Material: Stainless

Weight: 110g



Installation example



Bolt for mount bracket

Indoor use

FA-33/BK

Allowable weight:

20kg or less

Finish colour: Black

Weight: 95g



Flange

FA53/DG

Material:

Diecast aluminum

Finish colour:

Dark grey

Weight: 430g



Installation example



Mount bracket for trusses

Indoor use

FA-30/BK

Applicable pipe:

Round pipe with a diameter of $\phi 30$ to 45mm

Square pipe opening

□ 45mm

Allowable weight:

20kg or less

Finish colour: Black

Weight: 600g



Installation example



Safety wire

FA-32

Length: 660mm

Stainless wire: $\phi 1.6$ mm

Weight: 50g

LED OUTDOOR FLOODLIGHT

/RGB FLOODLIGHT



- Utilizes a highly efficient LED package
- Lens light distribution control allows for 4 types of luminous intensity distribution
- Light colour lineup includes monochromatic (4100K) and RGB colour types
- RGB types compatible with DMX512 system
- Any position structure allows for various mounting directions and installation angles
- Quickly reaches full brightness
- Long life 30,000 hours



Photo: Example of construction (image)

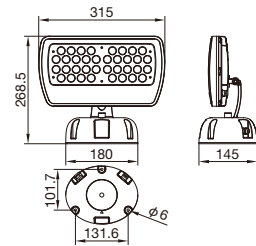
IP65 100 to 240V Power supply unit built-in



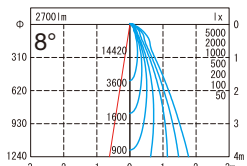
ECF0401NN/641
ECF0401NN/RGB

Power consumption: 45W
LED module life: 30,000 hours

Body: Diecast aluminum
Front part: Tempered glass
Finish colour: Grey
Weight: 3.1kg



ECF0401NN/641



Rated luminous flux (luminaire luminous flux): 2,700lm
Luminous efficacy: 60.0lm/W
Light colour: Equivalent to 4,100K
Colour rendering index(Ra): 65
Beam angle: 15°



* The angle is 1/2 illuminance angle, not beam angle.

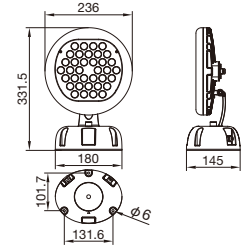
IP65 100 to 240V Power supply unit built-in



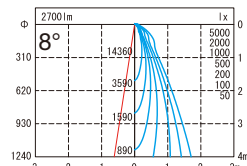
ECF0402NN/641
ECF0402NN/RGB

Power consumption: 45W
LED module life: 30,000 hours

Body: Diecast aluminum
Front part: Tempered glass
Finish colour: Grey
Weight: 3.4kg



ECF0402NN/641



Rated luminous flux (luminaire luminous flux): 2,700lm
Luminous efficacy: 60.0lm/W
Light colour: Equivalent to 4,100K
Colour rendering index(Ra): 65
Beam angle: 15°



* The angle is 1/2 illuminance angle, not beam angle.

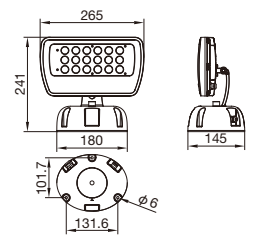
IP65 100 to 240V Power supply unit built-in



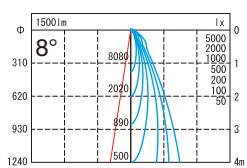
ECF0201NN/641
ECF0201NN/RGB

Power consumption: 20W
LED module life: 30,000 hours

Body: Diecast aluminum
Front part: Tempered glass
Finish colour: Grey
Weight: 2.7kg



ECF0201NN/641



Rated luminous flux (luminaire luminous flux): 1,500lm
Luminous efficacy: 75.0lm/W
Light colour: Equivalent to 4,100K
Colour rendering index(Ra): 65
Beam angle: 15°



* The angle is 1/2 illuminance angle, not beam angle.

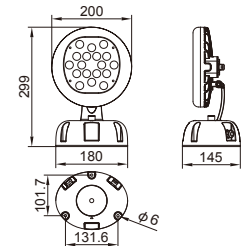
IP65 100 to 240V Power supply unit built-in



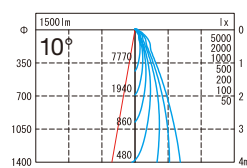
ECF0202NN/641
ECF0202NN/RGB

Power consumption: 20W
LED module life: 30,000 hours

Body: Diecast aluminum
Front part: Tempered glass
Finish colour: Grey
Weight: 3.1kg



ECF0202NN/641



Rated luminous flux (luminaire luminous flux): 1,500lm
Luminous efficacy: 75.0lm/W
Light colour: Equivalent to 4,100K
Colour rendering index(Ra): 65
Beam angle: 15°



* The angle is 1/2 illuminance angle, not beam angle.

* The beam angle lineup includes 30°, 45° and 60° types.

LED WALL WASHER LIGHT

RGB WALL WASHER LIGHT

- Utilizes a highly efficient LED package
- Lens light distribution control allows for 4 types of luminous intensity distribution
- Light colour lineup includes monochromatic (4100K) and RGB colour types
- RGB types compatible with DMX512 system
- Connected lighting possible
- Quickly reaches full brightness
- Long life 30,000 hours

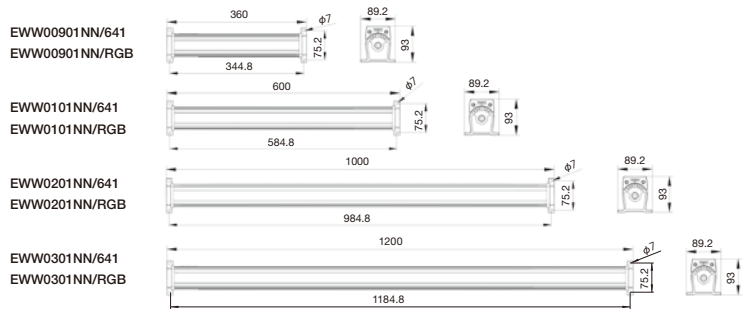
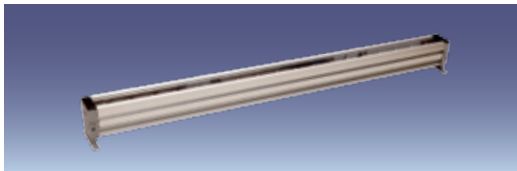


IP65

100 to 240V

Power supply unit built-in

narrow

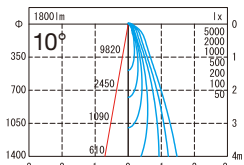


EW0301NN/641 EW0301NN/RGB

Power consumption: 30W
LED module life: 30,000 hours

Body: Diecast aluminum
Front part: Tempered glass
Finish colour: Grey
Weight: 5.3kg

EW0301NN/641



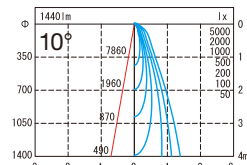
* The angle is 1/2 illuminance angle, not beam angle.
Rated luminous flux (luminaire luminous flux): 1,800lm
Luminous efficacy: 60.0lm/W
Light colour: Equivalent to 4,100K
Colour rendering index(Ra): 65
Beam angle: 15°

EW0201NN/641 EW0201NN/RGB

Power consumption: 24W
LED module life: 30,000 hours

Body: Diecast aluminum
Front part: Tempered glass
Finish colour: Grey
Weight: 4.9kg

EW0201NN/641



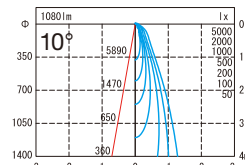
* The angle is 1/2 illuminance angle, not beam angle.
Rated luminous flux (luminaire luminous flux): 1,440lm
Luminous efficacy: 60.0lm/W
Light colour: Equivalent to 4,100K
Colour rendering index(Ra): 65
Beam angle: 15°

EW0101NN/641 EW0101NN/RGB

Power consumption: 18W
LED module life: 30,000 hours

Body: Diecast aluminum
Front part: Tempered glass
Finish colour: Grey
Weight: 4.5kg

EW0101NN/641



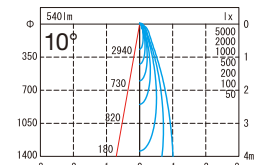
* The angle is 1/2 illuminance angle, not beam angle.
Rated luminous flux (luminaire luminous flux): 1,080lm
Luminous efficacy: 60.0lm/W
Light colour: Equivalent to 4,100K
Colour rendering index(Ra): 65
Beam angle: 15°

EW00901NN/641 EW00901NN/RGB

Power consumption: 9W
LED module life: 30,000 hours

Body: Diecast aluminum
Front part: Tempered glass
Finish colour: Grey
Weight: 4.1kg

EW00901NN/641



* The angle is 1/2 illuminance angle, not beam angle.
Rated luminous flux (luminaire luminous flux): 540lm
Luminous efficacy: 60.0lm/W
Light colour: Equivalent to 4,100K
Colour rendering index(Ra): 65
Beam angle: 15°

* The beam angle lineup includes 30°, 45° and 60° types.





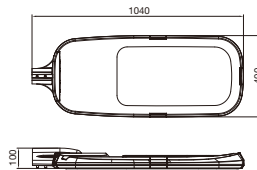
- Utilizes a highly efficient LED package
- Lineup consisting of highly efficient type with energy conservation characteristics, and regular type prioritizing low cost
- Lens light distribution control allows for IES type luminous intensity distribution capability
- Quickly reaches full brightness
- Long life 30,000 hours

LED STREET LIGHT

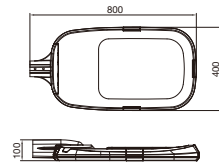
IP65

90 to 305V

Power supply unit built-in



EST1501/641
EST1801/641



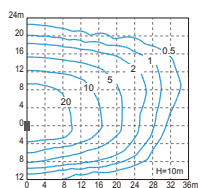
EST0901/641 | EST1201/641
EST0501/641 | EST0701/641

EST1501/641 EST1801/641

LED module life: 30,000 hours
Light colour: Equivalent to 4,100K
Colour rendering index(Ra): 65

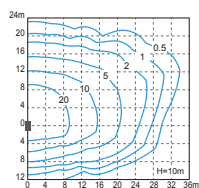
Body: Diecast aluminum
Front part: Tempered glass
Finish colour: Grey
Weight: 17kg

EST1501/641



Rated luminous flux (luminaire luminous flux): 15,500lm
Power consumption: 150W
Luminous efficacy: 103.3lm/W

EST1801/641



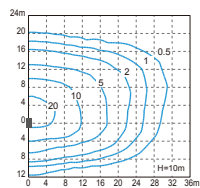
Rated luminous flux (luminaire luminous flux): 14,500lm
Power consumption: 180W
Luminous efficacy: 80.6lm/W

EST0901/641 | EST1201/641 EST0501/641 | EST0701/641

LED module life: 30,000 hours
Light colour: Equivalent to 4,100K
Colour rendering index(Ra): 65

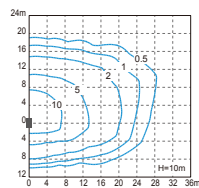
Body: Diecast aluminum
Front part: Tempered glass
Finish colour: Grey
Weight: 13.5kg

EST0901/641



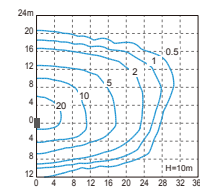
Rated luminous flux (luminaire luminous flux): 9,000lm
Power consumption: 90W
Luminous efficacy: 100.0lm/W

EST0501/641



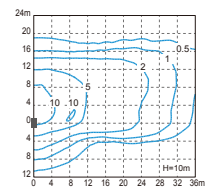
Rated luminous flux (luminaire luminous flux): 5,500lm
Power consumption: 55W
Luminous efficacy: 100.0lm/W

EST1201/641



Rated luminous flux (luminaire luminous flux): 9,000lm
Power consumption: 120W
Luminous efficacy: 75.0lm/W

EST0701/641



Rated luminous flux (luminaire luminous flux): 5,700lm
Power consumption: 75W
Luminous efficacy: 76.0lm/W

* Luminaire tilt angle: 15° * Luminous intensity distribution-type: TYPE II, Short * Unit: lx



LEDiOC LED LIGHT-BULB

LED LAMP



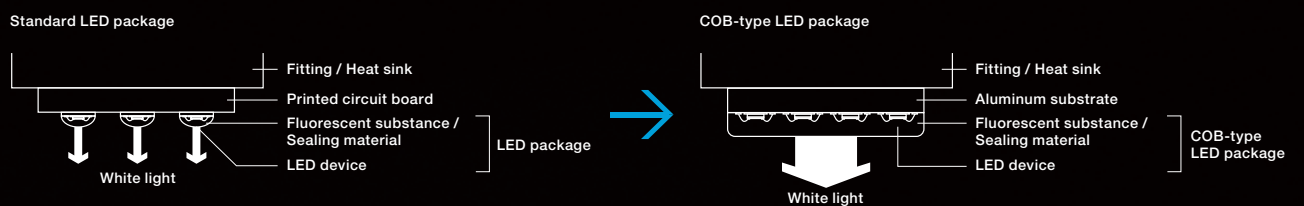
- Utilizes highly efficient/high-powered COB-type LED package
- Through the use of COB-type LED lighting with a wide luminescent surface, realize luminous intensity distribution around the entire periphery while suppressing glare
- Lineup consisting of two light colours: white daylight (5000K) and warm incandescent (3000K)
- Ra85 (3000K) and Ra70 (5000K) high colour rendering vividly illuminates objects
- The 30W 5000K type is a highly efficient 133lm/W
- Quickly reaches full brightness
- Long LED module life of 40,000 hours



Through the use of 30W 3000K and 5000K LED LIGHT BULB, a magical nighttime landscape has been created by illuminating the remains of historical structures in a section of the city.

Utilizes highly efficient/high-powered COB-type LED package

Through a new optical design utilizing both a lens + a mirror, and making highly efficient use of electric power, lighting with top-class energy-saving performance has been achieved. With COB-type (Chip on board) lighting, large numbers of LED devices are mounting directly to the substrate. Thus, because light is emitted from a single, uniform surface, an evenly bright, natural lighting environment close to that created by surface emission can be achieved.



E27
base

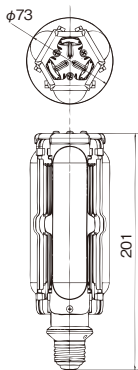
Power supply unit
not included



LDTS30N-G

Rated luminous flux: 4,000lm
Power consumption: 30W
Luminous efficacy: 133.3lm/W
Rated life: 40,000 hours
Light colour: Equivalent to 5,000K
Colour rendering index(Ra): 70

.....
Body: Diecast aluminum
Globe: Polycarbonate
Finish colour: White
Ambient operating temperature range: -20°C to +40°C
Weight: 290g



E27
base

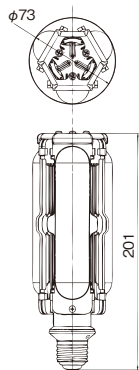
Power supply unit
not included



LDTS30L-G

Rated luminous flux: 2,800lm
Power consumption: 30W
Luminous efficacy: 93.3lm/W
Rated life: 40,000 hours
Light colour: Equivalent to 3,000K
Colour rendering index(Ra): 85

.....
Body: Diecast aluminum
Globe: Polycarbonate
Finish colour: White
Ambient operating temperature range: -20°C to +40°C
Weight: 290g



E40
base

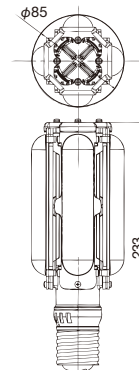
Power supply unit
not included



LDTS72N-G

Rated luminous flux: 8,000lm
Power consumption: 72W
Luminous efficacy: 111.1lm/W
Rated life: 40,000 hours
Light colour: Equivalent to 5,000K
Colour rendering index(Ra): 70

.....
Body: Diecast aluminum
Globe: Polycarbonate
Finish colour: White
Ambient operating temperature range: -20°C to +40°C
Weight: 460g



E40
base

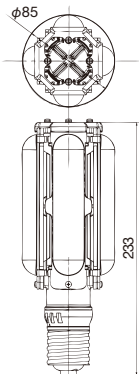
Power supply unit
not included



LDTS72L-G

Rated luminous flux: 5,600lm
 Power consumption: 72W
 Luminous efficacy: 77.8lm/W
 Rated life: 40,000 hours
 Light colour: Equivalent to 3,000K
 Colour rendering index(Ra): 85

Body: Diecast aluminum
 Globe: Polycarbonate
 Finish colour: White
 Ambient operating temperature range: -20°C to +40°C
 Weight: 460g



E27
base

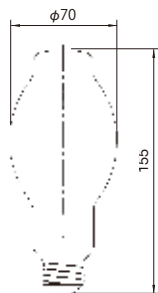
Power supply unit
not included



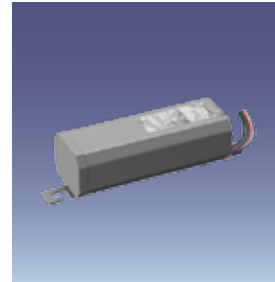
LDS12N-G/G

Rated luminous flux: 1,200lm
 Power consumption: 12W
 Luminous efficacy: 100.0lm/W
 Rated life: 40,000 hours
 Light colour: Equivalent to 5,000K
 Colour rendering index(Ra): 85

Body: Glass
 Ambient operating temperature range: -20°C to +40°C
 Weight: 105g



POWER SUPPLY UNIT



100 to
240V

50/60Hz

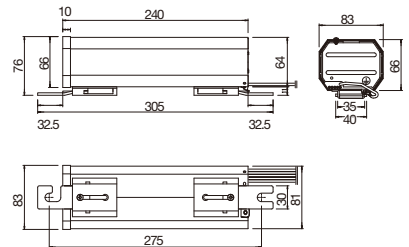
For LDTS30N-G, LDTS30L-G

LE040025HS1/2.4-A2

For LDTS72N-G, LDTS72L-G

LE072044HS1/2.4-A2

Body: Steel plate
 Lead wire: 0.8m
 Applicable pole: Insertable pole ϕ 130.8mm (4B) or larger
 Ambient operating temperature range: -20°C to +40°C
 Weight: 2.5kg



LED-MR16/PAR

LED LAMP



- Utilizes highly efficient/high-powered COB-type LED package
- COB-type LED1 package allows for beautiful lighting that eliminates multiple shadows
- Rich lineup including MR16/GU10/PAR20/PAR30/PAR38
- Dimming capable
- Ra80 high colour rendering vividly illuminates objects
- Long life 40,000 hours



Photo: Example of construction (image)

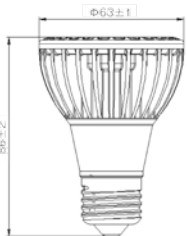
- E26 base
- 120V
- Power supply unit built-in



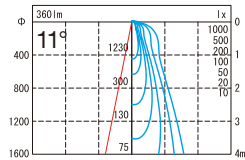
LDR7L/PAR20/MD/U
LDR7L/PAR20/WD/U

Rated luminous flux: 360lm
 Power consumption: 7W
 Luminous efficacy: 51.4lm/W
 Rated life: 40,000 hours
 Light colour: Equivalent to 3,000K
 Colour rendering index(Ra): 80
 Beam angle
 LDR7L/PAR20/MD/U: 25°
 LDR7L/PAR20/WD/U: 40°

Finish colour: Grey
 Weight: 130g



LDR7L/PAR20/MD/U



* The angle is 1/2 illuminance angle, not beam angle.



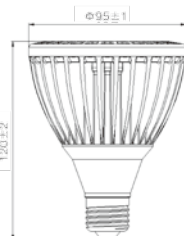
- E26 base
- 120V
- Power supply unit built-in



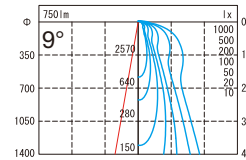
LDR15L/PAR30/MD/U
LDR15L/PAR30/WD/U

Rated luminous flux: 750lm
 Power consumption: 15W
 Luminous efficacy: 50.0lm/W
 Rated life: 40,000 hours
 Light colour: Equivalent to 3,000K
 Colour rendering index(Ra): 80
 Beam angle
 LDR15L/PAR30/MD/U: 25°
 LDR15L/PAR30/WD/U: 40°

Finish colour: Grey
 Weight: 360g



LDR15L/PAR30/MD/U



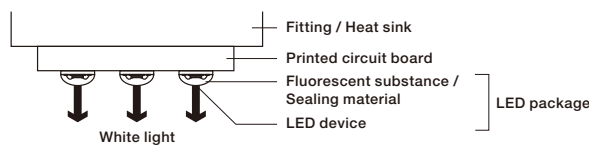
* The angle is 1/2 illuminance angle, not beam angle.



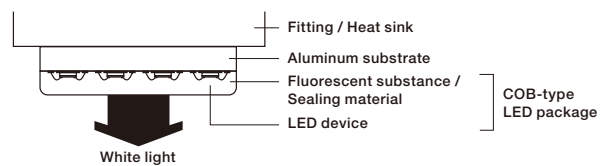
Utilizes highly efficient/high-powered COB-type LED package

Through a new optical design utilizing both a lens + a mirror, and making highly efficient use of electric power, lighting with top-class energy-saving performance has been achieved. With COB-type (Chip on board) lighting, large numbers of LED devices are mounting directly to the substrate. Thus, because light is emitted from a single, uniform surface, an evenly bright, natural lighting environment close to that created by surface emission can be achieved.

Standard LED package



COB-type LED package



E26
base

120V

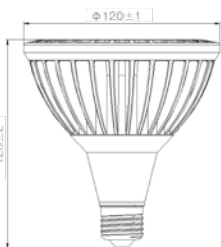
Power supply
unit built-in



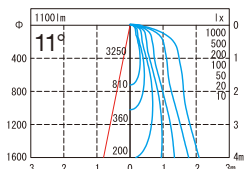
LDR20L/PAR38/MD/U LDR20L/PAR38/WD/U

Rated luminous flux: 1,100lm
Power consumption: 20W
Luminous efficacy: 55.0lm/W
Rated life: 40,000 hours
Light colour: Equivalent to 3,000K
Colour rendering index(Ra): 80
Beam angle
LDR20L/PAR38/MD/U: 25°
LDR20L/PAR38/WD/U: 40°

Finish colour: Grey
Weight: 500g



LDR20L/PAR38/MD/U



* The angle is 1/2 illuminance angle, not beam angle.



GU5.3
base

12V

Power supply
unit built-in

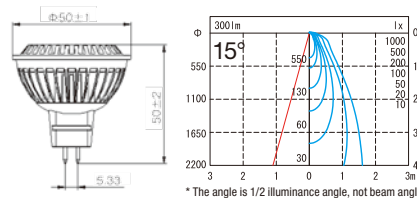


LDR6L/MR16/MD/U LDR6L/MR16/WD/U

Rated luminous flux: 300lm
Power consumption: 6W
Luminous efficacy: 50.0lm/W
Rated life: 40,000 hours
Light colour: Equivalent to 3,000K
Colour rendering index(Ra): 80
Beam angle
LDR6L/MR16/MD/U: 24°
LDR6L/MR16/WD/U: 38°

Finish colour: Grey
Weight: 550g

LDR6L/MR16/WD/U



* The angle is 1/2 illuminance angle, not beam angle.

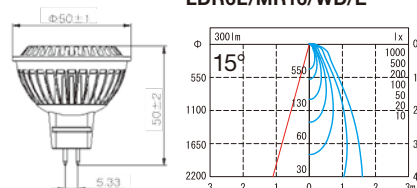


LDR6L/MR16/MD/E LDR6L/MR16/WD/E

Rated luminous flux: 300lm
Power consumption: 6W
Luminous efficacy: 50.0lm/W
Rated life: 25,000 hours
Light colour: Equivalent to 3,000K
Colour rendering index(Ra): 80
Beam angle
LDR6L/MR16/MD/E: 24°
LDR6L/MR16/WD/E: 38°

Finish colour: Grey
Weight: 550g

LDR6L/MR16/WD/E



* The angle is 1/2 illuminance angle, not beam angle.



GU10
base

Power supply
unit built-in

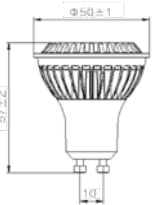


LDR6L/GU10/MD/U
LDR6L/GU10/WD/U

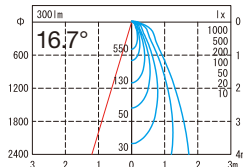
120V

Rated luminous flux: 300lm
 Power consumption: 6W
 Luminous efficacy: 50.0lm/W
 Rated life: 40,000 hours
 Light colour: Equivalent to 3,000K
 Colour rendering index(Ra): 80
 Beam angle
 LDR6L/GU10/MD/U: 24°
 LDR6L/GU10/WD/U: 38°

Finish colour: Grey
 Weight: 740g



LDR6L/GU10/WD/U



* The angle is 1/2 illuminance angle, not beam angle.

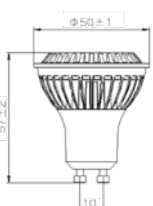


LDR6L/GU10/MD/E
LDR6L/GU10/WD/E

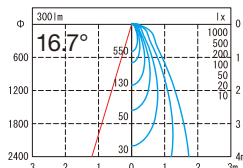
220-
240V

Rated luminous flux: 300lm
 Power consumption: 6W
 Luminous efficacy: 50.0lm/W
 Rated life: 25,000 hours
 Light colour: Equivalent to 3,000K
 Colour rendering index(Ra): 80
 Beam angle
 LDR6L/GU10/MD/E: 24°
 LDR6L/GU10/WD/E: 38°

Finish colour: Grey
 Weight: 740g



LDR6L/GU10/WD/E



* The angle is 1/2 illuminance angle, not beam angle.



Website



Iwasaki Electric Website

Through the Internet, Iwasaki is engaged in interactive communication with its customers. Our Website contains a wealth of information beneficial to customers including information related to our latest products and technologies, examples of installed systems, event information, and a company overview. We also offer quick responses to all email inquiries.

<http://www.eye.co.jp>

Overseas sales offices Website



Australia
EYE Lighting Australia Pty Ltd.
www.eyelighting.com.au



Hong Kong
EYE Lighting (Hong Kong) Ltd.
www.eyelighting.com.hk



Shanghai, China
Shanghai Iwasaki Electric Co., Ltd.
www.iwasaki.net.cn



Singapore
EYE Lighting Asia Pacific Pte Ltd.
www.eyelighting.com.sg



UK
EYE Lighting Europe Ltd.
www.eyelighting.co.uk



USA
EYE Lighting International of North America, Inc.
www.eyelighting.com

Showroom



Tokyo Showroom

i Labo

Bakurocho-daiichi Building, 1-4-16, Nihonbashi-bakurocho,
Chuo-ku, Tokyo 103-0002, Japan
Tel: +81-3-5847-8639 Fax: +81-3-5847-8652

See, touch, Tokyo feel.

Iwasaki's lighting showroom is the ideal space for personally experiencing and familiarizing yourself with our latest products and technologies.

Showroom map



IWASAKI ELECTRIC CO., LTD.

Bakurocho-daiichi Building, 1-4-16, Nihonbashi-bakurocho,
Chuo-ku, Tokyo 103-0002, Japan
Tel: +81-3-5847-8630 Fax: +81-3-5847-8647
www.eye.co.jp



GLOBAL NETWORK

OVERSEAS SALES OFFICES

Australia:

EYE Lighting Australia Pty Ltd.
15 Industrial Avenue
Wacol QLD 4076, Australia
PO Box 306, Carole Park QLD 4300, Australia
Tel: +61-7-3335-3588
Fax: +61-7-3335-3533
E-mail: info@eli.com.au
www.eyelighting.com.au

Hong Kong:

EYE Lighting (Hong Kong) Ltd.
Room 609, Silvercord Tower 2
30 Canton Road, Tst, Kowloon
Hong Kong
Tel: +852-2368-8782
Fax: +852-2481-2661
E-mail: contact@eyelighting.com.hk
www.eyelighting.com.hk

New Zealand:

EYE Lighting New Zealand Ltd.
18 Levene Place, Mt. Wellington,
Auckland, New Zealand
Tel: +64-9-276-8099
Fax: +64-9-276-3474

Shanghai, China:

Shanghai Iwasaki Electric Co., Ltd.
Room 2512 Bldg. "B" Far International Plaza
No.317 Xianxia Road, Shanghai, 200051 China
Tel: +86-21-6235-1352 / 6235-1623
Fax: +86-21-6235-1353
E-mail: sales2@shiwasaki.com.cn
www.iwasaki.net.cn

Singapore:

EYE Lighting Asia Pacific Pte Ltd.
21, Kaki Bukit Place, Eunos Techpark
Singapore 416199
Tel: +65-6742-3611
Fax: +65-6743-5202
E-mail: support@eyelighting.com.sg
www.eyelighting.com.sg

UK:

EYE Lighting Europe Ltd.
Unit 2, Eskdale Road, Uxbridge
Middlesex UB8 2RT, UK
Tel: +44-1895-814418
Fax: +44-1895-814666
E-mail: sales@eyelighting.co.uk
www.eyelighting.co.uk

USA:

EYE Lighting International
of North America, Inc.
9150 Hendricks Road,
Mentor, OH 44060-2146, USA
Tel: +1-440-350-7000
Fax: +1-440-350-7001
E-mail: sales@eyelighting.com
www.eyelighting.com

