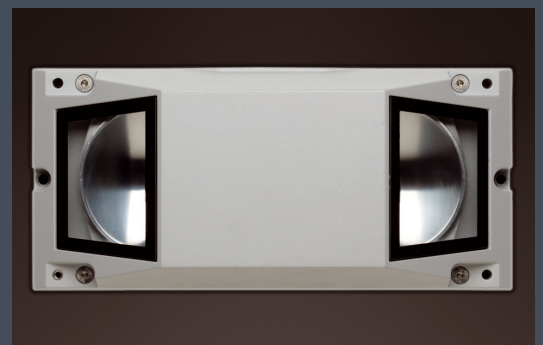
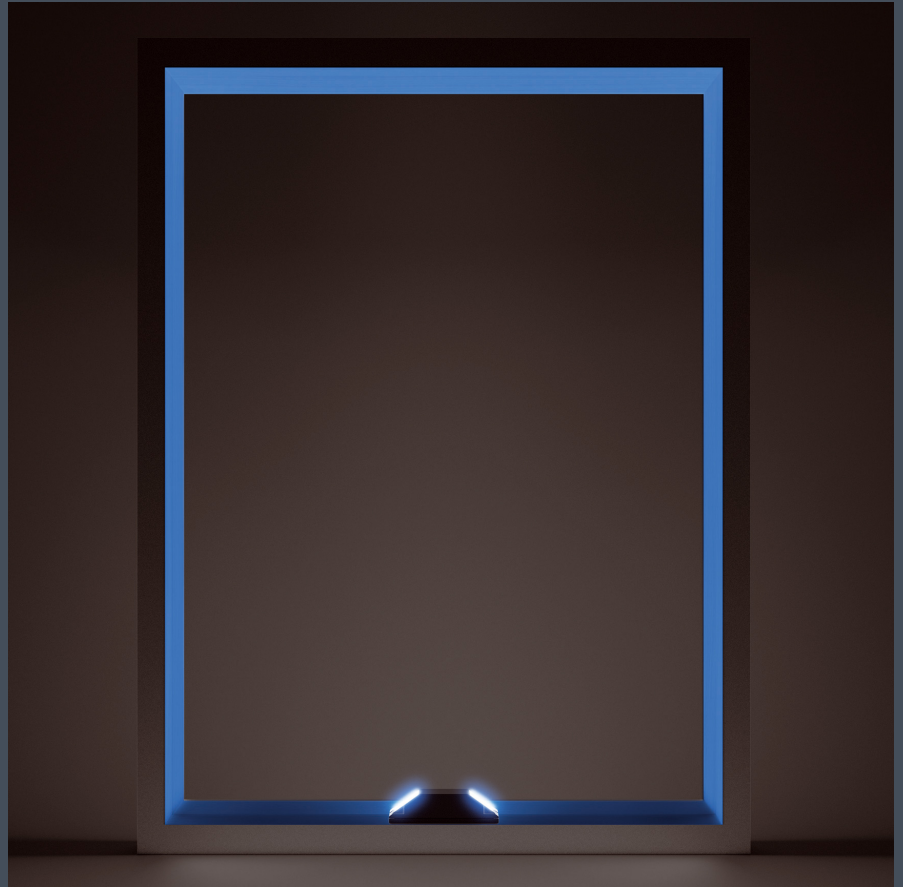


Arclight is a luminaire for the accent lighting of window reveals. The light from 2 LEDs is directed from the opposite sides of the luminaire, via specially developed reflectors, onto the window reveal. The result is a uniform arc of light. A complete window reveal can be illuminated using just one luminaire.

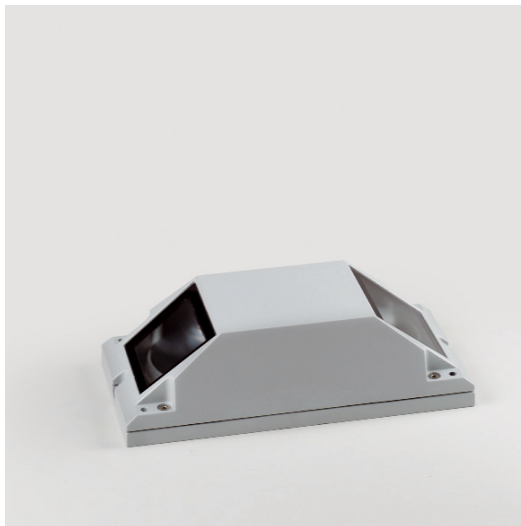
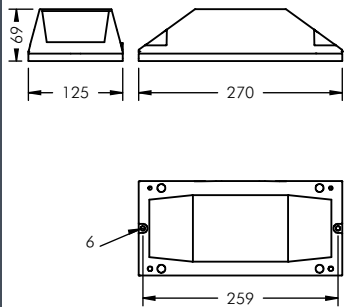


Using 2 LEDs the highly efficient optical system creates an arc of light inside window reveals.

Interesting lighting effects can be created on a façade with very little energy consumption. Also available in single colour LED.



Highlighting window reveals accentuates the structure of the façade.



**Arclight**

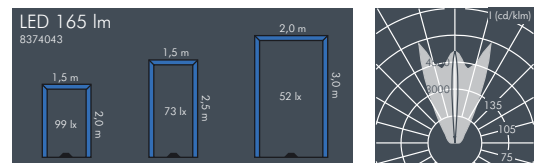
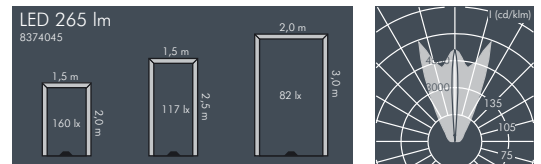
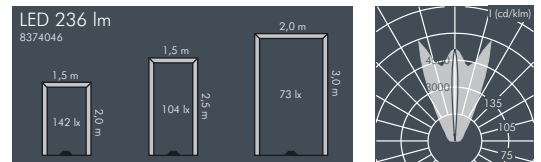
With 2 x 3 W high performance LEDs, protection class I, IP65 , IK08 light directed by a high-end optical system, die cast aluminium housing, polyester powder coated, all exterior steel parts are stainless steel, tempered high transmission safety glass, silicon gasket, 2 drilled holes Ø 6 mm, spacing 259 mm, 2 x M20 cable glands, 4 x M6 grub screws to offset inclined surfaces, integral converter

Arclight					
Part number	Colour	Light source	Weight	Main beam angle !	
<b>8 374 046 009</b>	black	2 x LED 3 W warm white	1.6 kg	C 0 – 180	C 90 – 270
<b>8 374 066 009</b>	white			10°	180°
<b>8 374 056 009</b>	silver grey				

Part number	Colour	Light source	Weight	Main beam angle !	
<b>8 374 045 009</b>	black	2 x LED 3 W neutral white	1.6 kg	C 0 – 180	C 90 – 270
<b>8 374 065 009</b>	white			10°	180°
<b>8 374 055 009</b>	silver grey				

Part number*	Colour	Light source	Weight	Main beam angle !	
<b>8 374 043 009</b>	black	2 x LED 3 W blue	1.6 kg	C 0 – 180	C 90 – 270
<b>8 374 063 009</b>	white			10°	180°
<b>8 374 053 009</b>	silver grey				

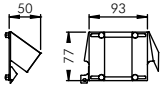
\*The luminaire can also be supplied with monochrome LEDs (amber, red, green) upon request.



**Light source**

LEDs, replacement modules available





### Accessories for Arlight

Part number	Colour	Description
<b>123 0 367 940</b>	black	<b>Glare shield</b>
<b>123 0 367 960</b>	white	
<b>123 0 367 950</b>	silver grey	



The glare shield can be used to cut off part of the light output on narrow window reveals.