

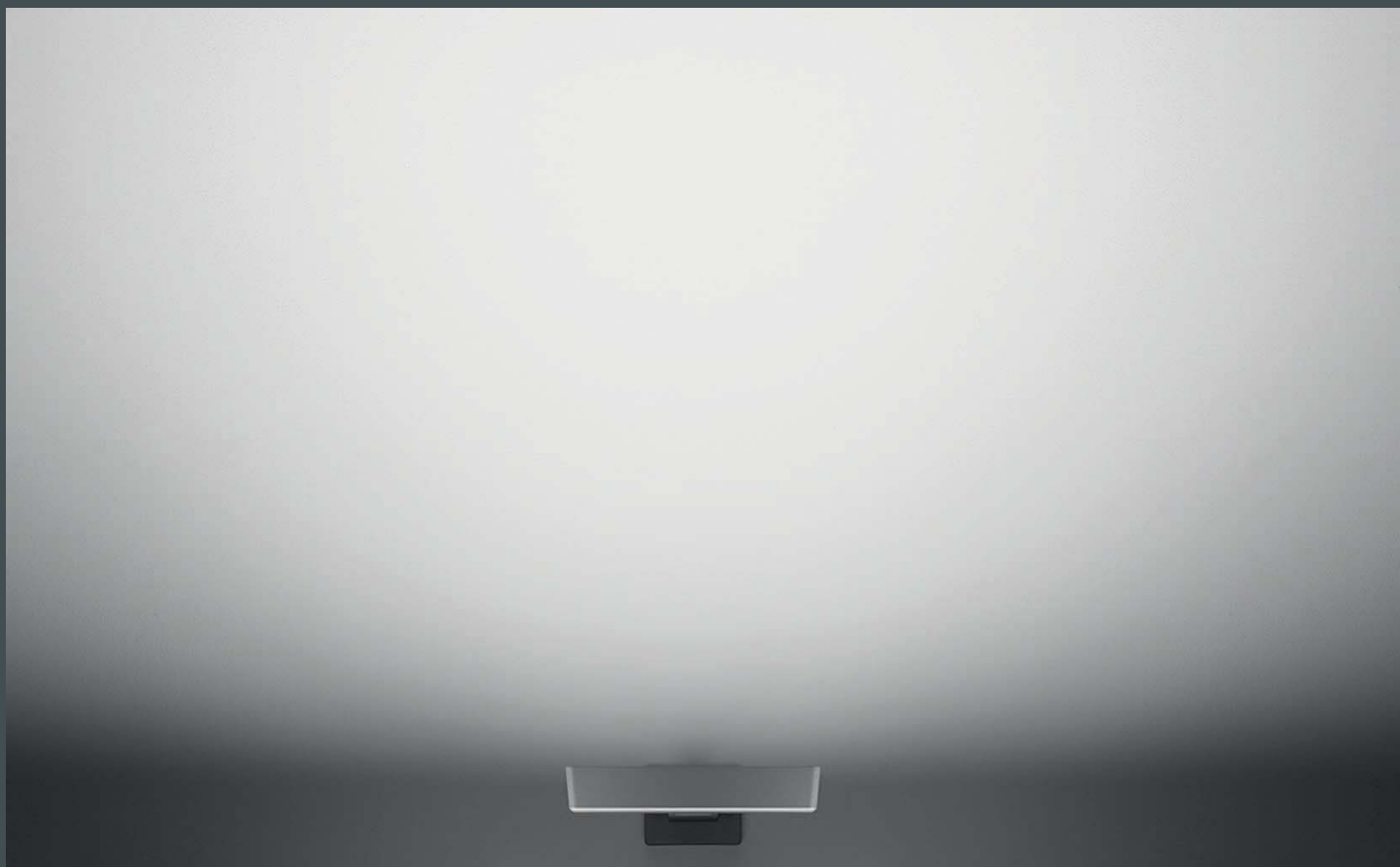


The Expolux range of luminaires illuminates signs or advertising surfaces to a high level of uniformity. The light emitted by an LED module is directed asymmetrically by a special lens onto the surface. High levels of illumination are achieved with very low power consumption. Innovative LED technology is put to good use.

The low profile housing is very compact and only needs to be tilted very little thanks to the asymmetrical distribution lens. Together with the short arm, the overall impression is a very discreet luminaire. But one which can make any sign or advertising surface stand out.



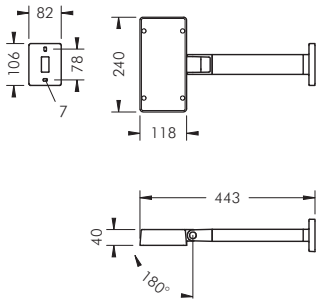
Advertising surfaces of various dimensions can be illuminated uniformly and economically. The luminaires themselves blend discreetly into the background.



An advertising panel measuring 2 x 2 metres can be illuminated using just one sign luminaire. Luminaires with wall washer optics are suitable for façade lighting applications.

There are two different optical systems adapted for sign or façade lighting applications.



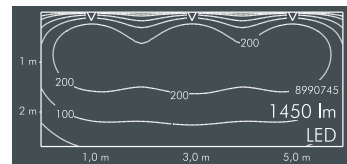
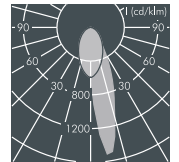
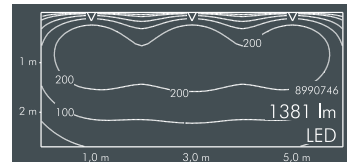


### Expolux Sign luminaire

With a high performance LED module, thermal monitoring device protection class I, IP65 ⚡⚡⚡ windage area AW 0.04 m<sup>2</sup> die cast aluminium housing, polyester powder coated, baton lens made of high efficiency optical silicon, all exterior steel parts are stainless steel, UV stabilised polycarbonate cover, silicon gasket, closure with 4 stainless steel screws, wall mounting plate: 2 drilled holes Ø 7 mm, spacing 78 mm, joint with tilt range 180°, cable entry: M20, integral driver (AC/DC)

#### Expolux, sign luminaire

Part number	Colour	Light source	Weight	Half beam angle γ	
				C 0 – 180	C 90 – 270
<b>8 990 746 009</b>	black	1 x LED module 18 W warm white (3000 K)	2.1 kg	15°	41°
<b>8 990 766 009</b>	white				
<b>8 990 756 009</b>	silver grey				
Part number	Colour	Light source	Weight	Half beam angle γ	
				C 0 – 180	C 90 – 270
<b>8 990 745 009</b>	black	1 x LED module 18 W neutral white (4000 K)	2.1 kg	15°	41°
<b>8 990 765 009</b>	white				
<b>8 990 755 009</b>	silver grey				






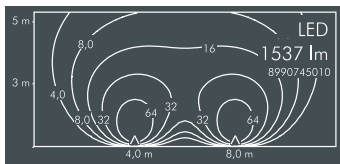
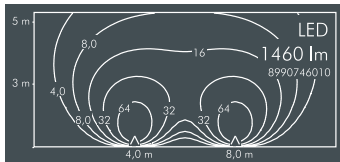
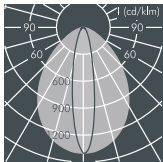
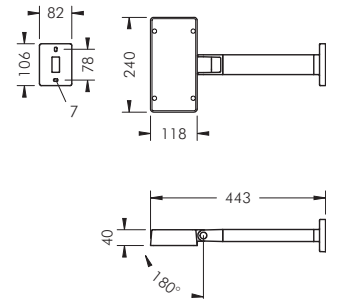
LED (see page 334)

LEDs, replacement modules available



**Expolux  
Wall washer**

With a high performance LED module, thermal monitoring device protection class I, IP65    windage area AW 0.04 m<sup>2</sup> die cast aluminium housing, polyester powder coated, baton lens made of high efficiency optical silicon, all exterior steel parts are stainless steel, UV stabilised polycarbonate cover, silicon gasket, closure with 4 stainless steel screws, wall mounting plate: 2 drilled holes Ø 7 mm, spacing 78 mm, joint with tilt range 180°, cable entry: M20, integral driver (AC/DC)



**Expolux, wall washer**

Part number	Colour	Light source	Weight	Half beam angle $\gamma$	
				C 0 – 180	C 90 – 270
<b>8 990 746 019</b>	black	1 x LED module 18 W warm white (3000 K)	2.1 kg	20°	83°
<b>8 990 766 019</b>	white				
<b>8 990 756 019</b>	silver grey				

Part number	Colour	Light source	Weight	Half beam angle $\gamma$	
				C 0 – 180	C 90 – 270
<b>8 990 745 019</b>	black	1 x LED module 18 W neutral white (4000 K)	2.1 kg	20°	83°
<b>8 990 765 019</b>	white				
<b>8 990 755 019</b>	silver grey				

LED (see page 334)

LEDs, replacement modules available

