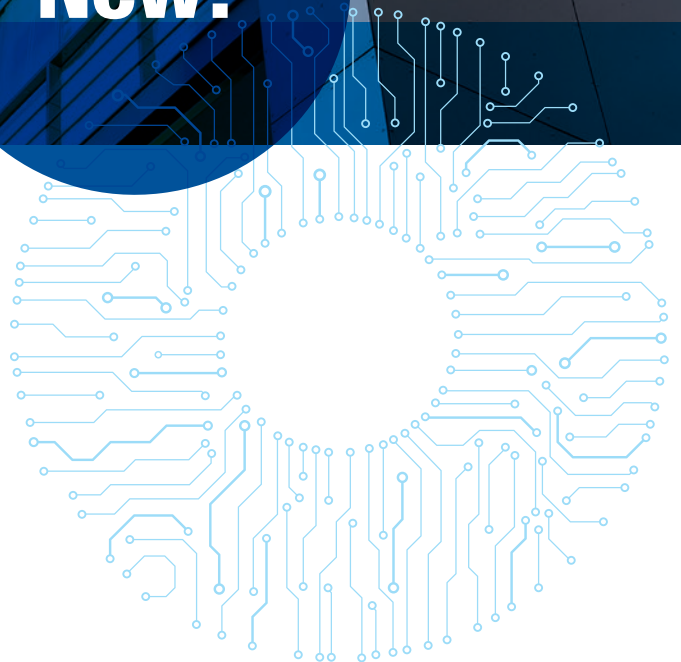


CAPTAIN

Smart



New!



CAPTAIN



CAPTAIN is a new luminaire, born out of an eco-design policy, that offers innovative functions for lighting in hallways and circulation areas. So much more than just a standard bulkhead fitting, **CAPTAIN**'s elegant design, environmental characteristics, make it your perfect partner for managing your lighting installations in an efficient, environmentally-friendly way.

Eco-designed:

Manufactured from recycled and recyclable plastics and factory-repairable, the Captain luminaire is reusable in an overall maintenance circuit and forms part of a circular economy policy aimed at extending useful life.

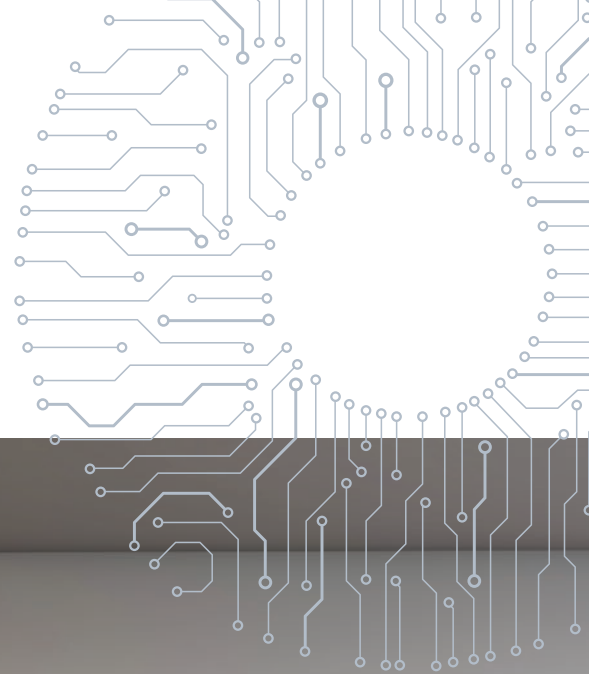
It is fitted with a high-performance, repairable LED system, with up to 2750 lm output and very low consumption of 130 lm/W, and lumen maintenance more than 72,000 hours in L80B10.

One-click installation:

Thanks to its plug-in mount, fixing and electrical connection can be performed during building work with no fear of damaging the luminaire itself. The luminaire can then be locked onto its mount with a single click at the end of the project, saving precious time in both installation and maintenance.

Innovative, elegant appearance with no visible screws!





And because everyone is concerned for the environment, its light unit can be dismantled and repaired, without needing to replace the luminaire as a whole. This extends its useful life and allows technical evolution.



Its recycled polycarbonate mount is part of a circular economy policy, and its reinforced construction offering IK10 impact resistance, protected by an invisible secure closure, make this a very durable luminaire.



Its LED module, its detector, and its communication system are designed, developed, and manufactured in France and carry the Origine France Garantie label — the only quality mark that truly guarantees local manufacturing and that our suppliers and subcontractors too are in France.

CAPTAIN




Features:

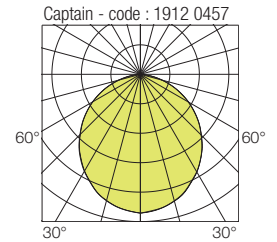
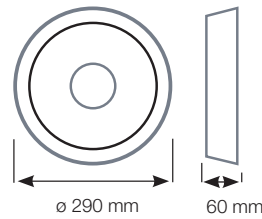
- Low-consumption architectural luminaire
- Mount, base, bezel made from recycled polycarbonate
- High-performance polycarbonate diffuser
- Captive, non-visible stainless steel vandal-resistant fixings
- Design: PM Design
- Standby consumption:
Captain consumes less than 0.5 W in standby
- Lumen maintenance: L80B10 / over 72,000 hours



Option available on request:

- LED 3000 K

 Vandal-resistant tool (bit) to be ordered separately
code: 9800 0003



220-240 V AC / 50/60 Hz



CAPTAIN on / off version

Designation	Power (W)	Luminaire light output (lm)	Luminaire efficacy (lm/W)	Code ○ RAL9003
Captain 2000	11	1550	141	1901 0400
Captain 2600	15	1950	130	1902 0400
Captain 3600	21	2750	131	1903 0400

Code* ● RAL7035	Code* ● RAL9005
1901 1400	1901 2400
1902 1400	1902 2400
1903 1400	1903 2400

CAPTAIN DALI version

Designation	Power (W)	Luminaire light output (lm)	Luminaire efficacy (lm/W)	Code ○ RAL9003
Captain 2000	12	1550	129	1901 0420
Captain 2600	15	1950	130	1902 0420
Captain 3600	21	2750	131	1903 0420

Code* ● RAL7035	Code* ● RAL9005
1901 1420	1901 2420
1902 1420	1902 2420
1903 1420	1903 2420

*RAL7035 and RAL9005 for power, light output, and efficacy information, please refer to data sheet.



FEATURES TABLE

	On/Off luminaire	DALI luminaire
Variante		
On-off	✓	✓
Extinction warning		✓ ¹
Motion detection		
Twilight switching		
DALI		✓ ¹
Switch-Dim		
Daisy-chaining		✓ ¹
Remote-control mode for simple settings via smartphone /tablet applications		
Advanced settings, data consultation, simplified installation, via smartphone and tablet applications		
Fault-reporting and remote programming		

¹ Only possible via DALI control

SÉCURLITE
Z.I. des Ajeux
72400 La Ferté-Bernard, France
Tel.: +33 (0)2 43 60 40 00
Fax: +33 (0)2 43 60 40 09
E-mail: contact@securlite.com
www.securlite.com

Technical and dimensional data are given for information only and may be modified at any time without notice. Please enquire before ordering.
Our sales Terms & Conditions and guarantee conditions are available from www.securlite.com/cgv or on request to our Sales Department.



Printed on PEFC paper.
A mark guaranteeing a sustainably-managed forest.
(Program for the Endorsement of Forest Certification)
Photo credits: Sécurlite - Studio Image (Belgium) - AdobeStock

CAT0621-2 ter - EN - March 2022