

NEKO / **MODULINE** Linear System  
48V Low Voltage Modular Linear System



Linear Accent Light  
ML35-AL300

Linear General Light  
ML35-GL300

Pendant Spotlight  
ML35-PS72

Round Spotlight  
ML35-RS55

Round Spotlight  
ML35-RS55

Pendant Spotlight  
ML35-PS55

Pendant Spotlight  
ML35-PS72

Pendant-Decoration  
ML35-PD

Pendant Spotlight  
ML35-PS55

Round Spotlight  
ML35-RS35

Round Spotlight  
ML35-RS35

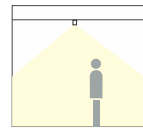
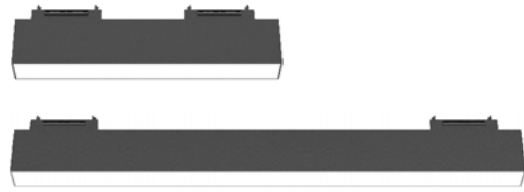
Linear Accent Light  
ML35-AL600

Linear General Light  
ML35-GL600

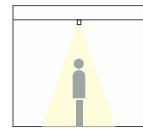
**NEKO / MODULINE Linear System**  
48V Low Voltage Modular Linear System



Linear General Light  
ML35-GL300/ ML35-GL600



Linear Accent Light  
ML35-AL300/ ML35-AL600



Pendant-Decoration  
ML35-PD



Pendant Spotlight  
ML35-PS72



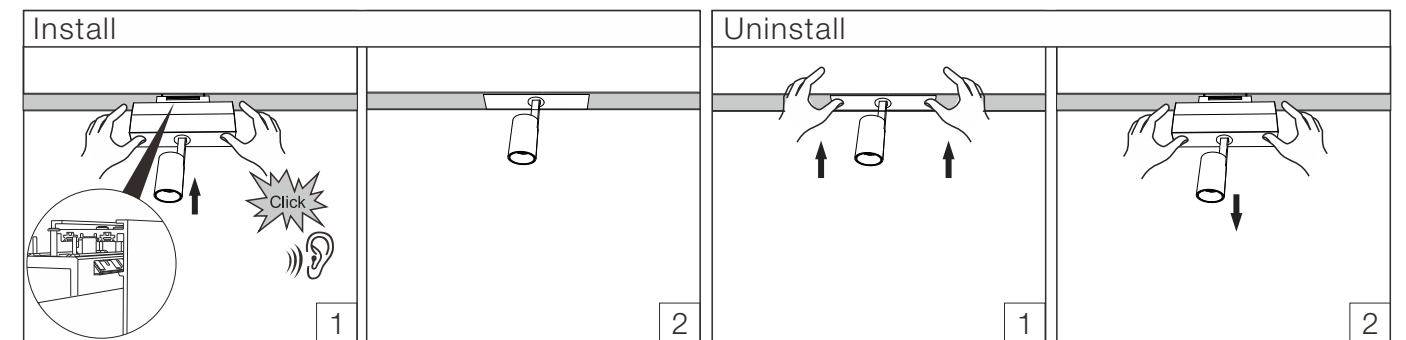
Pendant Spotlight  
ML35-PS55



Round Spotlight  
ML35-RS35



Round Spotlight  
ML35-RS55



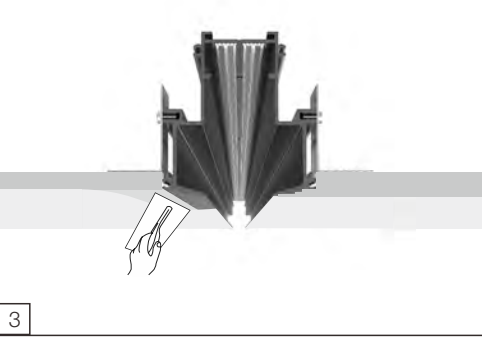
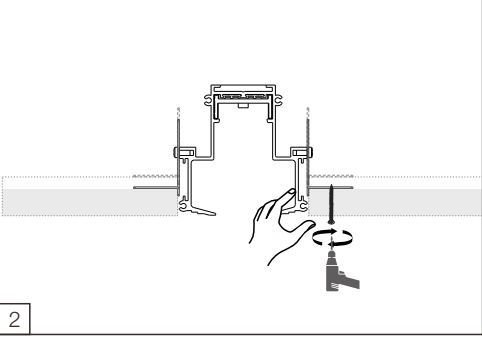
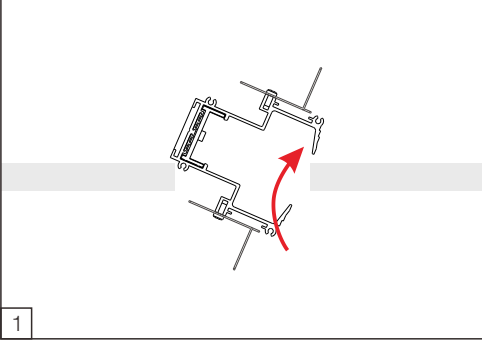
Trimless Recessed

Surface Mounted

Pendant



Trimless Recessed Installations



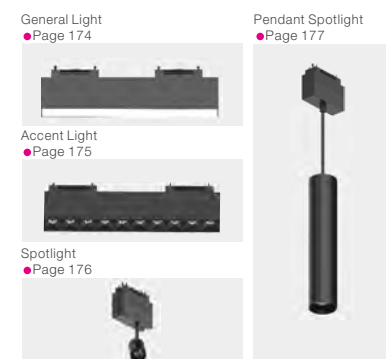
**NEKO / MODULINE Linear System**  
48V Low Voltage Modular Linear System  
Trimless System



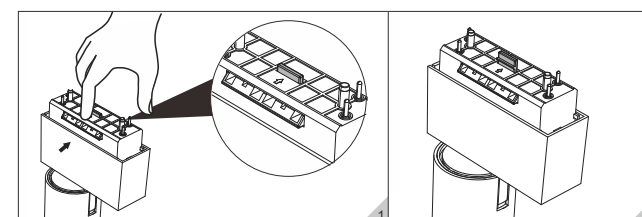
**Short Info**

- 48V low voltage system
- Track Rail made of extruded aluminium with 36mm width groove
- Suitable for trimless installation in ceilings with 1-40mm thickness
- Track Rail available with standard lengths 3000mm and 1000mm
- 'L' shape corner module available for flexible system
- Linear Connector and Continuous Kit provided for continuous Track Rail connection
- Various lighting insets with multiple lighting applications, Tool-free insert mounting by clip-in mechanism
- Insets available with Non Dim and 1-10V Dim

**Insets**



**Features**



•Insets with clip-in mechanism

**Short Info**

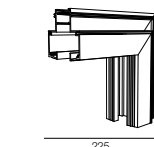
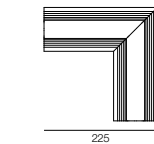
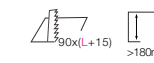
MODULINE trimless recessed system

**Electrical**

Non Dim  
1-10V Dim

**Fixture Colour**

Black



**MODULINE trimless recessed system**

Please order installation track rail, light insets and mounting accessories separately.

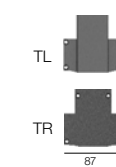
**Trimless Installation Track Rail**

L (mm)	Description	Code/ Model
1000	Track Rail	ML35-TR1000
3000	Track Rail	ML35-TR3000
200*200	'L' shape corner module-horizontal	ML35-CM-R
200*200	'L' shape corner module-vertical	ML35-CM-RV

•Track Rail including endcaps.

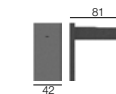
**Accessories**

**Endcap**



Description	Code/ Model
At the side with Power Feeder Unit	ML35-Endcap-TL
At the side without Power Feeder Unit	ML35-Endcap-TR

**Power Feeder Unit**



Description	Code/ Model
Power Feeder Unit with feeder cables 500mm	ML35-Endcap E-R

**Track Rail Wires Cover**



Description	Code/ Model
Track Rail Wires Cover 925mm	ML35-RC1000
Track Rail Wires Cover 2925mm	ML35-RC3000

•Wires cover can be shortened as desired.

**Connector Set**



Description	Code/ Model
Linear Connector with screws	ML35-LC
Continuous Kit, Electrical	ML35-CK

•Need to be used together as a set.

**Trimless Installation Kit**



Description	Code/ Model
Trimless installation kit, 2pcs/ set. 1 set for per meter Track Rail length.	ML35-TIK

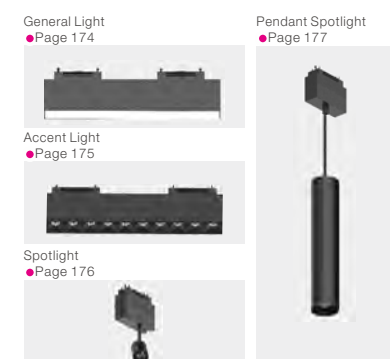
**NEKO / MODULINE Linear System**  
48V Low Voltage Modular Linear System  
Surface Mounted System



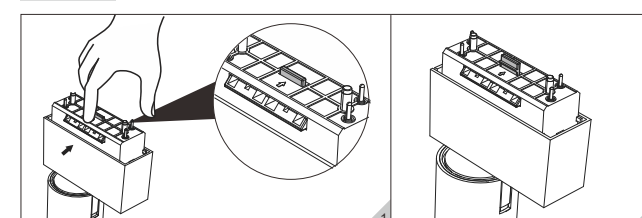
**Short Info**

- 48V low voltage system
- Track Rail made of extruded aluminium with 36mm width groove
- Suitable for surface mounted or suspended with 1500mm steel cable
- Track Rail available with standard lengths 3000mm and 1000mm
- 'L' shape corner module available for flexible system
- Linear Connector and Continuous Kit provided for continuous Track Rail connection
- Various lighting insets with multiple lighting applications, Tool-free insert mounting by clip-in mechanism
- Insets available with Non Dim and 1-10V Dim

**Insets**



**Features**



-Insets with clip-in mechanism

**Short Info**

MODULINE surface mounted system

**Electrical**

- Non Dim
- 1-10V Dim

**Fixture Colour**

Black



**MODULINE surface mounted system**

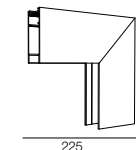
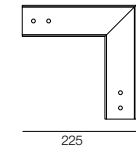
Please order installation track rail, light insets and mounting accessories separately.



**Surface mounted Installation Track Rail**

L (mm)	Description	Code/ Model
1000	Track Rail	ML35-R1000
3000	Track Rail	ML35-R3000
200*200	'L' shape corner module-horizontal	ML35-CM-S
200*200	'L' shape corner module-vertical	ML35-CM-SV

\*Track Rail including endcaps.



**Accessories**

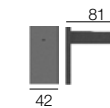
**Endcap**

Description	Code/ Model
At the side without Power Feeder Unit	ML35-Endcap



**Power Feeder Unit**

Description	Code/ Model
Power Feeder Unit with feeder cables 500mm for surface mounted	ML35-Endcap E-R
Power Feeder Unit with feeder cables 2000mm for suspended	ML35-Endcap E-P



**Track Rail Wires Cover**

Description	Code/ Model
Track Rail Wires Cover 925mm	ML35-RC1000
Track Rail Wires Cover 2925mm	ML35-RC3000

\*Wires cover can be shortened as desired.



**Connector Set**

Description	Code/ Model
Linear Connector with screws	ML35-LC
Continuous Kit, Electrical	ML35-CK

\*Need to be used together as a set.



**Installation Kit**

Description	Code/ Model
Surface mounted installation kit 1000mm/pcs	ML35-SMK



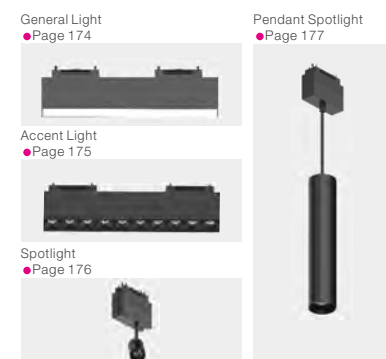
**NEKO / MODULINE Linear System**  
48V Low Voltage Modular Linear System  
Suspended System



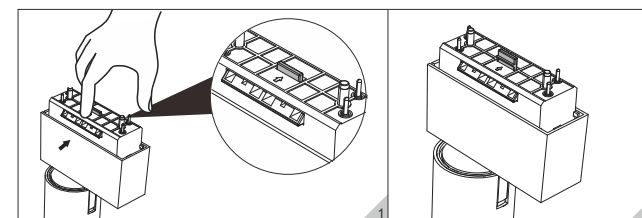
**Short Info**

- 48V low voltage system
- Track Rail made of extruded aluminium with 36mm width groove
- Suitable for surface mounted or suspended with 1500mm steel cable
- Track Rail available with standard lengths 3000mm and 1000mm
- 'L' shape corner module available for flexible system
- Linear Connector and Continuous Kit provided for continuous Track Rail connection
- Various lighting insets with multiple lighting applications, Tool-free insert mounting by clip-in mechanism
- Insets available with Non Dim and 1-10V Dim

**Insets**



**Features**



•Insets with clip-in mechanism

**Short Info**

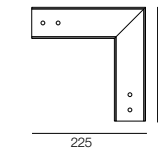
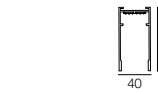
MODULINE suspended system

**Electrical**

Non Dim  
1-10V Dim

**Fixture Colour**

Black



**MODULINE suspended system**

Please order installation track rail, light insets and mounting accessories separately.

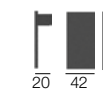
**Suspended Installation Track Rail**

L (mm)	Description	Code/ Model
1000	Track Rail	ML35-R1000
3000	Track Rail	ML35-R3000
200*200	'L' shape corner module	ML35-CM-S

•Track Rail including endcaps.

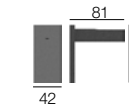
**Accessories**

**Endcap**



Description	Code/ Model
At the side without Power Feeder Unit	ML35-Endcap

**Power Feeder Unit**



Description	Code/ Model
Power Feeder Unit with feeder cables 500mm for surface mounted	ML35-Endcap E-R
Power Feeder Unit with feeder cables 2000mm for suspended	ML35-Endcap E-P

**Track Rail Wires Cover**



Description	Code/ Model
Track Rail Wires Cover 925mm	ML35-RC1000
Track Rail Wires Cover 2925mm	ML35-RC3000

•Wires cover can be shortened as desired.

**Connector Set**



Description	Code/ Model
Linear Connector with screws	ML35-LC
Continuous Kit, Electrical	ML35-CK

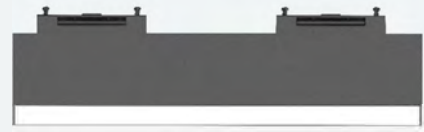
•Need to be used together as a set.

**Installation Kit**

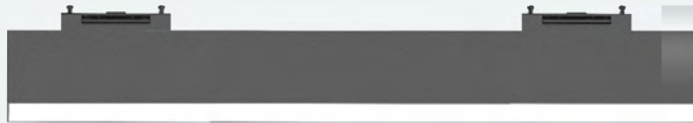


Description	Code/ Model
Suspension installation kit with 1500mm steel cable 2pcs/ set	ML35-PK

**NEKO / MODULINE Linear System**  
**48V Low Voltage Modular Linear System**  
**General Light Insets**



ML35-GL300



ML35-GL600

13W CRI90 2700K 3000K 4000K  
 26W CRI80 50,000h@L80B10  
 IP20  
 CB CE

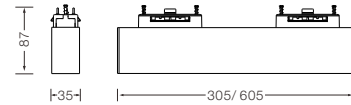


Image	LED Power	System Power	LED Voltage	CRI	CCT	Beam	LED Output	System Output	Code
	12 W	13 W	48 V	80	2700K	110°	1600lm	1100lm	MLGB-827A113F-BN
					3000K	110°	1700lm	1200lm	MLGB-830A113F-BN
					4000K	110°	1800lm	1300lm	MLGB-840A113F-BN
	90	2700K	110°	1400lm	950lm	MLGB-927A113F-BN			
		3000K	110°	1500lm	1000lm	MLGB-930A113F-BN			
		4000K	110°	1600lm	1100lm	MLGB-940A113F-BN			
<b>Code Remark:</b> ON-OFF Version									
	12 W	13 W	48 V	80	2700K	110°	1600lm	1100lm	MLGA-827A113A-BN
					3000K	110°	1700lm	1200lm	MLGA-830A113A-BN
					4000K	110°	1800lm	1300lm	MLGA-840A113A-BN
	90	2700K	110°	1400lm	950lm	MLGA-927A113A-BN			
		3000K	110°	1500lm	1000lm	MLGA-930A113A-BN			
		4000K	110°	1600lm	1100lm	MLGA-940A113A-BN			
<b>Code Remark:</b> 1-10V Dim Version									
	24 W	26 W	48 V	80	2700K	110°	3200lm	2200lm	MLGD-827A126F-BN
					3000K	110°	3400lm	2400lm	MLGD-830A126F-BN
					4000K	110°	3600lm	2600lm	MLGD-840A126F-BN
	90	2700K	110°	2800lm	1900lm	MLGD-927A126F-BN			
		3000K	110°	3000lm	2000lm	MLGD-930A126F-BN			
		4000K	110°	3200lm	2200lm	MLGD-940A126F-BN			
<b>Code Remark:</b> ON-OFF Version									
	24 W	26 W	48 V	80	2700K	110°	3200lm	2200lm	MLGC-827A126A-BN
					3000K	110°	3400lm	2400lm	MLGC-830A126A-BN
					4000K	110°	3600lm	2600lm	MLGC-840A126A-BN
	90	2700K	110°	2800lm	1900lm	MLGC-927A126A-BN			
		3000K	110°	3000lm	2000lm	MLGC-930A126A-BN			
		4000K	110°	3200lm	2200lm	MLGC-940A126A-BN			
<b>Code Remark:</b> 1-10V Dim Version									

**NEKO / MODULINE Linear System**  
**48V Low Voltage Modular Linear System**  
**Accent Light Insets**



ML35-AL300



ML35-AL600

15W CRI90 2700K 3000K 4000K  
 29W CRI80 50,000h@L80B10  
 UGR < 19 IP20  
 CB CE

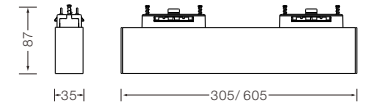


Image	LED Power	System Power	LED Voltage	CRI	CCT	Beam	LED Output	System Output	Code
	14 W	15 W	48 V	80	2700K	40°	1700lm	1200lm	MLAB-8274015F-BB
					3000K	40°	1800lm	1300lm	MLAB-8304015F-BB
					4000K	40°	1900lm	1400lm	MLAB-8404015F-BB
	90	2700K	40°	1400lm	950lm	MLAB-9274015F-BB			
		3000K	40°	1500lm	1000lm	MLAB-9304015F-BB			
		4000K	40°	1600lm	1100lm	MLAB-9404015F-BB			
<b>Code Remark:</b> ON-OFF Version									
	14 W	15 W	48 V	80	2700K	40°	1700lm	1200lm	MLAA-8274015A-BB
					3000K	40°	1800lm	1300lm	MLAA-8304015A-BB
					4000K	40°	1900lm	1400lm	MLAA-8404015A-BB
	90	2700K	40°	1400lm	950lm	MLAA-9274015A-BB			
		3000K	40°	1500lm	1000lm	MLAA-9304015A-BB			
		4000K	40°	1600lm	1100lm	MLAA-9404015A-BB			
<b>Code Remark:</b> 1-10V Dim Version									
	27 W	29 W	48 V	80	2700K	40°	3400lm	2400lm	MLAD-8274029F-BB
					3000K	40°	3600lm	2600lm	MLAD-8304029F-BB
					4000K	40°	3800lm	2800lm	MLAD-8404029F-BB
	90	2700K	40°	2800lm	1900lm	MLAD-9274029F-BB			
		3000K	40°	3000lm	2000lm	MLAD-9304029F-BB			
		4000K	40°	3200lm	2200lm	MLAD-9404029F-BB			
<b>Code Remark:</b> ON-OFF Version									
	27 W	29 W	48 V	80	2700K	40°	3400lm	2400lm	MLAC-8274029A-BB
					3000K	40°	3600lm	2600lm	MLAC-8304029A-BB
					4000K	40°	3800lm	2800lm	MLAC-8404029A-BB
	90	2700K	40°	2800lm	1900lm	MLAC-9274029A-BB			
		3000K	40°	3000lm	2000lm	MLAC-9304029A-BB			
		4000K	40°	3200lm	2200lm	MLAC-9404029A-BB			
<b>Code Remark:</b> 1-10V Dim Version									

**NEKO / MODULINE Linear System**  
48V Low Voltage Modular Linear System  
Spotlight Insets



4.5W CRI90 2700K  
14W CRI80 3000K  
4000K

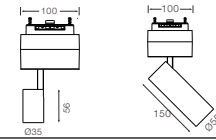
CREE 50,000h@L80B10  
CITIZEN 50,000h@L80B10

UGR < 19

IP20

5 YEAR GUARANTEE

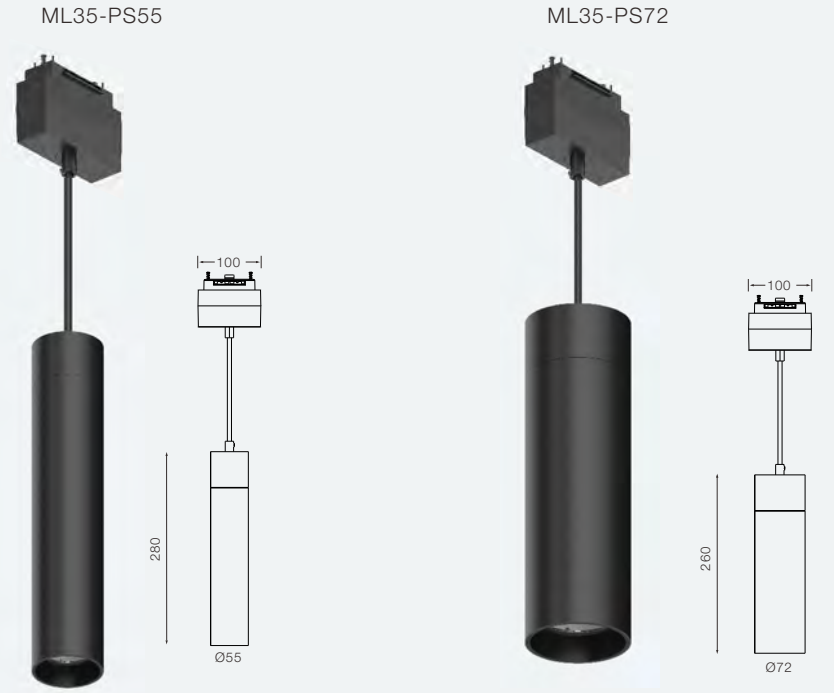
CB CE



LED Power	System Power	LED Voltage	CRI	CCT	Beam	LED Output	System Output	Code						
4 W	4.5 W	48 V	90	2700K	20°	450lm	330lm	MLRB-9272005F-BB						
					35°	450lm	330lm	MLRB-9273505F-BB						
					3000K	20°	500lm	350lm	MLRB-9302005F-BB					
						35°	500lm	350lm	MLRB-9303505F-BB					
					4000K	20°	550lm	380lm	MLRB-9402005F-BB					
						35°	550lm	380lm	MLRB-9403505F-BB					
					Code Remark: ON-OFF Version									
					4 W	4.5 W	48 V	90	2700K	20°	450lm	330lm	MLRA-9272005A-BB	
										35°	450lm	330lm	MLRA-9273505A-BB	
										3000K	20°	500lm	350lm	MLRA-9302005A-BB
											35°	500lm	350lm	MLRA-9303505A-BB
										4000K	20°	550lm	380lm	MLRA-9402005A-BB
35°	550lm	380lm	MLRA-9403505A-BB											
Code Remark: 1-10V Dim Version														
13W	14 W	48 V	90	2700K						18°	1600lm	900lm	MLRD-9271814F-BB	
										24°	1600lm	900lm	MLRD-9272414F-BB	
										36°	1600lm	900lm	MLRD-9273614F-BB	
										3000K	18°	1700lm	950lm	MLRD-9301814F-BB
											24°	1700lm	950lm	MLRD-9302414F-BB
					4000K	36°	1700lm	950lm	MLRD-9303614F-BB					
						18°	1800lm	1050lm	MLRD-9401814F-BB					
					24°	1800lm	1050lm	MLRD-9402414F-BB						
					36°	1800lm	1050lm	MLRD-9403614F-BB						
					Code Remark: ON-OFF Version									
					13W	14 W	48 V	90	2700K	18°	1600lm	900lm	MLRC-9271814A-BB	
										24°	1600lm	900lm	MLRC-9272414A-BB	
36°	1600lm	900lm	MLRC-9273614A-BB											
3000K	18°	1700lm	950lm	MLRC-9301814A-BB										
	24°	1700lm	950lm	MLRC-9302414A-BB										
4000K	36°	1700lm	950lm	MLRC-9303614A-BB										
	18°	1800lm	1050lm	MLRC-9401814A-BB										
24°	1800lm	1050lm	MLRC-9402414A-BB											
36°	1800lm	1050lm	MLRC-9403614A-BB											
Code Remark: 1-10V Dim Version														



**NEKO / MODULINE Linear System**  
48V Low Voltage Modular Linear System  
Pendant Spotlight Insets



13W CRI90 2700K  
19W CRI80 3000K  
4000K

CITIZEN 50,000h@L80B10

UGR < 19

IP20

5 YEAR GUARANTEE

CB CE

LED Power	System Power	LED Voltage	CRI	CCT	Beam	LED Output	System Output	Code					
12.5W	13 W	48 V	90	2700K	18°	1200lm	950lm	MLPB-9271813F-BB					
					24°	1200lm	950lm	MLPB-9272413F-BB					
					36°	1200lm	950lm	MLPB-9273613F-BB					
					3000K	18°	1300lm	1000lm	MLPB-9301813F-BB				
						24°	1300lm	1000lm	MLPB-9302413F-BB				
					4000K	36°	1300lm	1000lm	MLPB-9303613F-BB				
						18°	1400lm	1100lm	MLPB-9401813F-BB				
					24°	1400lm	1100lm	MLPB-9402413F-BB					
					36°	1400lm	1100lm	MLPB-9403613F-BB					
					Code Remark: ON-OFF Version								
					12.5W	13 W	48 V	90	2700K	18°	1200lm	950lm	MLPA-9271813A-BB
										24°	1200lm	950lm	MLPA-9272413A-BB
36°	1200lm	950lm	MLPA-9273613A-BB										
3000K	18°	1300lm	1000lm	MLPA-9301813A-BB									
	24°	1300lm	1000lm	MLPA-9302413A-BB									
4000K	36°	1300lm	1000lm	MLPA-9303613A-BB									
	18°	1400lm	1100lm	MLPA-9401813A-BB									
24°	1400lm	1100lm	MLPA-9402413A-BB										
36°	1400lm	1100lm	MLPA-9403613A-BB										
Code Remark: 1-10V Dim Version													
18W	19 W	48 V	90	2700K						15°	1900lm	1500lm	MLPD-9271519F-BB
										25°	1900lm	1500lm	MLPD-9272519F-BB
					30°	1900lm	1500lm	MLPD-9273019F-BB					
					3000K	15°	2000lm	1600lm	MLPD-9301519F-BB				
						25°	2000lm	1600lm	MLPD-9302519F-BB				
					4000K	30°	2000lm	1600lm	MLPD-9303019F-BB				
						15°	2100lm	1700lm	MLPD-9401519F-BB				
					25°	2100lm	1700lm	MLPD-9402519F-BB					
					30°	2100lm	1700lm	MLPD-9403019F-BB					
					Code Remark: ON-OFF Version								
					18W	19 W	48 V	90	2700K	15°	1900lm	1500lm	MLPC-9271519A-BB
										25°	1900lm	1500lm	MLPC-9272519A-BB
30°	1900lm	1500lm	MLPC-9273019A-BB										
3000K	15°	2000lm	1600lm	MLPC-9301519A-BB									
	25°	2000lm	1600lm	MLPC-9302519A-BB									
4000K	30°	2000lm	1600lm	MLPC-9303019A-BB									
	15°	2100lm	1700lm	MLPC-9401519A-BB									
25°	2100lm	1700lm	MLPC-9402519A-BB										
30°	2100lm	1700lm	MLPC-9403019A-BB										
Code Remark: 1-10V Dim Version													



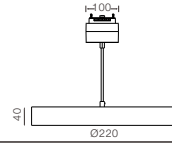


**NEKO / MODULINE Linear System**  
**48V Low Voltage Modular Linear System**  
 Pendant Decoration Insets **Coming Soon in June of 2019**



ML35-PD

15W CRI90 2700K 3000K 4000K CRI80 100° SAMSUNG 50,000h@L80B10 IP20 5 YEAR WARRANTY CB CE



ML35-PD

LED Power	System Power	LED Voltage	CRI	CCT	Beam	LED Output	System Output	Code
14 W	15 W	48 V	80	2700K	100°	1700lm	1200lm	MLDB-827A015F-BN
				3000K	100°	1800lm	1300lm	MLDB-830A015F-BN
				4000K	100°	1900lm	1400lm	MLDB-840A015F-BN
			90	2700K	100°	1500lm	1050lm	MLDB-927A015F-BN
				3000K	100°	1600lm	1100lm	MLDB-930A015F-BN
				4000K	100°	1700lm	1200lm	MLDB-940A015F-BN
Code Remark: ON-OFF Version								
14 W	15 W	48 V	80	2700K	100°	1700lm	1200lm	MLDB-827A015A-BN
				3000K	100°	1800lm	1300lm	MLDA-830A015A-BN
				4000K	100°	1900lm	1400lm	MLDA-840A015A-BN
			90	2700K	100°	1500lm	1050lm	MLDA-927A015A-BN
				3000K	100°	1600lm	1100lm	MLDA-930A015A-BN
				4000K	100°	1700lm	1200lm	MLDA-940A015A-BN
Code Remark: 1-10V Dim Version								

