



IMAGE PROJECTION

This series offers multiple solutions to the most demanding application requirements in the global market of display projection. Company logos, promotional campaigns, graphic designs or decorative patterns can be easily projected, with a bright and accurate rendition, onto surfaces of almost any kind in the most diverse permanent outdoor and indoor locations.

Packed with groundbreaking LED technology, a broad choice of assorted light output capabilities and beam angle apertures, besides multiple effects and patterns, these image projectors offer maximum versatility, flexibility and dynamism to the most creative light planning integration.

GRIVEND 



GOBOLED 500

IMAGE PROJECTION

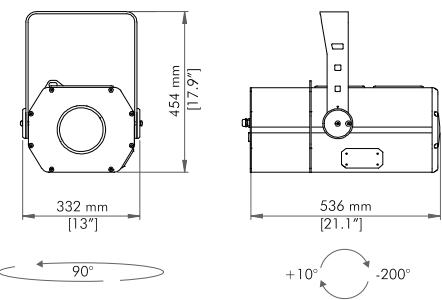
Packed with multiple effects, patterns and a motorized zoom, **GOBOLED 500** offers broad creative design integration for permanent exterior installations. Fitted with one high power LED, this cutting edge image projector delivers a bright and accurate rendition of graphic designs, logos and animations in outdoor and indoor locations.



GOBOLED 500

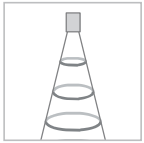
GRIVEND 

GOBOLED 500



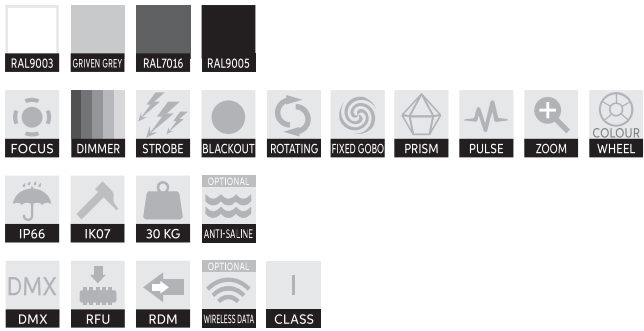
BEAM ANGLE REFERENCE

ZOOM 7°÷37°



PHOTOMETRIC DETAILS AVAILABLE ON OUR WEBSITE

FEATURES AND OPTIONS



ACCESSORIES



AL0250
SAFETY CABLE

GRIVEN

CODES

AL5170 GOBOLED 500

FINISH

- W White RAL 9003
- G GRIVEN Grey
- A Anthracite RAL 7016
- B Black RAL 9005

TECHNICAL SPECIFICATIONS

GOBOLED 500 is an IP66 image projector, whose aluminium body, fitted with an adjustable mounting yoke, hosts 1 high brightness 6500K power LED. Dimensions: 332 mm x 536 mm x 454 mm. Available in DMX, automatic and Master-Slave mode, it also features linear 0-100% dimmer, RFU (Remote firmware update), and RDM (Remote device management) functions. Additional features: 14 DMX channels; strobe function (27.7 FPS max); electronic blackout; motorized focus; 7°-37° motorized zoom; 7 interchangeable rotating gobos wheel (ø 27/22 mm); 16 bit indexing; 4 fixed gobos plus animation effect wheel; 8 colours + white wheel; 2 prisms with variable rotation (8 facets and 3D effect); pulse effect. Power supply: standard 100÷277V / 50-60Hz. Power consumption: 1A @ 230V / 450W. An Electrical Class I appliance, it features integrated electronic thermal protection management. Operating temperature: -30°C to 50°C (-22°F to 122°F).

DIGITAL CONTROL SYSTEM SPECIFICATIONS AND CONFIGURATIONS AVAILABLE ON OUR WEBSITE



CHECHEN REPUBLIC, RUSSIA_The Pride of Muslims Mosque, Shal



GOBOLED 80 D

IMAGE PROJECTION

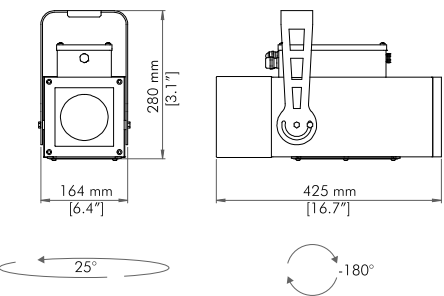
Projecting a bright and accurate rendition of graphic designs, logos and patterns in outdoor and indoor locations with the help of a dichroic or metal gobo, the versatile image projector **GOBOLED 80 D**, fitted with a single powerful LED, provides maximum creativity, dynamism and flexibility for the most demanding design and application requirements.



GOBOLED 80 D

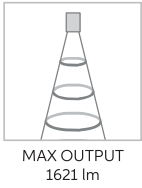
GRIVEND

GOBOLED 80 D



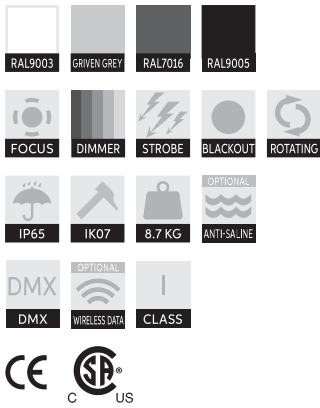
BEAM ANGLE REFERENCE

PROJECTION ANGLE 20° ÷ 32°



PHOTOMETRIC DETAILS AVAILABLE ON OUR WEBSITE

FEATURES AND OPTIONS



ACCESSORIES



AL0250
SAFETY CABLE

GRIVEN

CODES

AL2502 GOBOLED 80 D

FINISH

- W White RAL 9003
- G GRIVEN Grey
- A Anthracite RAL 7016
- B Black RAL 9005

TECHNICAL SPECIFICATIONS

GOBOLED 80 D is an IP65 image projector, whose aluminium body, fitted with an adjustable mounting yoke, hosts 1 high brightness 6500K power LED. Dimensions: 164 mm x 425 mm x 280 mm. Features: DMX, automatic and Master-Slave mode; manual adjustment of focus and linear zoom (20°÷32°); linear 0-100% dimmer function; strobe function (25 FPS max); electronic blackout; one rotating gobo slot hosts either metal or glass gobos (ø ext. 53.3 - ø int. 40 mm); one dichroic filter can also be used in combination with a metal gobo. Power supply: 100÷277V / 50-60Hz. Power consumption: 100W max. Electrical Class I. Operating temperature: -20°C to 40°C (-4°F to 104°F).

DIGITAL CONTROL SYSTEM SPECIFICATIONS AND CONFIGURATIONS AVAILABLE ON OUR WEBSITE



ITALY_Villa di Bagno, Porto Mantovano