

Customizable modules



* Accessories not included.
* For better fit, consult.

REF. MODEL 10160

Configuration REF +

Aluminum installation			
Recessed with frame	Trimless	Surface	Pendant
.RF	.TR	.SR	.PN
Finish			
A.Gray	.AG	Black	.BK
White	.W	Green	.GR
Gold	.G	Aqua	.AQ
Blue	.BL	Orange	.OR
Red	.RE	Pink	.PI
Flamingo	.FL		
Optic cover			
Opal	Microprismatic	Ice	
.OP	.MP	.IC	

Led modules	L	W	Lm 3000K/4000K
11520.02.STD	562 mm	12,4 W	1640/1680 lm
11520.03.STD	843 mm	18,6 W	2460/2520 lm
11520.04.STD	1124 mm	24,8 W	3280/3360 lm
11520.05.STD	1405 mm	31 W	4100/4200 lm
11520.06.STD	1686 mm	37,2 W	4920/5040 lm
11520.07.STD	1967 mm	43,4 W	5740/5880 lm
11520.08.STD	2248 mm	49,6 W	6560/6720 lm
11520.09.STD	2529 mm	55,8 W	7380/7560 lm
11520.10.STD	2810 mm	62 W	8200/8400 lm
11520.11.STD	3091 mm	68,2 W	9020/9240 lm

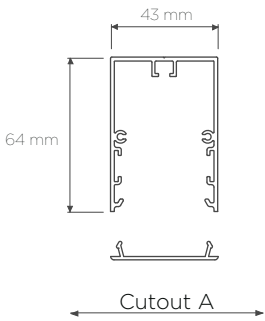
LED A++

Led modules	L	W	Lm 3000K/4000K
11520.02.HI	562 mm	22,8 W	3000/3100 lm
11520.03.HI	843 mm	34,2 W	4500/4650 lm
11520.04.HI	1124 mm	45,6 W	6000/6200 lm
11520.05.HI	1405 mm	57 W	7500/7750 lm
11520.06.HI	1686 mm	68,4 W	9000/9300 lm

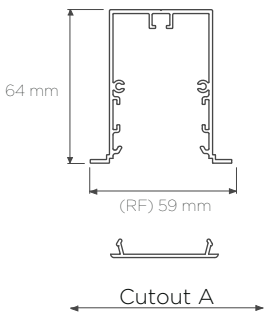
Color temperature		
3000K	4000K	2700K (Consult)
.3K	.4K	.27K
Dimmable options		
1..10V	DALI	Push
.D1	.DA	.PU
Optional		
Indirect Light (Consult)		.IN



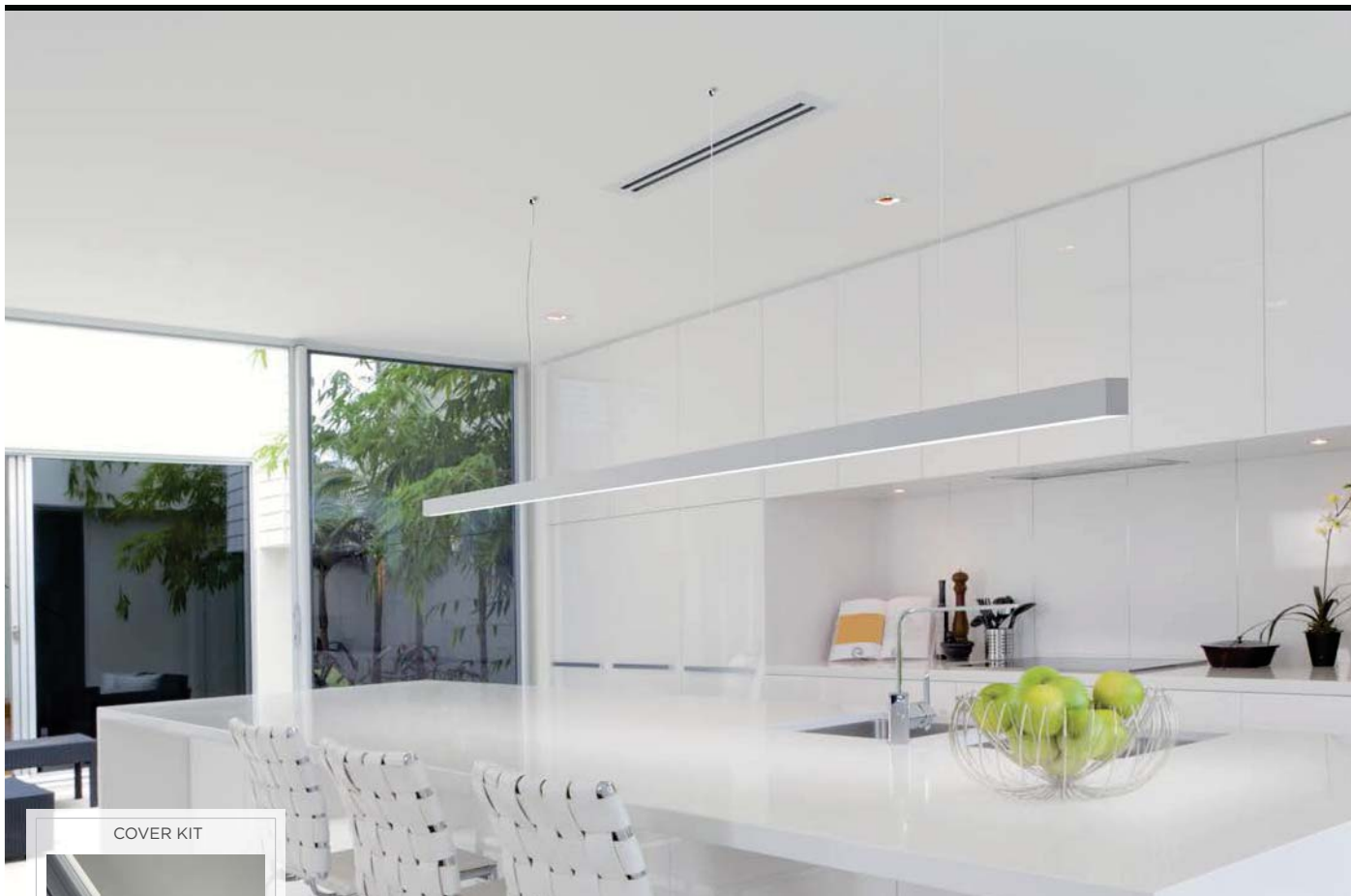
STANDARD POWER
HIGH POWER



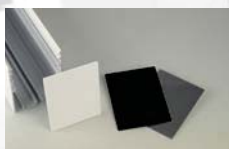
Lprofile = L+ 10 mm Ltotal = Lprofile + Cover Kit
Cutout
TR Ltotal + 1 Cutout A = 44



Lprofile = L+ 10 mm Ltotal = Lprofile + Cover Kit
Cutout
RF Ltotal - 10 Cutout A = 49



COVER KIT



- CK04 Recessed with frame
Thickness (2x8 mm)
- CK05 Trimless
Thickness (2x2 mm)
- CK06 Surface / Pendant
Thickness (2x3 mm)

SUSPENSION CABLE SC01
Pendant

Max. 2,8 m between cables
Min. 2 cables



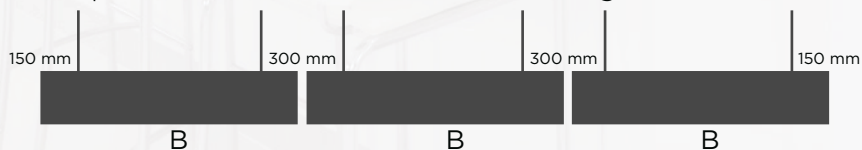
CONNECTION BASE CB01
Pendant

According to installation



6500 mm · Pendant · White · Optic cover Opal ·
Electrical System High Power · 4000K · 1.10V Dimmable

Suspension cable calculation starting from 3,1 meters.



Aluminum total lenght = Lprofile 6463 mm + (dilatation) 10 mm = 6473 mm

Aluminum unions = (Aluminum total lenght / Max. 3100 mm packaging) rounded to DOWN

Aluminum unions = 6473 / 3100 = 2,09 ~ 2 unions

Aluminum pieces = Aluminum unions + 1 = 3 pieces

B (Lenght of every piece of aluminum) = Aluminum total lenght / Aluminum pieces = 6473 / 3 = 2157,7 mm

Number of cables = (Aluminum unions * 2) + 2 = (2 * 2) + 2 = **6 cables SC01**

ALUMINUM INSTALLATION
PROFILE FINISH
OPTIC COVER

LED MODULES
COLOR TEMPERATURE
DIMMABLE OPTION

COVER KIT

SUSPENSION
CABLE

CONNECTION
BASE

$$10160.PN.W.OP + \begin{matrix} 3x \\ 1x \end{matrix} \begin{matrix} 11520.06.HI.4K.D1 \\ 11520.05.HI.4K.D1 \end{matrix} + CK06 + 6x SC01 + 1x CB01$$

$$Ltotal = (Lprofile 6463 mm + 10 mm) + (CK06 6 mm) = 6479 mm$$

ALBA T5



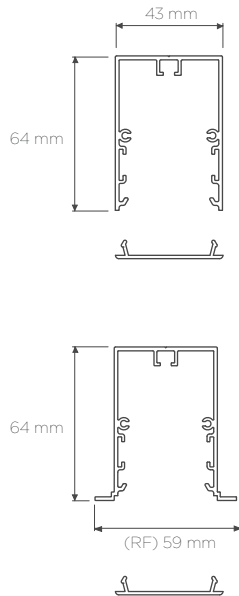
Basic modules



REF. MODEL 10160

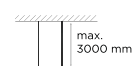
Configuration REF +

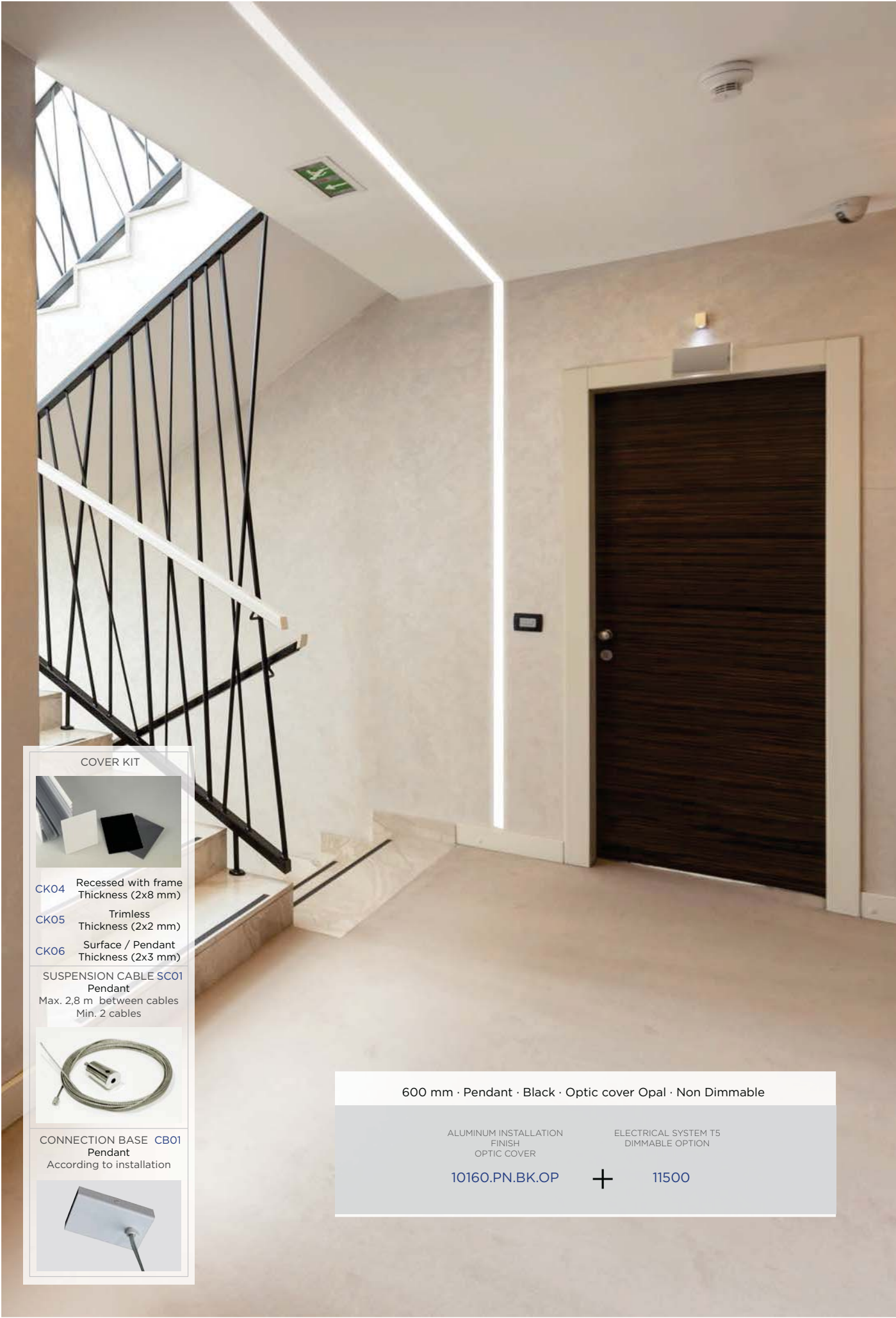
Aluminum installation			
Recessed with frame	Trimless	Surface	Pendant
.RF	.TR	.SR	.PN
Finish			
A.Gray	.AG	Black	.BK
White	.W	Green	.GR
Gold	.G	Aqua	.AQ
Blue	.BL	Orange	.OR
Red	.RE	Pink	.PI
Flamingo	.FL		
Optic cover			
Opal	Microprismatic	Ice	
.OP	.MP	.IC	



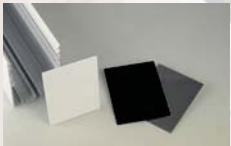
T5 electrical system		L RF	RF	L TR/SR/PN	TR
11500	1XT5 14/24 W Multi-power	610 mm	49x600 mm	600 mm	44x601 mm
11501	1XT5 21/39 W Multi-power	910 mm	49x900 mm	900 mm	44x901 mm
11502	1XT5 28/54 W Multi-power	1210 mm	49x1200 mm	1200 mm	44x1201 mm
11503	1XT5 35/49_80 W Multi-power	1510 mm	49x1500 mm	1500 mm	44x1501 mm

Dimmable options		
1..10V	DALI	Push
.D1	.DA	.PU
Optional		
Indirect Light (Consult)		.IN





COVER KIT



- CK04 Recessed with frame
Thickness (2x8 mm)
- CK05 Trimless
Thickness (2x2 mm)
- CK06 Surface / Pendant
Thickness (2x3 mm)

SUSPENSION CABLE SC01
Pendant
Max. 2,8 m between cables
Min. 2 cables



CONNECTION BASE CB01
Pendant
According to installation



600 mm · Pendant · Black · Optic cover Opal · Non Dimmable

ALUMINUM INSTALLATION
FINISH
OPTIC COVER

ELECTRICAL SYSTEM T5
DIMMABLE OPTION

10160.PN.BK.OP



11500