

NERI

Projects
Street furniture

Contents

Introduction

- 4 Company
- 6 Designers
- 8 Product range
- 10 Production and painting
- 12 Custom made projects
- 15 Fondazione Neri and Italian
museum of cast iron (MIG)
- 18 Restauration projects

Contemporary range

- 23 Carya
- 47 Dhalia
- 61 Gilia
- 83 Idesia
- 103 Liliun
- 115 Lotus
- 125 Melia

Heritage range

- 161 Layia
- 203 Nyssa
- 221 Salix
- 247 Scilla

Product type

- 292 Benches
- 294 Bollards
- 296 Railings
- 298 Litter bins
- 300 Ashtrays
- 301 Planters
- 302 Flowerbed borders
- 303 Fountains
- 304 Bicycle racks
- 305 Step-lights
- 306 Clocks
- 307 Signage
- 308 Notice boards
- 309 Bus shelters

This is an interactive PDF,
the different sections of the
publication can be navigated by
clicking on the section titles in
the contents page. To come back
to this page, click on the Neri's 'N'
positioned top right in every page.

Since 1962, Neri has been a symbol of excellence in high-end outdoor furniture and lighting systems in Italy and worldwide. Neri is the lighting standard in over half of the Italian municipalities and many prestigious mixed-use, hospitality, residential, and retail developments worldwide. The Neri message has always been and continues to be about innovation and technological research, in keeping with the same passion and craftsmanship that characterised their origins.

Founded by Domenico Neri, artist, sculptor, and attentive observer and interpreter of the aesthetic and functional demands of cities, Neri promotes decor and performance through its Heritage and the Contemporary ranges. Restoration activities, reproductions, bespoke products as well as partnerships with architects, lighting designers and energy managers are part of the offering of a company with a presence in over 100 countries.



The approach attentive of collective needs, the attention to technological innovation, the use of new materials, the dialogue with the surroundings, are the basis for an effective design that focuses on places, people and the best way to experience the social and environmental context.

Neri designers have always been shaping dreams, often daring, always innovative dreams. Starting from the founder, Domenico Neri, whose love for art, urbanism and decoration have become the principle of an elegant style, which is present today unchanged in many countries around the world. Many and various designers have worked with us over the years, some of them were successful designers, many of them were young people, all eager to exceed the records achieved and to contribute to enhancing our surroundings, along with Neri distinguishing excellence and style.



Domenico Neri



Yves Corminboeuf



Pietro Zulian



Franco Zagari



Emo design



Alfredo Farnè



Studio Brunetti e Filipponi



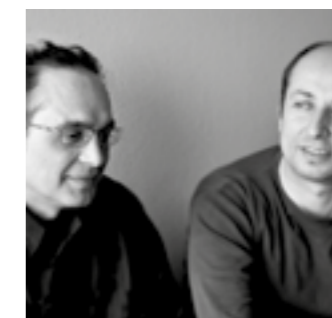
Studio ATA



Gianni Vianello Vinci



Iosa Ghini Associati



MZDS_Manzi e Zanotti



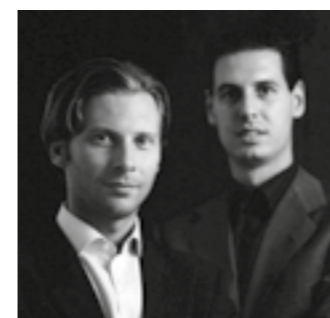
Makio Hasuike



Gabriele Pezzini



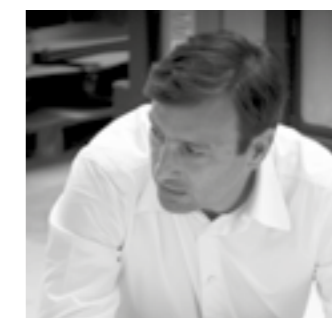
Paolo Portoghesi



Baroni & Valeriani Architetti



Studio Lepreti



Marco Casamonti



Italo Rota

Neri offers three product categories designed to improve and enhance our surroundings: lighting, street furniture and structures.

Unique families of products are designed to speak the same aesthetic across all three categories allowing for a cohesive and harmonious site plan. Neri offers both the Contemporary range, conceived with prestigious designers, as well as the Heritage range derived from the experience and classical tradition of our town and city centres. In addition to the collection in our catalogues, company know-how and experience allow Neri to work with designers on product modifications, customized design services and restoration, reproduction and preservation of historical elements that have been enhancing our cities throughout the centuries.

Lighting



Rocella Ionica – IT



Milan – IT



Senigallia – IT



Cork – IE



Baku – AZ



Dorado – PR

Street furniture



Meridian – US



Orlando – US



Carpiano – IT



Saronno – IT



Courmayeur – IT



Gubbio – IT

Structures



Portland – US



Gardone Riviera – IT



Montecarlo – MC



Lanzarote – ES



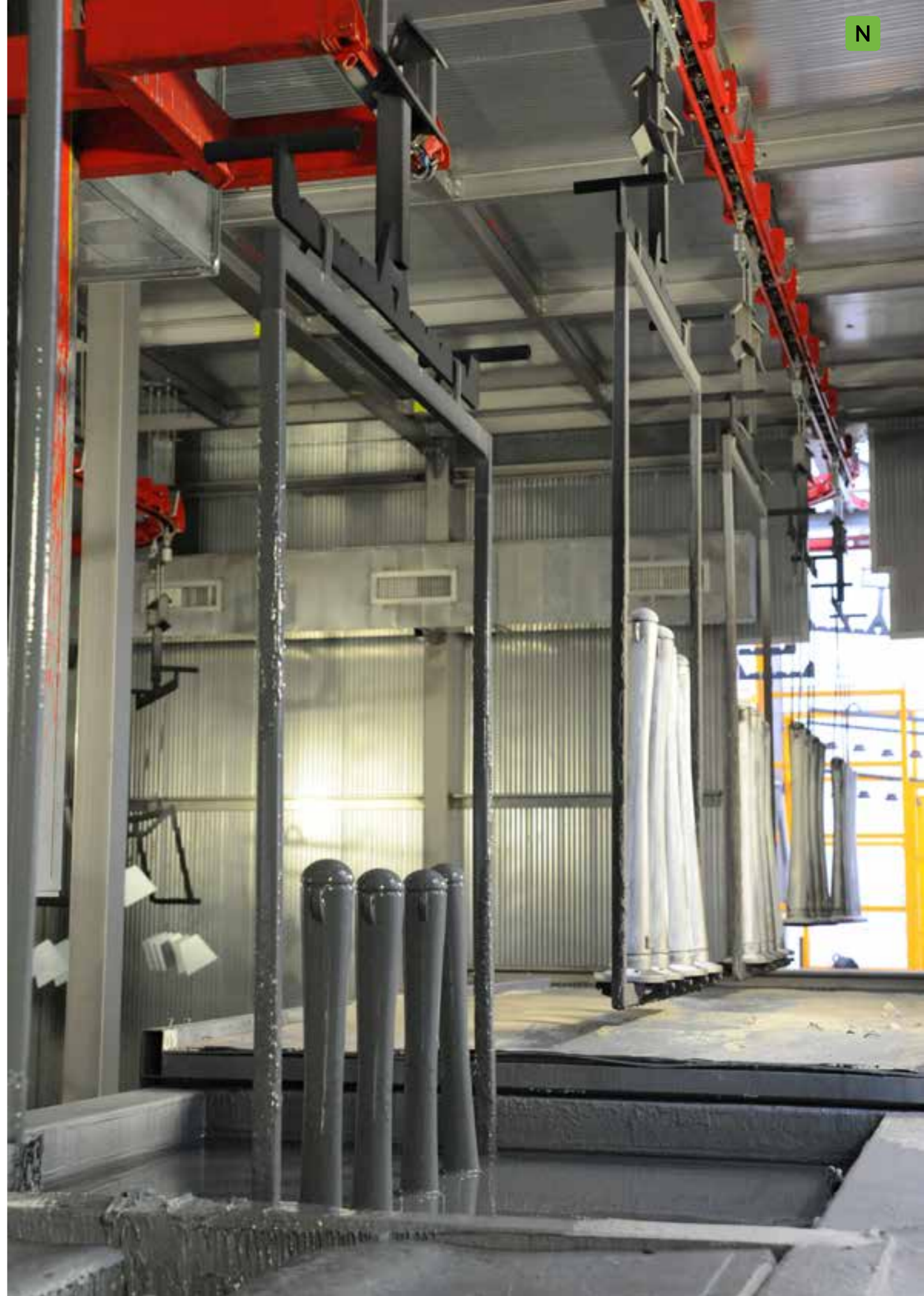
Acri – IT



Turin – IT

All of Neri industrial production takes place in a facility that meets the highest standards of sustainability and quality control.

In order to protect the environment, the company has significantly reduced not only corporate consumption, but also the volume of its solvent emissions. The production process has been improved and an example is the water-based painting cycle, which uses water-soluble substances that are harmless to the ecosystem. The use of these preparations has improved the performance of the surfaces of all the products. For Neri, green also means minimizing product maintenance, which, as it is increasingly required, also increases its impact on the economy and the ecological indicators.



Cities, spaces, parks and squares are not identical entities and one-size-fits-all solutions cannot be applied to them. Each place has its own history, a particular experience, its own identity.

For this reason, Neri provides advice to projects or ideas on paper and helps them become constructive, luminous ideas attuned to human and environmental needs. Our in-house team provides targeted responses to incoming requests from clients and communities; it is a resource fully dedicated to planners, architects, project managers and lighting designers who are enabled to directly and fully tap into our know-how and technology, obtaining maximum benefit in terms of control over the evolution of their projects.



Porto S. Elpidio – IT



Treviso – IT



Moscow – RU



Vilnius – LT



Grado – IT



Trieste – IT



Cesena – IT



Canazei – IT



Riccione – IT



Milan – IT



Florence – IT



Riccione – IT



Cosenza – IT



Abu Dhabi – AE



Salerno – IT



Dubai – AE



Madonna di Campiglio – IT



Florence – IT



NERI

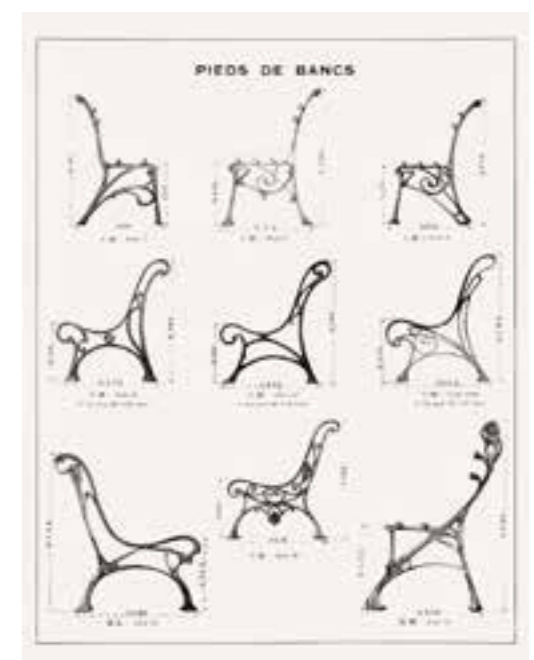
Fondazione Neri and Italian
museum of cast iron (MIG)

Neri Foundation is a non-profit organization created in 2005. Since 2010 it is officially recognised by the Italian state.

The Foundation curates a unique collection. It researches the past and present and identifies trends that will shape the city's future regarding the life quality and the possibility for urban spaces to promote social relations, with their layout and furnishings.

Neri Foundation manages the Italian museum of cast iron (MIG) with its three exhibitions and its Documentation Centre. The collection consists mainly of street lamps from different Italian and European cities, produced between 1800 and the early decades of 1900, fountains and benches, railings, wall brackets, door lintels, knockers and stone posts. It also has vintage catalogues and photos, thematic books and modern images within its archive.

The Neri Foundation profile is completed by permanent and temporary exhibitions, collaborative initiatives with cultural institutions and research centres, exchanges with universities and corporate museums at national and international level.





From the middle of the nineteenth century, cities have been characterized by the variety and beauty of cast iron elements used for urban decoration. Each city features a different type of lamp post, and these respectively characterize the image and the urban history of many famous locations.

Neri has built up specific experience and skills when it comes to restoration, with a rigorous method and particular philological attention. Restoration means trying to reconnect what has been interrupted, bringing back to life the identity of urban spaces, their uniqueness and the perceptive harmony of their settings. In cities where the original lamp posts have disappeared and it is therefore impossible to restore them, Neri suggests to reproduce the same objects. The cultural value of preserving the memory of these elements is equivalent to restoration sometimes.



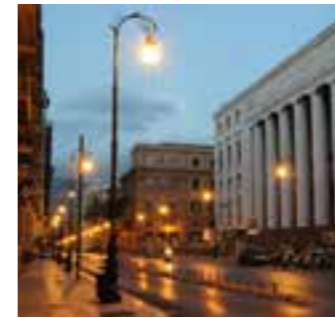
Loreto – IT



Cesenatico – IT



Bologna – IT



Palermo – IT



Venice – IT



Genova – IT



Dublin – IE



Verona – IT



Montagnana – IT



Pisa – IT



Trieste – IT



Marina di Ravenna – IT



Verona – IT



Lucca – IT



Dublin – IE



Novellara – IT



Nizza – FR



Siena – IT

Contemporary range

23 Carya

47 Dhalia

61 Gilia

83 Idesia

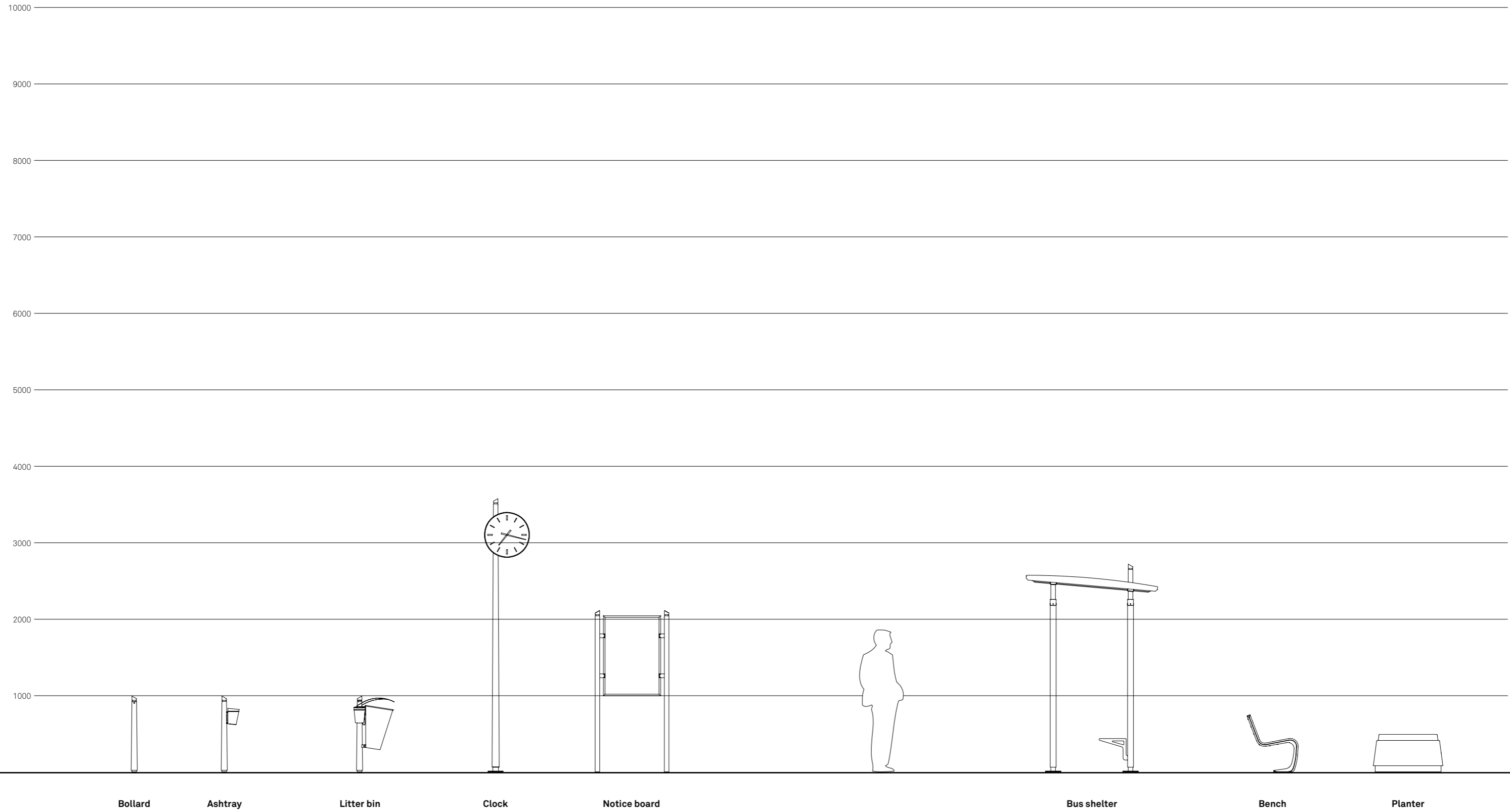
103 Liliium

115 Lotus

125 Melia

Carya. The series features a conical shape with an angled end element. This aesthetic characteristic defines many of its products, that are a bollard, an ashtray, a litter bin, a clock, a notice board and a bus shelter. Carya products have been designed to match Chara lighting system.







**CARYA / bench**

Catanzaro – IT
Courmayeur – IT
Lugagnano – IT

2109.002.018
2109.002.018 (colour on demand)
2109.002.018



CARYA / litter bin

Cesenatico – IT
Teolo – IT

2278.000
2278.000



CARYA / litter bin

Corinaldo – IT
Follonica – IT

2278.000
2278.000.002



CARYA / ashtray

Rimini – IT
Longiano – IT

2801.004.002
2801.004.002



CARYA / bollard

Savignano sul Rubicone – IT 2978.000
Teolo – IT 2978.000



**CARYA / bollard**

| | |
|-----------------------------|----------|
| Livorno – IT | 2978.000 |
| Popoli – IT | 2978.000 |
| Savignano sul Rubicone – IT | 2978.000 |







CARYA / notice board

Sant'Arcangelo – IT
Sansepolcro – IT

2298.100
2298.300



CARYA / clock

Termoli - IT
Milan - IT

2208.001
2208.001



CARYA / bus shelter

Gaeta - IT

2403.001.300 + 0002.403



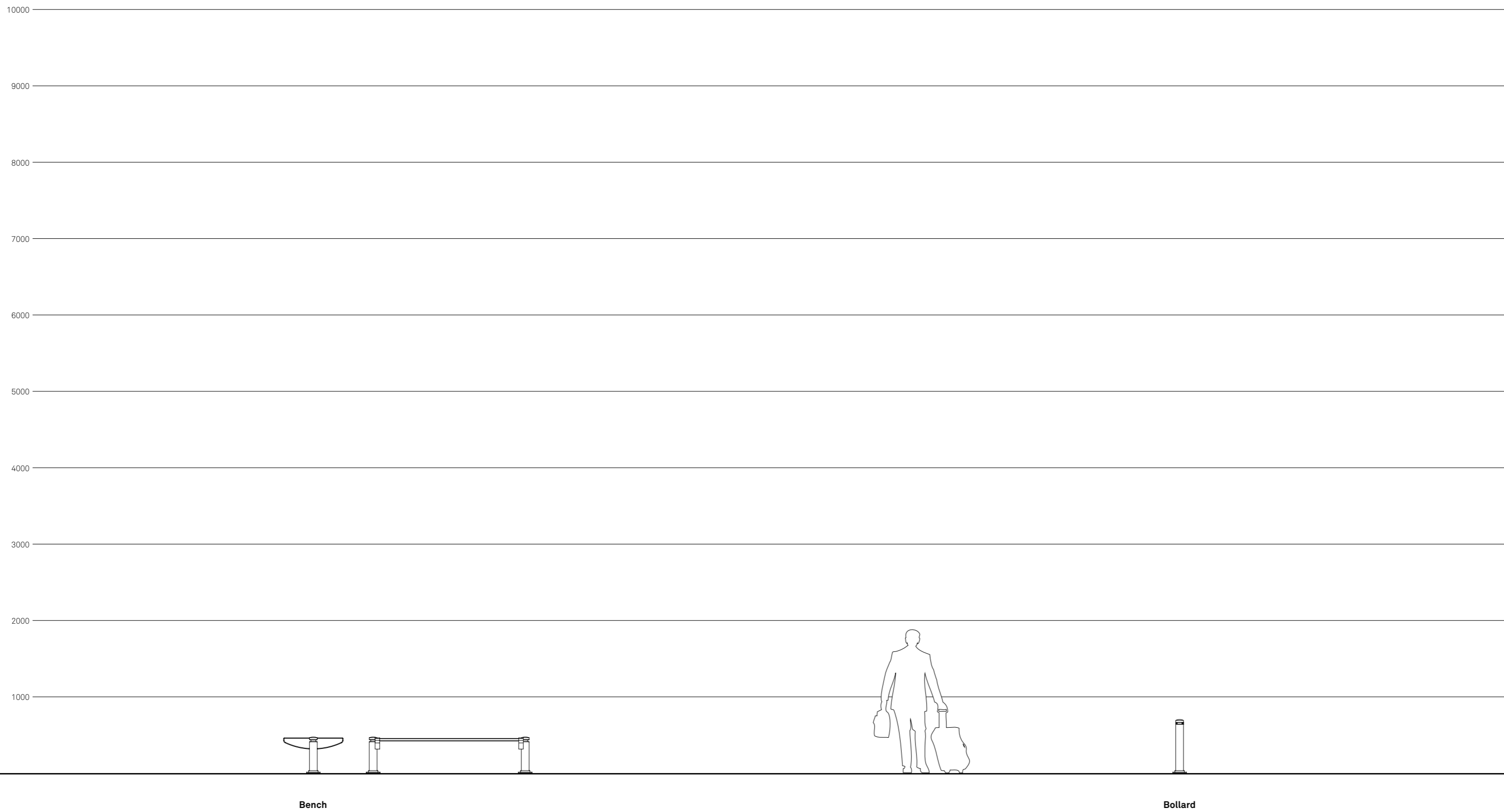
Dhalia. The series is characterized by a rational and geometric design. It's composed by a bollard and a bench. Dhalia products have been designed to match Mizar lighting system.



DHALIA

Series overview

scale 1:50





DHALIA / bench

Siracusa - IT
Longiano - IT

2194.002.010
2194.002.010



**DHALIA / bench**

Montiano – IT
Peglio – IT
Cesenatico – IT

2194.002.010
2194.002.010
2194.002.010



DHALIA / bollard

| | |
|-----------------------|-------------------------|
| Cesenatico – IT | 2975.000 |
| Siracusa – IT | 2975.000 + 9525.411.002 |
| Pontoglio – IT | 2975.000 + 9525.411.002 |
| Misano Adriatico – IT | 2975.000 |



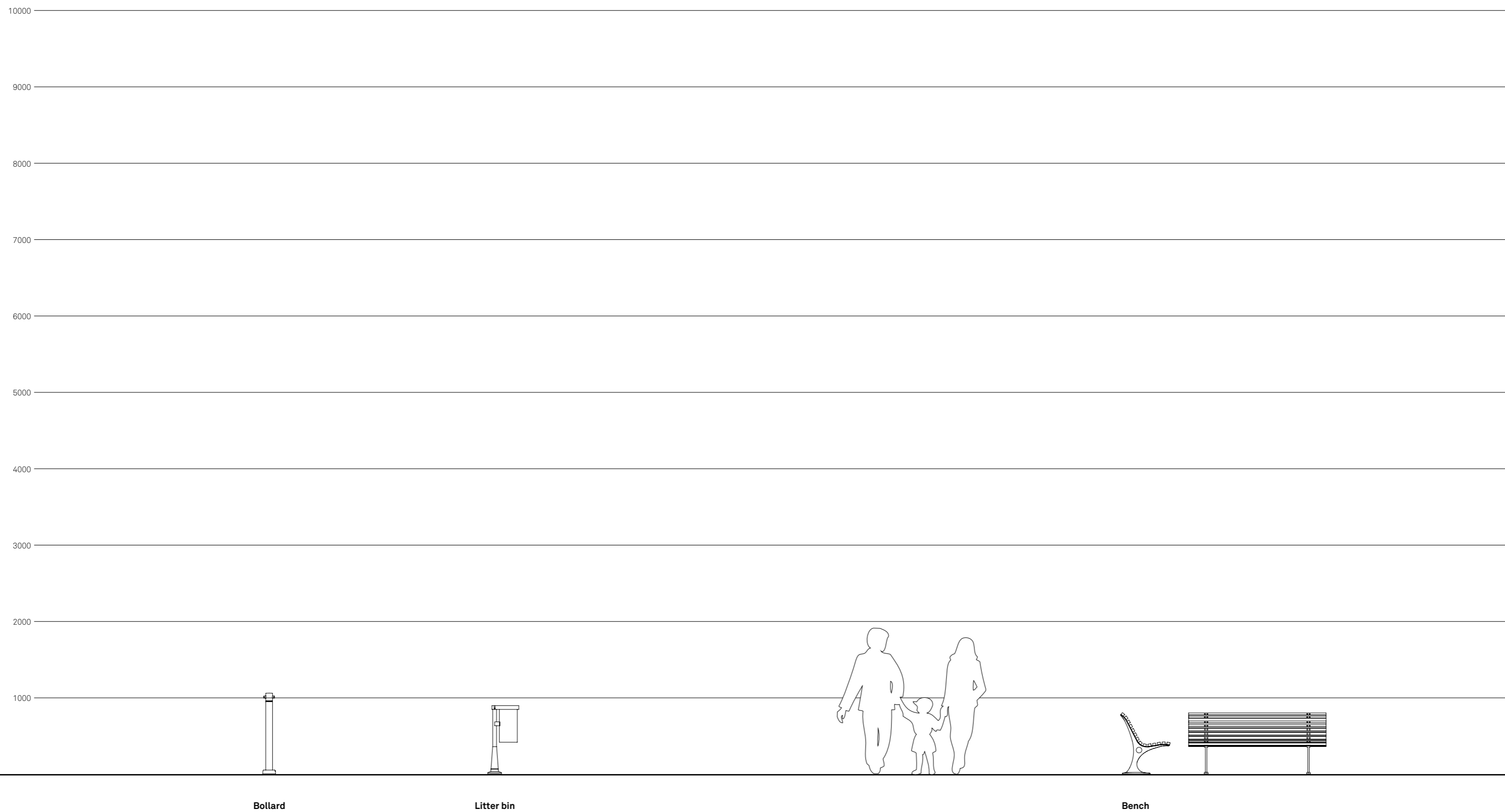
DHALIA / bollard

| | |
|-----------------------|----------|
| Bagno di Romagna – IT | 2975.000 |
| Cesenatico – IT | 2975.000 |
| Borgo S.Giacomo – IT | 2975.000 |



Gilia. The series is composed by three pieces: bollard, litter bin and bench. Curved and pleasant lines are the link between the Gilia series and the coordinated lighting system Propus.







GILIA / bench

Meridian – US

2147.002







GILIA / bench

Gubbio – IT
 Paris – FR
 Colleferro – IT

2147.002
 2147.002
 2147.002



GILIA / bench

Cesenatico – IT 2147.002
Corinaldo – IT 2147.002
Parma – IT 2147.002





GILIA / litter bin

Vilnius – LT
 Calcinata – IT

2273.001
 2273.000



GILIA / litter bin

Longiano – IT
San Mauro Pascoli – IT

2273.002
2273.001





GILIA / bollard

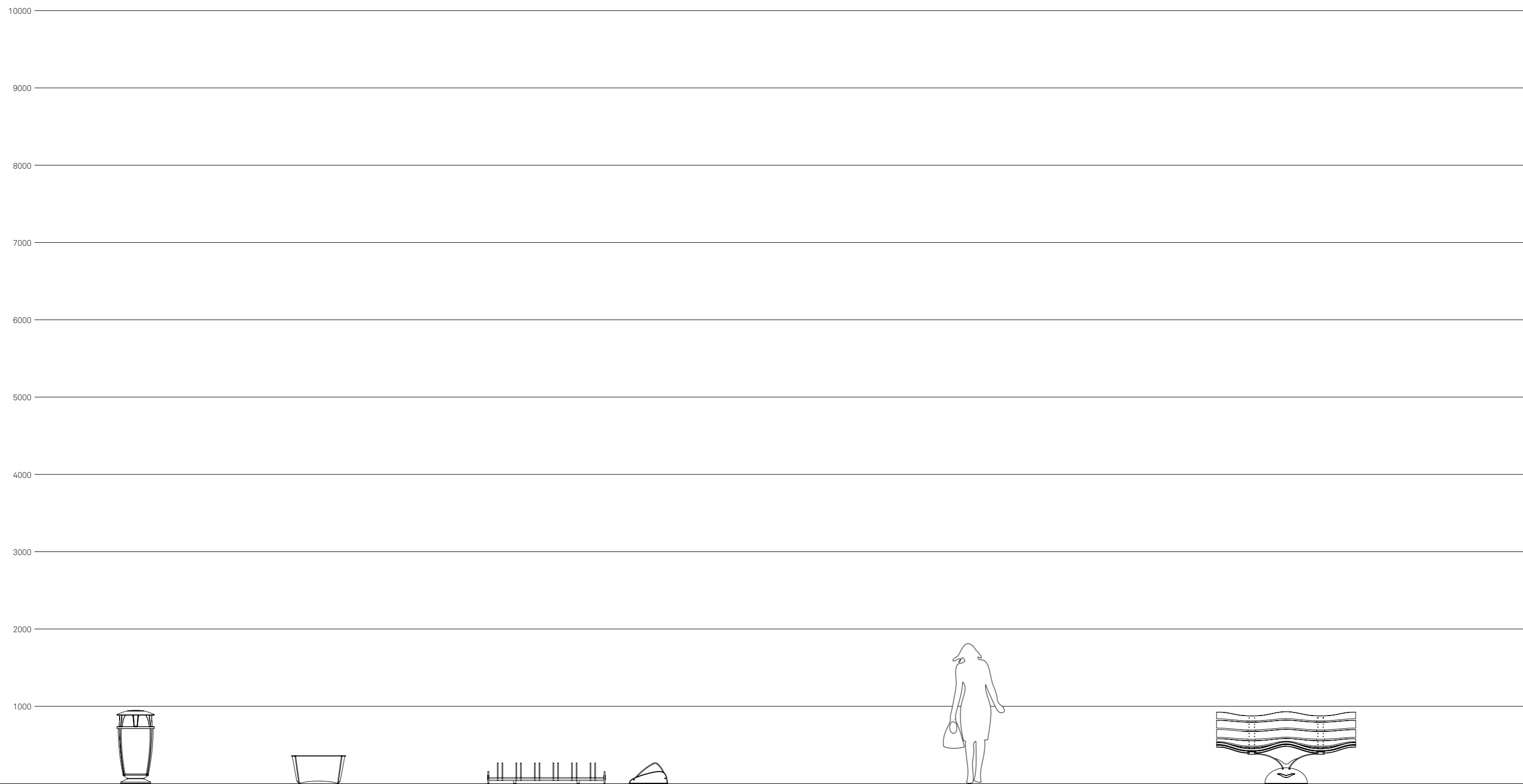
Lago d'Iseo - IT

2973.000



Idesia. The series includes a litter bin, a planter, a bicycle rack and a bench. The soft lines of these products match the ones of the Saiph lighting system. The wavy bench has a LED light at the base, which distinguishes the product improving visibility at night time.





Litter bin

Planter

Bicycle rack

Bench



IDESIA / bench

Civitanova Marche – IT
Longiano – IT

2197.002
2197.300.002



IDESIA / litter bin

| | |
|---------------|----------|
| Grado – IT | 2277.002 |
| Gavardo – IT | 2277.002 |
| Portland – US | 2277.002 |







IDESIA / litter bin

Olbia - IT
Gaeta - IT

2277.002
2277.002



IDESIA / bicycle rack

| | |
|-----------------|----------|
| Cesena – IT | 2285.000 |
| Gambettola – IT | 2285.000 |
| Gambettola – IT | 2285.000 |





**IDESIA / planter**

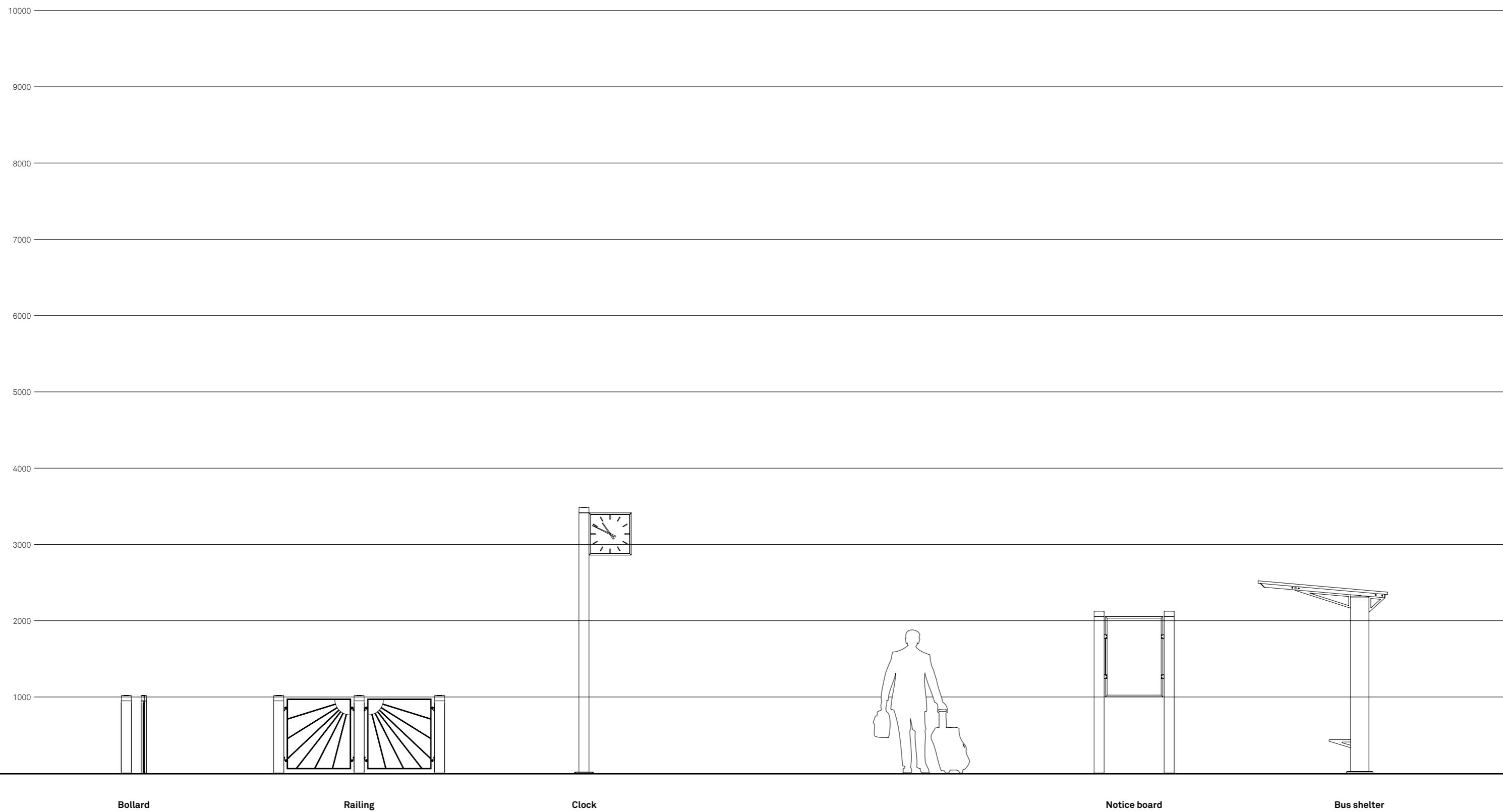
Cesena - IT
Siracusa - IT

2206.000
2206.000



Lilium. The ellipsoidal post is the hallmark of the Lilium series. It features all the products of the series: bollard, railing, clock, notice board and bus shelter.





Bollard

Railing

Clock

Notice board

Bus shelter



LILIUM / bollard

Gambettola – IT
Pontedera – IT
Monte Colombo – IT

2968.000 (colour on demand)
2968.000 (colour on demand)
2968.000 + 9525.411.002 (colour on demand)



LILIUM / railing

| | |
|-----------------|--|
| Pimentel – IT | 2968.000 + 0002.003.003 |
| Pimentel – IT | 2968.000 + 0002.003.003 |
| Gambettola – IT | 2968.000 + 0002.003.003 (colour on demand) |
| Gambettola – IT | 2968.000 + 0002.003.003 (colour on demand) |





LILIUM / clock

Benalmadena – ES

2209.000



LILIUM / notice board

Gambettola – IT

2209.200 (colour on demand)



Lotus. The unique feature of the Lotus series is the transparency of its elements. The absence of material becomes the decorative elements in its bench and bollard. The series has been designed to match the Rigel lighting system.



LOTUS

Series overview

scale 1:50



Bench

Bollard

LOTUS / bench

Cinecittà – IT
Longiano – IT

2146.002 (colour on demand)
2146.002



**LOTUS / bench**

Grotta d'Adda – IT
Palmi – IT
Cinecittà – IT

2146.002
2146.002
2145.002 (colour on demand)



LOTUS / bollard

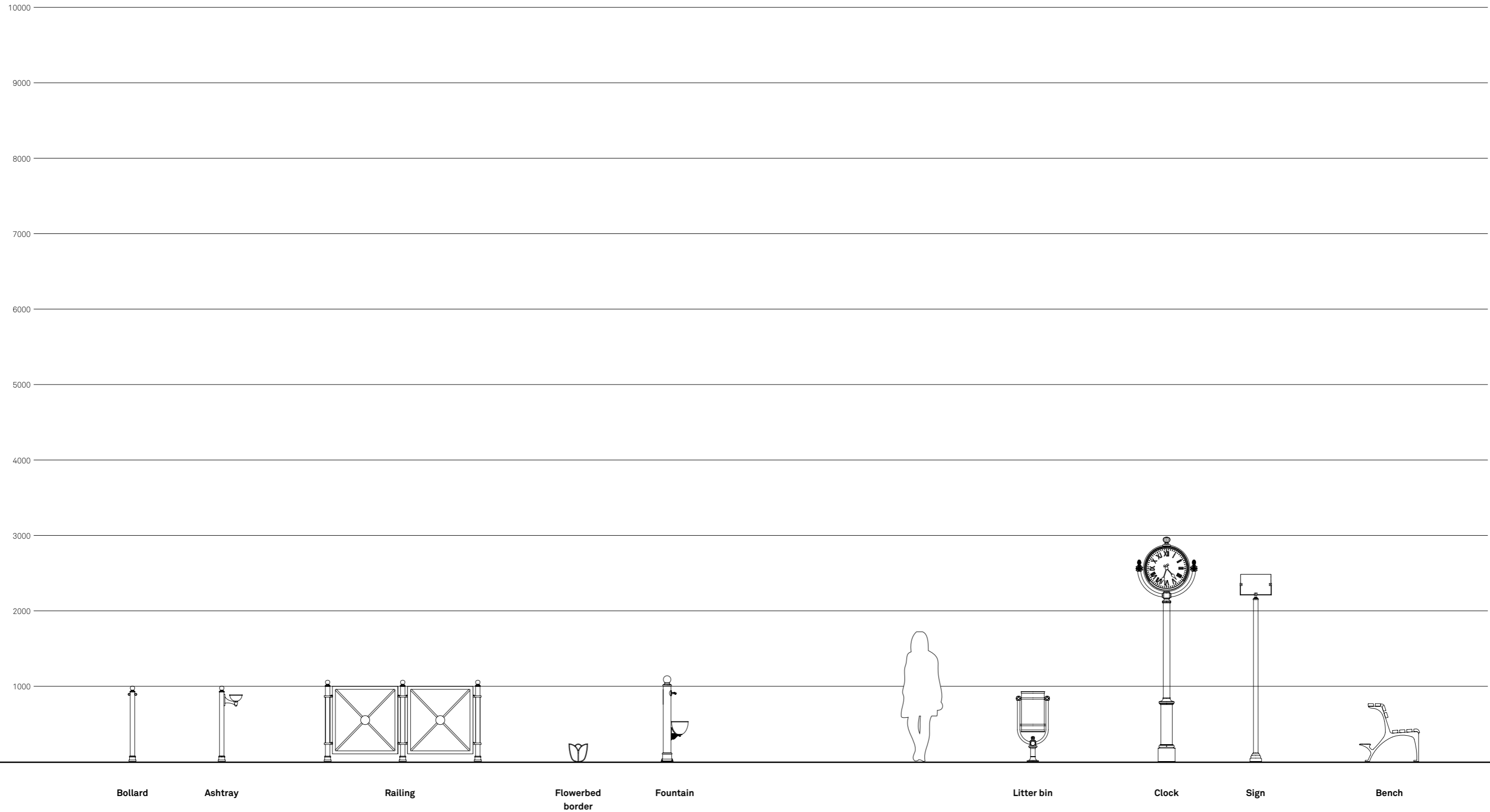
Trento – IT
Sala Consilina – IT
Sala Consilina – IT

2969.000
2969.000 + 9525.411.002
2969.000 + 9525.411.002



Melia. The series is a combination of classical and modern style, of cast iron and steel. Its functional and essential elements generate a collection of products that can easily be part of different architectural contexts.





MELIA / bench

Corinaldo – IT 2191.002
Corinaldo – IT 2191.002
Chiaravalle – IT 2191.002



MELIA / bench

Termoli – IT
Recanati – IT

2191.002
2191.002



MELIA / bench

| | |
|------------------|----------|
| Chiaravalle – IT | 2191.002 |
| Loreto – IT | 2191.002 |
| Sant'Angelo – IT | 2191.002 |
| Gallipoli – IT | 2191.002 |



**MELIA / litter bin**

Sala di Cesenatico – IT
Cesenatico – IT

2274.000
2274.000



MELIA / litter bin

Sinalunga – IT
Roseto – IT
Cesena – IT

2275.101
2275.001.002
2275.000.002





MELIA / bollard

Limone - IT
Lecce - IT

2971.000 + 9525.411.002
2971.000 + 9525.411.002



MELIA / bollard

Gaiano – IT
Sant'Ippolito – IT

2971.000 + 9525.411.002
2971.000 + 9525.411.002





MELIA / railing

Palmi – IT 2971.050.001 + 9522.842
Villa San Giovanni – IT 2971.050.001 + 9522.842
Tradate – IT 2970.000.003 + 9525.439.031
San Michele in Pensilis – IT 2970.000.003 + 9525.439.031



**MELIA / fountain**

Pescocostanzo – IT
Rimini – IT

2830.000
2830.000



MELIA / flowerbed border

| | |
|----------------------|----------|
| Loano – IT | 3214.000 |
| Monte Cremonese – IT | 3214.000 |
| Numana – IT | 3215.000 |







MELIA / clock

Vilnius – LT
Peglio – IT

2211.000.003
2211.000.003



MELIA / sign

| | |
|---------------|----------|
| Bologna – IT | 2254.000 |
| Cesena – IT | 2254.000 |
| Brindisi – IT | 2254.000 |



Heritage range

161 Layia

203 Nyssa

221 Salix

247 Scilla

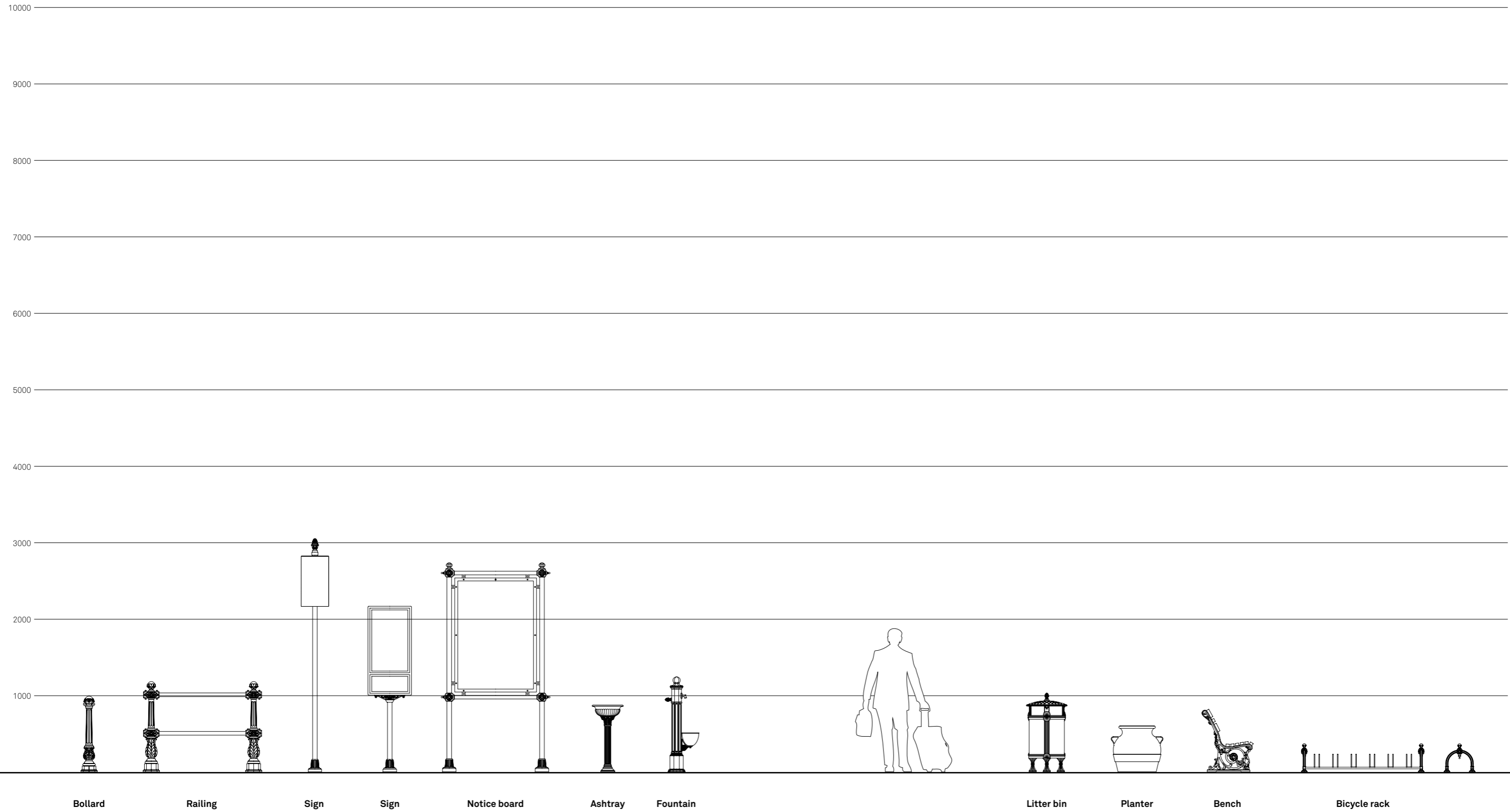
Layia. The series includes: bench, signage, litter bin, bicycle rack, planter, fountain, ashtray, bollard, railing and notice board. Flutings and floral decorations have been designed to match the posts of Sheliak lighting system.



LAYIA

Series overview

scale 1:50



Bollard

Railing

Sign

Sign

Notice board

Ashtray

Fountain

Litter bin

Planter

Bench

Bicycle rack

LAYIA / bench

Cinecittà – IT
Loreto – IT

2151.002.018 (colour on demand)
2150.002.018





LAYIA / bench

Portland – US
Lipari – IT

2151.002.018
2151.002.018



LAYIA / bench

Castel Romano – IT
Cesena – IT

2151.002.018
2151.002.018



**LAYIA / litter bin**

Houston – US

San Martino in Pensilis – IT

Noventa di Piave – IT

2270.000

2270.000.002

2270.000



LAYIA / litter bin

Portland – US
Orlando – US

2270.000
2270.000



LAYIA / bollard

Osimo – IT
Rome – IT

2983.000 + 9525.411.002
2983.000 + 9525.411.002





LAYIA / bollard

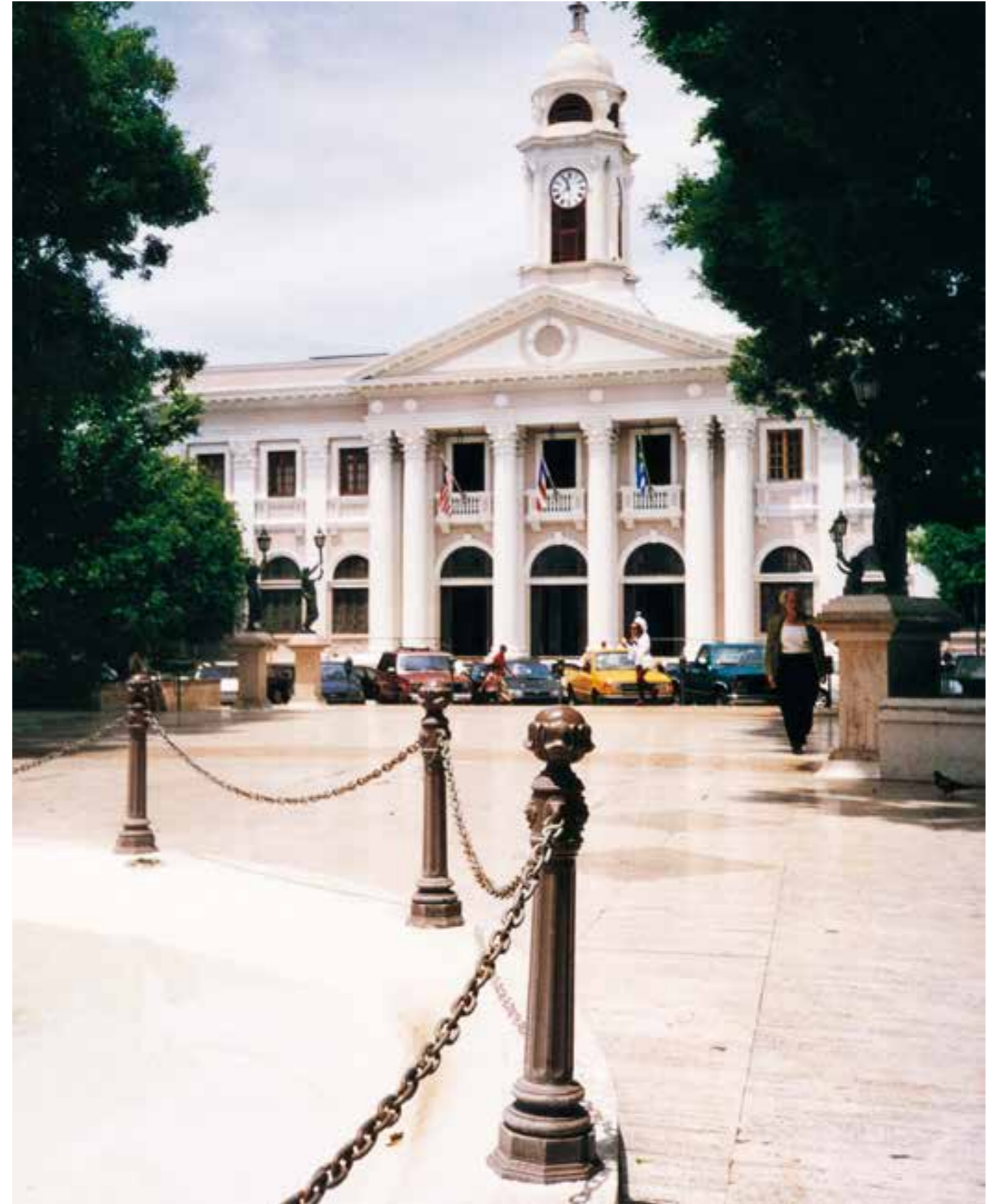
Longiano – IT
 Imola – IT
 Calabasas – US

2983.000
 2983.000 + 9525.411.002
 2983.000 + 9525.411.002



LAYIA / bollard

Sperlonga – IT 2986.000
 Fagnano Olona – IT 2986.000 + 9525.411.002
 Mayaquez – PR 2986.000 + 9525.411.002



LAYIA / railing

Pescina – IT
Rome – IT

2980.200 + 9522.848
2980.200 + 9522.848



LAYIA / ashtray

Limone - IT

2820.000.002



LAYIA / bicycle rack

Carpiano – IT
Cesenatico – IT

2282.000
2282.000





LAYIA / planter

| | |
|------------------|--------------|
| Catanzaro – IT | 2212.000.001 |
| Catanzaro – IT | 2212.000.001 |
| Villasimius – IT | 2212.000.001 |



LAYIA / sign

| | |
|----------------|----------|
| Catanzaro – IT | 2253.003 |
| Chioggia – IT | 2253.003 |
| Rome – IT | 2253.003 |





LAYIA / sign

| | |
|--------------------------|----------|
| Rome – IT | 2253.003 |
| Peschiera del Garda – IT | 2253.003 |
| Pozzallo – IT | 2253.003 |



LAYIA / fountain

Cesena – IT
Imola – IT

2810.000
2810.000





LAYIA / sign

| | |
|--------------------|----------|
| Grumello – IT | 2257.000 |
| Montecassiano – IT | 2257.000 |
| Bellaria – IT | 2257.000 |



LAYIA / sign

| | |
|--------------|----------|
| Orlando - US | 2257.000 |
| Orlando - US | 2257.000 |
| Nardò - IT | 2257.000 |



LAYIA / notice board

Milan - IT
Marsala - IT
Mantova - IT

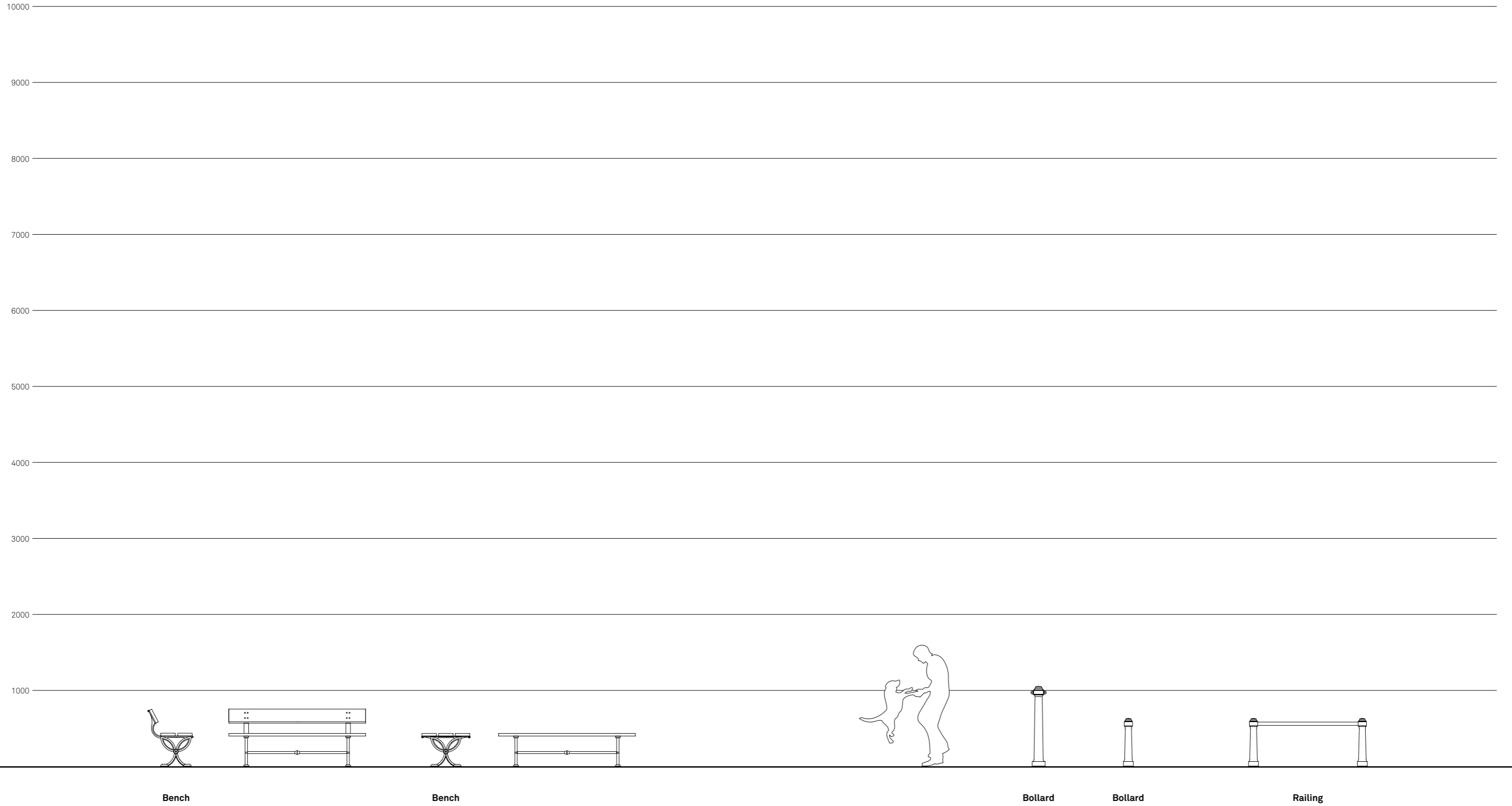
2292.000.500 + 9514.327/S
2293.000.600
2293.000.600





Nyssa. The series, like the matching lighting system Maia, approaches the classical style with simplicity of decoration. It includes benches, a conical bollard in two different sizes and railing.





NYSSA / bench

Longiano – IT
Carnago – IT

2171.002.018 (colour on demand)
2171.002.018 (colour on demand)





NYSSA / bench

Cesenatico – IT
Sistiana – IT
Longiano – IT

2170.002.018
2170.002.018 (colour on demand)
2170.002.018 (colour on demand)



NYSSA / bench

| | |
|--------------------|--------------|
| Monopoli – IT | 2170.002.018 |
| Cesenatico – IT | 2170.002.018 |
| Popoli – IT | 2170.002.018 |
| Montecompatri – IT | 2170.002.018 |



NYSSA / bollard

Prato – IT
Cesena – IT

2989.000.003
2989.000.003





NYSSA / bollard

Aibonito – PR
Trieste – IT

2985.000
2985.000 + 9525.411.002



**NYSSA / bollard**

Cesena – IT
Trani – IT

2985.000
2985.000 + 9525.411.002



Salix. All the products of this series feature a smooth and essential design, so that they can be widely used, as they easily fit in with different context. The Salix series has been designed to match Alcor lighting system.



10000

9000

8000

7000

6000

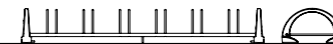
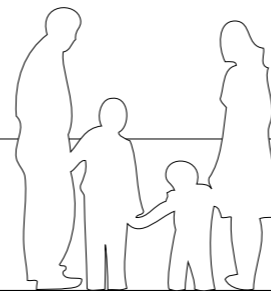
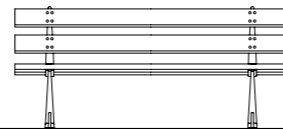
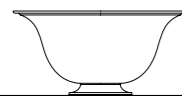
5000

4000

3000

2000

1000



Planter

Planter

Bollard

Bench

Bicycle rack

Step-light

Step-light

**SALIX / bench**

Cesena – IT
Catanzaro – IT

2142.002
2142.002



SALIX / bench

Catanzaro – IT
Houston – US

2142.002 (colour on demand)
2142.002 (colour on demand)





SALIX / bollard

| | |
|------------------|-------------------------|
| Milan – IT | 2995.000 |
| Rimini – IT | 2995.000 + 9525.411.002 |
| Villasimius – IT | 2995.000 |



SALIX / bollard

Milan - IT

2995.000



**SALIX / step-light**

Soverato – IT
Ancona – IT
Vaglio – IT

1010.300
1009.300
1010.300







SALIX / planter

| | |
|---------------|----------|
| Acireale - IT | 2204.000 |
| Acireale - IT | 2204.000 |
| Saronno - IT | 2204.000 |



SALIX / planter

Fratta Polesine – IT
Ascoli Piceno – IT

2204.000
2204.000



**SALIX / planter**

Castel Raimondo – IT
Lipari – IT

2204.000
2204.000



SALIX / planter

Borgo San Lorenzo – IT

2203.001



**SALIX / bicycle rack**

Longiano - IT
Sperlonga - IT

2284.000
2284.000



Scilla. The unique features of the Scilla series are its decorations, made to match the posts of Castore lighting system.



SCILLA

Series overview

scale 1:50



Bollard

Clock

Sign

Bus shelter

Flowerbed border

Fountain

Litter bin

Bench

**SCILLA / bench**

Milan - IT
Limonc - IT

2100.100
2100.100



SCILLA / bench

Barranquitas – PR
Caccamo – IT

2100.200 (colour on demand)
2100.200



SCILLA / bench

San Martino in Pensilis – IT 2067.300
Longiano – IT 2100.300
Roccaraso – IT 2067.300



**SCILLA / bench**

Cesena – IT

2067.300

San Martino in Pensilis – IT

2067.500 (extra module on demand)



SCILLA / litter bin

Aibonito – PR
Cesenatico – IT
Dolo – IT

2271.000 (colour on demand)
2271.000
2271.000



SCILLA / litter bin

Imola – IT

Gambettola – IT

Gambettola – IT

2271.000.002

2272.000.005 (ashtray and colour on demand)

2272.000.005 (ashtray and colour on demand)



**SCILLA / bollard**

Grumello – IT
Gradara – IT

2993.000 + 9525.411.002
2993.000



SCILLA / bollard

Alej – IT
Las Vegas – US

2993.000
2993.000



SCILLA / bollard

Saronno – IT
 Taranto – IT
 Bari – IT

2988.000
 2988.000 + 9525.411.002
 2988.000 + 9525.411.002



SCILLA / bollard

Piazzola sul Brenta – IT 2988.000
Irvine – US 2988.000



**SCILLA / fountain**

Dolo - IT
Gubbio - IT

2805.000
2805.000



SCILLA / flowerbed border

| | |
|-----------------|---------------------|
| Aguadilla – PR | 3222.000 |
| Grottaglie – IT | 3222.000 |
| Foggia – IT | 3221.000 + 3222.000 |



SCILLA / clock

Los Angeles - US

2211.000



SCILLA / clock

Orlando – US
Ali Terme – IT

2211.000
2211.000



SCILLA / clock

Farmington – US 2220.000
San Giovanni Rotondo – IT 2220.000





SCILLA / sign

Chiaravalle – IT
Marentino – IT2255.000
2255.000



SCILLA / bus shelter

| | |
|------------------------|----------|
| Chicago – US | 2400.007 |
| Chicago – US | 2400.007 |
| Maiolati Spontini – IT | 2400.001 |



SCILLA / bus shelter

| | |
|-----------------|--------------|
| Castiadas – IT | 2400.001 |
| Senigallia – IT | 2400.001 |
| Meridian – US | 2400.001 |
| Dolo – IT | 2400.001.001 |



SCILLA / bus shelter

Barranquitas – PR
Gardone Riviera – IT

2400.005
2400.005



Product type

- 292** Benches
- 294** Bollards
- 296** Railings
- 298** Litter bins
- 300** Ashtrays
- 301** Planters
- 302** Flowerbed borders
- 303** Fountains
- 304** Bicycle racks
- 305** Step-lights
- 306** Clocks
- 307** Signage
- 308** Notice boards
- 309** Bus shelters

BENCHES



Carya page 26



Dhalia page 50



Gilia page 64



Idesia page 86



Lotus page 118



Melia page 128



Nyssa page 208



Nyssa page 206



Layia page 164



Salix page 224



Scilla page 250

BOLLARDS



Carya page 34



Dhalia page 57



Gilia page 78



Lilium page 106



Layia page 174



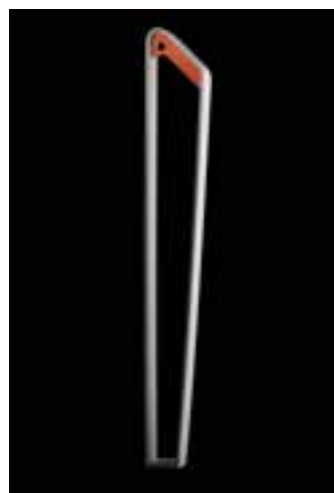
Layia page 178



Nyssa page 212



Nyssa page 214



Lotus page 122



Melia page 138



Melia page 140



Salix page 228



Scilla page 262

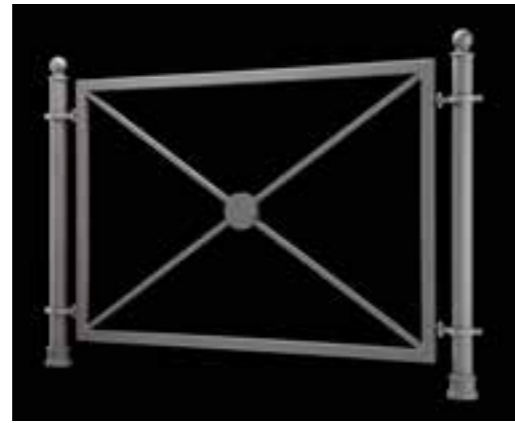


Scilla page 266

RAILINGS



Lilium page 108



Melia page 147



Melia page 146



Layia page 180



Nyssa page 212

LITTER BINS



Carya page 30



Gilia page 74



Gilia page 76



Idesia page 88



Layia page 170



Melia page 134



Melia page 134



Melia page 136



Melia page 137



Scilla page 258

ASHTRAYS

PLANTERS



Carya page 33

Carya page 33

Layia page 182



Melia page 152

Melia page 152



Carya page 38

Idesia page 98



Layia page 186

Salix page 236

Salix page 242

FLOWERBED
BORDERS

FOUNTAINS



Melia page 150

Melia page 151



Scilla page 272

Scilla page 273



Melia page 148



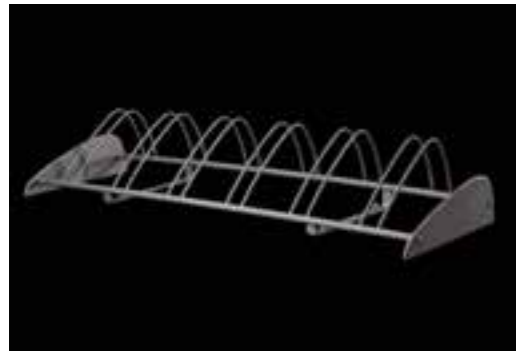
Layia page 192



Scilla page 270

BICYCLE RACKS

STEP-LIGHTS



Idesia page 96



Layia page 184



Salix page 244



Salix page 232



Salix page 233

CLOCKS

SIGNAGE



Carya page 42

Lilium page 112

Melia page 154



Scilla page 278

Scilla page 274



Melia page 156

Scilla page 280



Layia page 188

Layia page 194

NOTICE BOARDS

BUS SHELTERS



Carya page 40



Lilium page 113



Layia page 188



Carya page 44



Lilium page 110



Scilla page 284

In addition to catalogues, we provide our customers a series of digital tools – accessible through the company website – such as:

- Data sheets
- DWG
- Installation instructions
- IES files
- Project's presentations
- Photos
- Catalogues
- Brochures



Neri.biz website – thanks to a completely responsive design – is optimized for desktop computer, laptops and mobile devices.



There are detailed descriptions and images of all our products.



For each product you can download data technical sheets, DWGs, assembly instructions and IES files.



You can download PDF presentations that illustrate our latest projects around the world.



For each series of street furniture has been arranged a PDF presentation to integrate the photographic references of the dedicated catalogue.

NERI S.p.A.
S.S. Emilia 1622
47020 Longiano (FC) · Italy
T +39 0547 652111
F +39 0547 54074
www.neri.biz

NERI NORTH AMERICA INC.
1835NW 112th Avenue
Suite 176
Miami, FL 33172, USA
T +1 786 315 4367
F +1 786 693 7763

NERI LIGHTING INDIA Pvt. Ltd.
(Subsidiary of Neri S.p.A. – Italy)
181 Evoma
14 Bhattaralli · K R Puram
Bengaluru · 560 066
M +91 97 4112 9203
T +91 80 3061 3658

Neri Branch office
DUBAI
NERI S.p.A. (DMCC Branch)
29-13 Reef Tower Cluster O
JLT - Jumeirah Lake Towers
P.O. Box: 5003348 · Dubai · UAE
T +971 4 448 7246
F +971 4 448 7112
M +971 50 650 7185

Projects | Street furniture
Editor: Neri S.p.A.
Design: Neri S.p.A.
Printed by: Pazzini Stampatore Editore Srl

Neri is a registered trademark.
The brands of the different collections are Neri S.p.A.
unregistered trademarks.
Neri protects its products, filing invention, trademarks
and design patents.

We reserve the right to make changes in design and technology for
the customers interest. Furthermore products may have different
characteristics for several countries.