

NERI

Custom-made projects
and restoration

Contents

Introduction

- 4 Company
- 6 Designers
- 8 Product range
- 10 Research and development
- 12 Fondazione Neri and Italian
museum of cast iron (MIG)

Custom-made projects and restoration

- 17 Custom-made projects
- 125 Restoration projects
- 183 Reproduction projects

This is an interactive PDF,
the different sections of the
publication can be navigated by
clicking on the section titles in
the contents page. To come back
to this page, click on the Neri's 'N'
positioned top right in every page.

Since 1962, Neri has been a symbol of excellence in high-end outdoor furniture and lighting systems in Italy and worldwide. Neri is the lighting standard in over half of the Italian municipalities and many prestigious mixed-use, hospitality, residential, and retail developments worldwide. The Neri message has always been and continues to be about innovation and technological research, in keeping with the same passion and craftsmanship that characterised their origins.

Founded by Domenico Neri, artist, sculptor, and attentive observer and interpreter of the aesthetic and functional demands of cities, Neri promotes decor and performance through its Heritage and the Contemporary ranges. Restoration activities, reproductions, bespoke products as well as partnerships with architects, lighting designers and energy managers are part of the offering of a company with a presence in over 100 countries.



The approach attentive of collective needs, the attention to technological innovation, the use of new materials, the dialogue with the surroundings, are the basis for an effective design that focuses on places, people and the best way to experience the social and environmental context.

Neri designers have always been shaping dreams, often daring, always innovative dreams. Starting from the founder, Domenico Neri, whose love for art, urbanism and decoration have become the principle of an elegant style, which is present today unchanged in many countries around the world. Many and various designers have worked with us over the years, some of them were successful designers, many of them were young people, all eager to exceed the records achieved and to contribute to enhancing our surroundings, along with Neri distinguishing excellence and style.



Domenico Neri



Yves Corminboeuf



Pietro Zulian



Franco Zagari



Emo design



Alfredo Farnè



Studio Brunetti e Filipponi



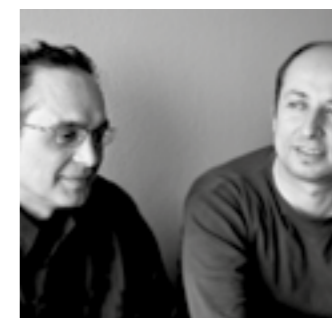
Studio ATA



Gianni Vianello Vinci



Iosa Ghini Associati



MZDS_Manzi e Zanotti



Makio Hasuike



Gabriele Pezzini



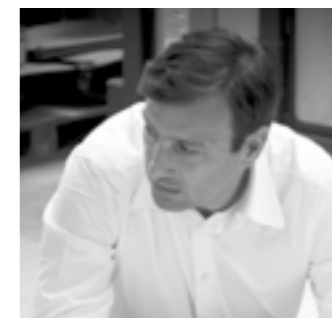
Paolo Portoghesi



Baroni & Valeriani Architetti



Studio Lepreti



Marco Casamonti



Italo Rota

Neri offers three product categories designed to improve and enhance our surroundings: lighting, street furniture and structures.

Unique families of products are designed to speak the same aesthetic across all three categories allowing for a cohesive and harmonious site plan. Neri offers both the Contemporary range, conceived with prestigious designers, as well as the Heritage range derived from the experience and classical tradition of our town and city centres. In addition to the collection in our catalogues, company know-how and experience allow Neri to work with designers on product modifications, customized design services and restoration, reproduction and preservation of historical elements that have been enhancing our cities throughout the centuries.

Lighting



Catania – IT



Sperlonga – IT



Cesenatico – IT



Dorado – PR



Baku – AZ



Bologna – IT

Street furniture



Peglio – IT



Meridian – US



Longiano – IT



Paris – FR



Taranto – IT



Portland – US

Structures



Doha – QA



Hong Kong – CN



Cannes – FR



Sperlonga – IT



Mazara del Vallo – IT



Barraquitas – PR



Modelling department



Painting facility



Bespoke hand-painting



Goniophotometer

NERI

Custom-made projects
and restoration

Neri has created two specific divisions for custom-made projects, restoration projects and reproductions projects. These specialised departments are structured and organised so as to favour flexibility when designing and realising bespoke solutions.

Neri provides architects, designers, lighting designers and municipalities with technical and cultural know-how (thanks to the valuable cooperation with Fondazione Neri) and testing and simulation laboratories to prepare prototypes and then produce the resulting products. In the modelling department, true art masters create the models and moulds needed to create new products or to reproduce and restore original ancient artefacts. Colours often play an important role in product customisation. Thanks to an extensive painting facility, Neri can meet all design needs and paint products according to our clients' requests, with high levels of quality and flexibility. As for lighting design, in Neri's laboratories, mechanical and thermal resistance tests, IP tests, efficiency tests etc. are carried out on both new and historical lighting fixtures being adapted during restoration and reproduction operations. All products are certified to the most recent standards.



NERI

Fondazione Neri and Italian
museum of cast iron (MIG)

Neri Foundation is a non-profit organization created in 2005. Since 2010 it is officially recognised by the Italian state.

The Foundation curates a unique collection. It researches the past and present and identifies trends that will shape the city's future regarding the life quality and the possibility for urban spaces to promote social relations, with their layout and furnishings.

Neri Foundation manages the Italian museum of cast iron (MIG) with its three exhibitions and its Documentation Centre. The collection consists mainly of street lamps from different Italian and European cities, produced between 1800 and the early decades of 1900, fountains and benches, railings, wall brackets, door lintels, knockers and stone posts. It also has vintage catalogues and photos, thematic books and modern images within its archive.

The Neri Foundation profile is completed by permanent and temporary exhibitions, collaborative initiatives with cultural institutions and research centres, exchanges with universities and corporate museums at national and international level.



Custom-made projects and restoration

17 Custom-made projects

125 Restoration projects

183 Reproduction projects

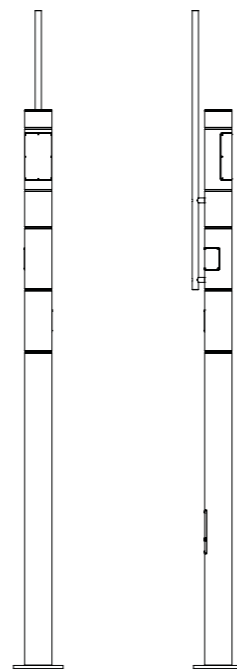


Custom-made projects. New projects from around the world stress the vital importance of street furniture in defining and enhancing urban environments. More and more architects and lighting designers create bespoke solutions that are pivotal to architectural projects. Products are no longer chosen from a standard catalogue, they are new and tailor-made on the basis of each designer's idea. Some years ago, Neri created a Custom-made products division in order to meet the needs of those designers and support them in all the design phases leveraging its know-how and passion.



Mariah, in the United Arab Emirates, is an island that is home to residential and commercial areas with luxury centres and hotels. Thirteen bridges connect perfectly every area to major access transport routes and to the capital, Abu Dhabi.

Neri took part in this great project creating the promenade lighting along the sea at the foot of the skyscrapers. Alphard was born with this project. It is a simple, linear pole with smooth lines that, once painted in white, fits in perfectly with the futuristic glass structures.



ABU DHABI

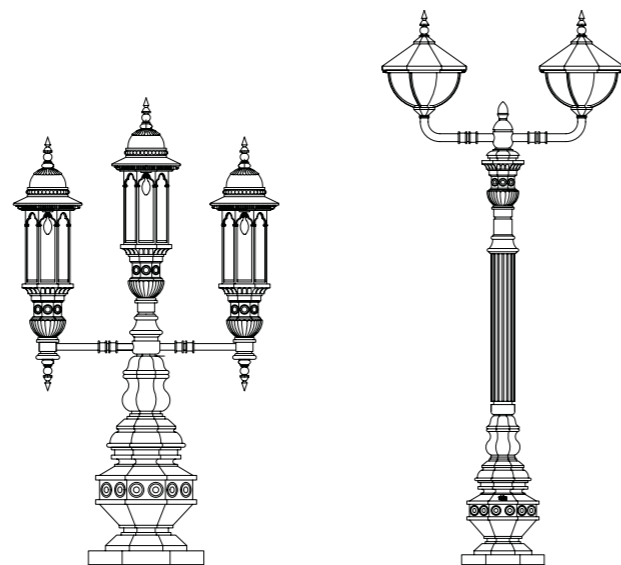
United Arab Emirates





The Emirates Palace in Abu Dhabi is one of the most luxurious hotels in the world; it combines Arabian splendour and technology to offer a magical and memorable experience. The golden hotel contrasts with the fresh and verdant gardens, the silver fountains and the blue sky. The main building is a kilometer in length, and gardens and adjacent areas extend to 100 acres.

For such a unique place, Neri has designed and manufactured 800 bespoke lamp posts. Moulds for columns and lanterns have been made following the client's requests. A complex lighting system, composed by different lamp posts and luminaires, illuminates promenades, terraces and paths making this a project of great international resonance.



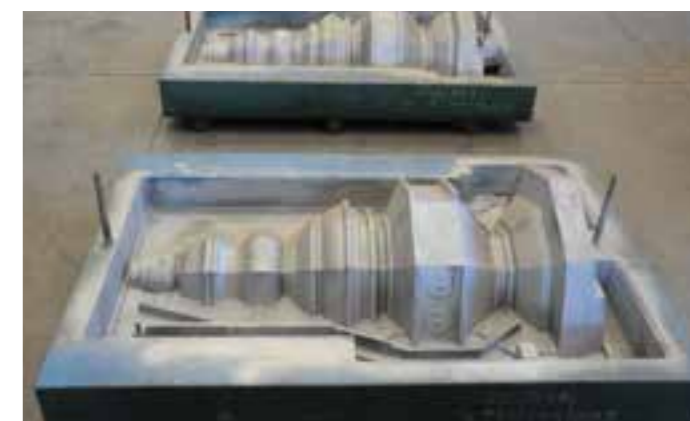


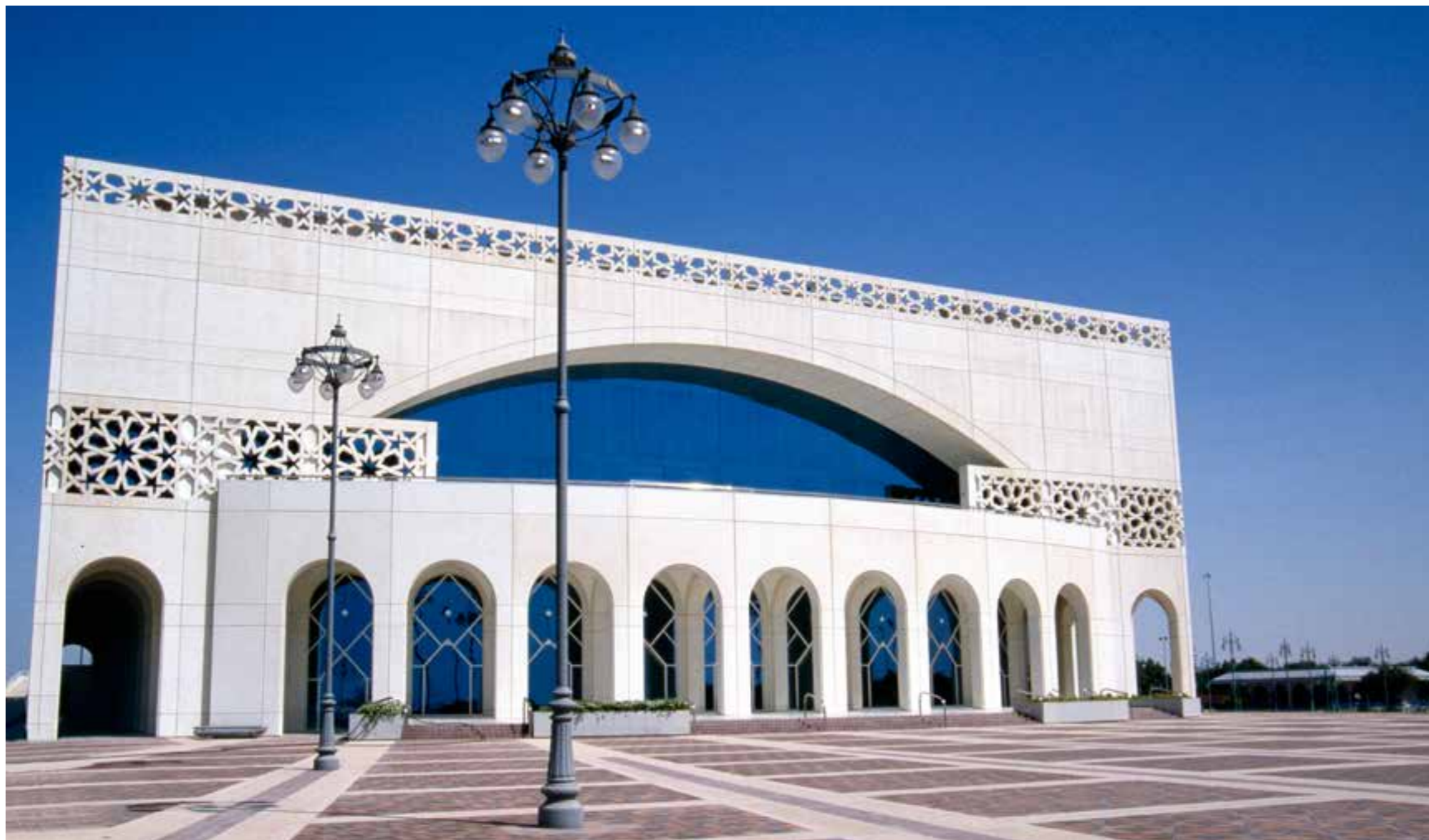
ABU DHABI

United Arab Emirates



In order to cast the posts, Neri designed and built various models: large-sized decorated models mounted on big supports.





For the Al Raha Theatre in Abu Dhabi, a circular-shaped six-light top has been created, reminiscent of the traditional chandeliers found in all important theatres.





Cinecittà World, near Rome, is the first theme park about motion pictures in Italy. The sets were designed by Oscar-winner Dante Ferretti. Neri was asked to work on all thematic areas and to make specific products for each set. In the spectacular park entrance, the scriptwriter's homage to the 1914 colossal film *Cabiria*, and the ancient Roman ruins, Neri modified Alphard, whose linearity fits in well with very emotionally-intense environments.



CINECITTÀ

Italy



In the childrens' area, a multi coloured apple-shaped light fixture was created: an original way to light play areas for kids.



CINECITTÀ

Italy



In the Far West zone, where there is a copy of the sets of *High noon*, music by Ennio Morricone. Neri made its wooden posts and added a Sheriff's star to the swan neck bracket.



CINECITTÀ

Italy



The light post in the sets of *Gangs of New York* is a copy of the historical posts which used to light the Big Apple in the 19th century. Thanks to the images contained in the Fondazione Neri's historical archives, Neri created this 19th century-style cast iron post with a LED luminaire.





EXPO MILAN

Italy



For Milan's recent Expo Neri provided furniture and lighting for the amphitheatre area, the place where official ceremonies and shows took place. It is during the night that this area presents herself in the most charming way, when our lighting furniture, designed specifically for this great event, creates alluring settings.

Neri also created Syrma Column for the large area in front of the stands: lighting totems on all the four sides fitting 1800 LEDs to offer a 360-degree lighting. These are 42 extruded aluminium columns, designed to spread a spectacular light which creates a comfortable atmosphere.





At Expo, four installations designed by Makio Hasuike were located in the green area in front of the Amphitheatre. Their name, Equiseto, reminds of an officinal herb, well-known for its beneficial properties since the ancient times. These 7 meter-high structures express the strength of life and vegetal energy. Their RGB LEDs spread light with variable intensity and colours.







In Doha, the capital city of Qatar, a new city is springing up: Lusail. This city is designed for 250,000 inhabitants and will include two marinas, residential areas, seaside resorts, shopping centres and other luxury activities. In 2022, Lusail will host some of the matches of the World Football Cup. Neri used its Light 37 device on a two-light post designed for this new city.





BAKU

Azerbaijan



Baku, the capital city of Azerbaijan, hosted the “1st European Games” in 2015. The event organisation caused a deep urban transformation.

Buildings were constructed designed to host competitions being built, together with skyscrapers and even long boulevards on the seafront, which are in ideal continuity with the ones built at the beginning of the 20th century, based on the European model. light and decorate these piers.





SALERNO

Italy



Alfredo Farné designed for Salerno Genus series, composed at a cast-iron lighting post and bollard, whose unique and elegant torsion leads from the ground to the sky, towards the light.



**GRADO
MARTIN**

Italy
Slovakia



Genus (see previous page) was really successful and used also in the cities of Grado and Martin in Slovakia, where Genus lamp post is used without its base.



MIAMI

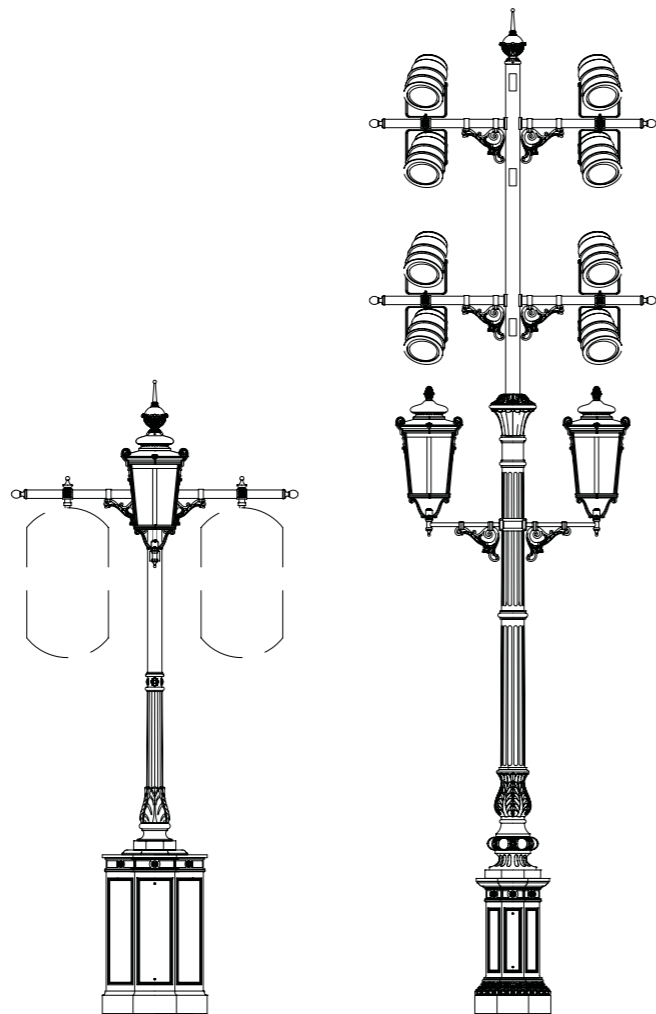
United States of America



Miami chose Genus bollards to manage traffic in some shopping centres.

For a large park in Shanghai, the client requested Neri the creation of 104 cast iron posts for decorative lighting with circular lanterns. The post was also designed to house large speakers and a double line of projectors for effect lighting.

The team at Neri designed the post with a large base to hold large electronic equipment. In our modeling department, models were built for the foundry that combined the pieces, and lastly in the paint shop the final output was painted with special colors required.





GAMBETTOLA

Italy



The project for the city of Gambettola is an example of a bespoke product based on a request from Studio 2P Architettura from Lucca. For lighting design reasons, the extruded posts were modified, made higher and integrated with Light Electra, which is normally used in the namesake system. Posts are also fitted with loudspeakers for communications during the events organised in the city.





Street furniture plays an important role in this project. The design required also the creation of a lighting bollard. It is used to light pedestrian paths and define urban spaces and represents a clear architectural value.



MISANO ADRIATICO Italy

In Misano Adriatico, architect Italo Rota commissioned an inclined post with sail and steel tie-wires. It is painted white and reminds of a boat's mast.



RICCIONE

Italy



Posts, bollards and seats designed by architect Italo Rota were designed and realised to light Via Dante in Riccione, one of the most important shopping streets of the Adriatic Coast.



RICCIONE

Italy



For the seafront of Riccione, Neri created a new series of products: one and two-light posts, bollards and litter bins. This range is characterised by cylindrical cast-iron modules with different diameters.





Architect Paolo Portoghesi designed a post for the city of Treviso. In cooperation with Neri, architect Portoghesi integrated his triangular-plan post design with Saiph lighting system tops and Light 34 luminaires.



The posts designed by Portoghesi were then selected by other designers for the towns of Zagarolo (image on the left) and Mazara del Vallo (image at the top).



For the seafront of Porto Sant'Elpidio, on the Adriatic Coast, landscape architect Franco Zagari designed a 12 meter-high dodecagonal post, which was chosen also by other cities, like Arceto (image on the left). Other versions of different heights were made for the seafront of Castiglioncello (image on the right), in Tuscany, and the railway station in Cesena (image bottom right).





City Walk represents a new dynamic outdoor concept. City Walk is not an enclosed space with its concentrated architecture, but a long avenue where city-dwellers can meet and find many high-end shops, wellness centres, clubs and restaurants and their internationally-leading brands and names. A true urban road, more than 350 meters long, lighted by Neri with modern posts, specially made for the City Walk project.



LONGIANO

Italy



In Longiano, a new underground parking garage and a surface parking lot were built. This modern place near the historical city centre aims at removing cars from the centre. Lighting was realised by Neri at the request of design architects, who asked for a simple four-light post to be fitted with Light 37.



CESENA

Italy



For Corso Cavour, in Cesena, a lamp post was created with a modern cast-iron base and arched bracket. The same post was then used for Siracusa (image on the right).



CESENA

Italy



For architect Marco Casamonti, Neri created a post with strong personality. These peculiar lamp posts have a winding shape and decreasing diameters. They were designed for Via Cesare Battisti, one of the most important roads in the city of Cesena.



PUTTEN

Holland



Square posts for Putten's square, in Holland. An essential design perfectly integrating with Light 801 luminaires, which have the same square shape.



FORLÌ

Italy

In Forlì, the architect asked for minimalist wall brackets with a very simple line.



CERVETERI

Italy



For Cerveteri, designers Manzi and Zanotti created a soft-lined wall bracket, only slightly projecting and originating from a cast metal connecting element mounted to the wall. Light 31 reminds of the same shape and creates a matching and harmonious product.



In the Aosta Valley mountains, Verres used the same product to light the narrow roads of this little village.



ZUMPANO

Italy



Architect Giampiero Lepreti designed an inclined rectangular post for a play ground in Zumpano; its top is made of two parallel planes and a flower-shaped lighting fixture.



CANAZEI

Italy



For Canazei, Dolomites, architect Pietro Zulian, from Gran Studio Villa Trieste, designed a triangular-shaped post with an bracket containing the coat of arms of the city. It is fitted with Light 24, specifically designed for this project.



GUBBIO

Italy



This large-sized cast metal post can be complemented with different types of tops. A lyre was chosen by the city of Gubbio.

CATANIA
OSIMO

Italy



This same post was used in Catania (image on the left), where it is fitted with a brackets, and in Osimo (image top right), with a swan neck top.



FERRARA

Italy

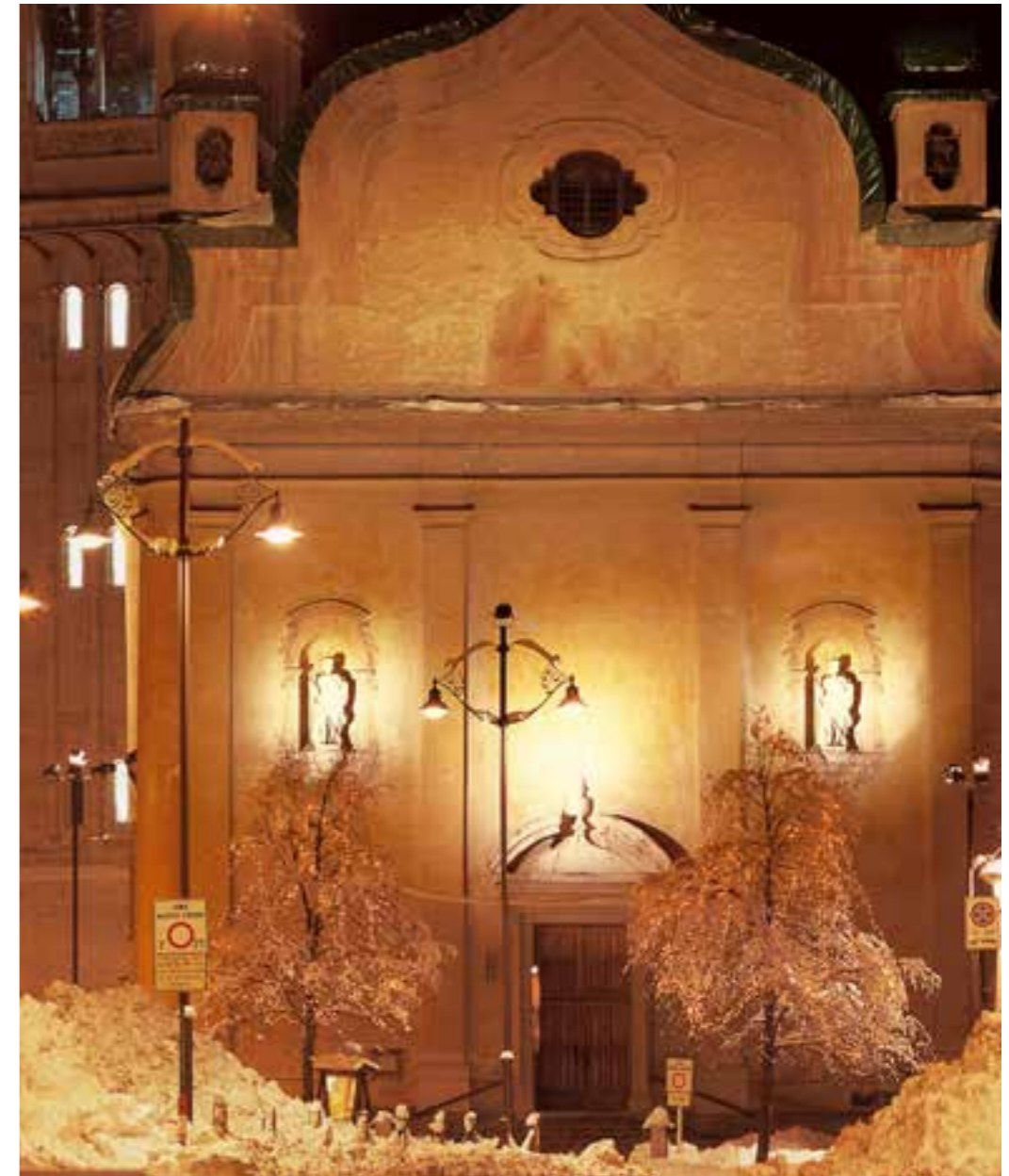


Neri created many different swan neck top types for specific projects. These requests are often based on existing similar models, which were used in the past in the same place and are now revised and modernised.

CORTINA

Italy

The swan neck top designed for Cortina d'Ampezzo is really original: its two-arm version has an unusual oval shape.



FLORENCE

Italy



Neri was commissioned to carry out the studies to light the hills surrounding the city of Florence. A revised product was created: it reminds of the original iron brackets and the traditional flat lighting fixture, the bracket is essential, the luminaire is fitted with new technologies and its design has been modernised.



**DELFT**

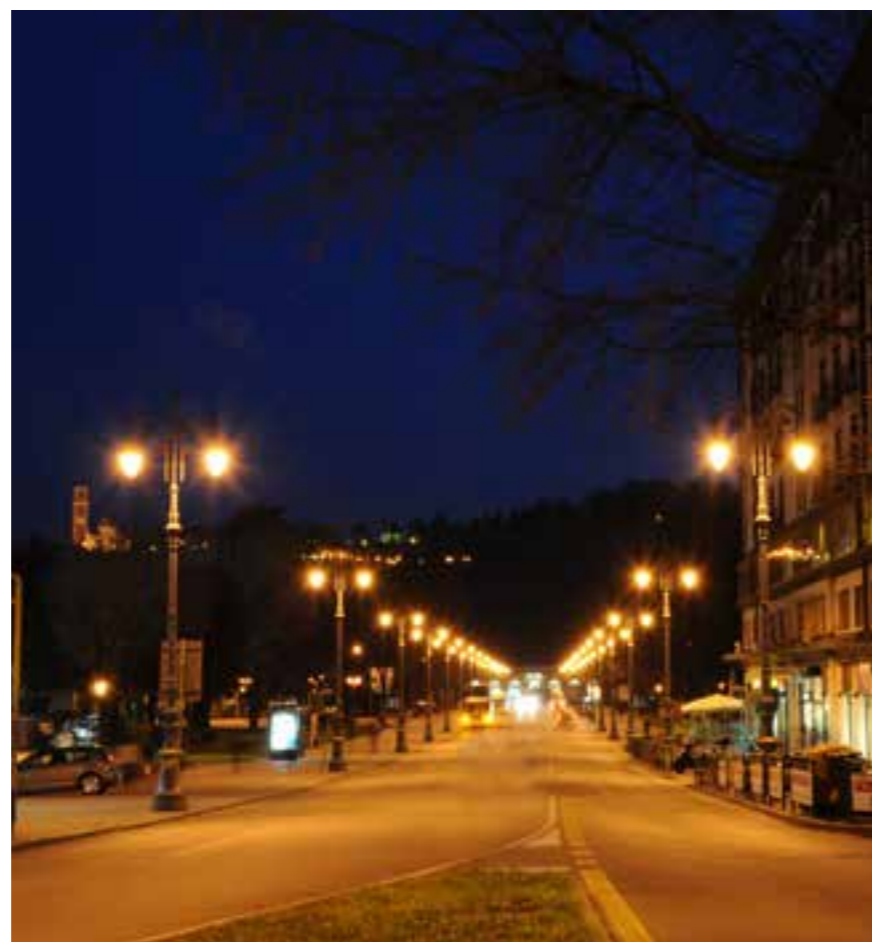
Olanda

For the famous Delft market square, the same post base was used as in Vicenza (next page), but the traditional winding swan neck tops were replaced with three linear brackets, which are more suitable for Dutch architectural models.





For the huge Viale Roma in Vicenza, Neri realised its biggest cast iron post. It is a 9 meter-high, double swan neck bracket, made up of various elements including floral decorations, fruits and grooves.



Designers really like this post, which has often been chosen to light large squares and avenues, for instance in Longiano (image on the left) and Toremaggiore (image on the right).

VICENZA

Italy



For Vicenza's central streets and monumental buildings, a 130 cm-long (51 inches) cast-iron shelf was created and then chosen also by the cities of Longiano (image at the top) and Erice (image on the left).



**GRESSONEY
LA TRINITÉ**

Italy



Neri has often made wooden posts for mountain areas. This natural element perfectly integrates in landscapes where wood is a significant presence.

TARVISIO

Italy



Neri's wooden posts may have different sizes and be fitted with a single lamp and a swan neck top. In Tarvisio, a cycle path was lighted with 360 cm (142 inches) wooden posts, with a steel arm to support the lighting fixture.

GIGNOD

Italy



Designers often request a swan neck top customised with the coat of arms of the city. Neri has made many symbols of this kind, which are particularly valuable from an aesthetic point of view.

MADONNA
DI CAMPIGLIO

Italy

In Madonna di Campiglio, the symbol on the swan neck top is a bear.



**CATANIA**

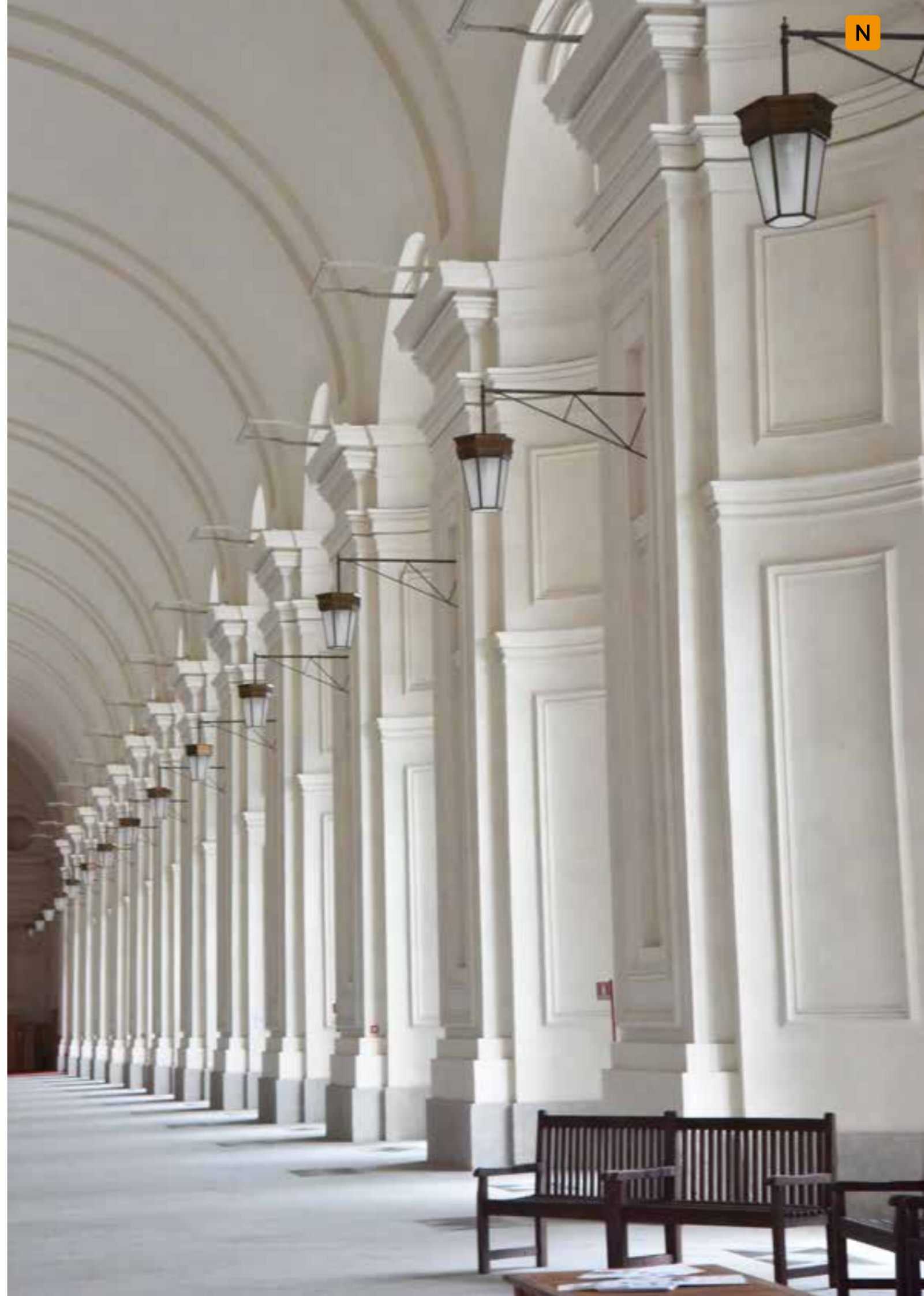
Italy

A classic 130 cm (51 inches) wall bracket was created for Catania, and it was used also in other cities, such as Castel San Pietro (image on the left) and Ostra Vetere (image on the right).





For the Orangery of the Venaria Reale Palace, near Turin, Neri made wall brackets and large hexagonal brass luminaires.



**MERIDIAN
FARMINGTON**

United States of America



Special posts were designed for the Station Park malls in Farmington and The Village in Meridian (U.S.), they include a flower box support with integrated automatic irrigation system, to solve the serious problem of flower maintenance. Special modified bicycle racks were installed in both malls.



IRVINE

United States of America



In Irvine, U.S., the architect asked for the Tabit system's wall bracket to be extended.

ARSIÈ

Italy



For Arsiè, Neri created an original solution using the base from the Alcor system with three different brackets fitting Light 37.

COSENZA

Italy



To light the city of Cosenza, architect Tiziana Pulice designed a luminaire inspired by the history of this city and the legend of Alaric, King of the Goths, who died here after the Sack of Rome. His helmet inspired this luminaire.

SERVIGLIANO
PESARO

Italy



These steel benches with wooden seat and backrest were designed by designers Manzi e Zanotti for Servigliano (image on the left) and Pesaro (image on the right) to be used all around the city, in both parks and modern and historical squares. Thanks to their sober line, they can perfectly fit in, in any urban context.



PARDUBICE

Czech Republic



Amongst the heritage products for specific projects, we find bollards and other street furniture elements. For Pardubice, Czech Republic, a thin hexagonal cast-iron column has been created.

QUARGNIENTO

Italy



For Quargniento, hexagonal bollards were requested; they remind of a true classic column.



This rectangular step-light with LEDs was designed for Vittorio Veneto by architect Claudio Bertorelli. Its aim is to light and mark the edge of the channel which runs through the city, thus marrying safety and design. For Vittorio Veneto, architect Bertorelli designed the steel tourist signs with different colours for different tour routes and descriptions of the main sights of the city.





Restoration projects. Right since the beginning of last century, our cities have been characterised by the variety and beauty of street furniture (mainly made of cast iron). Furniture is important to define urban spaces and these objects have become a significant element of the identity of open-air museums: our cities. Starting from the 80s, many cities decided to bring these forgotten artefacts and their history back to life. Thirty years ago, Neri founded a Restoration division with the aim of supporting municipalities, art and culture offices and designers in this journey to re-discover their identities. At Neri's, restoration means connecting what is cut off, re-creating the identity of urban spaces, their uniqueness and harmony by caring for each and every object. Neri's technical know-how and valuable cooperation with Fondazione Neri - Italian Cast Iron Museum - contribute to this productive cultural journey. Thanks to the museum archives, it is possible to document the history of artefacts being restored, from the original drawings to their installations along the last centuries.

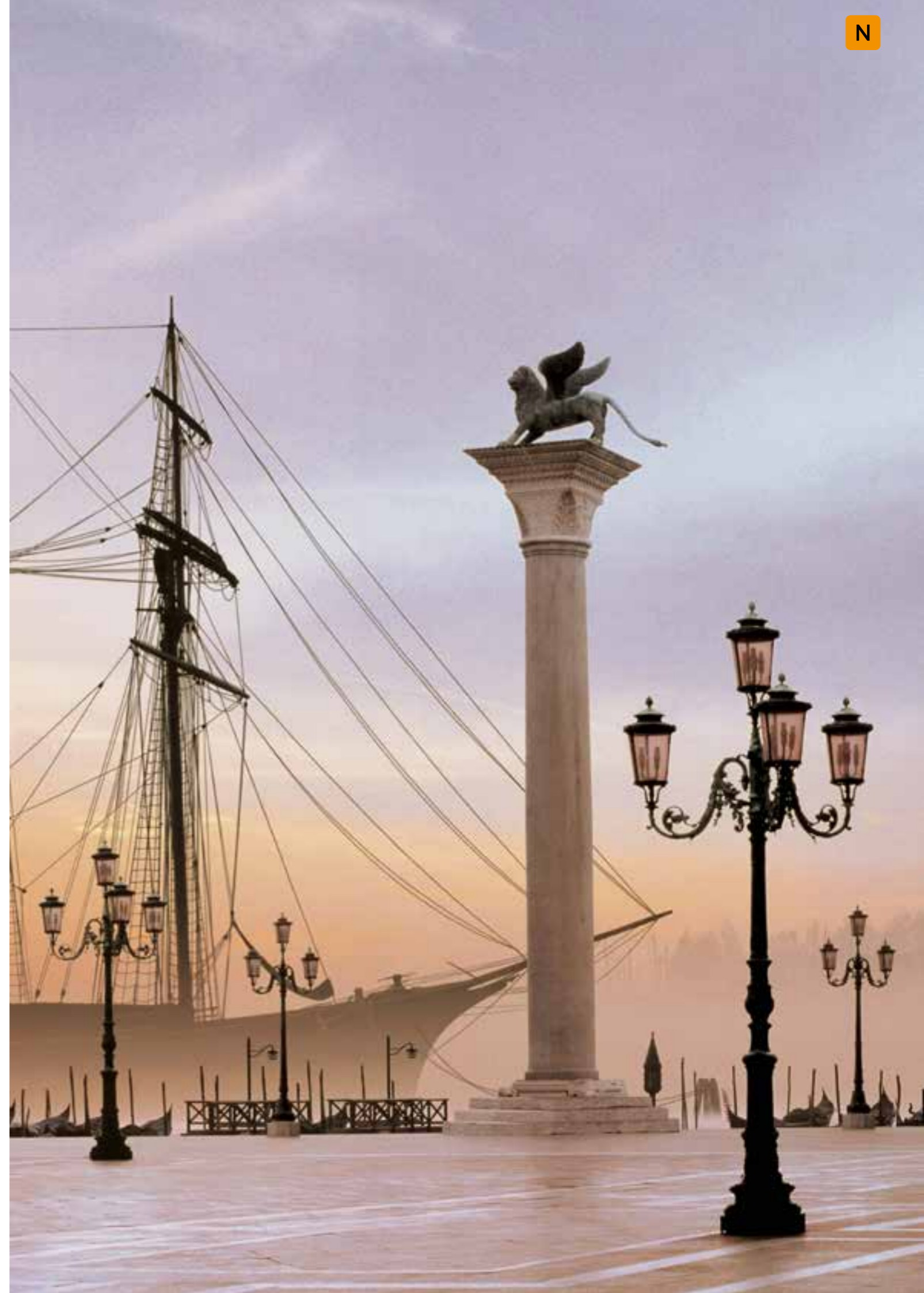


VENICE

Italy

Venice is one of the few Italian city that still has its original cast iron lamp posts and brackets. These are cast iron posts with one or more lamps, different sizes and floral decorations: their unique shape is typical of the Veneto region.

For over 20 years Neri has been restoring this rich heritage, which is now part of the urban architecture of Venice. From the monumental posts in Piazza San Marco to the three-light posts of the Grand Canal, the single-light posts along the narrow streets and the big post/beacon light of Punta della Dogana.



VENICE

Italy





VERONA

Italy

The huge Piazza Brà, near the famous Roman arena, is lighted by candelabras and tops with their rich whorls. In Piazza delle Erbe, the market square, posts are different and their tops are decorated with grotesque figures. Finally, the banks of the river Adige are lighted by one-light cast iron posts without any decoration.

The restoration performed by Neri brought these artefacts back to their original magnificence.





MILAN

Italy

The world-wide known theatre La Scala in Milan, with its 4 posts designed by the famous architect Beltrami in 1914 and cast by the renowned foundry Lomazzi.

After long years in a depot, the posts are now decorating and lighting the square again. The posts produced by the ancient foundry Pignone of Florence were restored and fitted back to decorate Porta Venezia's balustrades. Both types were specifically designed for Milan and they have never been copied in any other city.



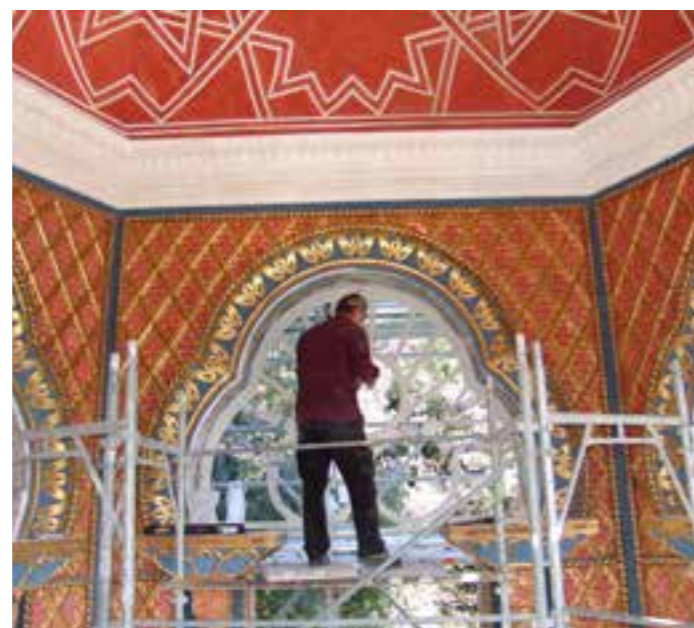


VILLA TORLONIA

Rome – Italy



In Rome, Neri undertook the difficult restoration of large steel and cast iron structures, columns, doors and windows, which were especially designed for the Serra Moresca, commissioned by the Princes of Torlonia. A place in ruins is now back to its original magnificence thanks to its architecture and stained-glass windows.



PARIS

France



Neri also worked in Paris, to restore the bronze posts and lanterns of the Louvre Museum courtyard, along the Court Carrée, near the famous glass pyramid.



PADUA

Italy



Street lamps which light Prato della Valle, one of the largest squares in Europe, are truly valuable for the city. They are an example of the type that used to be present in all squares in the 19th century. Thanks to Neri's restoration, the city of Padua was able to gather here all the posts that were still present in the city, thus creating a true open-air museum. The missing posts have been reproduced by Neri to complete the project.



BOLOGNA

Italy



The Montagnola is a very well-known area in the city: it is decorated with 50 cast metal posts, which were especially created for this place. They are unique pieces which characterised the aspect of a part of the city. Neri restored them with the support of Fondazione Neri, and was able to recreate all missing decorations, thanks to the same foundry which cast the original posts.



PERUGIA

Italy



Only three original posts are still present in Perugia. They were cast in 1870 and mounted along the main avenue, but they were dismantled after the Second World War. Neri recovered them and made a copy to be put next to the restored original one, in front of Palazzo Gallenga Stuart, seat of the University for Foreigners. Two of the restored candelabras are located in Piazza Italia, in their original position.



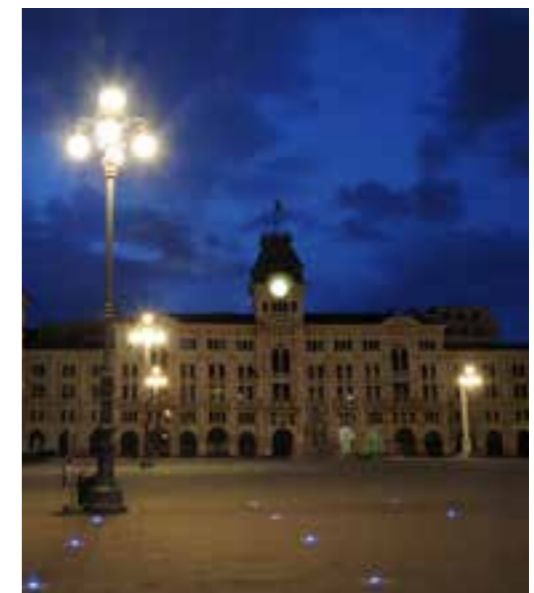
TRIESTE

Italy



Piazza Unità d'Italia has been modified several times over the centuries. Its current look and the Austro-Hungarian-style architecture stem from the recent full refurbishment it underwent: all the buildings and the original cast-iron posts were restored. Near the square, you can find the famous Audace pier, an access to the sea: its original posts were restored by Neri.





BERGAMO

Italy



Various post models were restored for the city of Bergamo. The most common is a swan neck top 7-meter post fitting a Light 23 lamp.



PISA

Italy



Neri restored the original cast-iron posts of Piazza dei Miracoli, a magical place, which were used in the early 20th century for the trolleybus and have now been turned into light posts with swan neck top and two Light 22 lamps.



FERRARA

Italy



Four posts were originally cast by the French foundry Siry-Lizard and placed in front of the Chamber of Commerce, near the Este castle. One of them was damaged by a car crash and it has now been reassembled and restored together with the other original posts. In addition to the posts, the wall brackets were restored and fitted with Light 22 luminaires.



MONTECARLO

Principality of Monaco



The Principality of Monaco entrusted Neri with the restoration and electrical adaptation of the lamps of the Palace of Montecarlo: brass lamps decorated with an elegant royal crown on the top.



SIENA

Italy



In Siena, Neri restored all the 1230 iron luminaires that light the city. Not only were they restored, but, subsequently to laboratory tests, they were integrated with an internal reflector and matt screens to improve their efficiency and visual comfort, therefore saving up to 65%. There were two models in this city: the most common is a square lantern, but in Piazza del Campo the large cylindrical lanterns were restored.





AUCKLAND

New Zealand



The most distant restoration ever performed by Neri. On the other side of the world, in New Zealand, Neri restored the 1930 English lanterns fitted in the War Memorial Museum's garden. These copper lanterns were in very poor conditions and patient and delicate work was needed to restore them and fit them with LEDs.



IMOLA

Italy



In 1927 in Imola, 4 monumental posts were fitted. They had been cast in Rome and were the exact copy of the posts located, in the late 19th century, around the Marcus Aurelius column and in front of Montecitorio, seat of the Italian Parliament, where they still guard the main entrance. They were dismantled and put in a depot 30 years ago and recently given to Neri to be restored.



FANO

Italy



Neri's restoration work also included the gilded wood and crystal chandelier of the Fano theatre.

PORTOFERRAIO

Italy



Amongst the various objects restored by Neri, it is worth mentioning these wonderful railings, restored in the Elba island and cast in the second half of the 19th century by the Torretta foundry of Leghorn. It is a valuable artefact showing the great mastery of artists who realised its decorations, which include human figures, faces and flower and fruit festoons.



1



2

For more than 50 years, Neri has restored a huge variety of lamp posts in Italy and abroad. In this last pages, we will briefly describe the various models which have been saved; they are all different and this confirms an impressive artistic creativity.

- 1 Avellino
- 2 Cavallino
- 3 Avellino
- 4 Fontana monumentale di Catanzaro
- 5 Loreto
- 6 Vibo Valentia
- 7 Lodi



3



4



5



6



7

OTHER PROJECTS

Italy



1



2

- 1 Livorno
- 2 Évian-les-Bains
- 3 Pavia
- 4 Città di Castello
- 5 Vigevano
- 6 Napoli
- 7 Lucca



3



4



5



6



7

OTHER PROJECTS

Italy



1



2

- 1 Montagna
- 2 Ancona
- 3 Ravenna
- 4 Sant'Arcangelo di Romagna
- 5 Ustica
- 6 Voghera
- 7 Foggia



5



6



3



4



7

OTHER PROJECTS

Italy



1



2

- 1 Rovigo
- 2 Arco
- 3 Pesaro
- 4 Asti
- 5 Novellara
- 6 Viterbo
- 7 Senigallia



3



4



5



6



7



Reproduction projects. Many historical lamp posts or furniture items from last centuries were destroyed during wars or replaced. Photos are often the only memory we have, but they can help us re-build the same urban furniture, unique to so many cities. Thanks to Fondazione Neri's rich historical archive, where street furniture from all around the world is documented, the Restoration and Reproduction divisions cooperated with public administrations to faithfully reproduce many historical lamp posts, thus recreating the urban environment which risked to lose its identity because of the lack of its characterising elements.

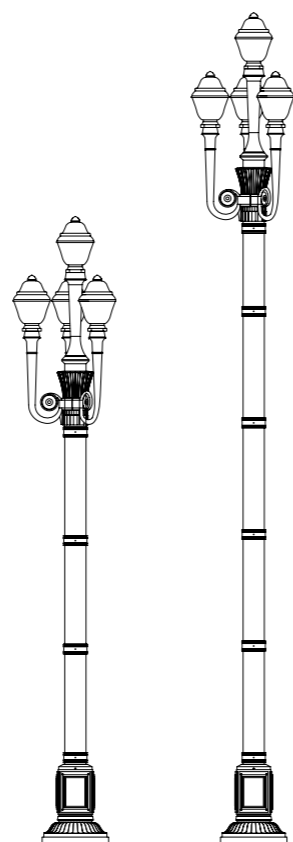


NICE

France

Forty-four posts were reproduced by Neri for Place Massena in Nice. These steel and cast iron posts have a very peculiar shape and were produced in the period between the two world wars.

Their reproduction was requested as part of the important project by architect Bruno Fortier to refurbish the square and reintroduce the rail tramway which revolutionised the urban road and traffic system. It was impossible to restore the original posts and fit them with the technical additions required by the project, so they were reproduced with the same shape, but a completely new design from a technical and maintenance point of view.





NICE

France

In Neri's laboratories, models were first designed and realised to cast the base, the capital and the tops.

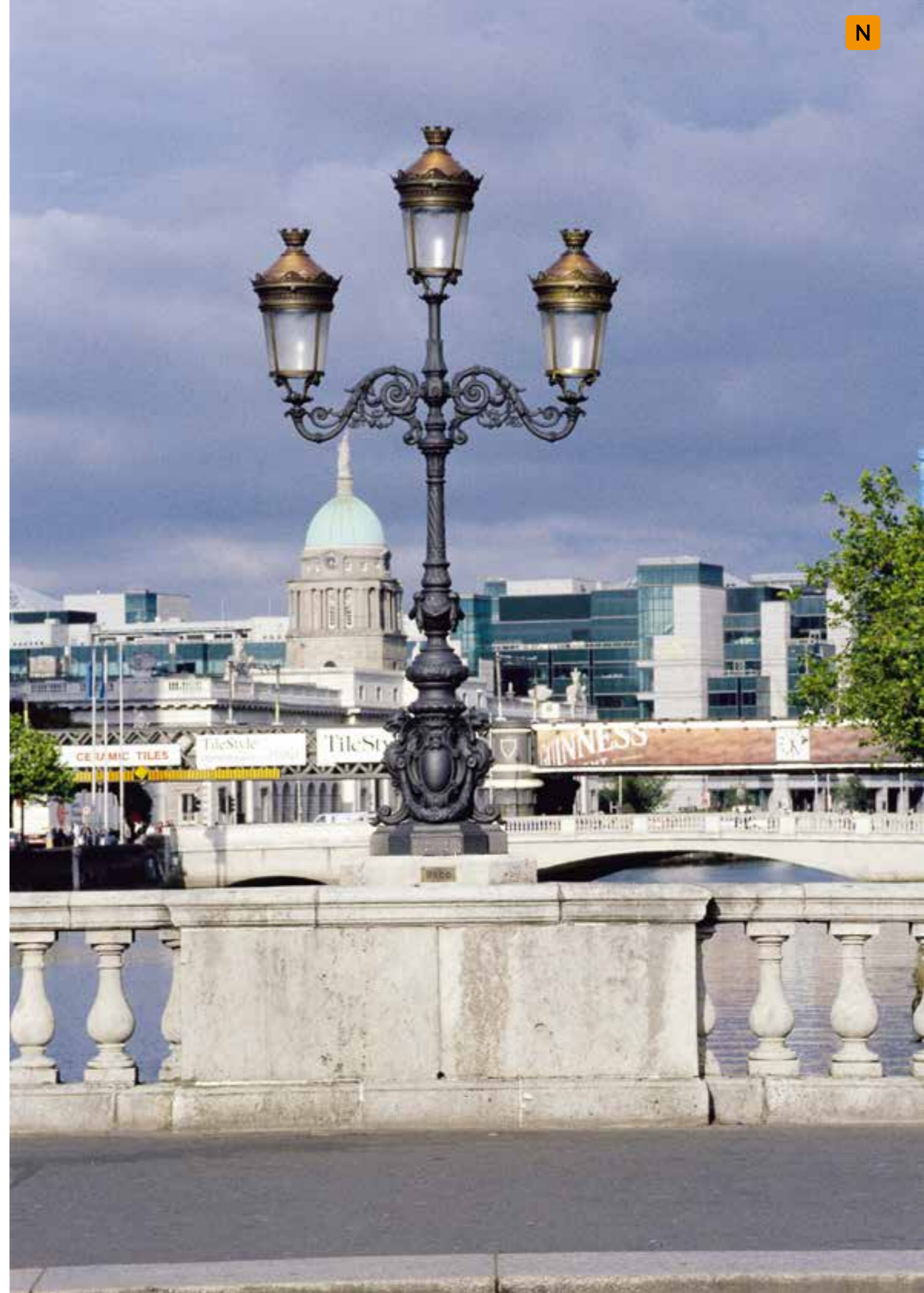


DUBLIN

Ireland

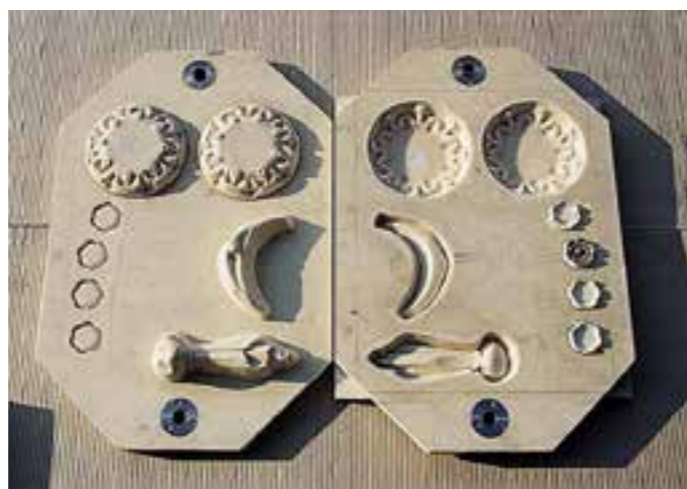
For the city of Dublin, Neri reproduced different types of lamp posts. The most ancient and magnificent are to be found on the O'Connell Bridge.

Eight of them are to be found on the bridge balustrades and three at the centre, on a monumental base. According to ancient catalogues from Fondazione Neri's archives (images at the bottom), these posts were cast in the mid 19th century in Paris.





They were carefully dismantled, each component was cleaned and, if in good condition, re-used to realise the new candelabras. In other cases, models were used to cast the missing or damaged parts.



Models created by Neri allowed to cast all the components of the posts. This operation was quite difficult and delicate, as the models had to be made of various parts because of the rich decorations of the posts.



DUBLIN

Ireland



The same procedure was followed for the monumental posts located at the centre of the bridge, which required the realisation of large-sized models.





Amongst the original models that are still present in Dublin, there is a single-light, two-height post, which was faithfully reproduced in several copies thanks to an original sample from Dublin. It was fitted with Neri's Light 801 luminaire.



The post with swan neck top which was reproduced for some areas of the city is particularly beautiful and impressive. The swan neck top shows an Irish shamrock; this post is fitted with Light 22 luminaire.

TURIN

Italy

Turin contracted Nerito reproduce several posts, lanterns and shelves: unique pieces witnessing the importance of a city which is deeply bound to the Kingdom of Italy.

For Piazza Castello, in front of Palazzo Madama, some elegant three-sphere candelabras with central lanterns were reproduced. The original models got lost, but the Fondazione Neri carried out an extensive photographic research and the progressive zooming revealed the details needed for the carver to create a copy of the original model.



TURIN

Italy



TURIN

Italy

For the Royal Palace and the square in front of Palazzo di Città, Neri reproduced the original cast-iron wall brackets.





The big "Empire" lanterns, topped with spheres, light all the most important squares of the city of Turin. They are fitted on high steel posts in groups of six and were reproduced by Neri using brass.



PORTICI

Italy



The Golden Mile project, which, during the Bourbon reign, used to connect Naples to the 122 villas of Portici, required the reproduction of the palace posts in a smaller scale, so as to create continuity all along the Mile. Neri created the models of the new post and reproduced 255 copies.



PRATO

Italy



In the 19th century, the huge Piazza di Prato, in front of the Cathedral, used to be lit by extremely elegant 5-light candelabras. They had been removed, but they were present in many historical pictures; thanks to a careful analysis of the images stored by Fondazione Neri, Neri was able to reproduce 12 posts to light the square according to the original project.



FLORENCE

Italy



Lamp posts are often characterised by their upper part, which is more visible, rather than by their decorations. The history of lighting design in the world includes several examples of tops with peculiar shapes, that are generally associated with specific cities and places. In Florence, traditional tops have had a very long and unusual spiral shape for more than 100 years.

AVELLINO

Italy



Curls, floral decorations and iron spirals characterise Avellino's post tops, which were reproduced by Neri in one-, two- and three-arm versions.



RIVA DEL GARDA ARQUÀ PETRARCA

Italy



You can find here two examples of reproduction of original iron wall brackets realised by Neri for Riva del Garda (image on the left) and Arquà Petrarca (image at the bottom).



LUGO

Italy



The reproduction of original wall brackets to light the cities and required during the design phase are common, they represent the memory of these artefacts. This is the case of the big bracket of the Town Theatre of Lugo, which was reproduced by Neri using an original bracket in good conditions (image on the left), at the time when the theatre was being restored. The beauty of these reproduced artefacts is often appreciated by other designers who include them in their projects: the Lugo's shelf was used also to light Via Etna in Catania (image at the bottom).





The Ducal Palace in Parma, designed by Vignola, is surrounded by the wonderful Ducal Park. Neri reproduced 200 copies of the single-light post which used to light this area in ancient times, and also reproduced the circular lanterns and the crowned sphere.





RAGUSA

Italy



For the Piazza del Duomo in Ragusa, Neri reproduced the original posts cast by Torretta foundry of Leghorn in the 19th century. A simple post with a peculiar twisted column inspired by classic shapes. The same type of post was then mounted in Piazza del Duomo in Acireale (image bottom left and right).

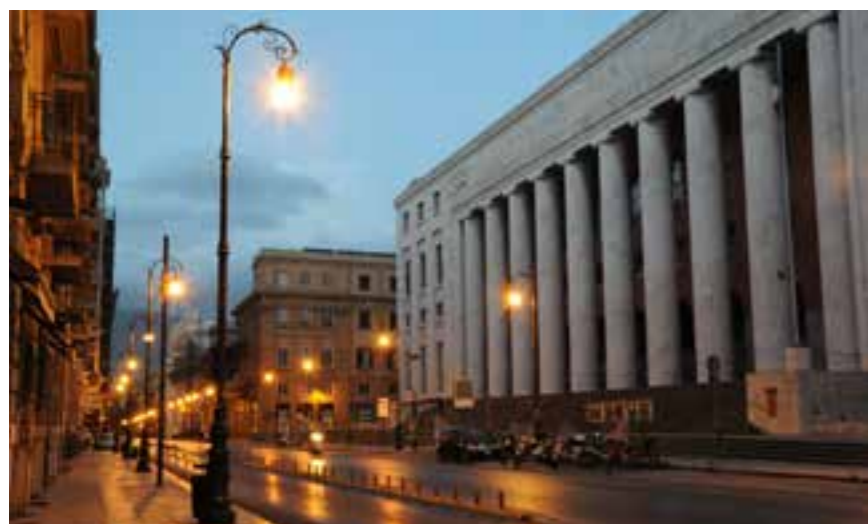


PALERMO

Italy



In the 19th century, a rail fence was built around the magnificent 16th century Pretoria fountain and it was lighted by cast-iron lamp posts produced by the Oreteia foundry in Palermo. Neri faithfully reproduced these posts. There are other post typologies in the city, designed by Basile: they were partially restored and partially reproduced in order to give the city a tidy and harmonious look.



GRADO

Italy



Between the late 19th century and the early 20th century, many cities were characterised by their lighting fixtures, which had various different shapes and sizes. Neri has reproduced many of these lighting artefacts. The suspended lighting fixtures of Grado era surely amongst the most interesting and peculiar.

BARI

Italy



For the city of Bari, Neri reproduced the lanterns fitted on 1920s iron-cast posts along the seafront. They were not just reproduced, but their shape was faithfully copied from the original; however, technologies, materials and the electrical system were modernised, with particular attention to low consumption and light diffusion.



As in the case of original candelabras and brackets, whose many models can easily be referred to specific cities, in the past, some cities were furnished using unique models of benches. Therefore, designers refer to the specific model of the city their project is intended for and commission Neri to reproduce the original bench. In Arco, for instance, there were two models.

Often the feet of benches are shaped like a natural element such as the branch of a tree. For the bench reproduced for Faenza using the original model, the branch is very knotty and thick (image at the top) unlike the bench made for Vicenza (image at the bottom) in which the branch is slim and slender.



In addition to catalogues, we provide our customers a series of digital tools – accessible through the company website – such as:

- Data sheets
- DWG
- Installation instructions
- IES files
- Project's presentations
- Photos
- Catalogues
- Brochures



Neri.biz website – thanks to a completely responsive design – is optimized for desktop computer, laptops and mobile devices.



There are detailed descriptions and images of all our products.



For each product you can download data technical sheets, DWGs, assembly instructions and IES files.



You can download PDF presentations that illustrate our latest projects around the world.



For each project has been arranged a PDF presentation to integrate the photographic references of the dedicated catalogue.

NERI S.p.A.
S.S. Emilia 1622
47020 Longiano (FC) · Italy
T +39 0547 652111
F +39 0547 54074
www.neri.biz

NERI NORTH AMERICA INC.
1835NW 112th Avenue
Suite 176
Miami, FL 33172, USA
T +1 786 315 4367
F +1 786 693 7763

NERI LIGHTING INDIA Pvt. Ltd.
(Subsidiary of Neri S.p.A. – Italy)
181 Evoma
14 Bhattaralli · K R Puram
Bengaluru · 560 066
M +91 97 4112 9203
T +91 80 3061 3658

Neri Branch office
DUBAI
NERI S.p.A. (DMCC Branch)
29-13 Reef Tower Cluster O
JLT - Jumeirah Lake Towers
P.O. Box: 5003348 · Dubai · UAE
T +971 4 448 7246
F +971 4 448 7112
M +971 50 650 7185

Projects | Custom-made projects and restoration
Editor: Neri S.p.A.
Design: Neri S.p.A.
Printed by: Pazzini Stampatore Editore Srl

Neri is a registered trademark.
The brands of the different collections are Neri S.p.A.
unregistered trademarks.
Neri protects its products, filing invention, trademarks
and design patents.

We reserve the right to make changes in design and technology for
the customers interest. Furthermore products may have different
characteristics for several countries.