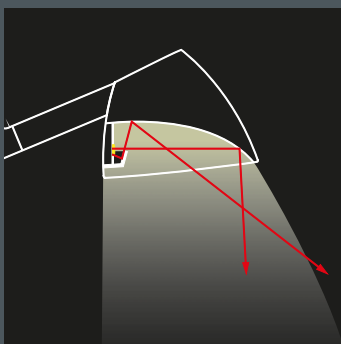




Metapark are pole luminaires with a unique design and optics that provide a high level of glare control. This luminaire series is developed to illuminate parks, pedestrian areas and cycle paths. Metapark blends into landscape architecture and harmonises with historical and modern environments. There are two mounting options – a pole bracket and a shorter arm. To protect nocturnal animals and insects, the luminaires are available with warm colour temperatures and an adjustable white light option.

Light from LED modules that are completely shielded is directed onto precise reflectors. With this indirect optic perfect glare control is achieved.



With gold anodised reflectors colour temperatures can be reduced.

The luminaire design is reduced to the essentials. Metapark with high efficiency and visual comfort is a contemporary alternative to a classic lantern. Luminaire configurations with different mounting heights offer a large scope for design.



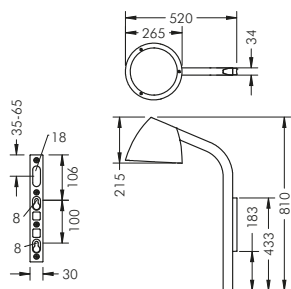
Metapark pole luminaires become distinct design features in landscape architecture and in urban environments.





Metapark with pole bracket

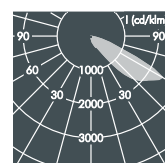
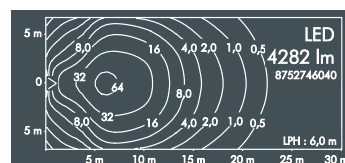
With highly efficient LED modules, integral temperature monitoring device, CRI: > 80, Colour tolerance: 2 SDCM
 Service life: L80/B20 > 50 000 h
 protection class I or II, IP65 \blacklozenge \blacktriangle \blacktriangle , IK08
 windage area AW 0.168 m²
 corrosion-resistant die cast aluminium housing AlSi12, polyester powder coated, highly efficient aluminium reflector or PMMA lens (Street Optic), all exterior steel parts are stainless steel, tempered safety glass, silicon gasket, closure with 3 stainless steel screws, for installation on poles \varnothing 60 - 100 mm: 2 cylinder screws M8, spacing 100 mm, M20 cable gland, with 8 m cable H07RN-F3G1, integral driver (AC/DC)



Metapark with pole bracket, asymmetrical beam

Part number	Colour	Weight	Light source	Luminous flux	Main beam angle γ
8 752 746 049	black	5.2 kg	1 x LED module 48 W warm white (3000 K)	4282 lm	60°
8 752 766 049	white				
8 752 756 049	silver grey				

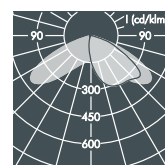
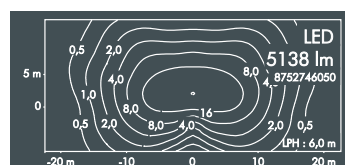
Part number	Description
... 029	Luminaire with gold anodised reflector



Metapark with pole bracket, lateral wide beam

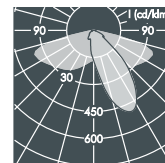
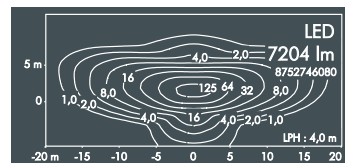
Part number	Colour	Weight	Light source	Luminous flux	Beam angle γ (FWHM)
8 752 746 059	black	5.2 kg	2 x LED module 24 W (48 W) warm white (3000 K)	5138 lm	C 0 - 180
8 752 766 059	white				C 90 - 270
8 752 756 059	silver grey				133°

Part number	Description
... 039	Luminaire with gold anodised reflector



Metapark with pole bracket, Street Optic

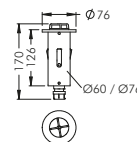
Part number	Colour	Weight	Light source	Luminous flux	Beam angle γ (FWHM)
8 752 746 089	black	5.2 kg	6 x LED module 8.8 W (53 W) warm white (3000 K)	7204 lm	C 0 - 180
8 752 766 089	white				C 90 - 270
8 752 756 089	silver grey				153°



Part number	Description
... 3	Protection class II luminaire
... 7	Luminaire with warm white LED module (2700 K)
... 8	Luminaire with warm white LED module (2200 K)
... 1	Dimmable luminaire (DALI)
... 2	Dimmable luminaire (DALI D4i)
... 3	Luminaire with Zhaga-18 interface

Accessories Metapark

\varnothing 60 mm	\varnothing 76 mm	Part number	Colour	Description
120 0 699 940	120 0 700 940	black	Post-top fitter for insertion, with Zhaga 18-interface, with 8 m cable, for control and monitoring of max. 4 luminaires with D4i LED driver	
120 0 699 960	120 0 700 960	white		
120 0 699 950	120 0 700 950	silver grey		

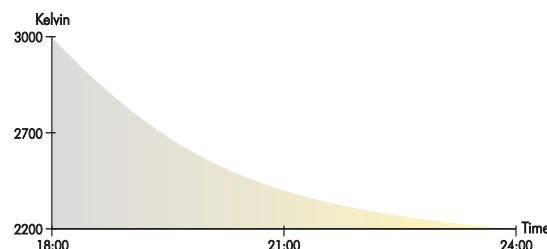


Metapark with pole bracket, Adjustable White, asymmetrical beam

Part number	Colour	Weight	Light source	Luminous flux	Main beam angle γ
8 752 742 149	black	5.2 kg	1 x LED warm white (2200 K) and	1772 lm	60°
8 752 762 149	white		1 x LED warm white (3000 K)	2141 lm	
8 752 752 149	silver grey		(max 28 W)		


Metapark with pole bracket, Adjustable White, lateral wide beam

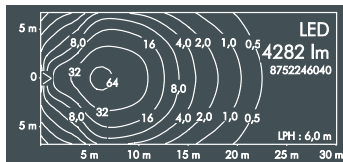
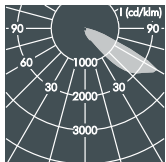
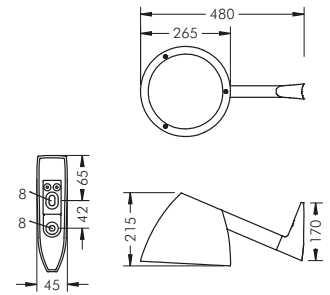
Part number	Colour	Weight	Light source	Luminous flux	Beam angle γ (FWHM)
8 752 742 159	black	5.2 kg	2 x LED warm white (2200 K) and	1839 lm	C 0 - 180
8 752 762 159	white		2 x LED warm white (3000 K)	2568 lm	C 90 - 270
8 752 752 159	silver grey		(max 28 W)		133°



With the Adjustable White light control colour temperatures can be adapted to the needs of sustainable illumination during the night hours and throughout the season.

Metapark with pole arm

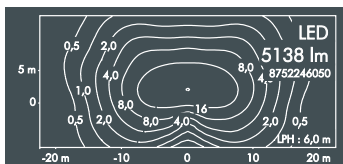
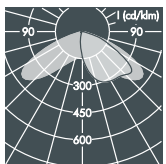
With highly efficient LED modules, integral temperature monitoring device, CRI: > 80, Colour tolerance: 2 SDCM
 Service life: L80/B20 > 50 000 h
 protection class I or II, IP65 , IK08
 windage area AW 0.148 m²
 corrosion-resistant die cast aluminium housing AlSi12, polyester powder coated, highly efficient aluminium reflector or PMMA lens (Street Optic), all exterior steel parts are stainless steel, tempered safety glass, silicon gasket, closure with 3 stainless steel screws, for installation on poles Ø 60 - 100 mm: 2 cylinder screws M8, spacing 42 mm, M20 cable gland, with 8 m cable H07RN-F3G1, integral driver (AC/DC)



Metapark with pole arm, asymmetrical beam

Part number	Colour	Weight	Light source	Luminous flux	Main beam angle γ
8 752 246 049	black	4.4 kg	1 x LED module 48 W warm white (3000 K)	4282 lm	60°
8 752 266 049	white				
8 752 256 049	silver grey				

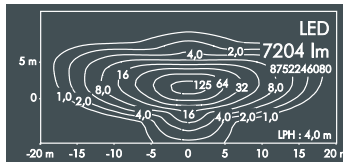
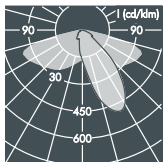
Part number	Description
..... 029	Luminaire with gold anodised reflector



Metapark with pole arm, lateral wide beam

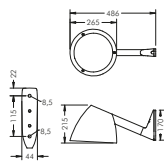
Part number	Colour	Weight	Light source	Luminous flux	Beam angle γ (FWHM)
8 752 246 059	black	4.4 kg	2 x LED module 24 W (48 W) warm white (3000 K)	5138 lm	C 0 – 180
8 752 266 059	white				C 90 – 270
8 752 256 059	silver grey				133°

Part number	Description
..... 039	Luminaire with gold anodised reflector



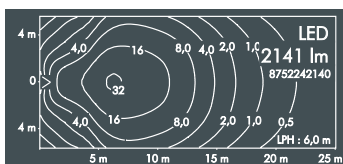
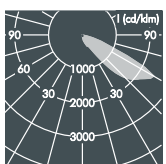
Metapark with pole arm, Street Optic

Part number	Colour	Weight	Light source	Luminous flux	Beam angle γ (FWHM)
8 752 246 089	black	4.4 kg	6 x LED module 8.8 W (53 W) warm white (3000 K)	7204 lm	C 0 – 180
8 752 266 089	white				C 90 – 270
8 752 256 089	silver grey				153°



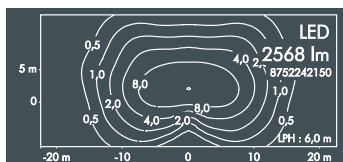
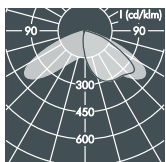
Wall luminaire

Part number	Description
... 3 ...	Protection class II luminaire
... 7 ...	Luminaire with warm white LED module (2700 K)
... 8 ...	Luminaire with warm white LED module (2200 K)
... 1 ..	Dimmable luminaire (DALI)
... 2 ..	Dimmable luminaire (DALI D4i)
... 3 ..	Luminaire with Zhaga-18 interface
... 1 ...	Wall mounted luminaire



Metapark with pole arm, Adjustable White, asymmetrical beam

Part number	Colour	Weight	Light source	Luminous flux	Main beam angle γ
8 752 242 149	black	4.4 kg	1 x LED warm white (2200 K) and 1 x LED warm white (3000 K) (max 28 W)	1772 lm to 2141 lm	60°
8 752 262 149	white				
8 752 252 149	silver grey				



Metapark with pole arm, Adjustable White, lateral wide beam

Part number	Colour	Weight	Light source	Luminous flux	Beam angle γ (FWHM)
8 752 242 159	black	4.4 kg	2 x LED warm white (2200 K) and 2 x LED warm white (3000 K) (max 28 W)	1839 lm to 2568 lm	C 0 – 180
8 752 262 159	white				C 90 – 270
8 752 252 159	silver grey				133°

Luminaires available in other colour temperatures upon request