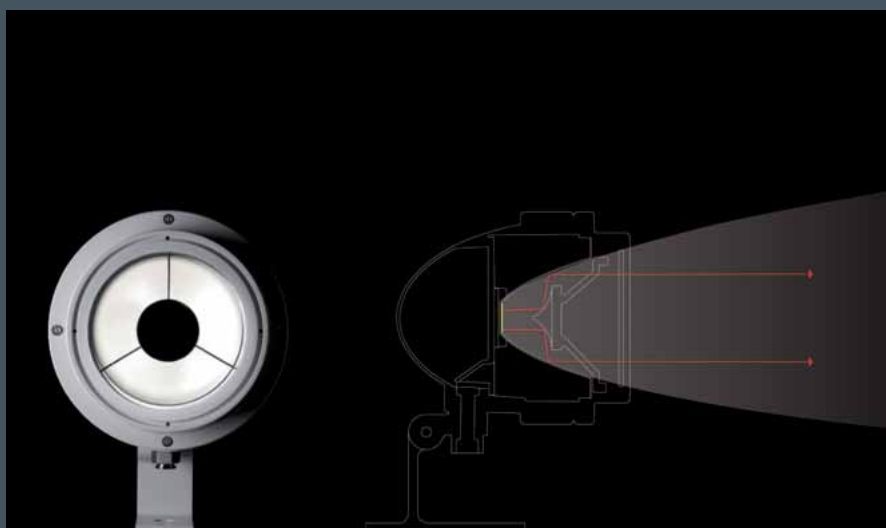




Nightspot luminaires are characterised by their exemplary design and technical precision. The product range has been extensively re-worked to take new high performance LED modules which offer a higher luminous flux and a wider range of optical systems. Rotationally symmetrical optical systems are fitted with secondary reflectors in order to reduce glare. For street and pathway lighting there is an optical lens with batwing distribution. An RGBW version rounds off the range with a useful product for colour changing installations.

Design: Roy Fleetwood

A compact LED gobo projector allows sharp-edged image projections of highest quality. The optical system is extremely efficient and can take a gobo and colour filter simultaneously.



The light emitted by the LED module is directed via a primary and a secondary reflector, thus avoiding glare from direct light. The result is optimal visual comfort without sacrificing efficiency.



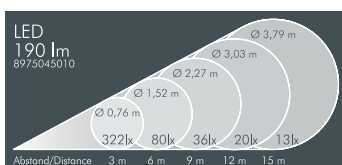
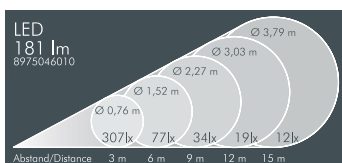
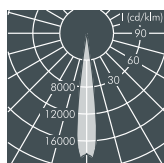
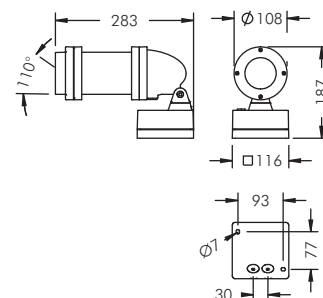
Montforthaus, Feldkirch/Austria
 Lighting design: Belzner Holmes und Partner Licht-Design,
 Stuttgart/Eschen, Liechtenstein

Nightspot pole luminaires can be used for the imaginative lighting of public spaces. They create uniform illumination or can be used for highlighting purposes. They can even be combined with gobo projectors in order to project images. The fixing system ensures a durable and robust installation, at the same time allowing the luminaires to be aimed as required.



Nightspot A Gobo

With high performance LED module,
 CRI: > 80, Colour tolerance: max. 2 SDCM
 Service life: L80/B10 > 50 000 h
 protection class I, IP65 \blacklozenge \blacktriangle \blacktriangle , IK08
 corrosion-resistant die cast aluminium housing AlSi12
 and aluminium profile, polyester powder coated,
 focusable projection lens,
 carrier for gobos and colour filters,
 all exterior steel parts are stainless steel,
 tempered safety glass, silicon gasket,
 closure with 4 stainless steel screws, mounting box:
 2 drilled holes \varnothing 7 mm, spacing 77 x 93 mm,
 articulated joint and tilt range 110°,
 luminaire housing can be turned through 360°,
 cable entry for 7 - 10 mm recessed or
 surface mounted cable, integral driver



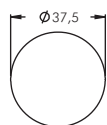
Nightspot A Gobo, 85 mm focal length

Part number	Colour	Weight	Light source	Luminous flux	Beam angle
8 975 046 019	black	2.3 kg	1 x LED module 19 W warm white (3000 K)	181 lm	14°
8 975 066 019	white				
8 975 056 019	silver grey				

Part number	Colour	Weight	Light source	Luminous flux	Beam angle
8 975 045 019	black	2.3 kg	1 x LED module 19 W neutral white (4000 K)	190 lm	14°
8 975 065 019	white				
8 975 055 019	silver grey				

Accessories Nightspot A Gobo Projector, 85 mm focal length

Part number	Colour	Description
129 0 451 000	yellow	Dichroic colour filter, internally fitted
129 0 453 000	blue	
129 0 457 000	red	
129 0 458 000	green	



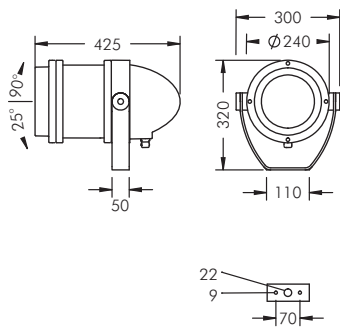
Part number	Example	Description
129 0 459 000	waves	Standard gobos \varnothing 37.5 mm
129 0 460 000	stars	
129 0 461 000	hatch	



LED (see page 247)

Luminaires available in 2700 K and other colour temperatures upon request





Nightspot B Gobo/RGBW Gobo

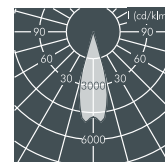
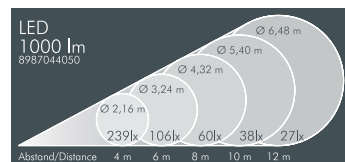
Monochrome: With high performance LED module, CRI: > 70, Colour tolerance: max. 4 SDCM Service life: L70/B20 > 50 000 h protection class I or II, IP67 , IK08 integral driver (AC/DC)

RGBW: With high performance LED module RGBW, protection class I, IP67 , IK08 external DMX-controller required, RDM compatible integral driver (AC/DC)

windage area AW 0.085 m², corrosion-resistant die cast aluminium housing AlSi12 and aluminium profile, polyester powder coated, focusable lense, carrier for gobos and colour filters, all exterior steel parts are stainless steel, tempered safety glass, silicon gasket, closure with 4 stainless steel screws, mounting bracket powder coated aluminium with tilt scale: 2 drilled holes Ø 9 mm, spacing 70 mm, 1 centre hole Ø 22 mm, tilt range 115°, M20 cable gland

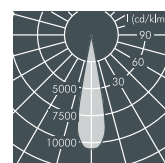
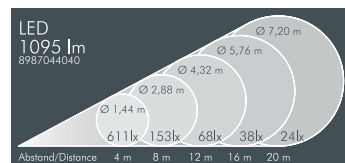
Nightspot B Gobo Projector, 63 mm focal length

Part number	Colour	Weight	Light source	Luminous flux	Beam angle
8 987 044 059	black	8.0 kg	1 x LED module 47 W cool white (6500 K)	1000 lm	30°
8 987 064 059	white				
8 987 054 059	silver grey				



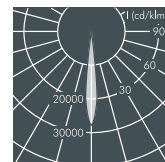
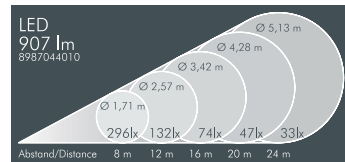
Nightspot B Gobo Projector, 85 mm focal length

Part number	Colour	Weight	Light source	Luminous flux	Beam angle
8 987 044 049	black	8.0 kg	1 x LED module 47 W cool white (6500 K)	1095 lm	20°
8 987 064 049	white				
8 987 054 049	silver grey				



Nightspot B Gobo Projector, 150 mm focal length

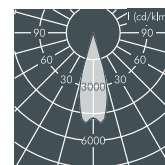
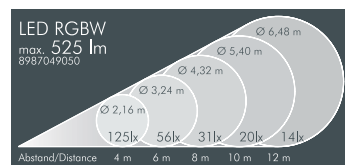
Part number	Colour	Weight	Light source	Luminous flux	Beam angle
8 987 044 019	black	8.1 kg	1 x LED module 47 W cool white (6500 K)	907 lm	12°
8 987 064 019	white				
8 987 054 019	silver grey				



Part number	Protection class I luminaire
..... 1..	Dimmable version (DALI)
..... 2..	Dimmable version (1-10 V)
	Protection class II luminaire
..... 5..	Luminaire not dimmable
..... 6..	Dimmable version (DALI)
..... 7..	Dimmable version (1-10 V)

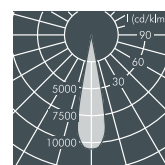
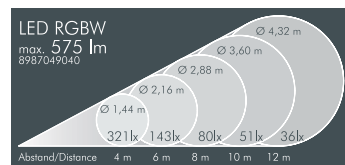
Nightspot B RGBW Gobo Projector, 63 mm focal length

Part number	Colour	Light source	Luminous flux	Beam angle
8 987 049 059	black	1 x LED module RGBW W = 6000 K (max. 38 W)	max. 525 lm	30°
8 987 069 059	white			
8 987 059 059	silver grey			
Weight 8.0 kg				



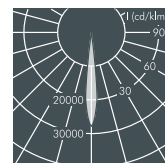
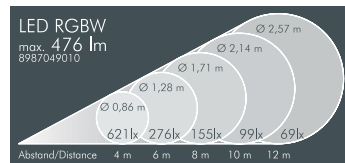
Nightspot B RGBW Gobo Projector, 85 mm focal length

Part number	Colour	Light source	Luminous flux	Beam angle
8 987 049 049	black	1 x LED module RGBW W = 6000 K (max. 38 W)	max. 575 lm	20°
8 987 069 049	white			
8 987 059 049	silver grey			
Weight 8.0 kg				



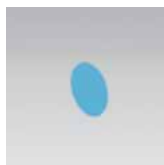
Nightspot B RGBW Gobo Projector, 150 mm focal length

Part number	Colour	Light source	Luminous flux	Beam angle
8 987 049 019	black	1 x LED module RGBW W = 6000 K (max. 38 W)	max. 476 lm	12°
8 987 069 019	white			
8 987 059 019	silver grey			
Weight 8.1 kg				



LED (see page 247)





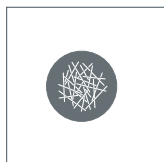
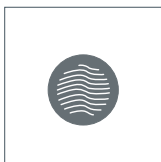
Accessories Nightspot B Gobo 63/85/150 mm focal length

Part number	Colour	Description
129 0 551 000	yellow	Dichroic colour filter
129 0 557 000	red	
129 0 553 000	blue	
129 0 558 000	green	



Accessories Nightspot B Gobo/RGBW Gobo

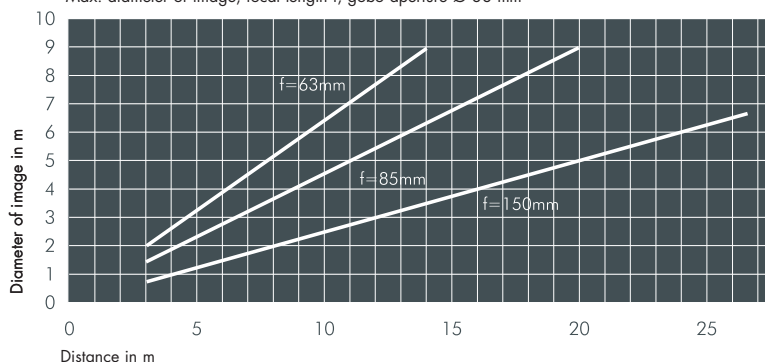
Part number	Description
129 0 257 000	Framer for sharp edges on 3 or 4-sided images



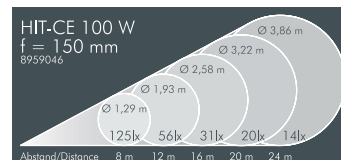
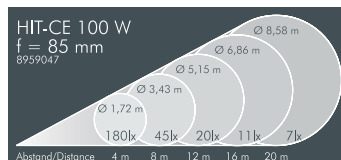
Part number	Example	Description
129 0 489 000	waves	Standard gobos Ø 50 mm
129 0 490 000	stars	
129 0 491 000	hash	

Custom made gobos can be produced from Image data in one of the following file formats: **EPS** (min. 300 dpi), **TIF** (min. 300 dpi), **JPG** (in low compression).
Max. image size D on gobo: D = 38 mm (outer diameter gobo 50 mm)

Max. diameter of image, focal length f, gobo aperture Ø 38 mm

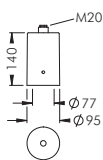


Lux level comparison HIT-CE 100 W / LED 47 W



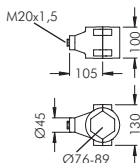
focal length 85 mm, distance 12 m:
HIT-CE 100 W:
20 lux average level
LED 47 W:
68 lux average level

focal length 150 mm, distance 16 m:
HIT-CE 100 W:
31 lux average level
LED 47 W:
74 lux average level

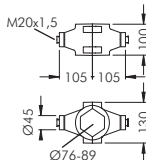


Accessories Nightspot B Gobo/RGBW Gobo

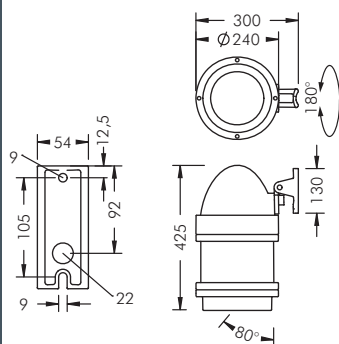
Part number	Colour	Description
128 0 626 940	black	Pole Top Fitter , aluminium, for 76 mm pole top, with M20 x 1.5 connection thread, for installation of one luminaire
128 0 626 960	white	
128 0 626 950	silver grey	



Part number	Colour	Description
119 0 035 940	black	Single pole mount adapter , aluminium, for poles Ø 76 – 89 mm
119 0 035 960	white	
119 0 035 950	silver grey	



Part number	Colour	Description
119 0 036 940	black	Double pole mount adapter , aluminium, for poles Ø 76 – 89 mm
119 0 036 960	white	
119 0 036 950	silver grey	



Nightspot B/RGBW Gobo pole luminaire

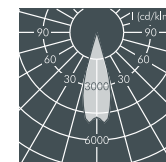
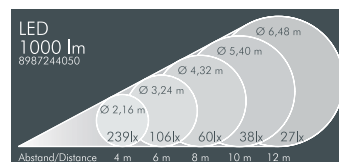
Monochrome: With high performance LED module, CRI: > 70, Colour tolerance: max. 4 SDCM Service life: L70/B20 > 50 000 h protection class I or II, IP67 , IK08 integral driver (AC/DC)

RGBW: With high performance LED module RGBW, protection class I, IP67 , IK08 external DMX-controller required, connection with hybrid cable 230 V/DMX, RDM compatible integral driver (AC/DC)

windage area AW 0.085 m², corrosion-resistant die cast aluminium housing AlSi12 and aluminium profile, polyester powder coated, focusable lense, carrier for gobos and colour filters, all exterior steel parts are stainless steel, tempered safety glass, silicon gasket, closure with 4 stainless steel screws, for pole diameter Ø 60–100 mm, rotatable, powder coated aluminium mounting base: 2 drilled holes Ø 9 mm, spacing 105 mm, 1 centre hole Ø 22 mm, tilt range 80°, swivel range 180°, M20 cable gland

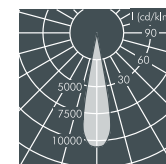
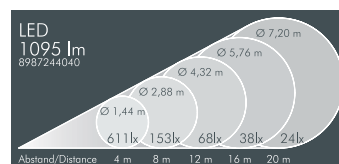
Nightspot B Gobo pole luminaire, 63 mm focal length

Part number	Colour	Weight	Light source	Luminous flux	Beam angle
8 987 244 059	black	7.8 kg	1 x LED module 47 W cool white (6500 K)	1000 lm	30°
8 987 264 059	white				
8 987 254 059	silver grey				



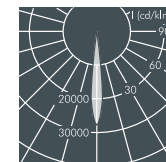
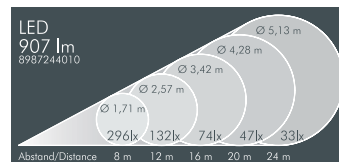
Nightspot B Gobo pole luminaire, 85 mm focal length

Part number	Colour	Weight	Light source	Luminous flux	Beam angle
8 987 244 049	black	7.8 kg	1 x LED module 47 W cool white (6500 K)	1095 lm	20°
8 987 264 049	white				
8 987 254 049	silver grey				



Nightspot B Gobo pole luminaire, 150 mm focal length

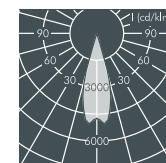
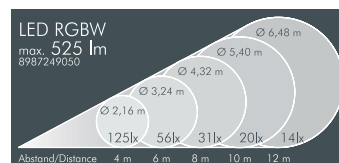
Part number	Colour	Weight	Light source	Luminous flux	Beam angle
8 987 244 019	black	7.9 kg	1 x LED module 47 W cool white (6500 K)	907 lm	12°
8 987 264 019	white				
8 987 254 019	silver grey				



Part number	Protection class I luminaire
..... 1..	Dimmable version (DALI)
..... 2..	Dimmable version (1-10 V)
..... 5..	Protection class II luminaire
..... 5..	Luminaire not dimmable
..... 6..	Dimmable version (DALI)
..... 7..	Dimmable version (1-10 V)

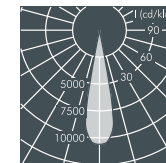
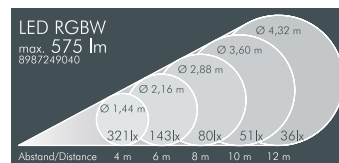
Nightspot B RGBW Gobo pole luminaire, 63 mm focal length

Part number	Colour	Light source	Luminous flux	Beam angle
8 987 249 059	black	1 x LED module RGBW W = 6000 K (max. 38 W)	max. 525 lm	30°
8 987 269 059	white			
8 987 259 059	silver grey			
Weight 7.8 kg				



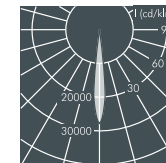
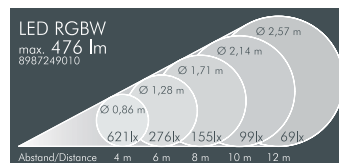
Nightspot B RGBW Gobo pole luminaire, 85 mm focal length

Part number	Colour	Light source	Luminous flux	Beam angle
8 987 249 049	black	1 x LED module RGBW W = 6000 K (max. 38 W)	max. 575 lm	20°
8 987 269 049	white			
8 987 259 049	silver grey			
Weight 7.8 kg				



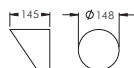
Nightspot B RGBW Gobo pole luminaire, 150 mm focal length

Part number	Colour	Light source	Luminous flux	Beam angle
8 987 249 019	black	1 x LED module RGBW W = 6000 K (max. 38 W)	max. 476 lm	12°
8 987 269 019	white			
8 987 259 019	silver grey			
Weight 7.9 kg				



LED (see page 247)





Accessories Nightspot

A2

Part number	Colour	Description
129 0 578 940	black	Cowl , stainless steel, to avoid lateral glare, for retro-fitting. Only one accessory per luminaire, not in combination.
129 0 578 960	white	
129 0 578 950	silver grey	

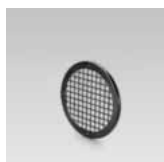
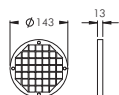
B

Part number	Colour	Description
129 0 320 940	black	Cowl , stainless steel, to avoid lateral glare, for retro-fitting. Only one accessory per luminaire, not in combination.
129 0 320 960	white	
129 0 320 950	silver grey	



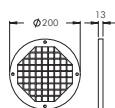
A2

Part number	Colour	Description
129 0 591 940	black	Protection grill , stainless steel, to protect the glass lens from breakage and vandalism, for retro-fitting
129 0 591 960	white	
129 0 591 950	silver grey	



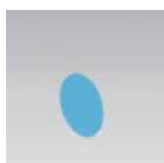
B

Part number	Colour	Description
129 0 340 940	black	Protection grill , stainless steel, to protect the glass lens from breakage and vandalism, for retro-fitting
129 0 340 960	white	
129 0 340 950	silver grey	



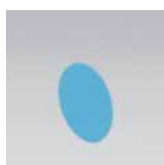
A2

Part number	Colour	Description
129 0 581 000	yellow	Dichroic colour filter , internally fitted
129 0 587 000	red	
129 0 583 000	blue	
129 0 588 000	green	



B*

Part number	Colour	Description
129 0 681 000	yellow	Dichroic colour filter , internally fitted *not suitable for luminaires 8 988 ...
129 0 687 000	red	
129 0 683 000	blue	
129 0 688 000	green	



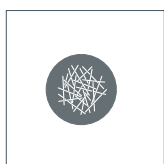
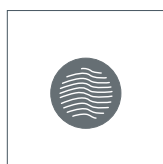
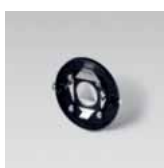
B Gobo

Part number	Colour	Description
129 0 551 000	yellow	Dichroic colour filter , internally fitted
129 0 557 000	red	
129 0 553 000	blue	
129 0 558 000	green	



B Gobo / B RGBW Gobo

Part number	Description
129 0 257 000	Framer for sharp edges on 3 or 4-sided images

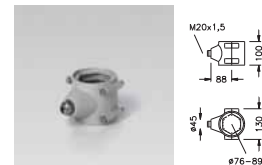


Part number	Part number	Part number	Description
129 0 489 000	129 0 490 000	129 0 491 000	Standardgobos Ø 50 mm
Example waves	Example stars	Example hash	

Custom made gobos can be produced from Image data in one of the following file formats: **EPS** (min. 300 dpi), **TIF** (min. 300 dpi), **JPG** (in low compression).
Max. image size D on gobo: D = 38 mm (outer diameter gobo 50 mm)

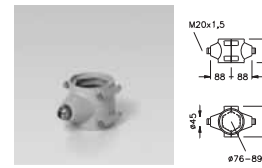
A2, B

Part number	Colour	Description
119 0 033 940	black	Single pole mount clamp, aluminium, for poles \varnothing 76 – 89 mm
119 0 033 960	white	
119 0 033 950	silver grey	



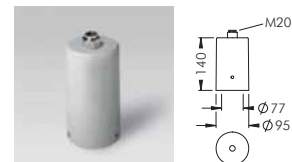
A2, B

Part number	Colour	Description
119 0 034 940	black	Double pole mount clamp, aluminium, for poles \varnothing 76 – 89 mm
119 0 034 960	white	
119 0 034 950	silver grey	



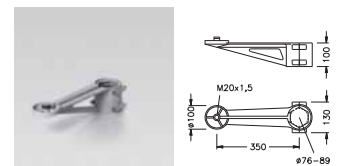
A2, B, B Gobo

Part number	Colour	Description
128 0 626 940	black	Pole Top Fitter, aluminium, for 76 mm pole top, with M20 x 1.5 connection thread, for installation of one luminaire
128 0 626 960	white	
128 0 626 950	silver grey	



A2, B, B Gobo

Part number	Colour	Description
119 0 031 940	black	Single pole mount arm, aluminium, for poles \varnothing 76 – 89 mm
119 0 031 960	white	
119 0 031 950	silver grey	



A2, B, B Gobo

Part number	Colour	Description
119 0 032 940	black	Double pole mount arm, aluminium, for poles \varnothing 76 – 89 mm
119 0 032 960	white	
119 0 032 950	silver grey	

