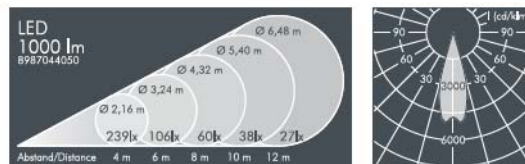


Nightspot B LED Gobo Projector

With high performance LED-Modul protection class I, IP65 \diamond \triangle \triangle , IK08 windage area AWW 0.085 m² die cast aluminium housing, polyester powder coated, focusable lens, carrier for gobos and colour filters, all exterior steel parts are stainless steel, tempered safety glass, silicon gasket, closure with 4 stainless steel screws, mounting bracket powder coated aluminium with tilt scale: 2 drilled holes \varnothing 9 mm, spacing 70 mm, 1 centre hole \varnothing 22 mm, tilt range 115°, M20 cable gland, integral driver (AC/DC)

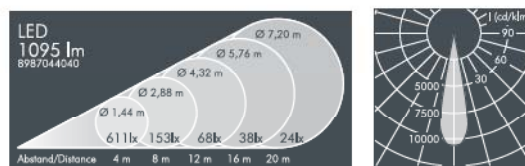
Nightspot B LED Gobo Projector, 63 mm focal length

Part number	Colour	Light source	Weight	Beam angle
8 987 044 059	black	1 x LED module 47 W	8.0 kg	30°
8 987 064 059	white	cold white (6500 K)		
8 987 054 059	silver grey			



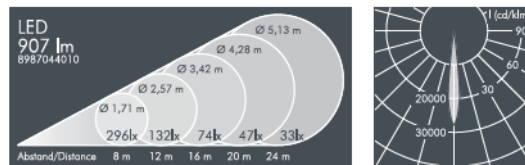
Nightspot B LED Gobo Projector, 85 mm focal length

Part number	Colour	Light source	Weight	Beam angle
8 987 044 049	black	1 x LED module 47 W	8.0 kg	20°
8 987 064 049	white	cold white (6500 K)		
8 987 054 049	silver grey			

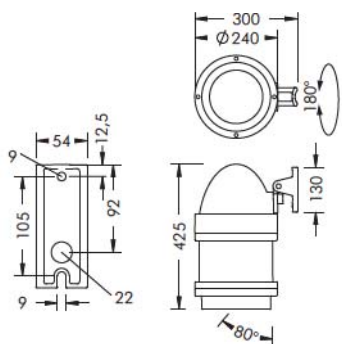


Nightspot B LED Gobo Projector, 150 mm focal length

Part number	Colour	Light source	Weight	Beam angle
8 987 044 019	black	1 x LED module 47 W	8.1 kg	12°
8 987 064 019	white	cold white (6500 K)		
8 987 054 019	silver grey			



Part number	Description
... 1..	Dimmable version (DALI)



Nightspot B LED Gobo Projector pole luminaire

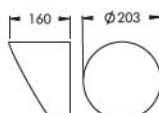
With high performance LED-Modul protection class I, IP65 \diamond \triangle \triangle , IK08 windage area AWW 0.085 m² die cast aluminium housing, polyester powder coated, focusable lens, carrier for gobos and colour filters, all exterior steel parts are stainless steel, tempered safety glass, silicon gasket, closure with 4 stainless steel screws, for pole diameter \varnothing 60–100 mm, rotatable, powder coated aluminium mounting base: 2 drilled holes \varnothing 9 mm, spacing 105 mm, 1 centre hole \varnothing 22 mm, tilt range 80°, swivel range 180°, M20 cable gland, integral driver (AC/DC)

Part number	Description
... 2..	Gobo Projector for pole mounting

LED

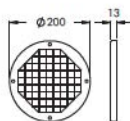
LEDs, replacement modules available



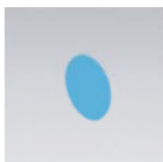


Accessories Nightspot B LED

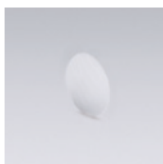
Part number	Colour	Description
129 0 320 940	black	Cowl,
129 0 320 960	white	stainless steel,
129 0 320 950	silver grey	to avoid lateral glare



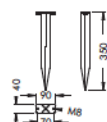
Part number	Colour	Description
129 0 340 940	black	Protection grill,
129 0 340 960	white	stainless steel,
129 0 340 950	silver grey	to protect the glass lens from breakage and vandalism, for retrofitting



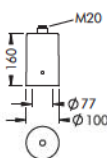
Part number	Colour	Description
129 0 631 000	yellow	Colour filter,
129 0 637 000	red	internally fitted
129 0 633 000	blue	
129 0 638 000	green	



Accessories Nightspot B LED, narrow beam		Half beam angle γ	
Part number	Description	C 0-180	C 90-270
129 0 627 000	Ribbed glass, internally fitted, for linear beam control, continuously adjustable 360°	15°	34°



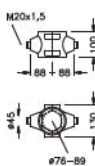
Accessories Nightspot B LED, with mounting bracket		
Part number	Colour	Description
129 0 390 940	black	Stainless steel earth spike,
129 0 390 960	white	for use in landscape lighting
129 0 390 950	silver grey	



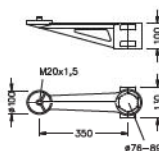
Part number	Colour	Description
128 0 626 940	black	Pole Top Fitter, aluminium,
128 0 626 960	white	for 76 mm pole top, with M20 x 1.5 connection thread,
128 0 626 950	silver grey	for installation of one luminaire



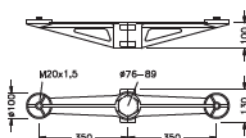
Part number	Colour	Description
119 0 033 940	black	Single pole mount clamp,
119 0 033 960	white	aluminium,
119 0 033 950	silver grey	for poles \varnothing 76 – 89 mm



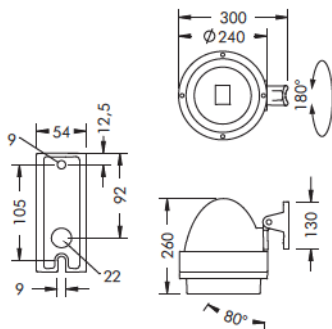
Part number	Colour	Description
119 0 034 940	black	Double pole mount clamp,
119 0 034 960	white	aluminium,
119 0 034 950	silver grey	for poles \varnothing 76 – 89 mm



Part number	Colour	Description
119 0 031 940	black	Single pole mount arm,
119 0 031 960	white	aluminium,
119 0 031 950	silver grey	for poles \varnothing 76 – 89 mm



Part number	Colour	Description
119 0 032 940	black	Double pole mount arm,
119 0 032 960	white	aluminium,
119 0 032 950	silver grey	for poles \varnothing 76 – 89 mm



Nightspot B LED, pole luminaire Street Optic

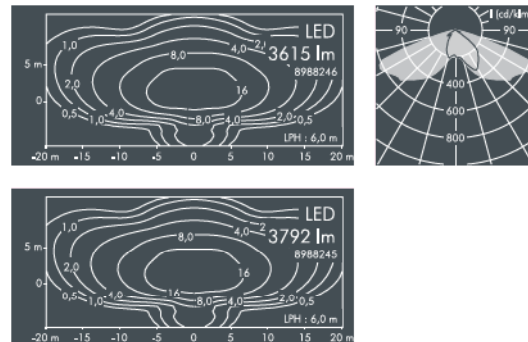
With a high performance LED module, integral temperature monitoring device protection class I, IP65 \blacklozenge \blacktriangle \blacktriangle , IK08 windage area AW 0.05 m² die cast aluminium housing, polyester powder coated, lens made of high efficiency optical silicon, all exterior steel parts are stainless steel, tempered safety glass, silicon gasket, closure with 4 stainless steel screws, for pole diameter Ø 60–100 mm, rotatable, powder coated aluminium mounting base: 2 drilled holes Ø 9 mm, spacing 105 mm, 1 centre hole Ø 22 mm, tilt range 80°, swivel range 180°, M20 cable gland, integral driver

Nightspot B LED, pole luminaire, Street Optic

Part number	Colour	Light source	Weight	Half beam angle γ	
8 988 246 009	black	1 x LED module 41 W	5.6 kg	C 0 – 180	C 90 – 270
8 988 266 009	white	warm white (3000 K)		63°	28°
8 988 256 009	silver grey				

Part number	Colour	Light source	Weight	Half beam angle γ	
8 988 245 009	black	1 x LED module 41 W	5.6 kg	C 0 – 180	C 90 – 270
8 988 265 009	white	neutral white (4000 K)		63°	28°
8 988 255 009	silver grey				

Part number	Description
. 1 . .	Dimmable version (DALI)



Illumination examples (according to DIN EN 13201-2)

	Lighting situation			
	S P 2	S P 3	S P 4	S P 5
LPH	6 m	6 m	6 m	6 m
D	30 m	36 m	40 m	42 m
D/H	5	6	6.7	7
Em	10.1 lx	8.4 lx	7.6 lx	7.2 lx
E_{min}	4.4 lx	1.5 lx	1.0 lx	0.7 lx
E_{min}/E_m	0.43	0.22	0.13	0.1
TI*	15%	17%	19%	20%

* TI: Threshold Increment (unit for measuring glare).
A low TI value indicates a low glare factor.

LED

LEDs, replacement modules available

